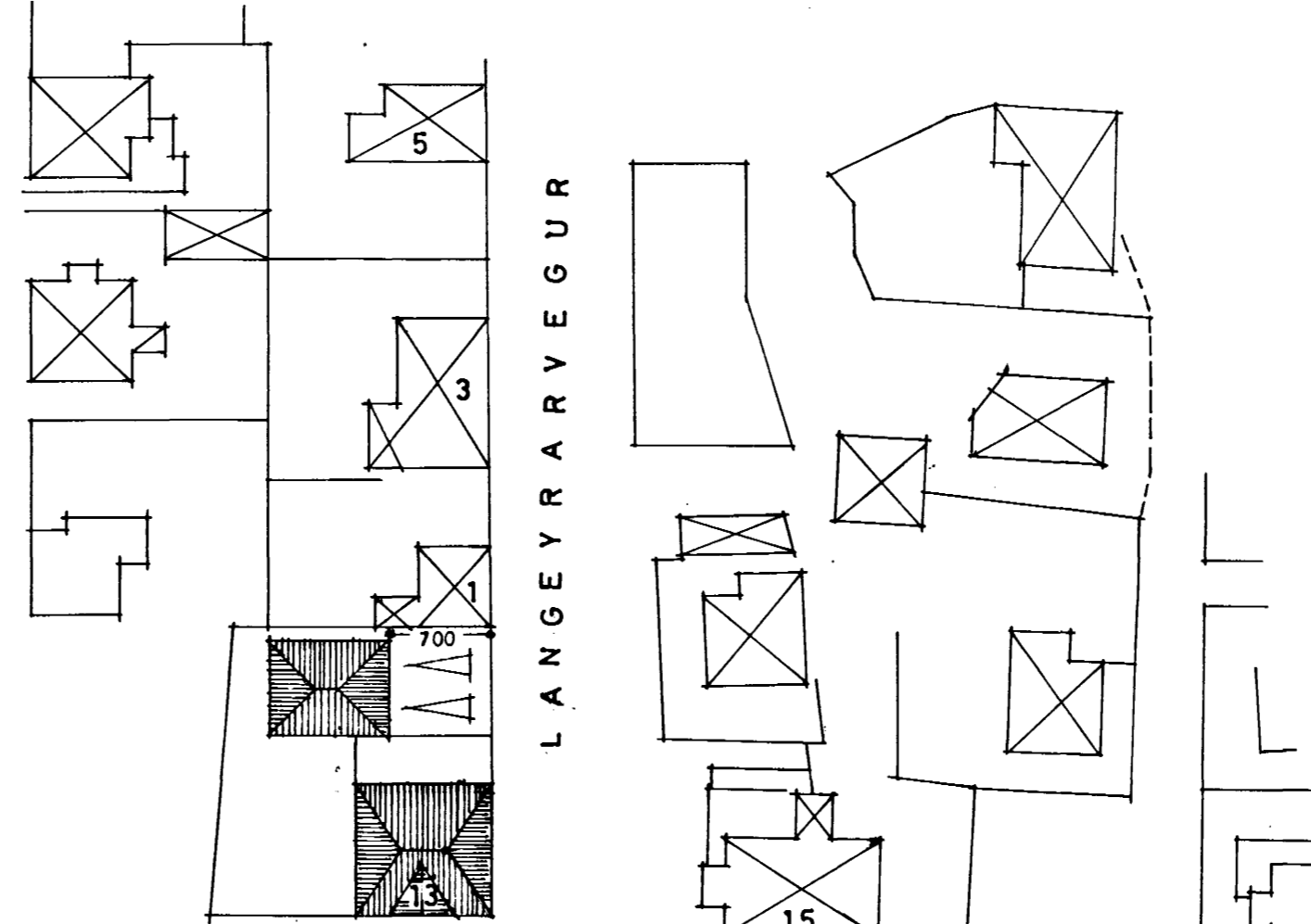
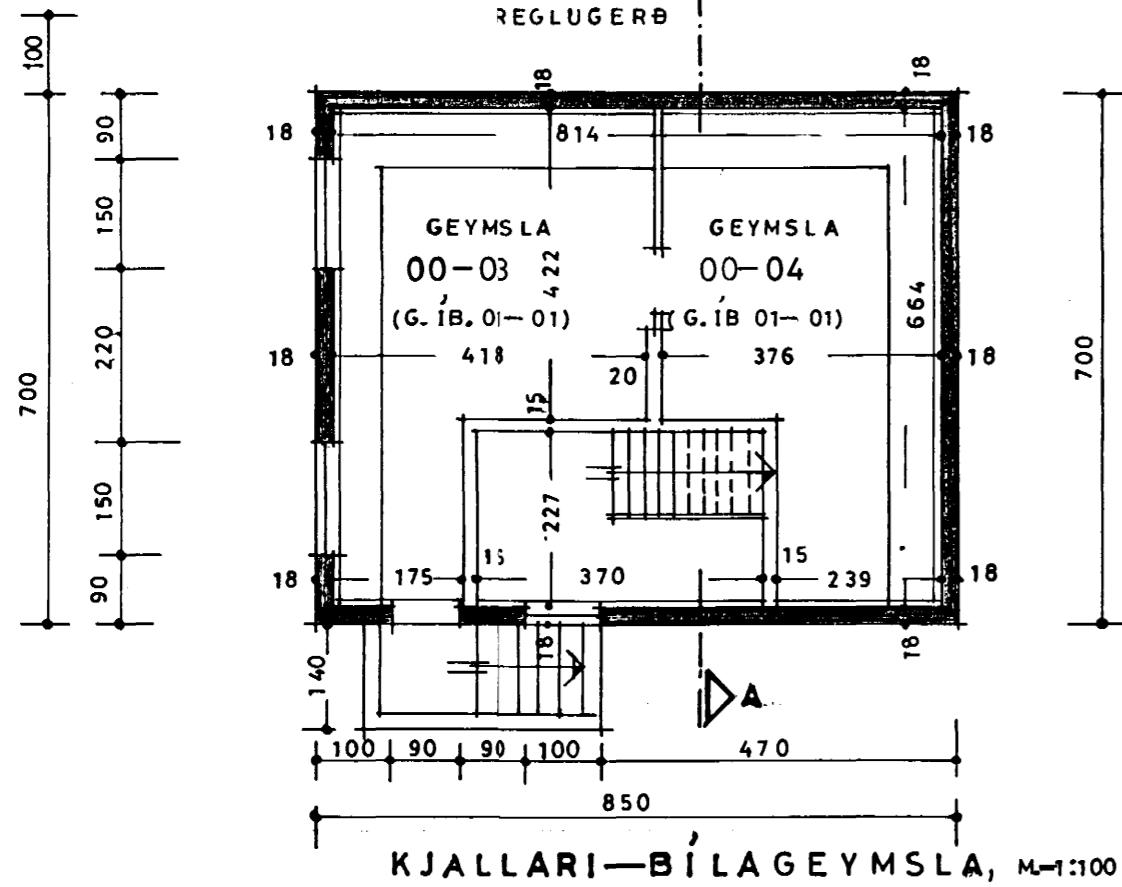


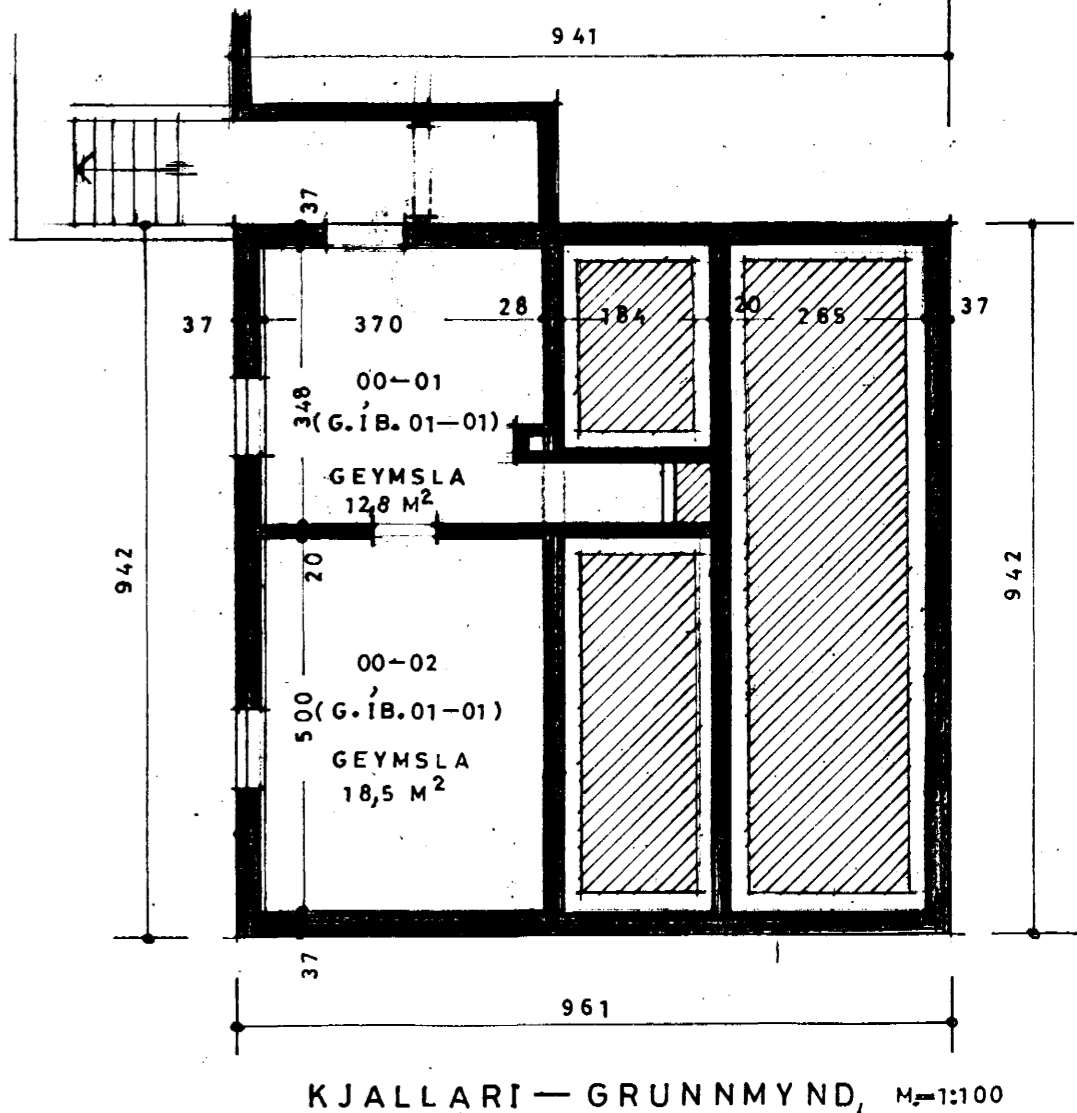
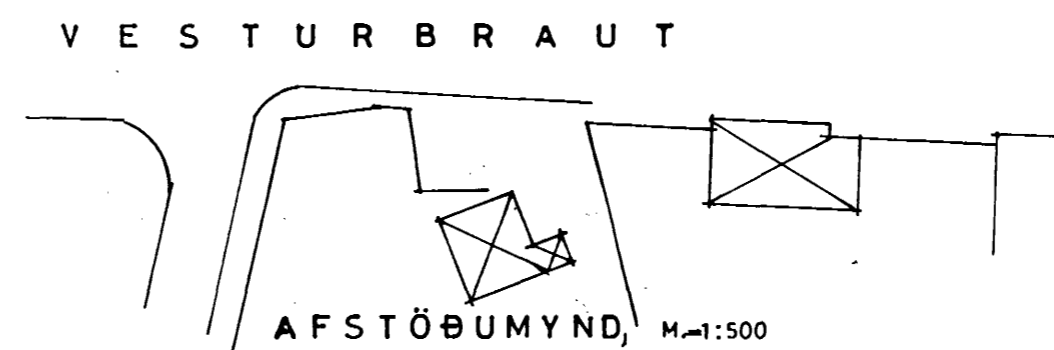
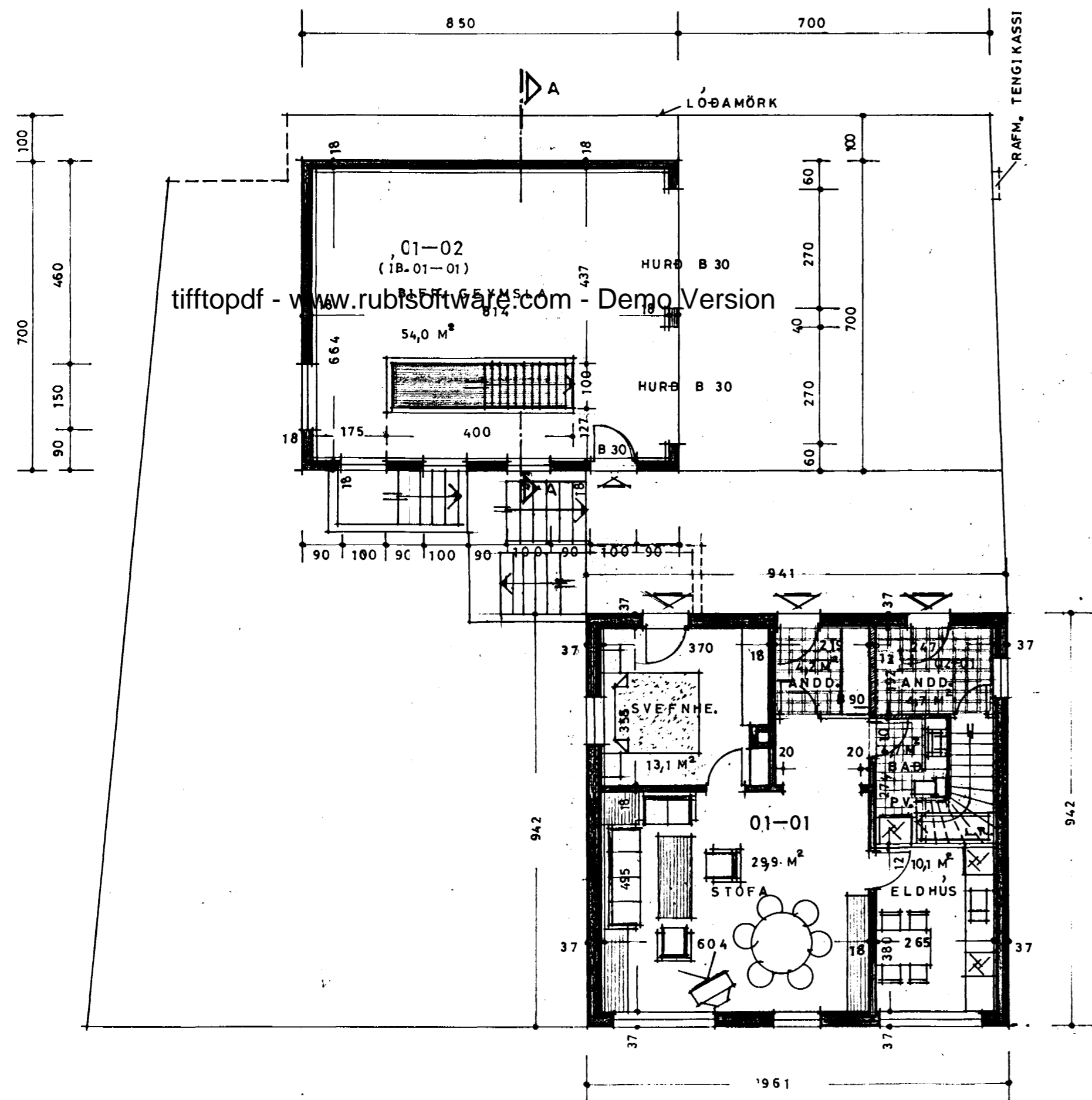
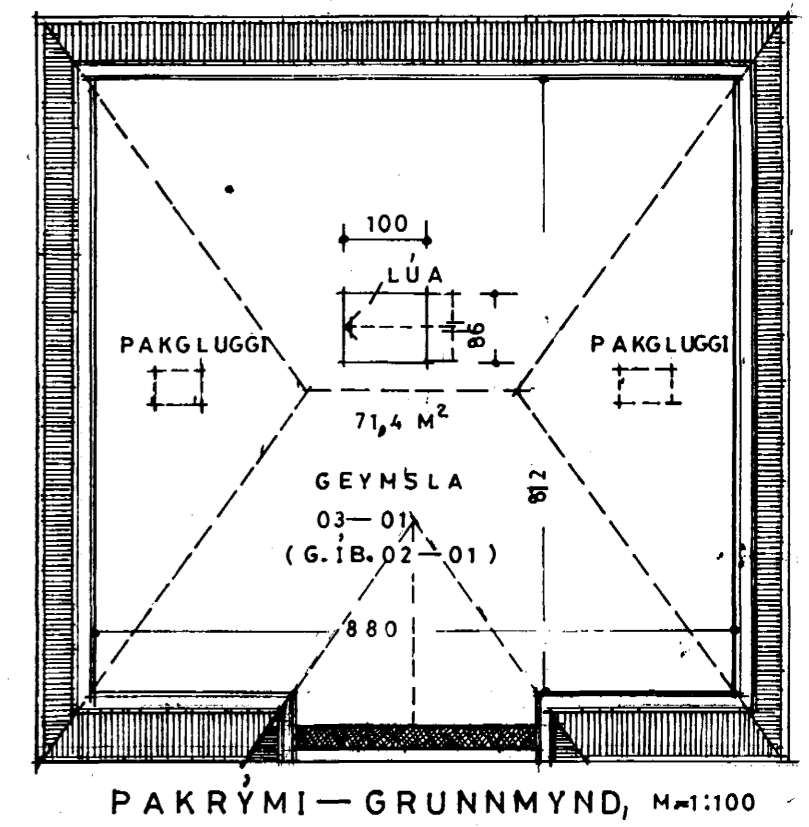
MEKANISK LOFTRÍ GRIFJU,
UT OG INNSOG SAMKV. BRUNAM,
REGLUGERÐ



Samþykkt að heimila
brettinguna á fundi þann
04 OKT. 1995
Aritaðir uppdrættir með
samþykki bygginganefndar
verða afhentir að verki loknu.

Samþykkt þann
15 SEPT. 1997
Byggingafulltrúinn í Hafnarfirði
Erlendur Hjálmarsson

BLAÐ 1



STÆRÐ HÚSS:

BÍLAG. KJALLARI	— 59,5 M ²	OG 127,8 M ³
BÍLAG. EFRA GOLF	— 59,5	— 194,0
KJALLARI ÍBÚÐARHÚSS	41,7	106,0
1. HÆÐAR ÍBÚÐ	— 78,8	— 236,4
2. HÆÐAR ÍBÚÐ	— 100,2	— 282,7
PAKRÝMI	— 89,5	— 80,6
SAMTALS	429,2 M ²	OG 1027,5 M ³

VESTURBRAUT 13, HAFNAFIRÐI.
R.VÍK Í SEPT. 1995.

Njáll Guðmundsson