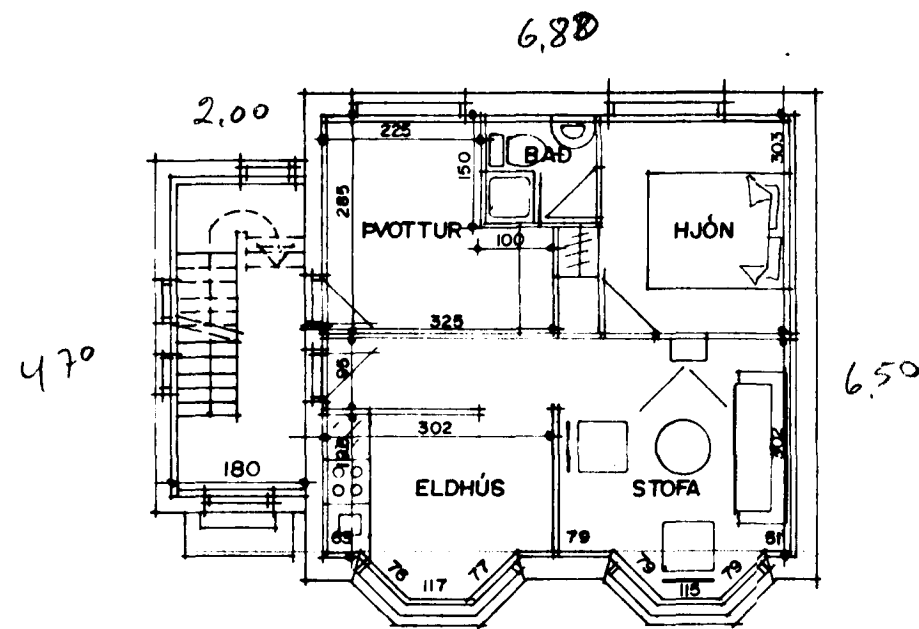


Samþykkt á fundi bygginga-  
nefndar þ. 24/11 1993.

BYGGINGAFULLTRÚINN  
Í HAFNARFIRÐI

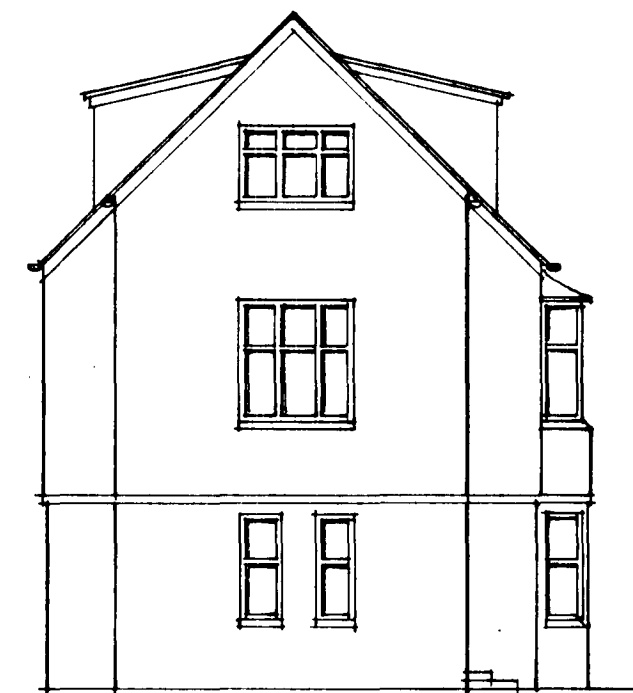
*Sigurðis Halld.*



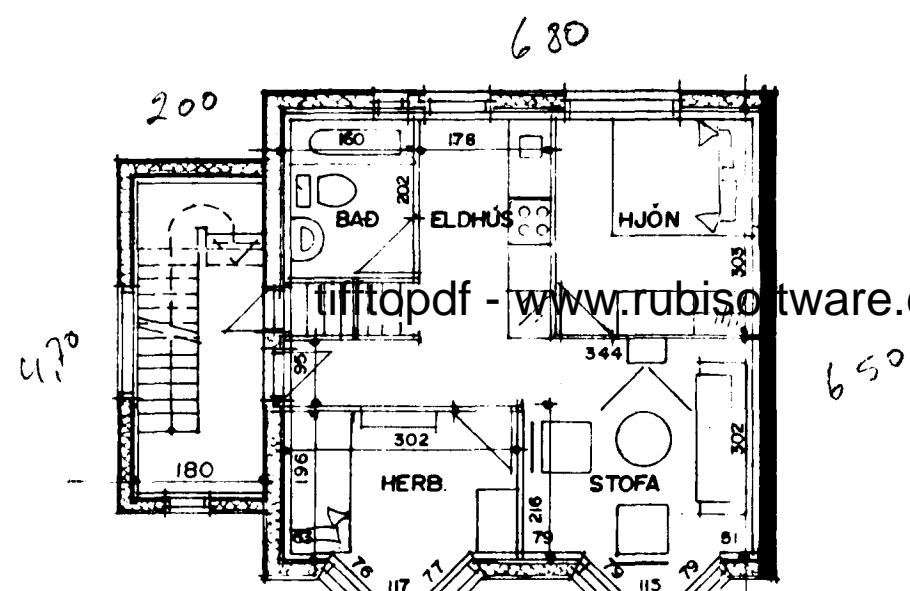
GRUNNMYND JARÐHÆÐAR M.1:100  
53.6m<sup>2</sup>



NORÐVESTUR M.1:100



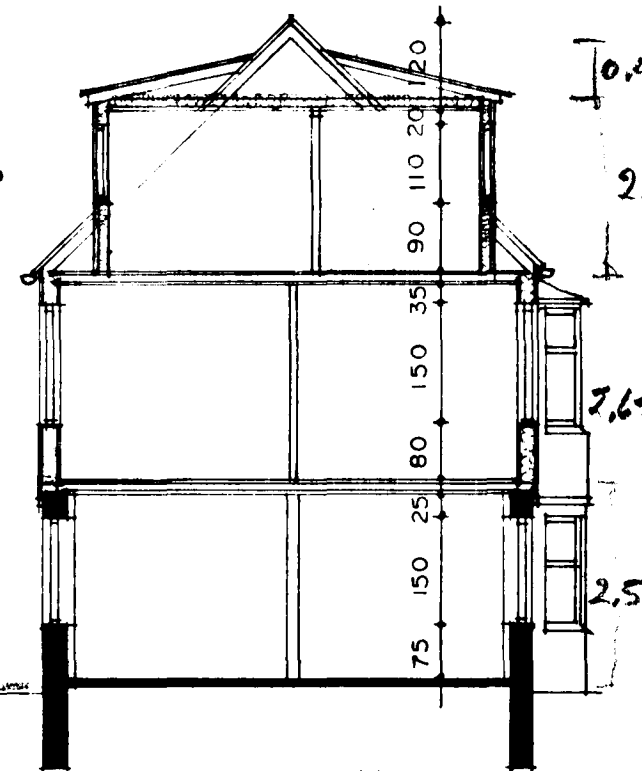
NORÐAUSTUR M.1:100



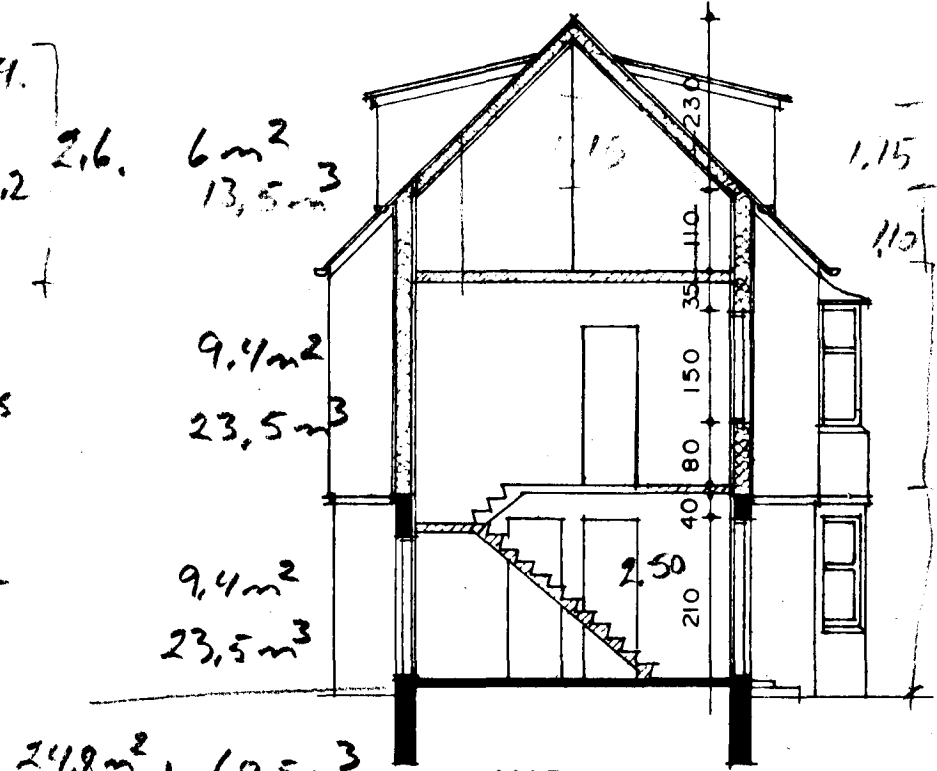
GRUNNMYND I. HÆÐAR M.1:100  
53.6m<sup>2</sup>



SUÐAUSTUR M.1:100

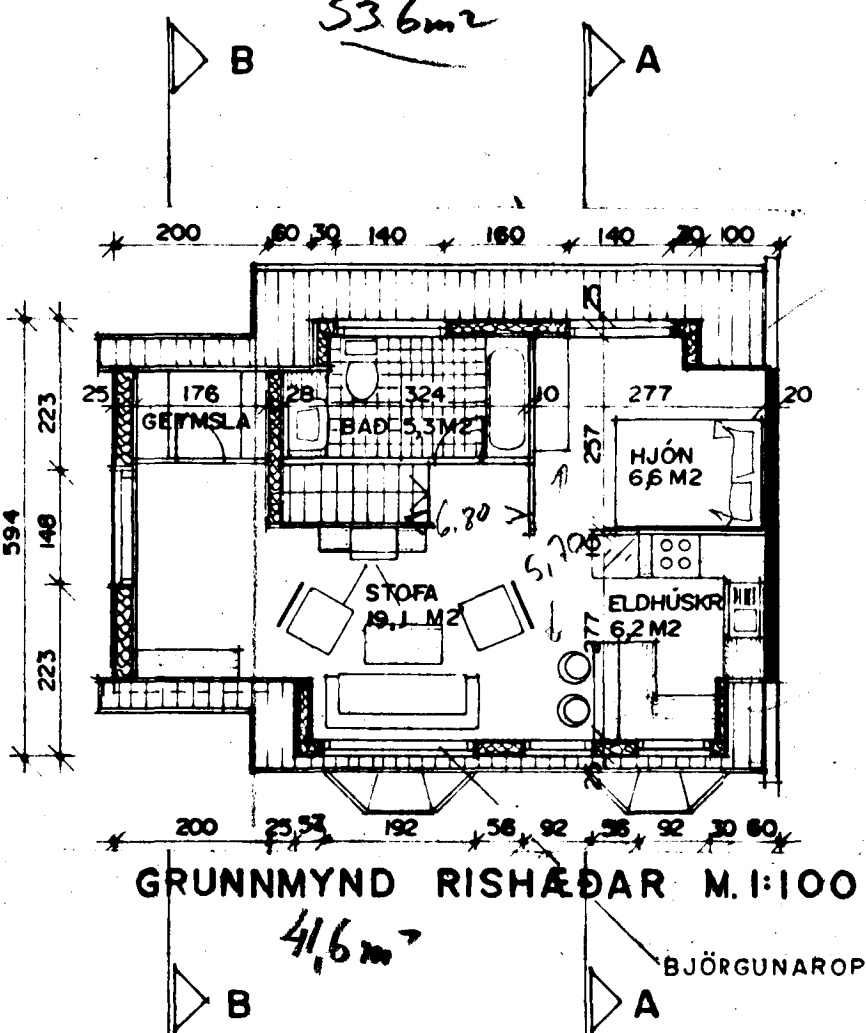


SNIÐ A-A M.1:100



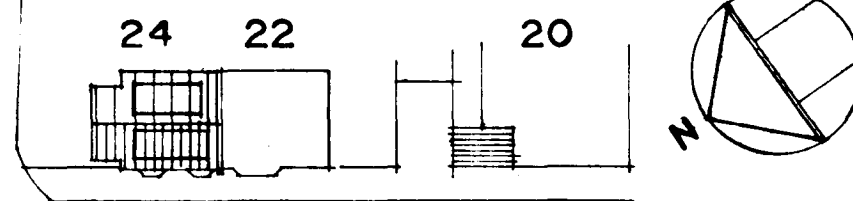
SNIÐ B-B M.1:100

124m<sup>2</sup>, 320m<sup>3</sup>  
25m<sup>2</sup>, 60m<sup>3</sup>  
149m<sup>2</sup>, 380m<sup>3</sup>  
381m<sup>3</sup>



GRUNNMYND RISHÆÐAR M.1:100  
41.6m<sup>2</sup>

HELLISGATA



VESTURBRAUT



AFSTÖÐUMYND M.1:500

SKÝRINGAR: RISHÆÐ SKAL EINANGRAST Í SAMRÆMI VIÐ GILDANDI REGLUGERÐIR OG ALLUR FRÁGANGUR MIÐST VIÐ HEFÐBUNDINN HÁTT, ÞAK OG VEGGIR HEILKLETT MEÐ 1'x6', ÞAKPAPPA OG GARÐASTÁLI

STÆRÐIR: FLATARMÁL RISHÆÐAR 44,2 M<sup>2</sup>  
RÚMMÁL RISHÆÐAR 112,2 M<sup>3</sup>

274m<sup>3</sup>  
112m<sup>3</sup>  
386m<sup>3</sup>

135.4m<sup>2</sup>  
44.2m<sup>2</sup>  
179.6m<sup>2</sup>

88.4  
47.0  
135.4

BREITT Í OKTOBER 1993 - HERBERGJASKIPAN FÆRD INN Á GRUNNMYND JARÐHÆÐAR OG I. HÆÐAR.

*Sigurður Þorvarðarson*