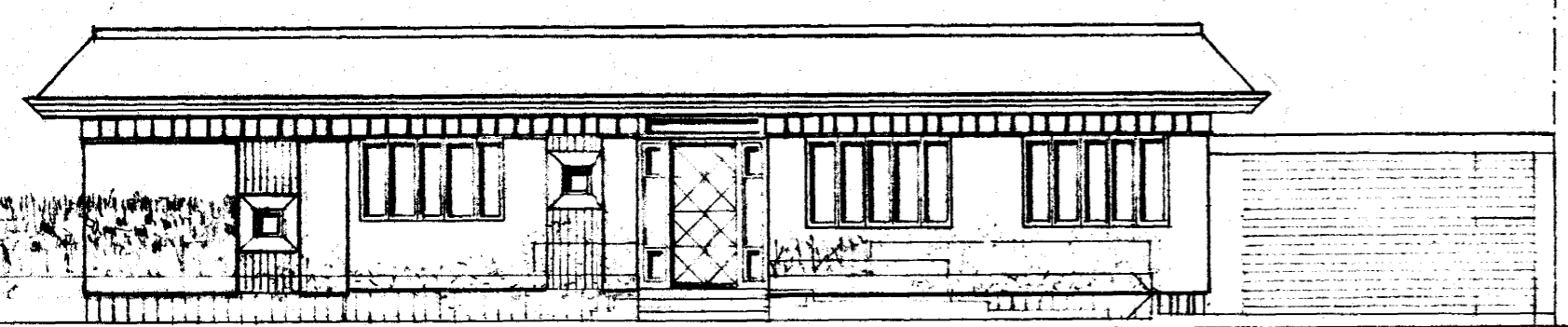


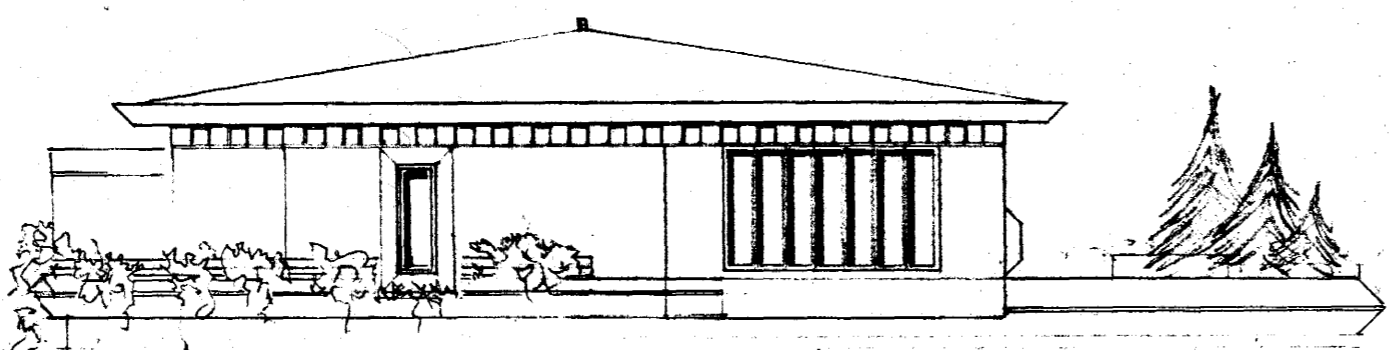
Samþykkt á fundi bygginga-
nefndar þ. 9.10.1974
BYGGINGAFULLTRÚIN
Í HAFNARFIRÐI
F. Gyvitzson

Semirama þarf gólfkote
byggingar stúlmilum
22,20 ± 0,15

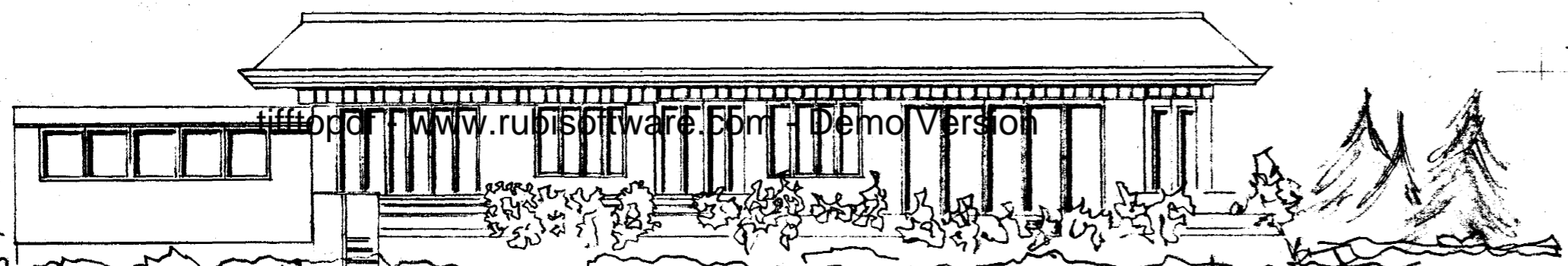
Verð hásið hlíð upp til bráð-birða,
með olíuvinnum um 100 á annan hátt,
skal hafi fall samræði við byggingulína
og slökkið kostgjöra um frágang slíks
úthúnaðar.



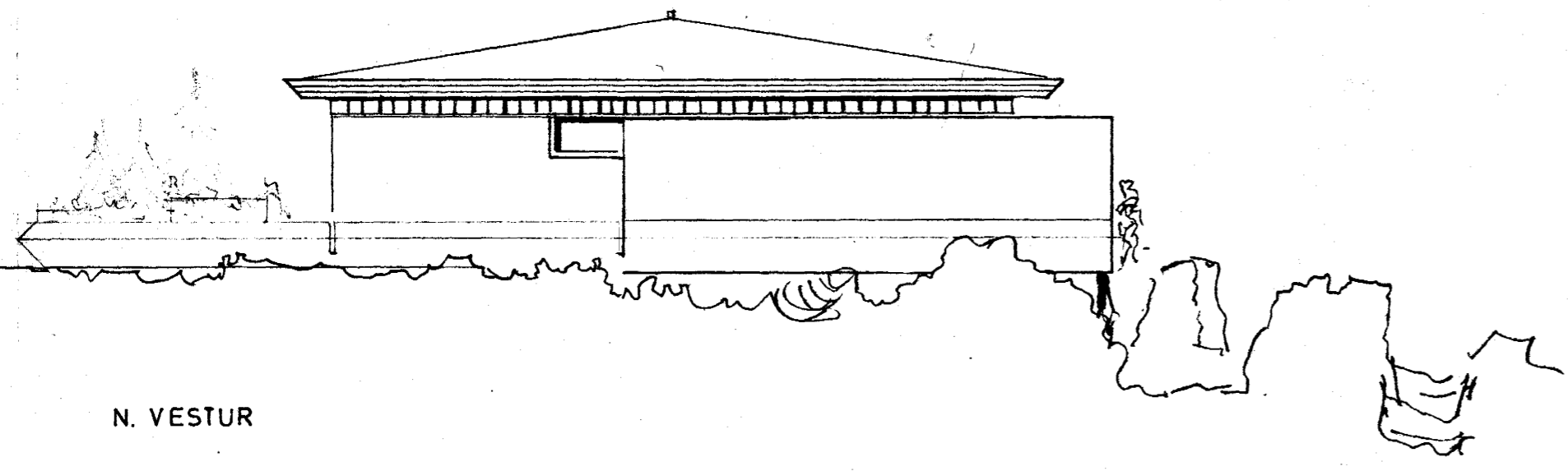
N. AUSTUR



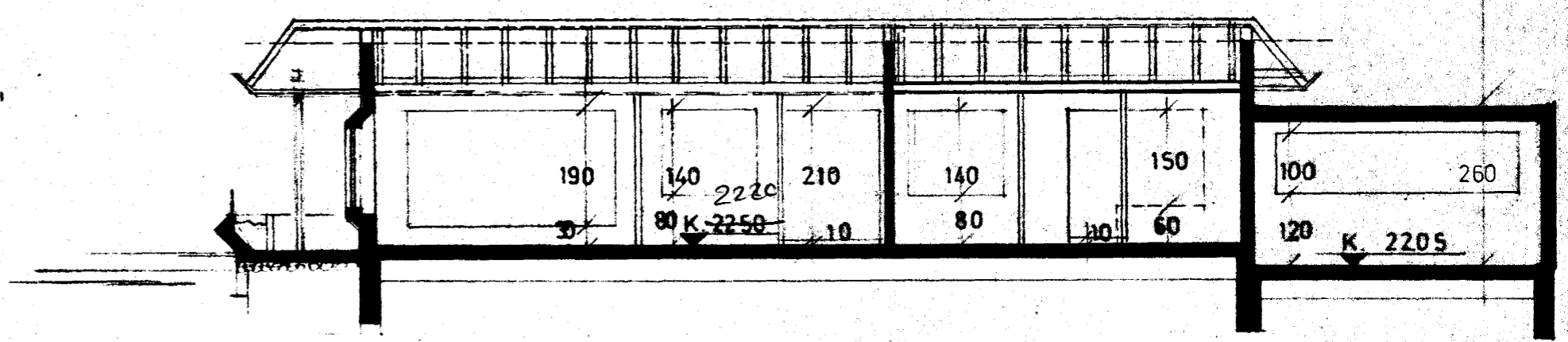
S. AUSTUR



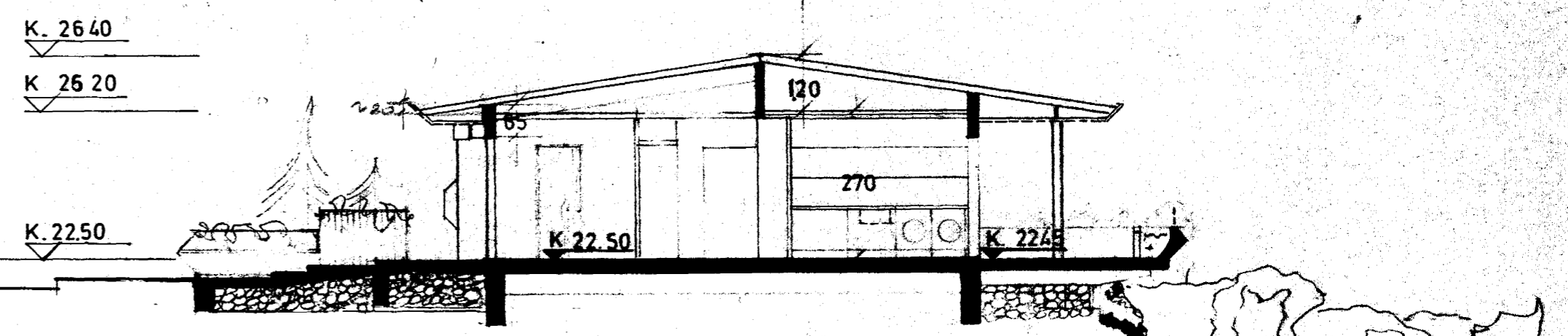
S. VESTUR



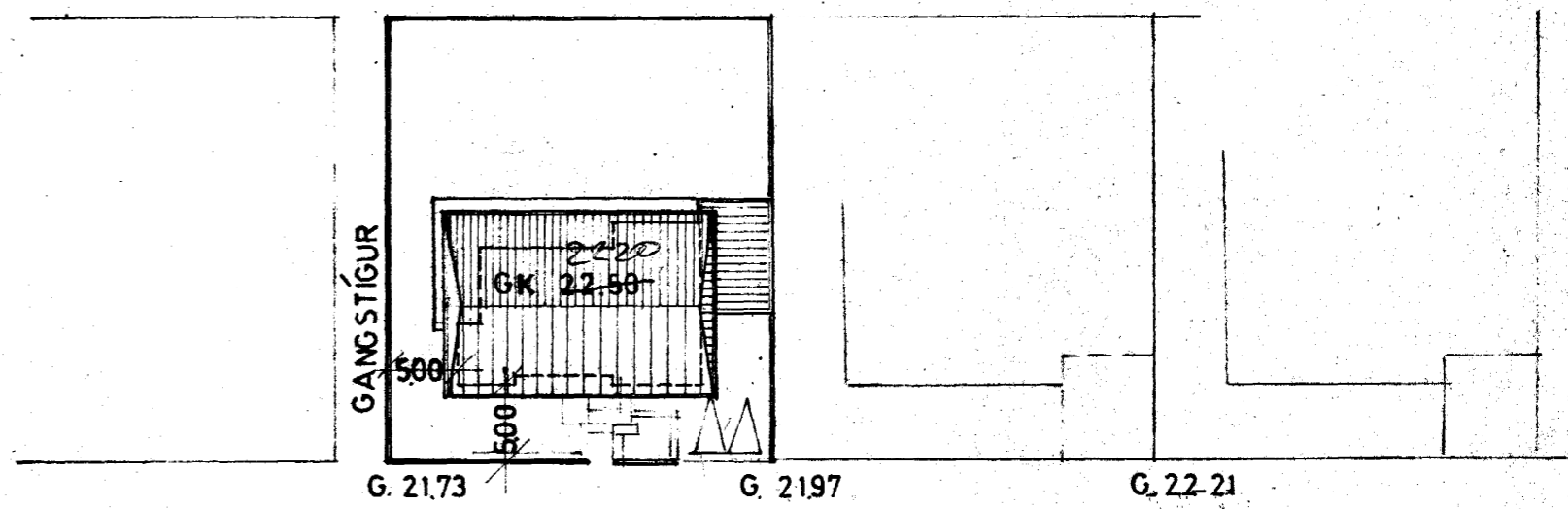
N. VESTUR



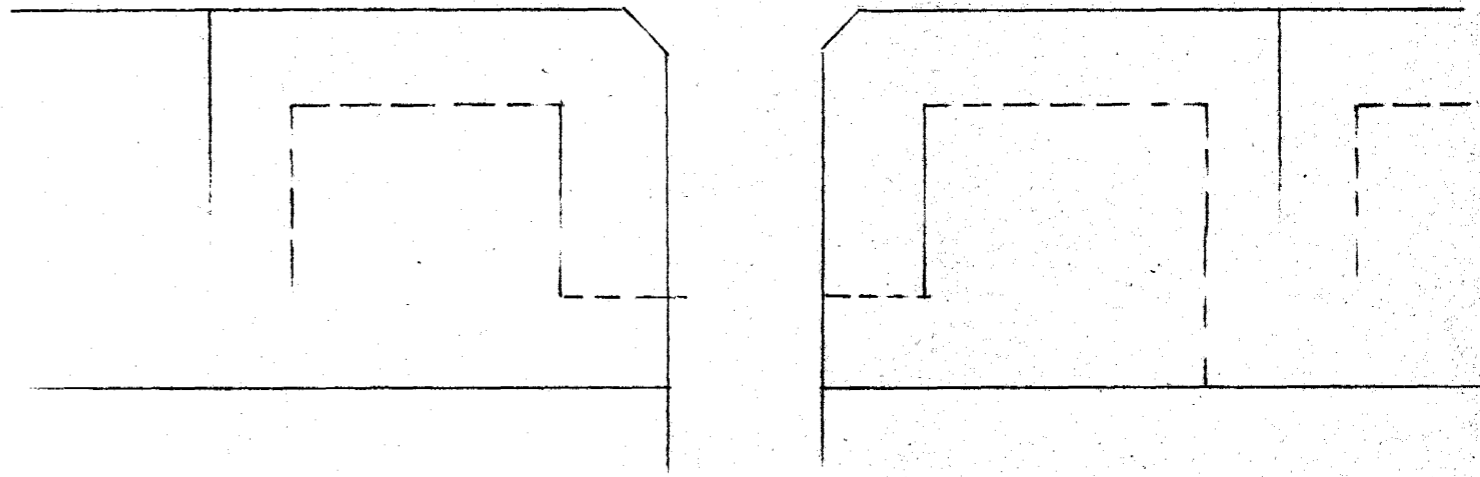
SNID A-A



SNID BB



VESTURVANGUR 41. M.:1:500



100% Gyvitzson