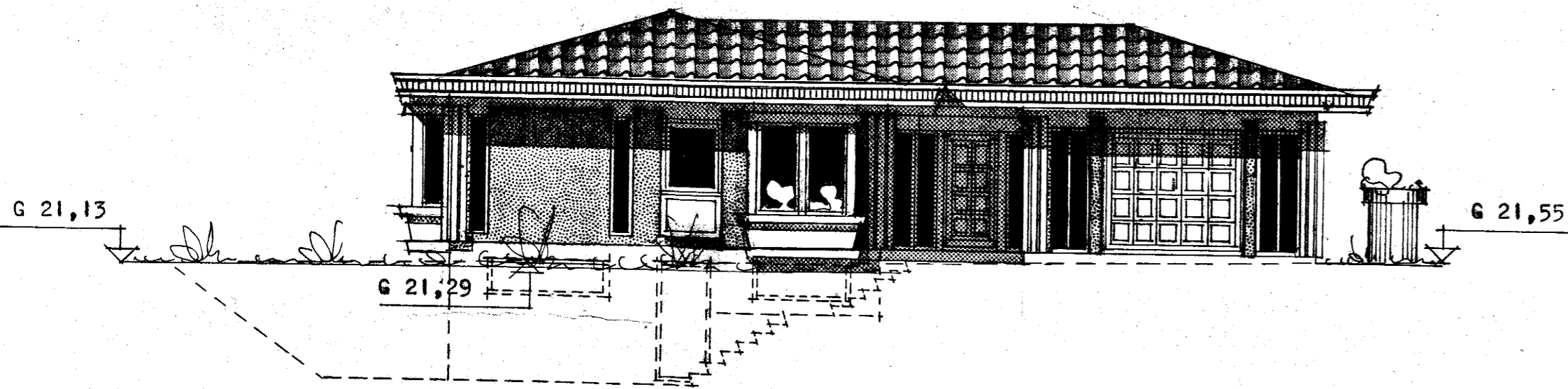


9400-0110-01

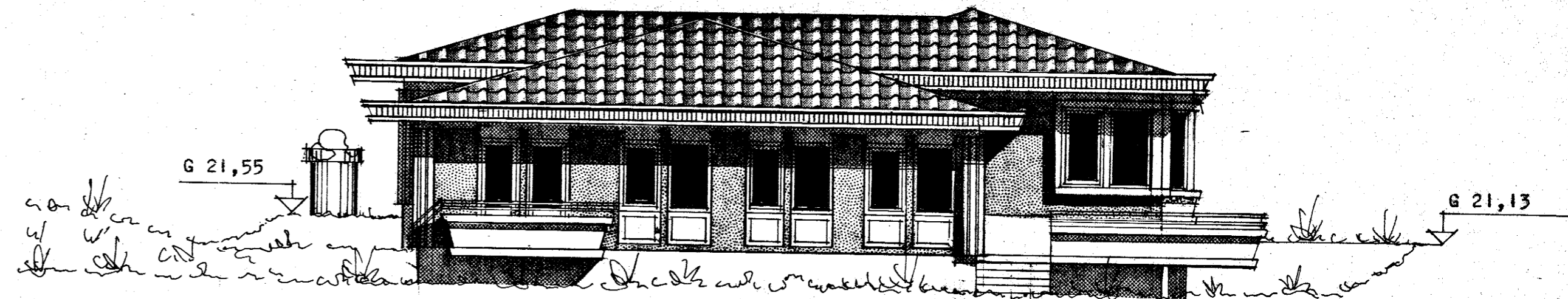
Samþykkt á fundi bygginga-
nefndar þ. 14.9.1983
BYGGINGAFULLTRÚINN
Í HAFNARFIRÐI

[Signature]

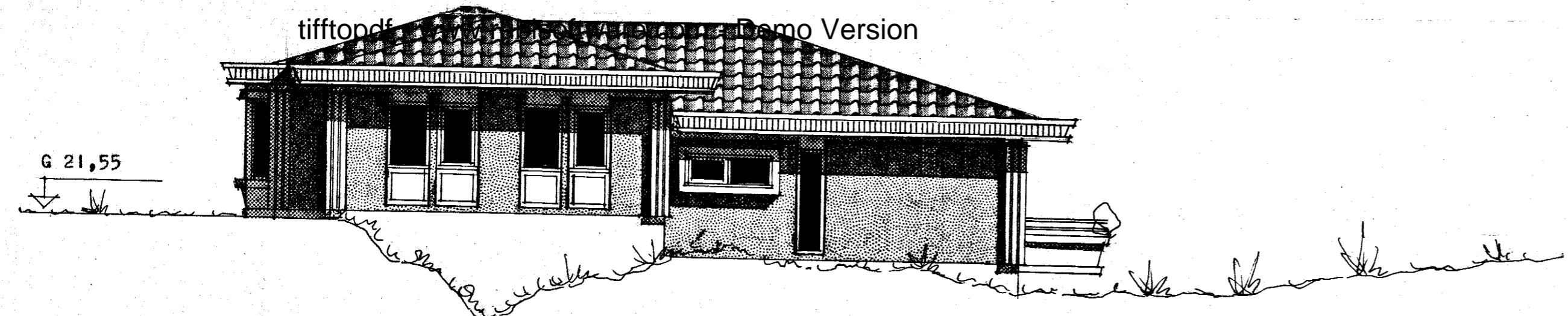
*Gedur er fjórðungi um
þræmmali úr bærlaus
F 615*



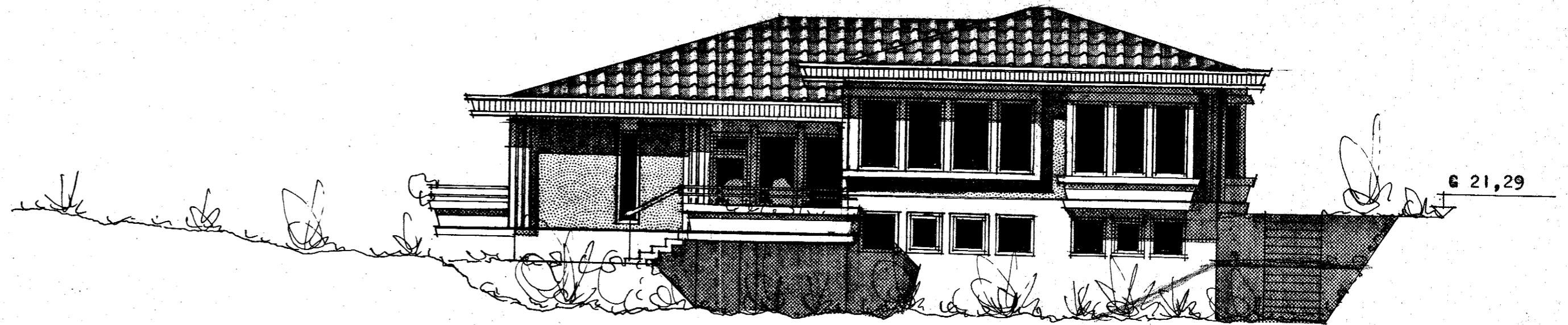
SUÐ - AUSTUR



NORÐ - VESTUR



NORÐ - AUSTUR



SUÐ - VESTUR

REYKJAVÍK í ágúst 1983
J. Hartmann Sveinsson