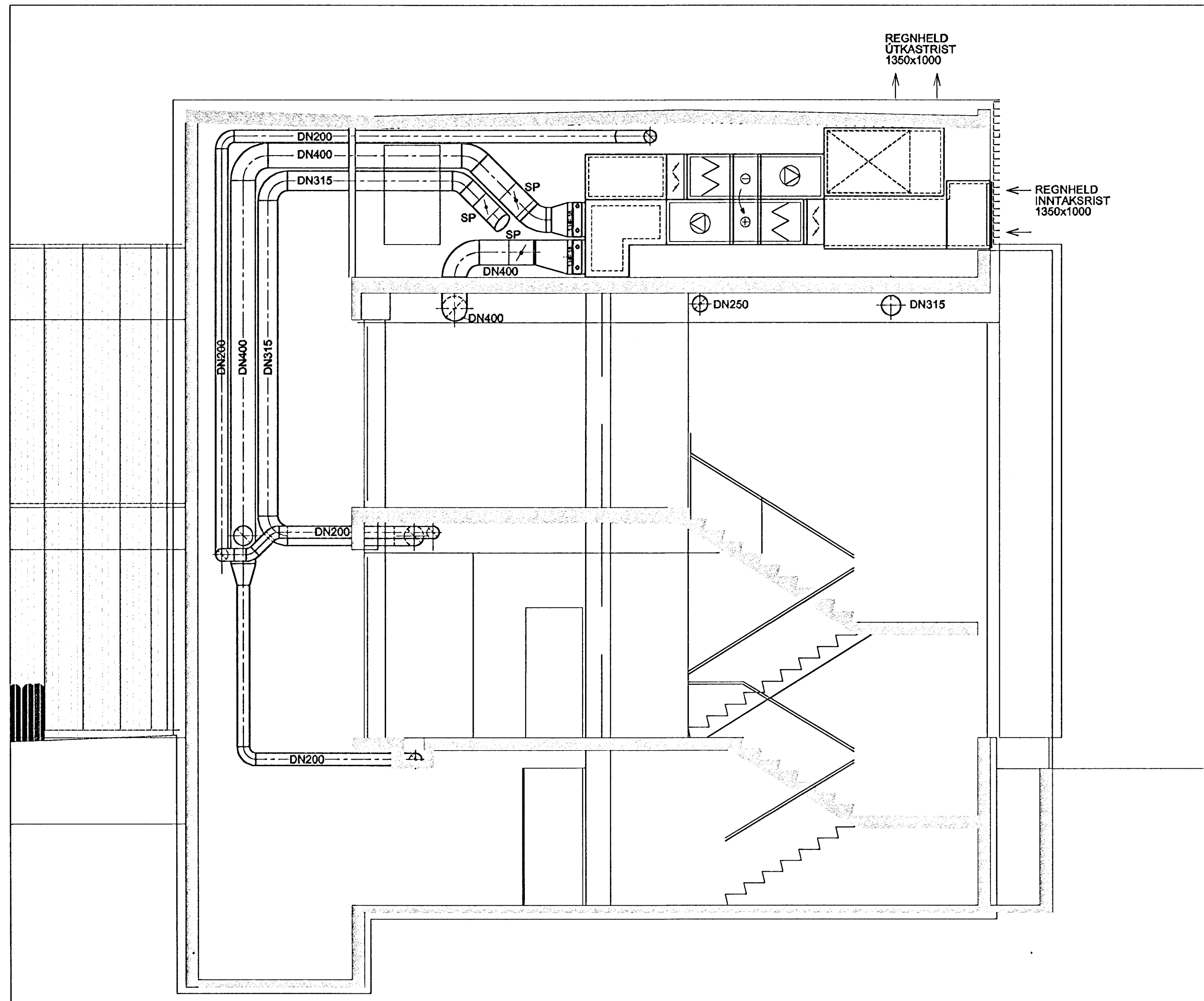
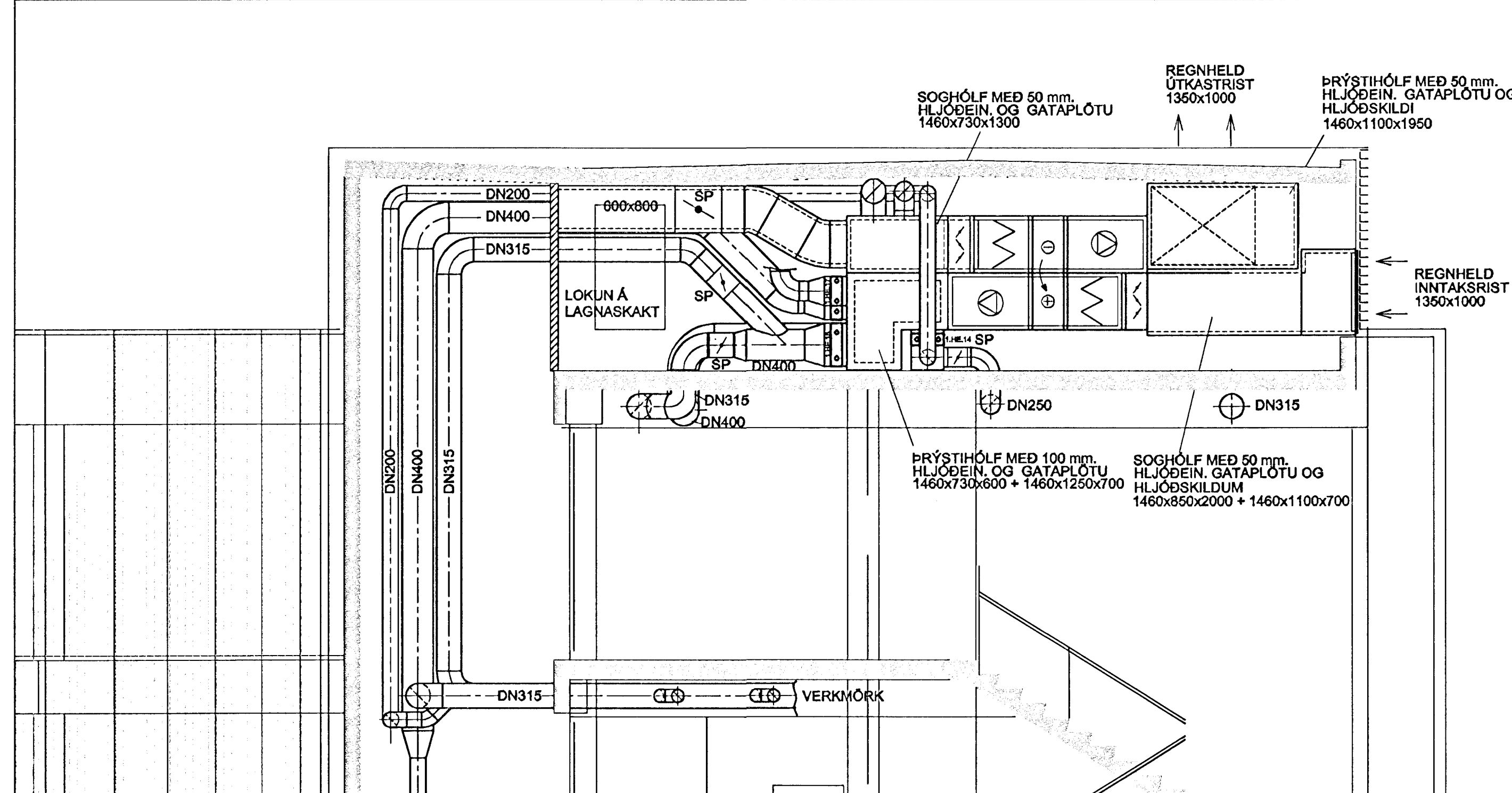


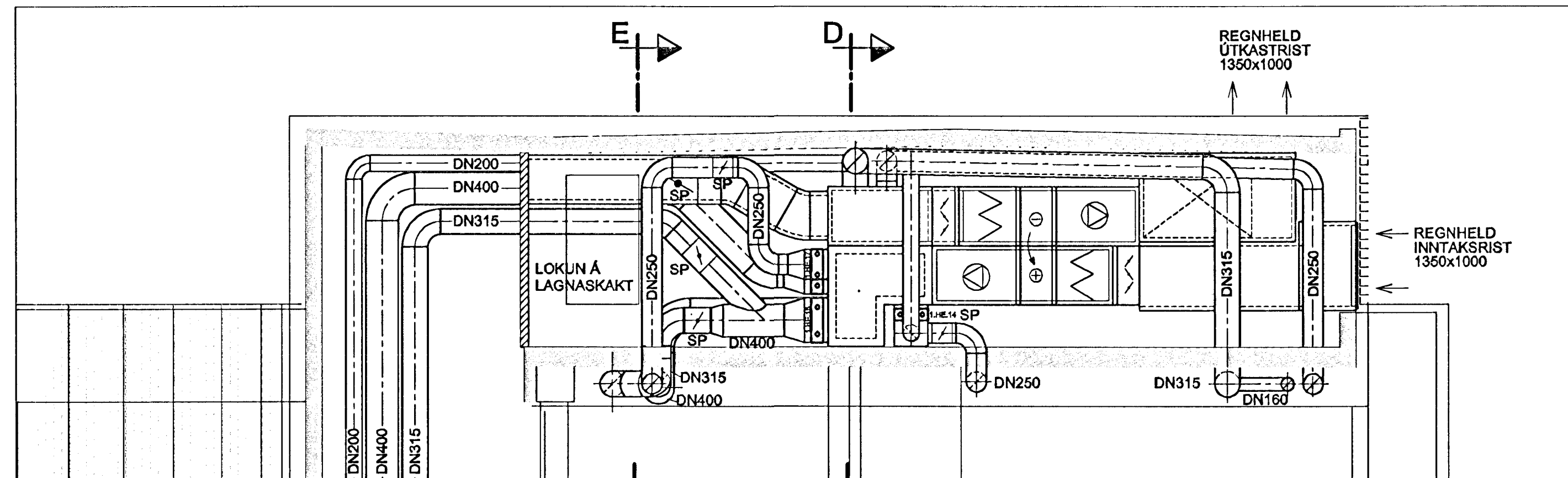
**A**  
9K-85  
168825  
1:50



**B**  
9K-85  
168825  
1:50



**C**  
9K-85  
168825  
1:50



**E**  
9K-87  
168827

**D**  
9K-87  
168827

Samþykkt þann  
22 OKT. 2003  
Byggingafulltrúinn í Hafnarfirði  
F.h. Sigurbjartur Halldórsson

Reginur Þorsteinsson  
Kl. 170347-7499

*[Signature]*

Skýringar:  
Explanations:

This drawing is the property of the Alcan Iceland Ltd. and handed out for personal use only. It may neither be copied nor made available to others without permission of the Alcan Iceland Ltd. The receiver is liable for any misuse.

Fjöldi stúkkja Number of pieces	Hlutur Object	Altrú Item	Efni Material	ea. stk. Weight (kg)	Ítalaf heild Bygnd	Alþugasemdir Remarks
IV III II I	SKRIFSTOFUHÚS SNÍÐ A-A, B-B LOFTRÆSTING					
teiknað / Drawn	ÓS	Yfirfarið / Checked	Ströumeink IS-222 Hafnarfirði	Samb.þykkt / Approved		
Alcan Primary Metal Europe ISAL Alcan Iceland Ltd						



Þv. teikningar nr. ISAL Ref. drawing no. of ISAL	Breyting Revision	Daga. Date	Samb. Approved	Notk. heimil Released

Samsætt teikningar nr. ISAL  
Assembly drawing no. of ISAL

168826