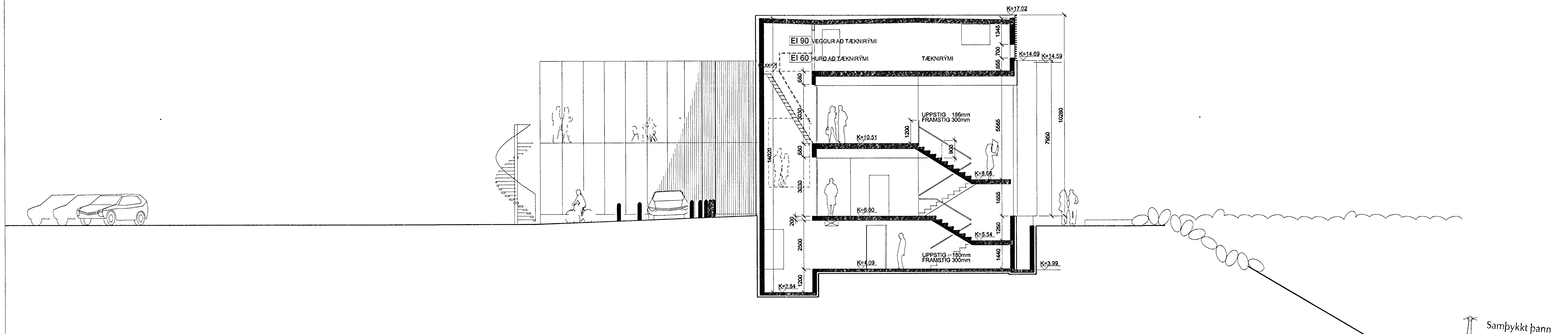


**A** SNID  
605 602  
603  
604



**B** SNID  
605 602  
603  
604

Sambýkkt þann  
21 OKT. 2003

Byggingafultrúinn í Hafnarfirði  
Eik Sigurbjartur Hallgrósson

Skýringar:  
Explanations:

INGIMUNDUR SVEINSSON  
JÓHANN EINARSSON  
ÓLAFUR ÓSKAR AXELSSON  
ÞÓRÐIS ZOEGA

**tis**  
Teiknistofa  
Ingimundar  
Sveinssonar  
Ingólfrstræti 3  
101 Reykjavík  
Sími 5204900  
Fax 5204901  
tis@tis.is  
www.tis.is

Breyt. Rev.	Breyting Revision	Dagur Date	Samb. Approved	Notk. heiml. Released
1	Aðalteikning	010703	010703	

Tilvit. teikningar nr. ISAL  
Ref. drawing no. of ISAL

Samsættn. teikningar nr. ISAL  
Assembly drawing no. of ISAL

This drawing is the property of the Alcan Iceland Ltd. and handed out for personal use only. It may neither be copied nor made available to others without permission of the Alcan Iceland Ltd. The receiver is liable for any misuse.

Fjöldi stúkkja Number of pieces	hlutur Object	Afriti Item	Efni Material	Lea. þik Weight (kg)	Stærð Format	Mhl. Scale	Althugsæmdir Remarks
IV III II I	SKRIFSTOFUHÚS ALCAN				A1	1:100	
	SNID						
	Teiknað / Drawn	JE/LGS	01072003	Yfirfarið / Checked	JE	01072003	Sambýkkt / Approved
	ALCAN PRIMARY METAL EUROPE						
	ISAL						
	IS-222 Hafnarfjörður						
						168605	1