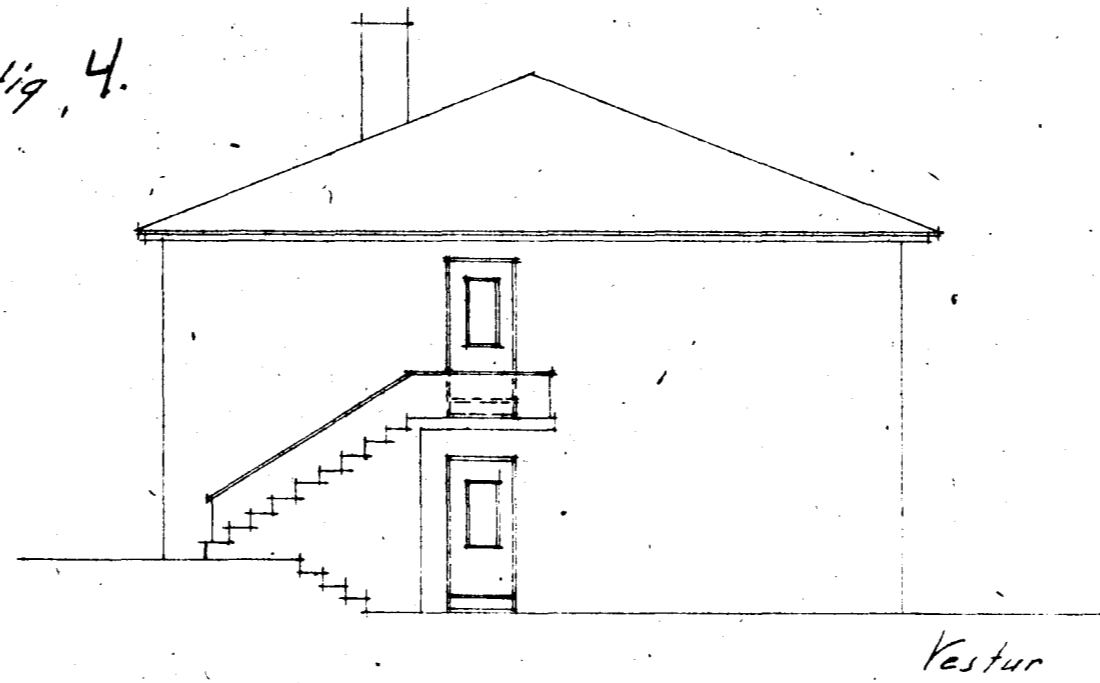
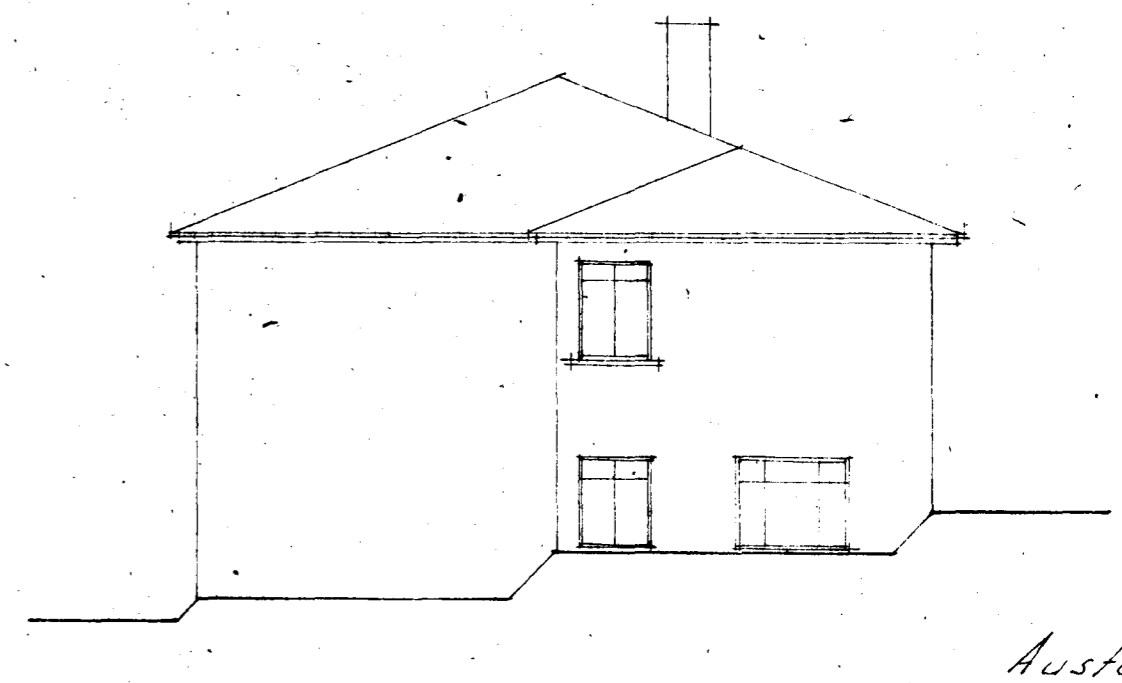


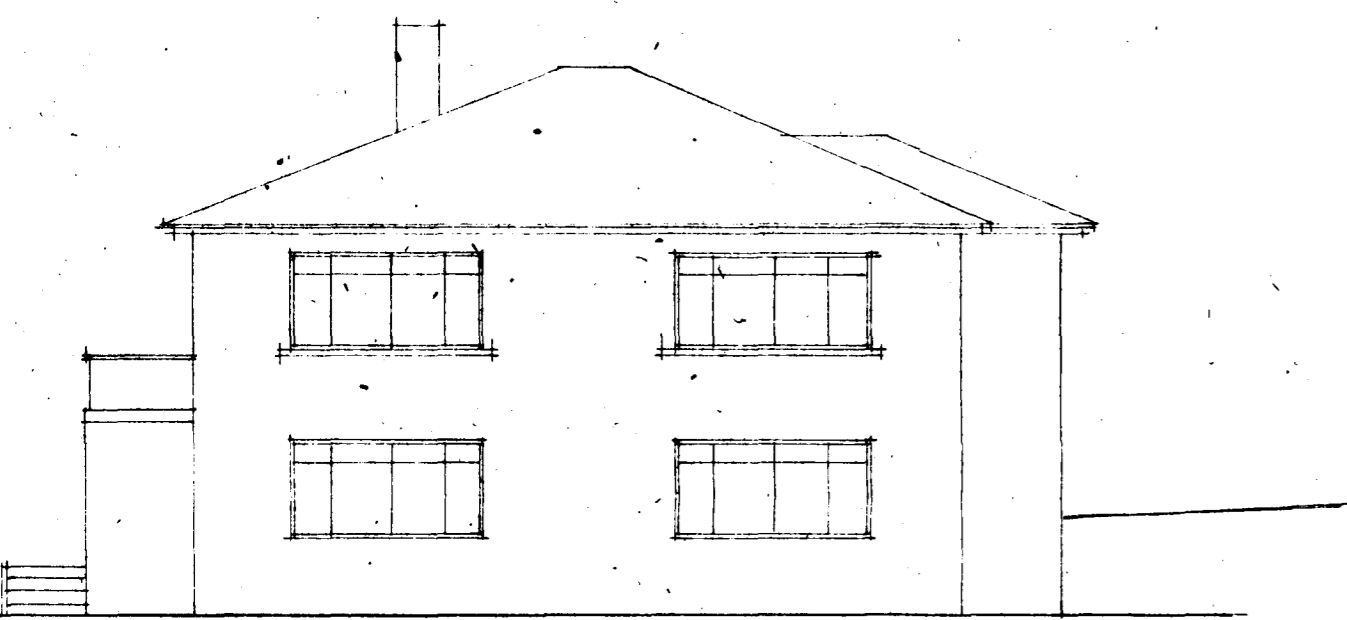
Hús Sigurðar Gíslasonar og Ólafs Sigurðssonar við Vitastíg 4.  
 nr. 4 í Hafnarfirði  
 M. 1=100



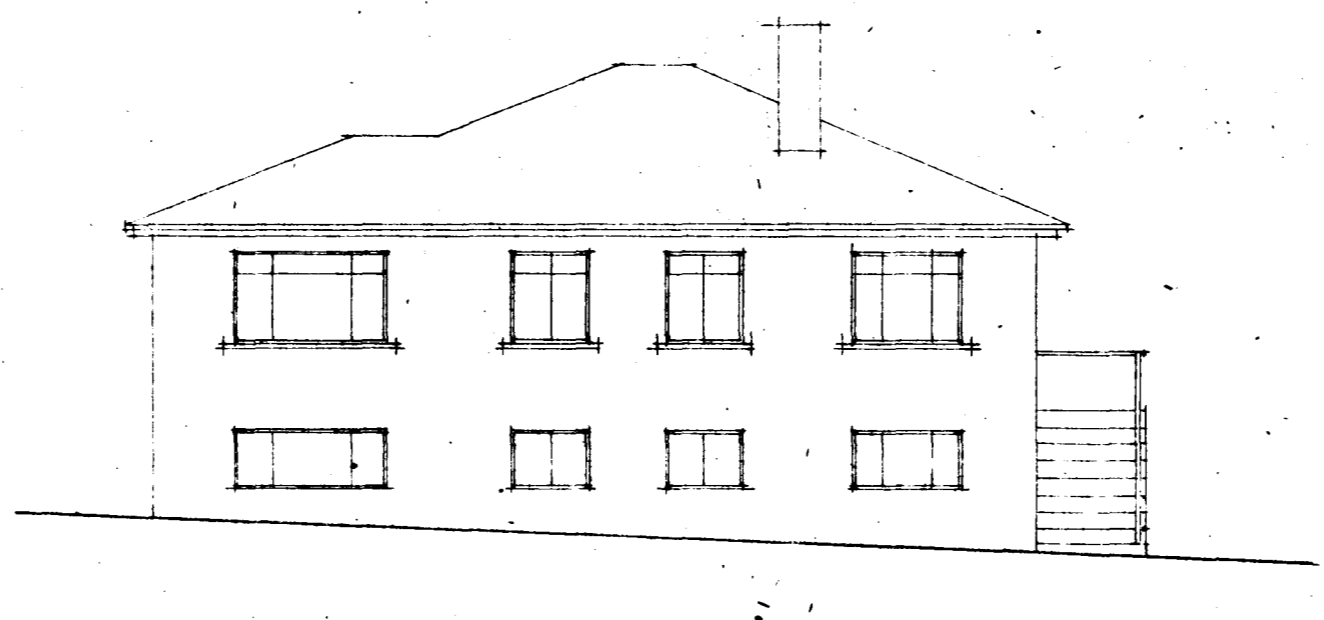
Vestur



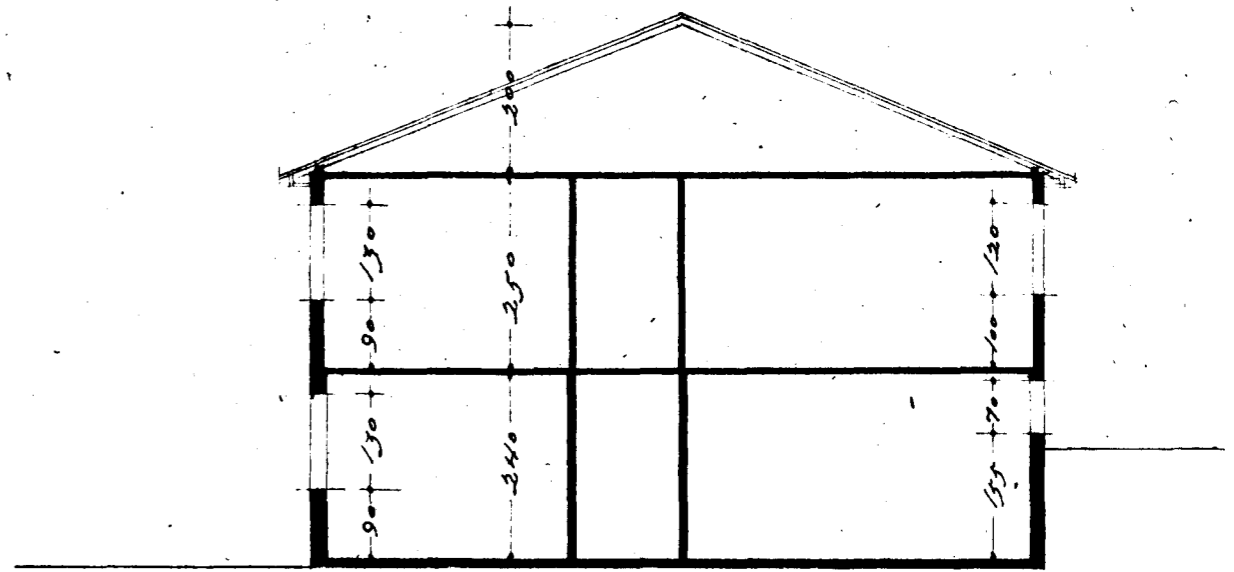
Austur



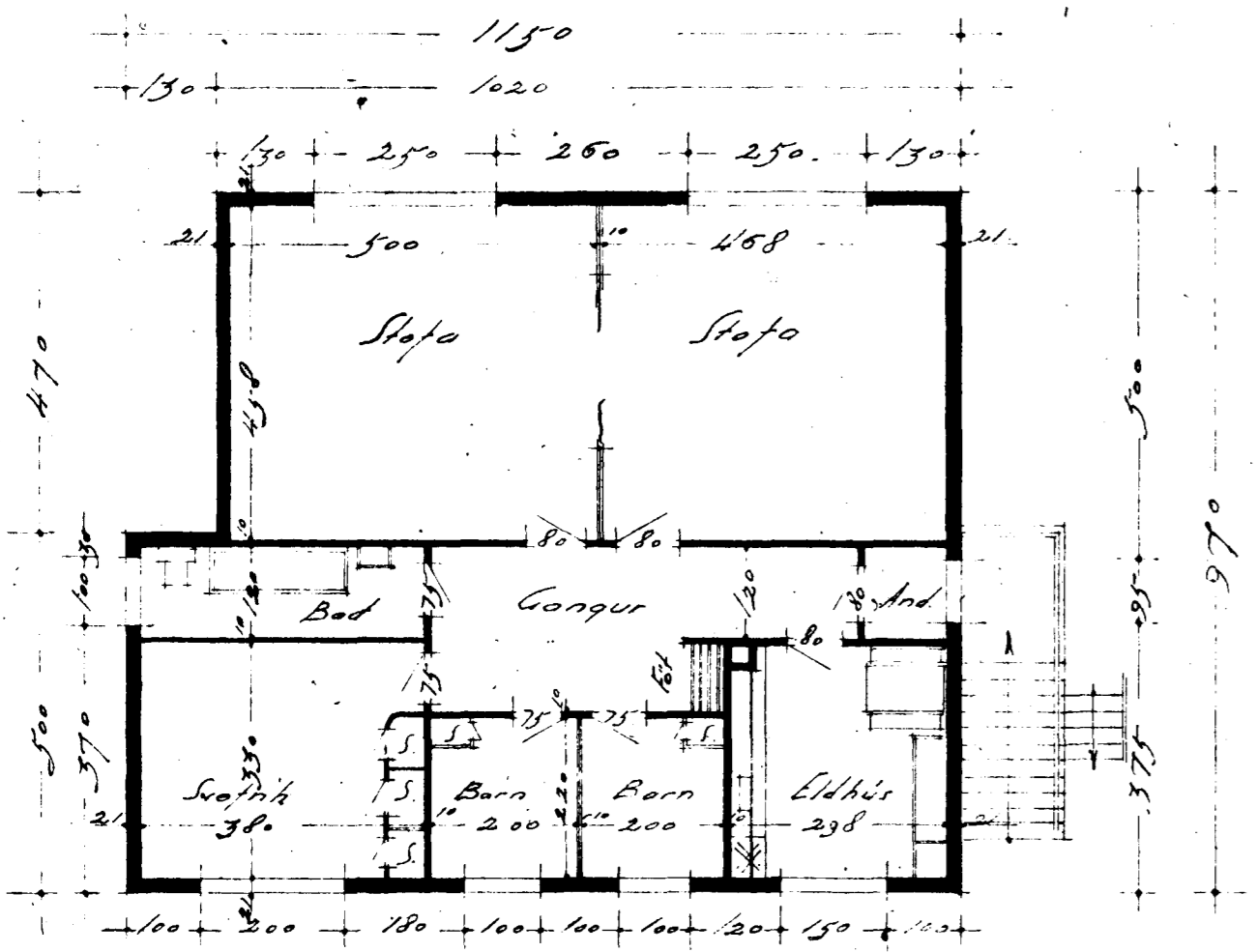
Sudur



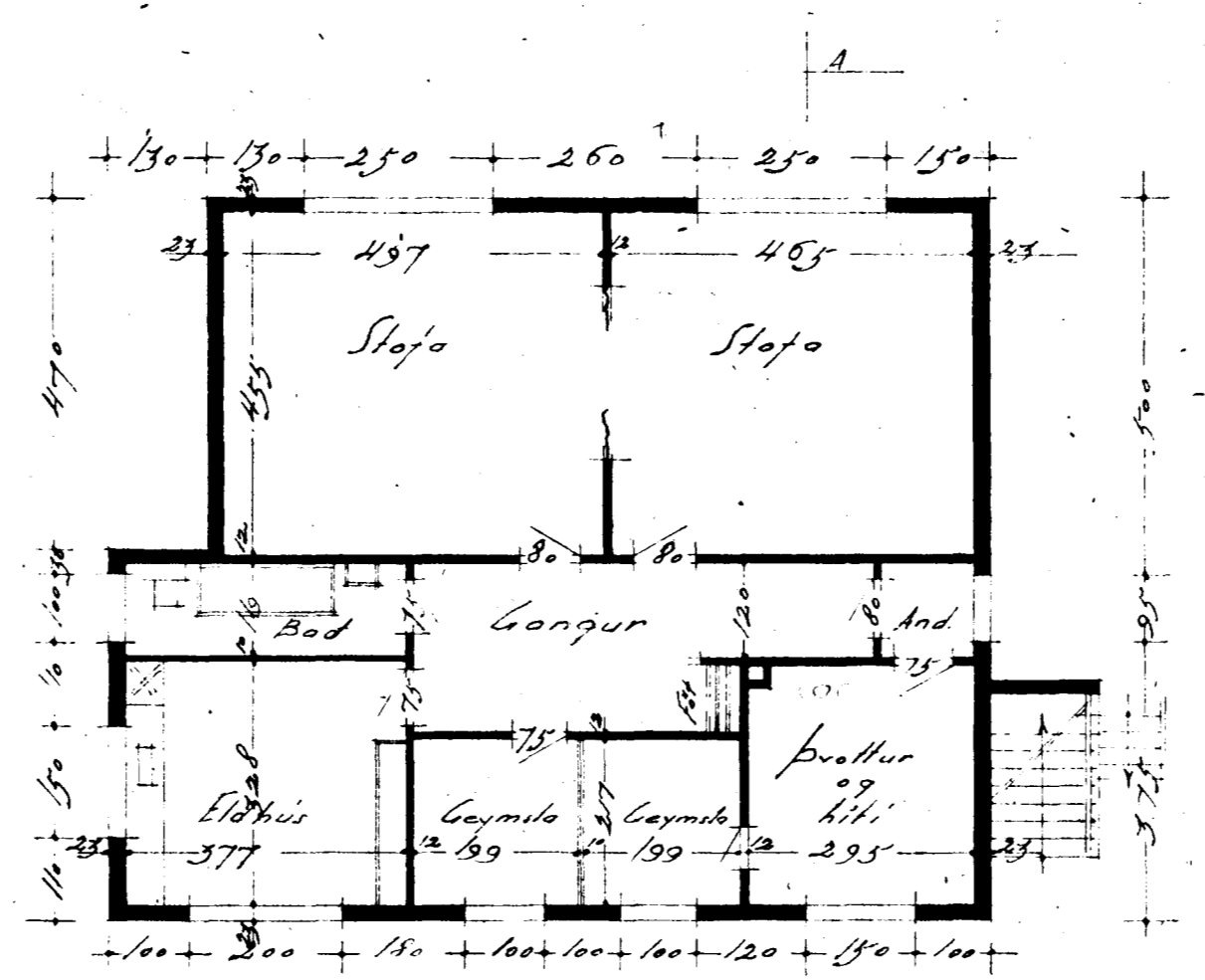
Nordur



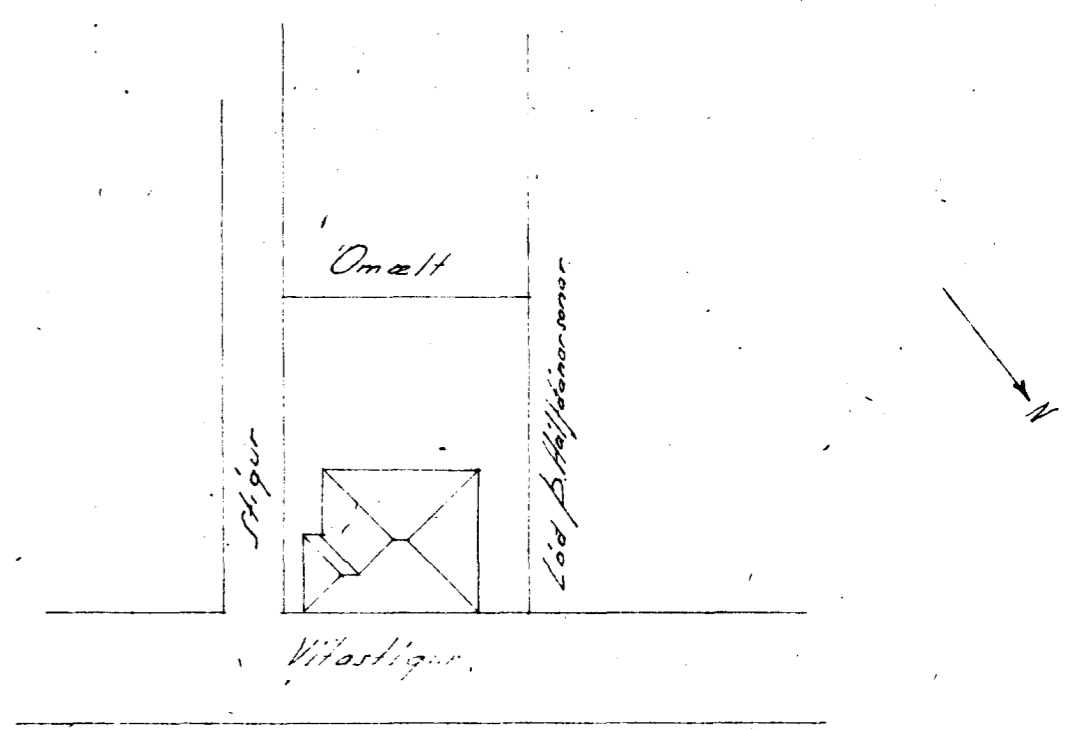
Skurður A-A.



Hálinn



Kjallari



Afskiðmynd  
 M. 1/500

Hafnarfirði, apríl 1946  
 Ög. Guðmúndsson