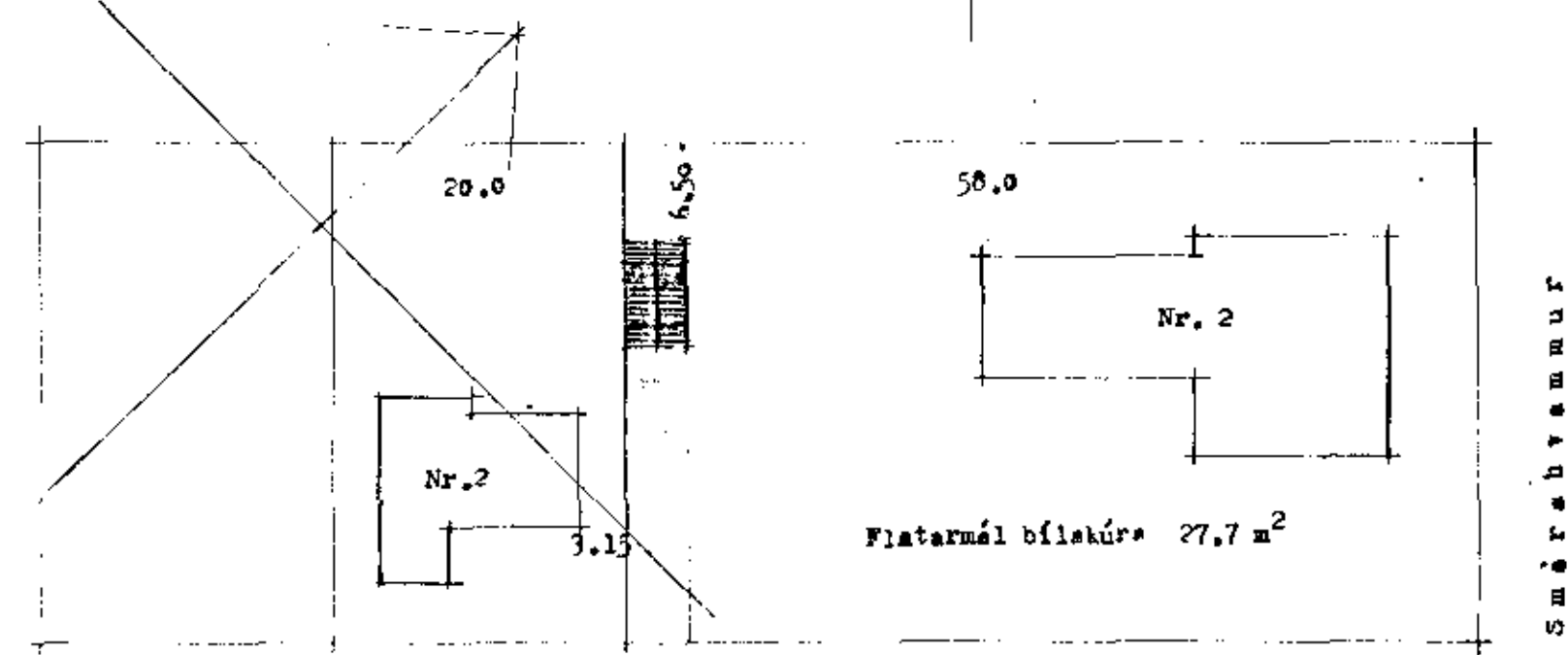
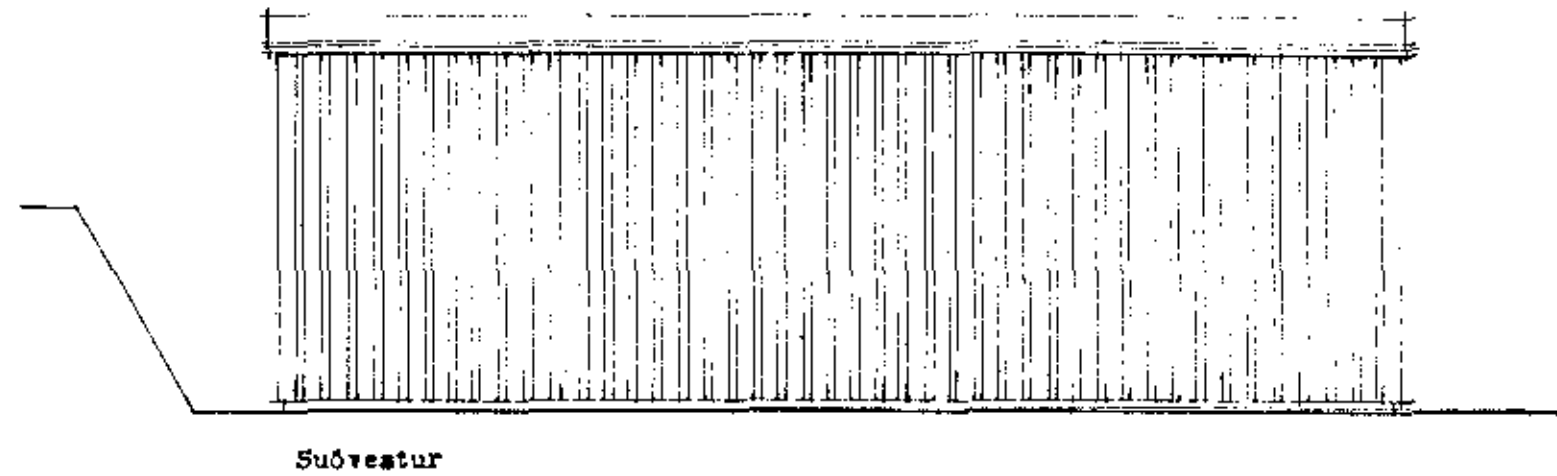
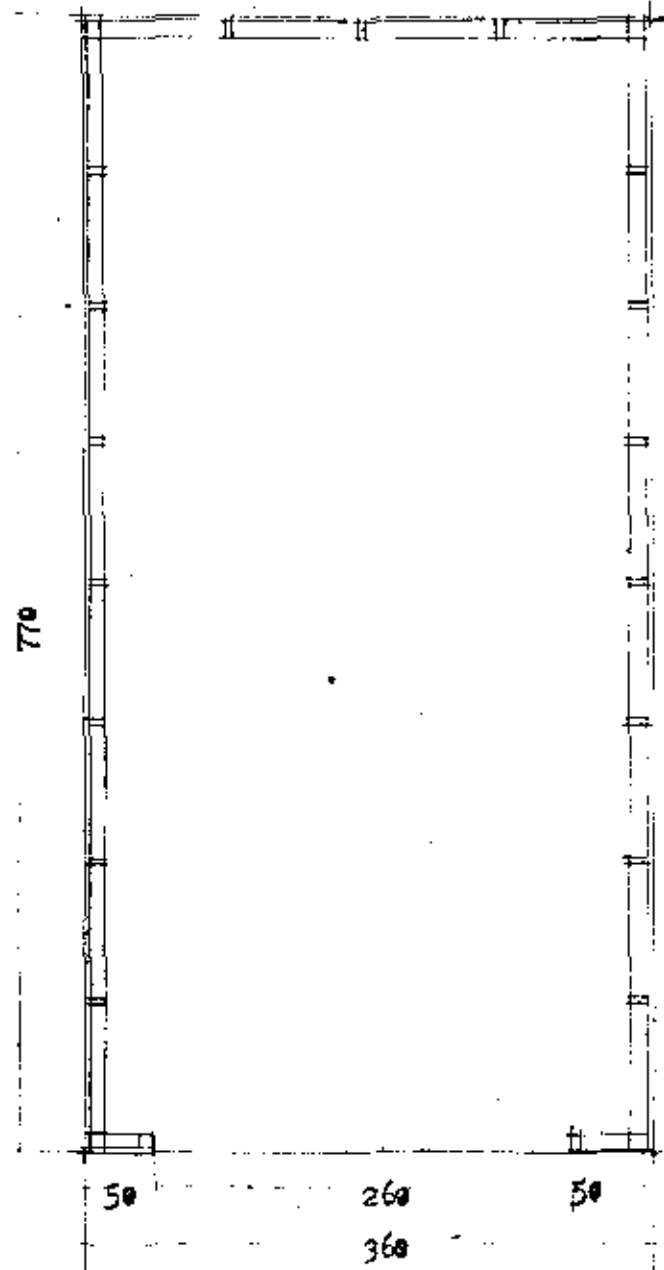


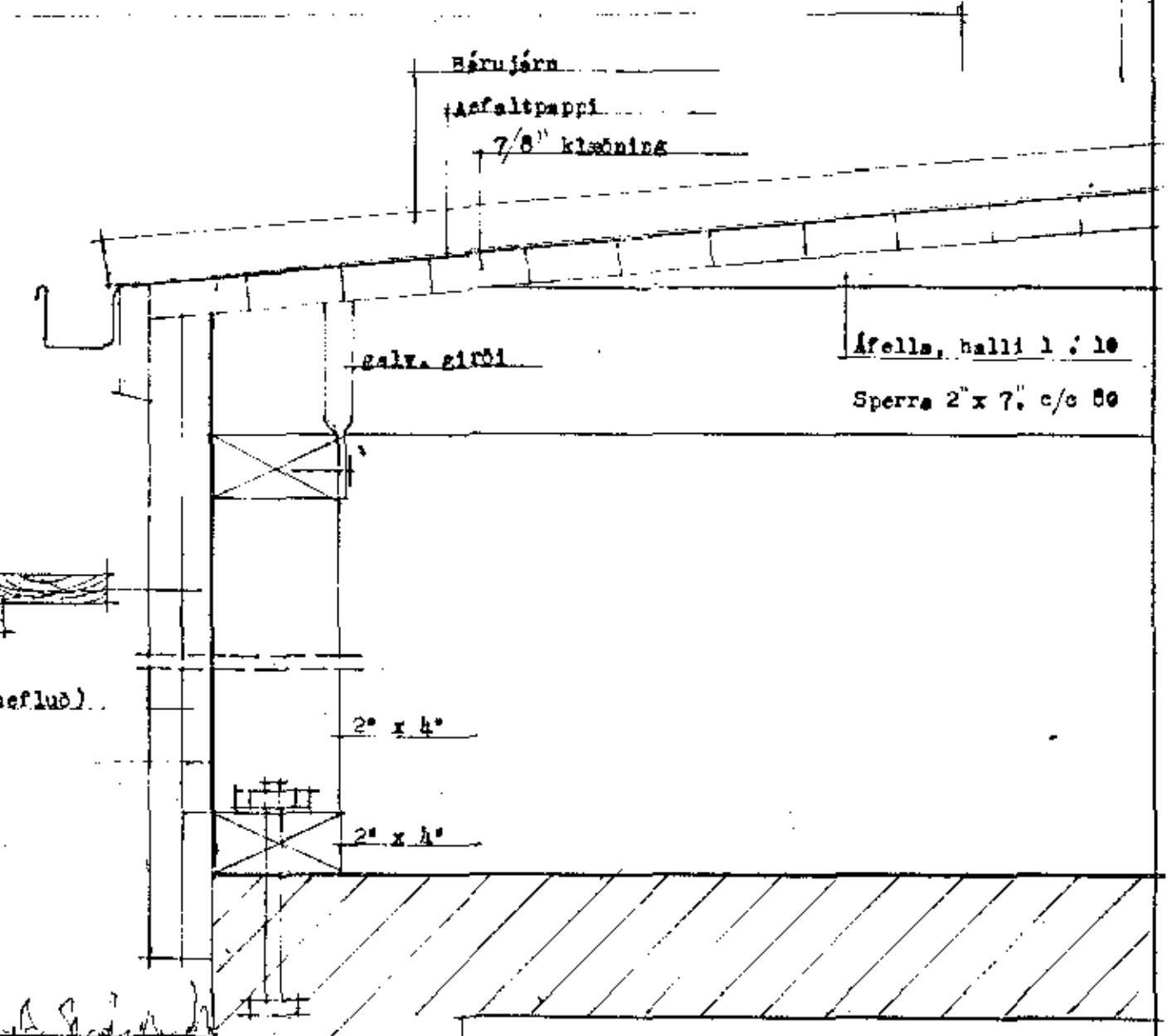
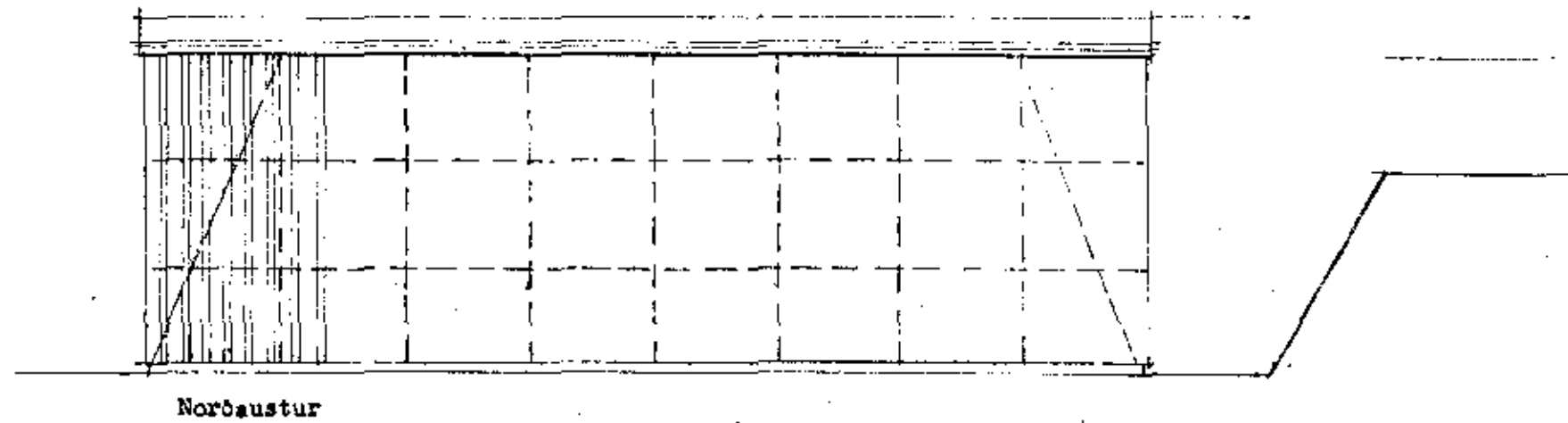
A t h. Hér er um bráðabirgða byggingu að ræða.
Bifreiðageymslan stendur á lóðinni
nr. 2 við Smárahvamm, samkvæmt
leyfi lóðarhafa.

Afstæða 1.500

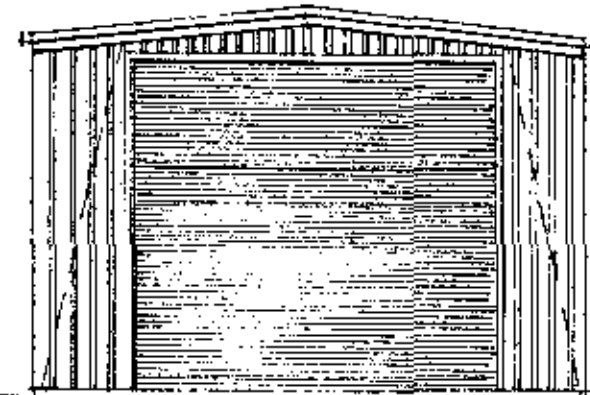
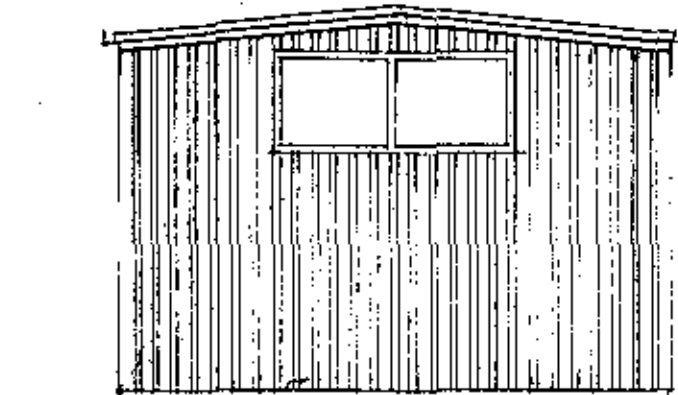
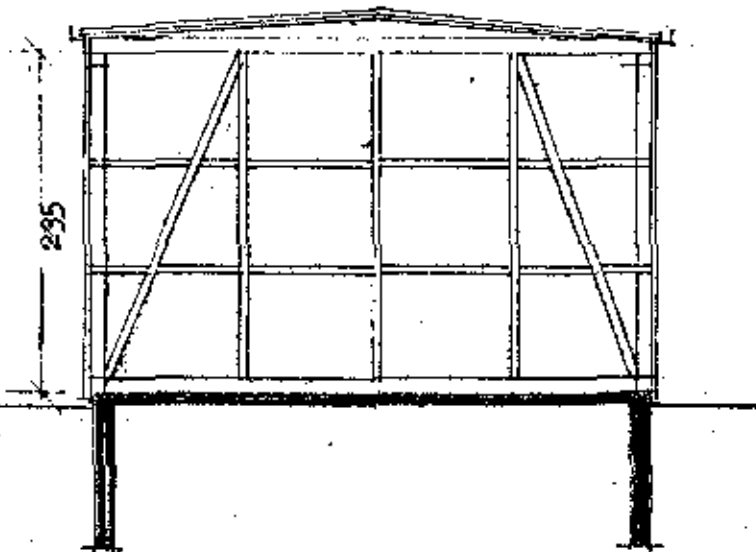


Flatarmál bílskúrs 27,7 m²

Brekkuhvammur



Sneiðing



Norðvestur

Suðaustur

BÁRDUR DANIELSSON, ARKITEKT OG VERRFRÆÐISTOFA
LAUGAVEGI 103, REYKJAVÍK, SÍMI 24111

Brekkuhvammur 2	Kvarði	Teikn.	Ath.
	1.50	BD	BL
	1.5	Reikn.	BL
Breyting			
Bifreiðageymsla úr timbri			
Bárdur Danielsson, ark.			
Rvk. Okt. 1965			