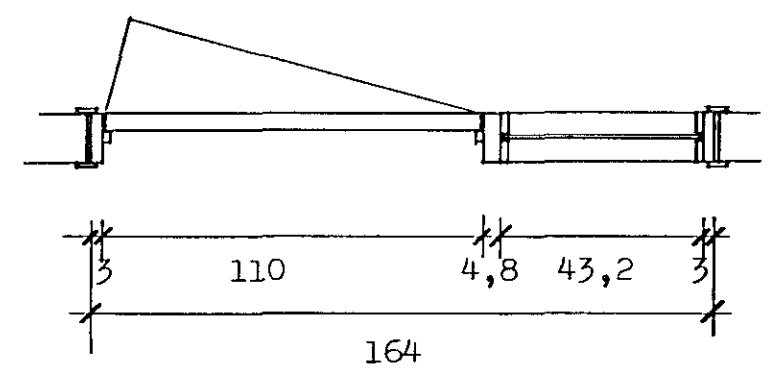
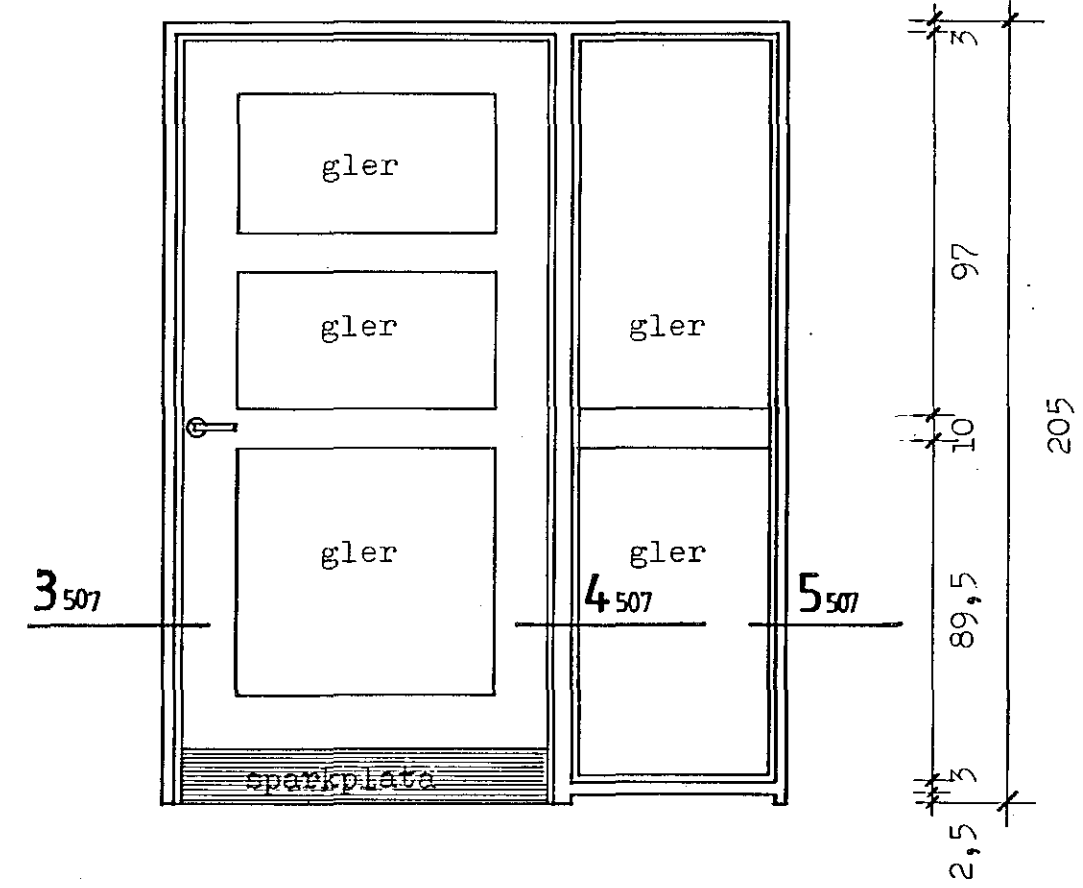
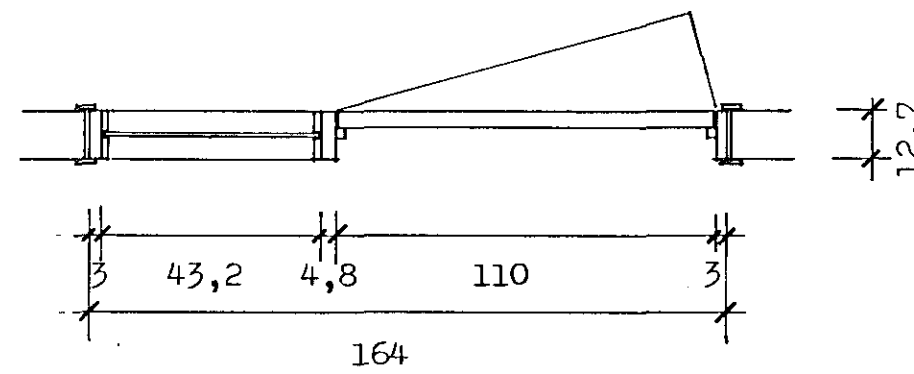
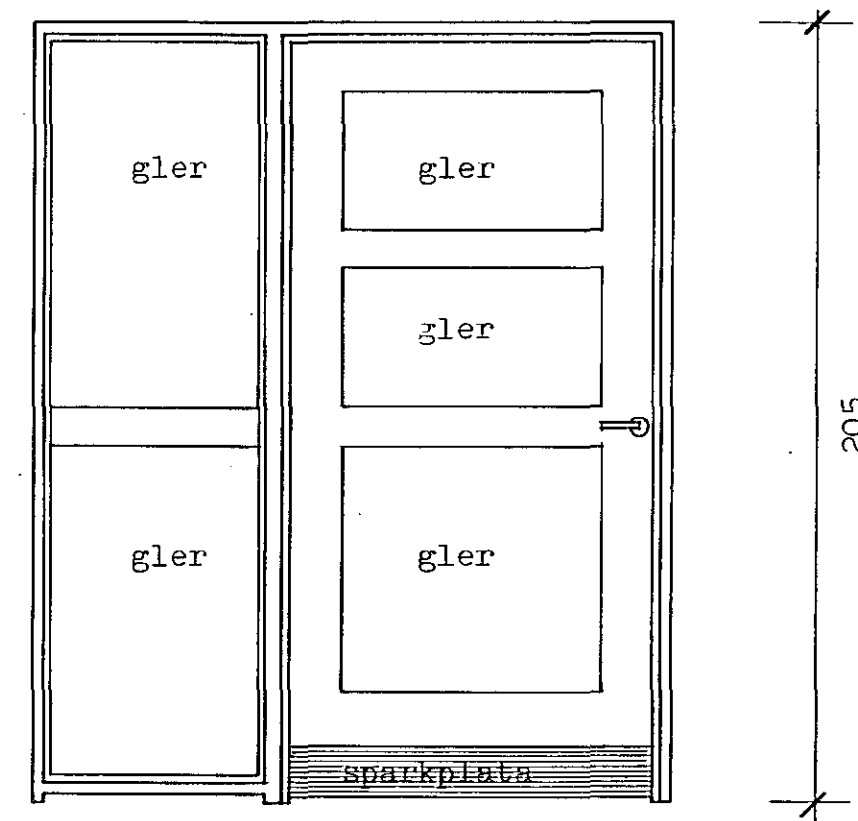


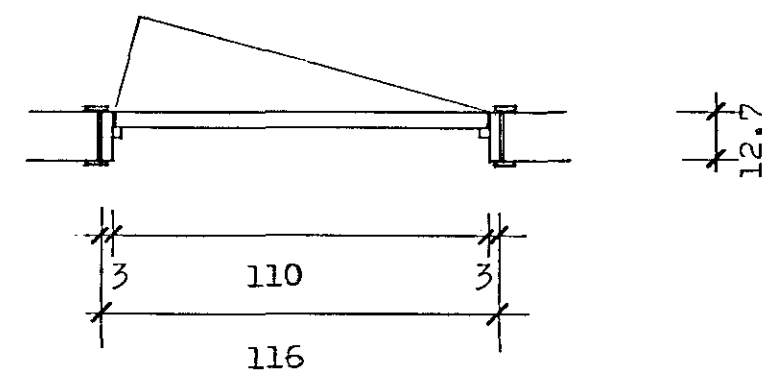
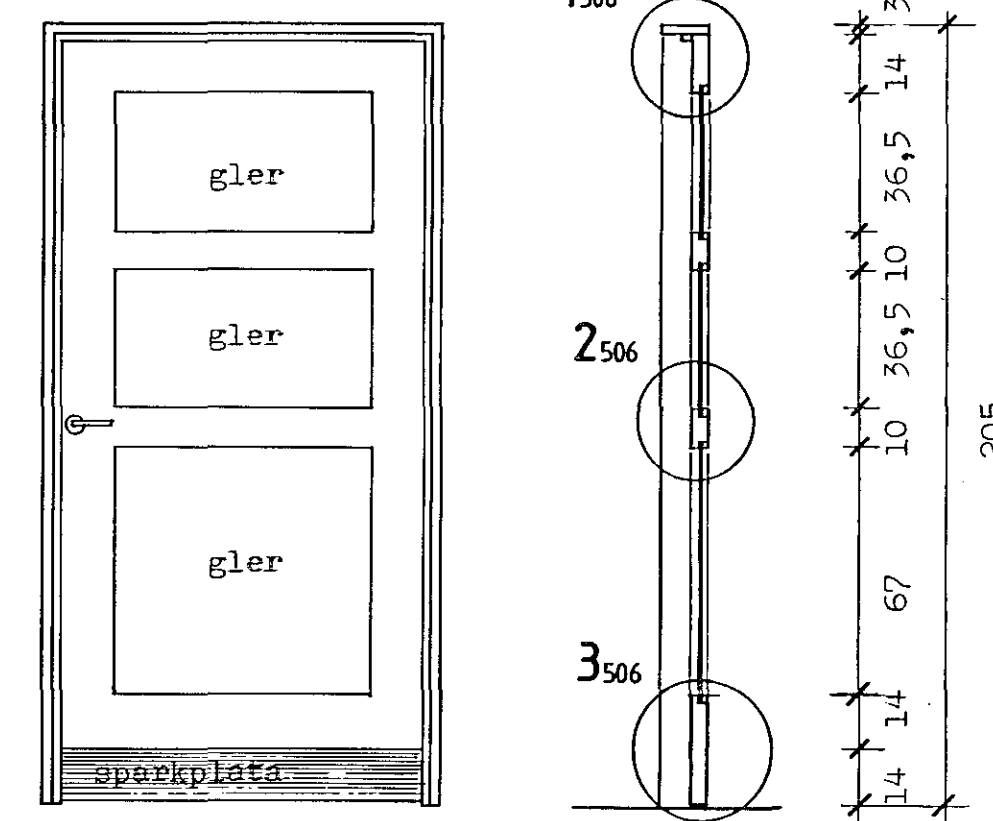
H1 1 stk. vinstri



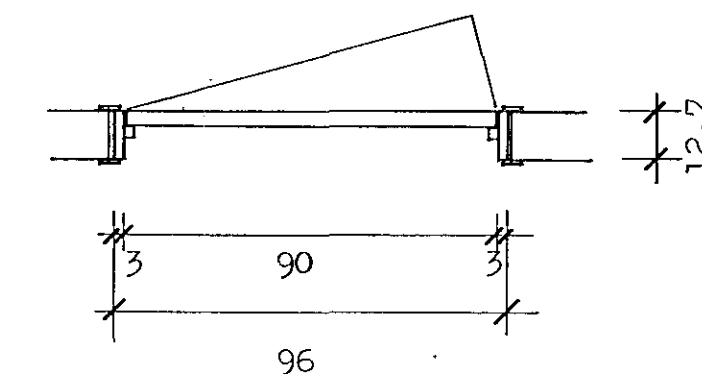
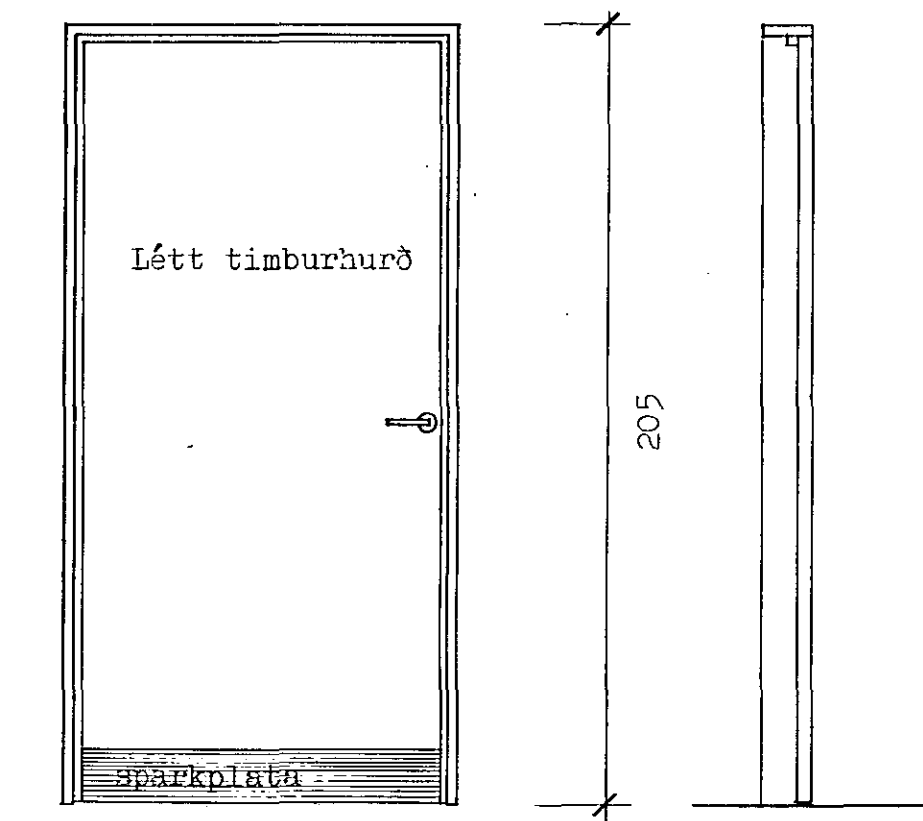
H2 1 stk. hægri



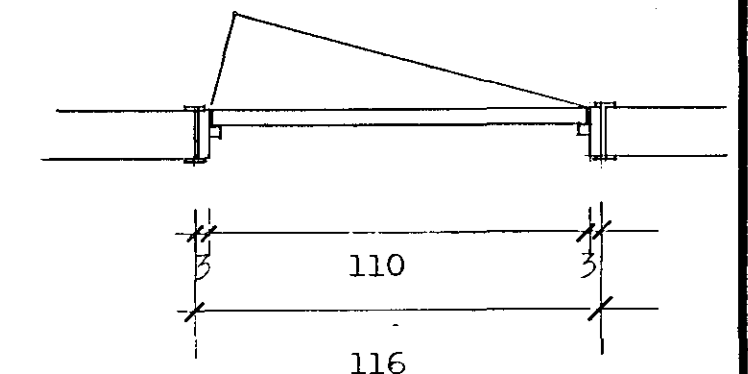
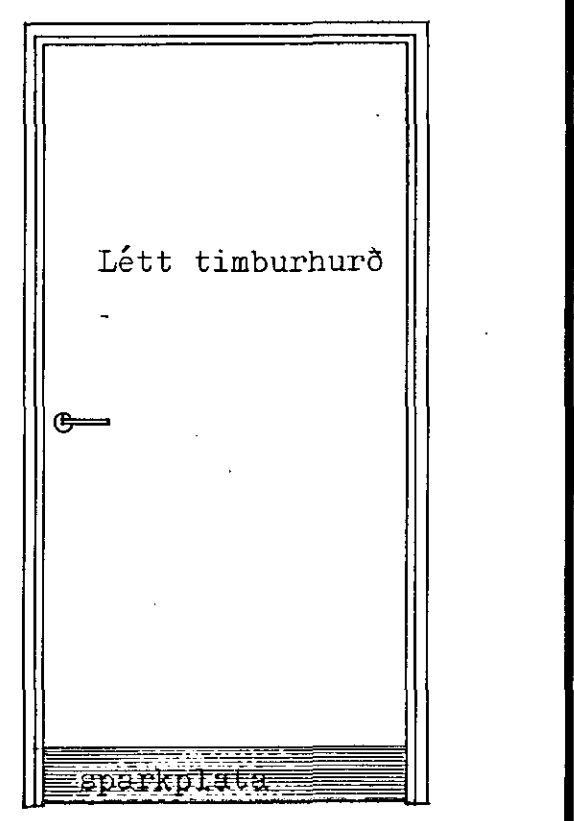
H3 2 stk. vinstri



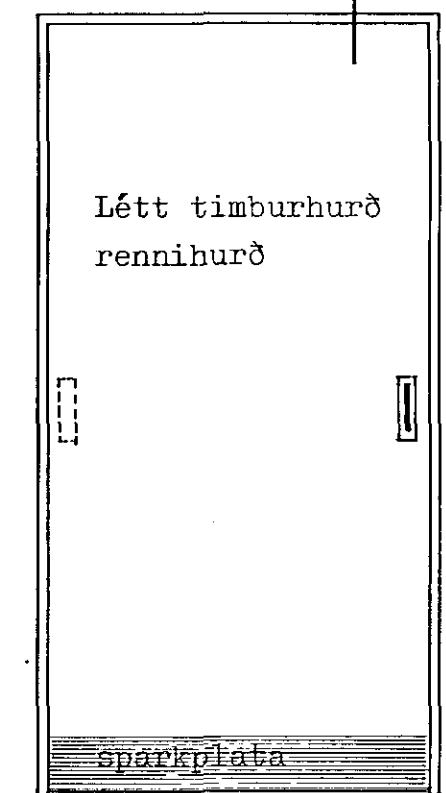
H4 1 stk. hægri



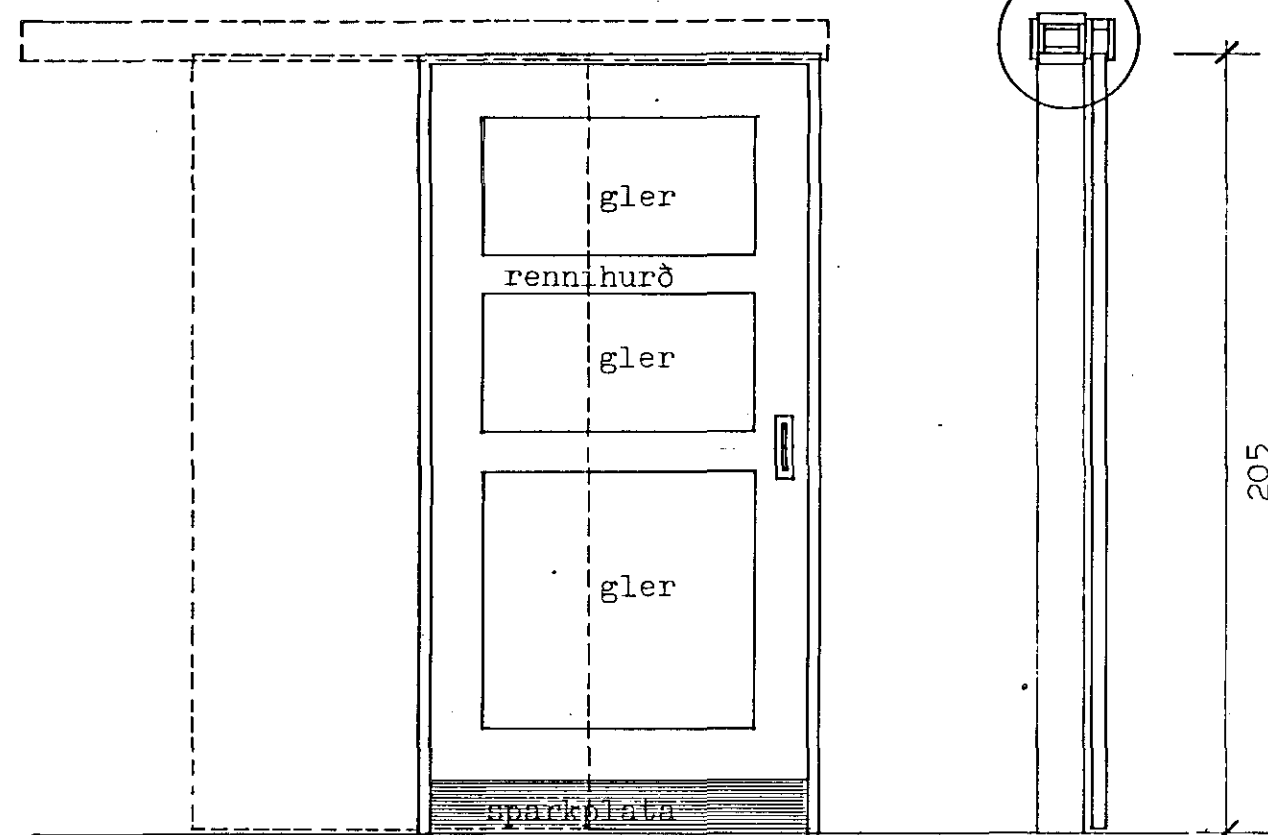
H8 1 stk. vinstri



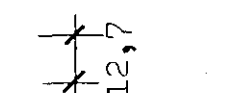
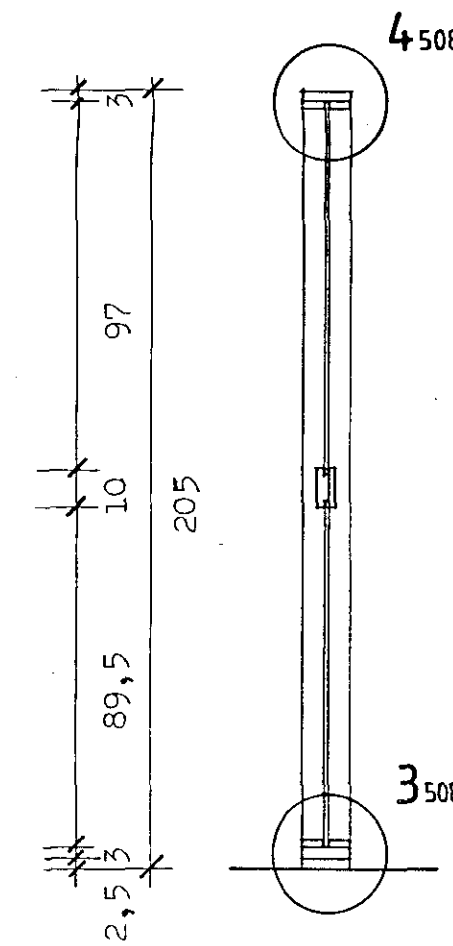
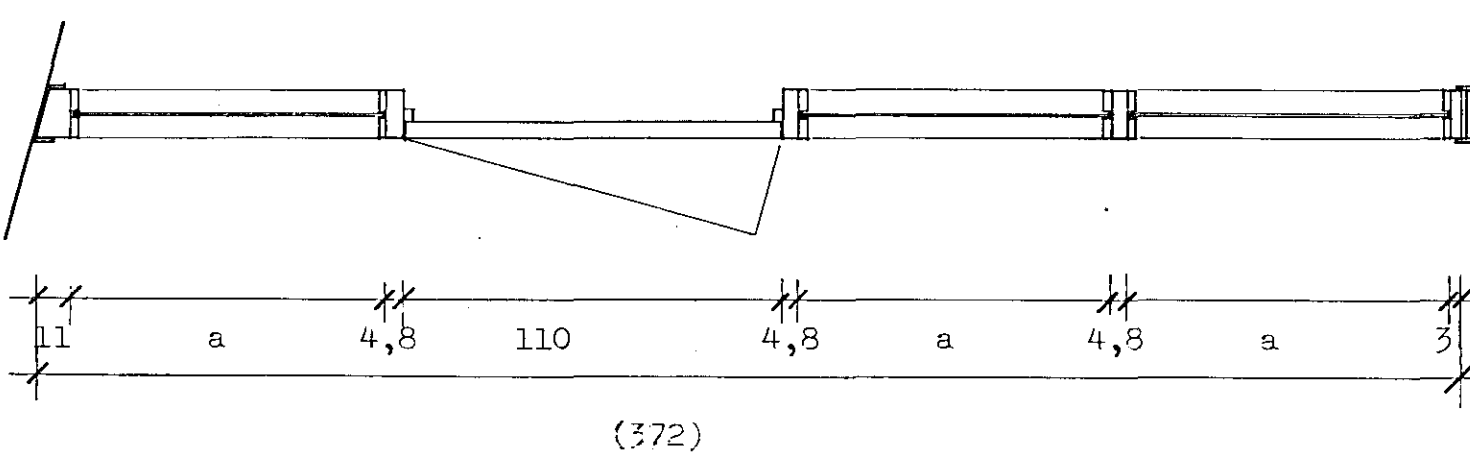
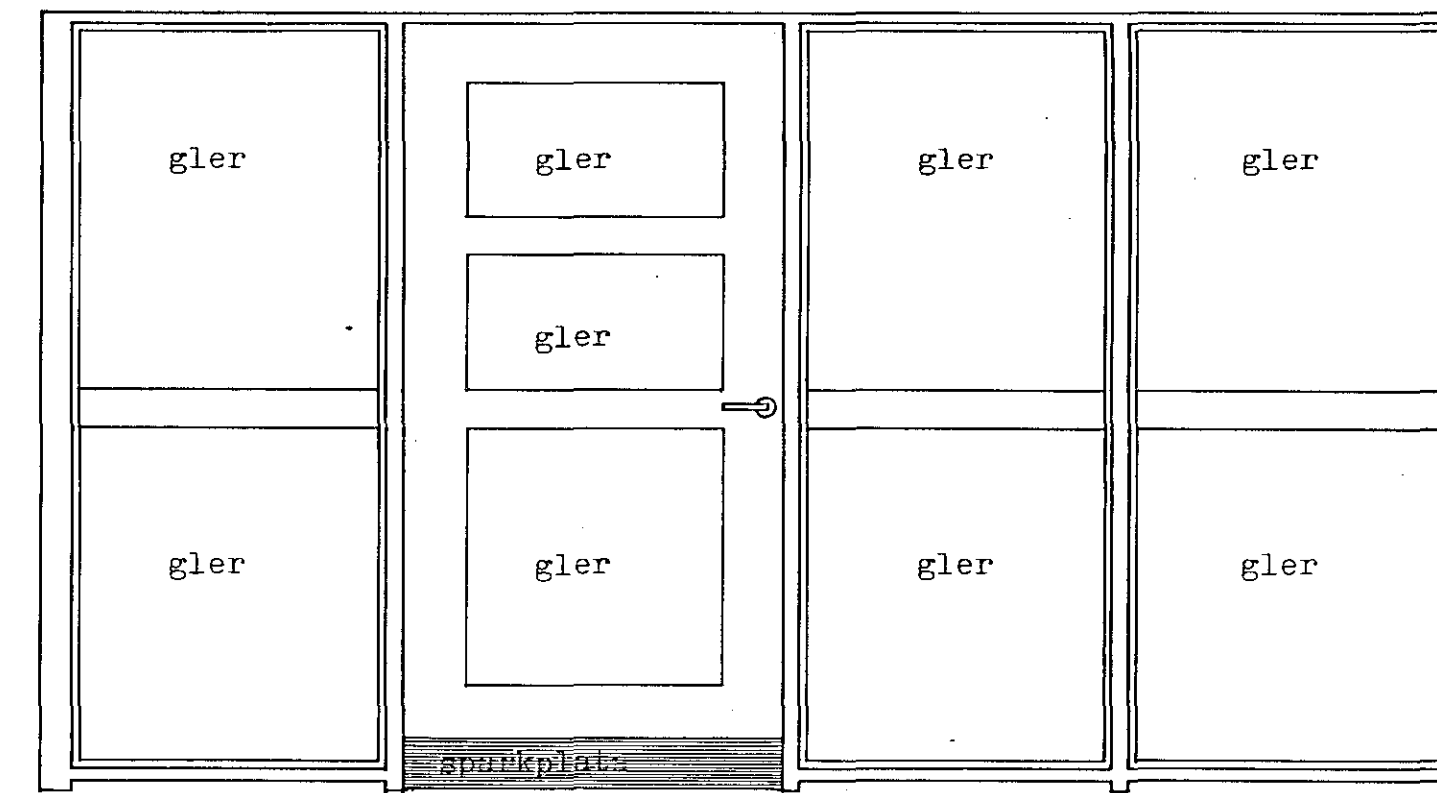
H5 4 stk. 6508



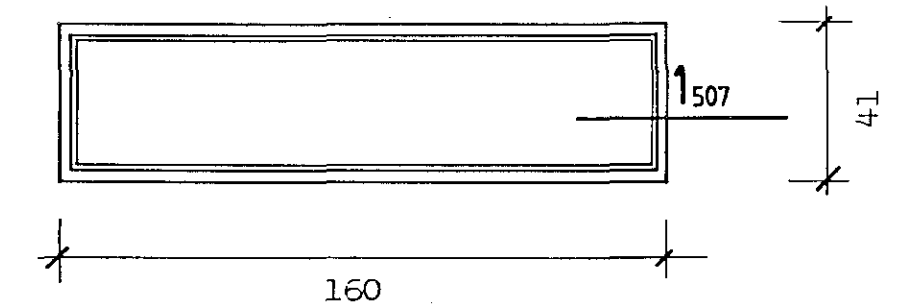
H6 1 stk. 7508



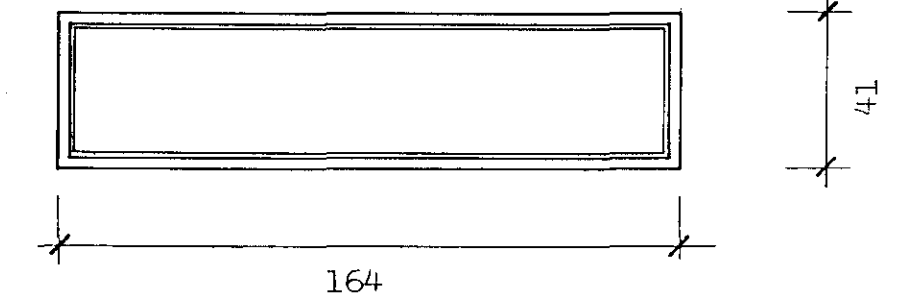
H7 1 stk vinstri



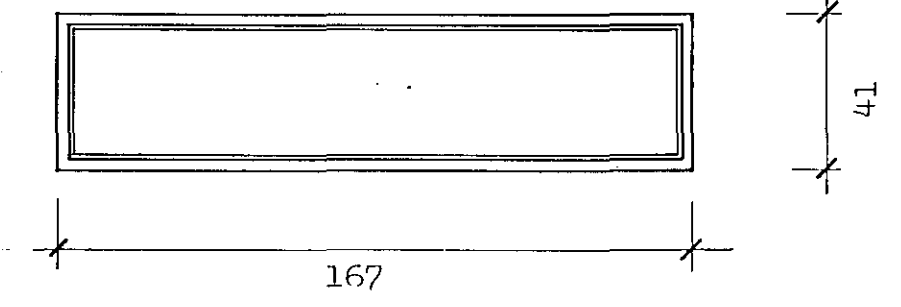
G1 1 stk.



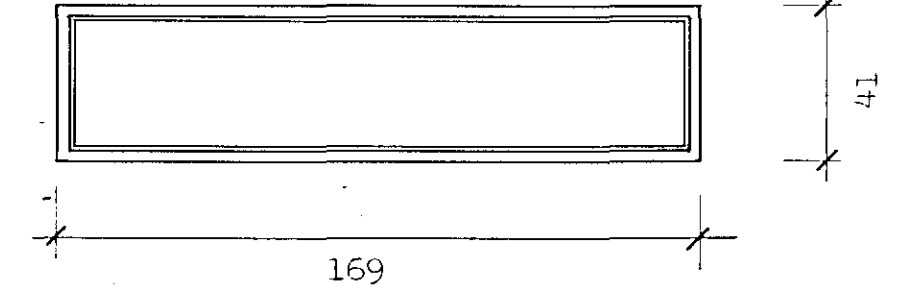
G2 2 stk.



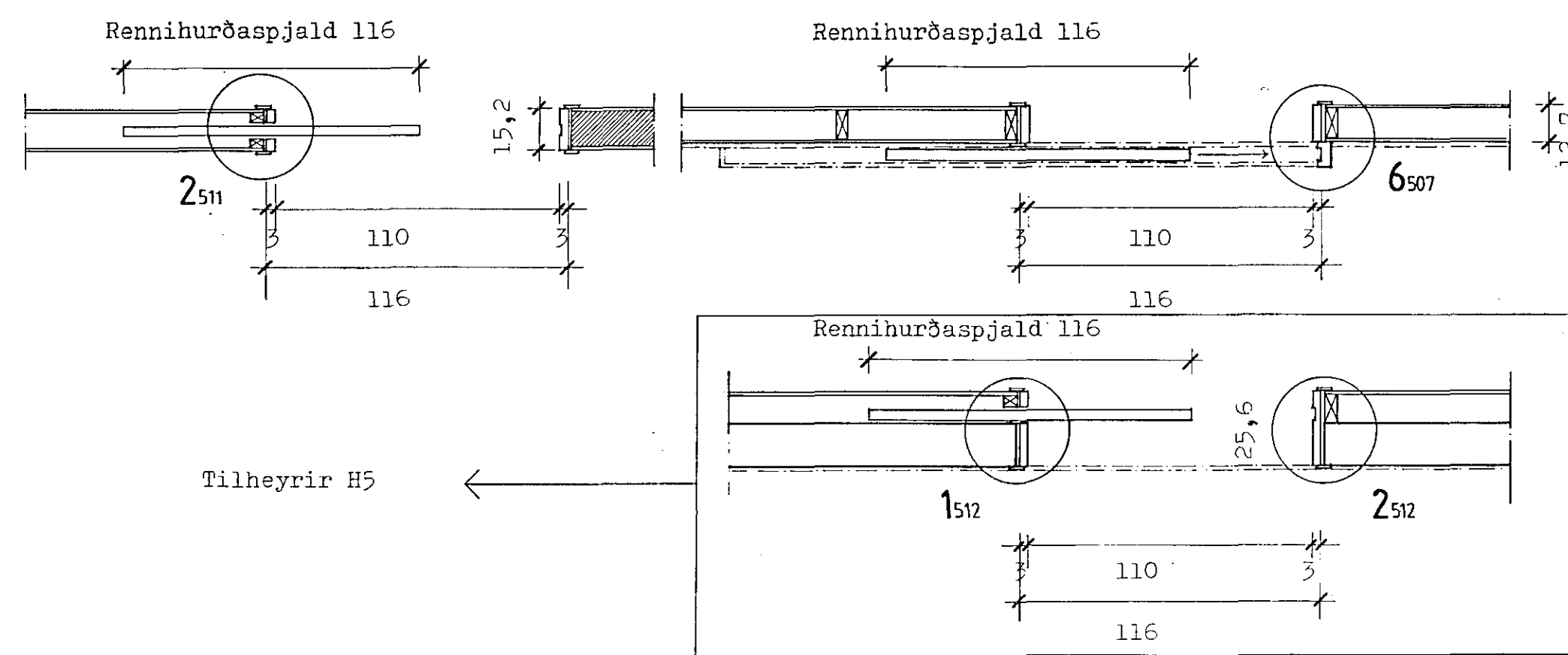
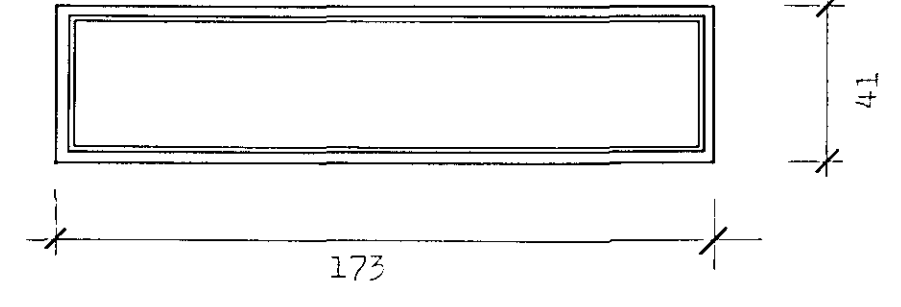
G3 2 stk.



G4 3 stk.



G5 3 stk.



ATH: MÁL TAKIST Á  
STADNUM ADUR EN SMÍÐI  
HEFST

<b>TEIKNISTOFA</b> GYLFI GUDJÓNSSON ARKITEKT <small>SKÓLAHORÐUSTÍG 3 VII REYKJAVÍK SM 2870</small>	BÆJARHRAUN 2, Hsfnarfirði Dégvíst Fatlaðra	VERK 89-295 BLAD
	INNRETTINGATEIKNING Innihurðir og gluggaein- ingar, málsett útlit	<b>509</b>
HANNAÐ gy/as TÆKNAD as KWAFD 1:20	REYKJAVÍK 1990-03-20 BREYTT	