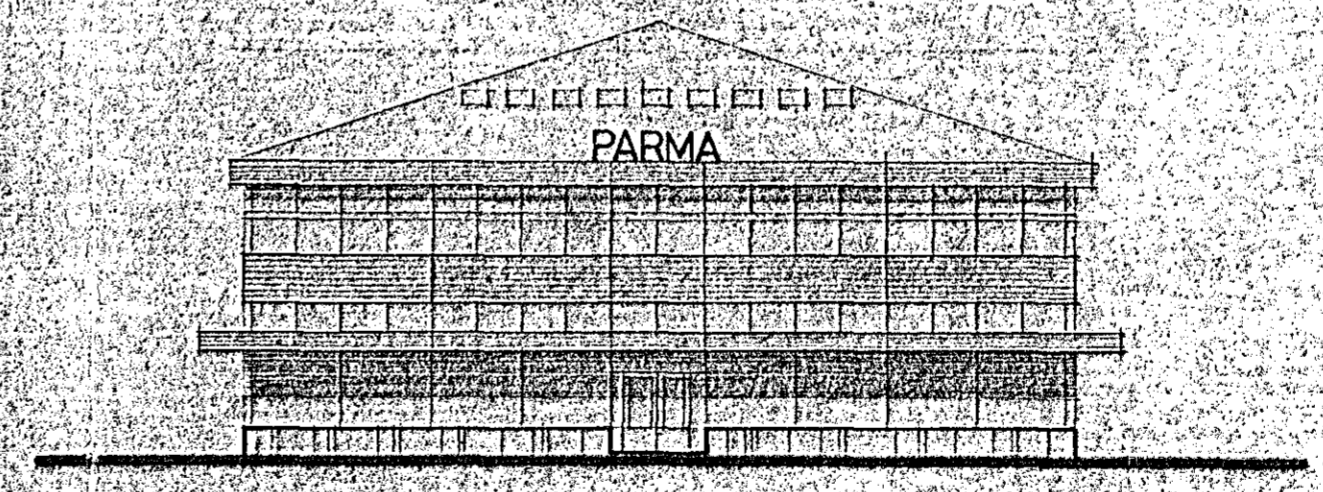
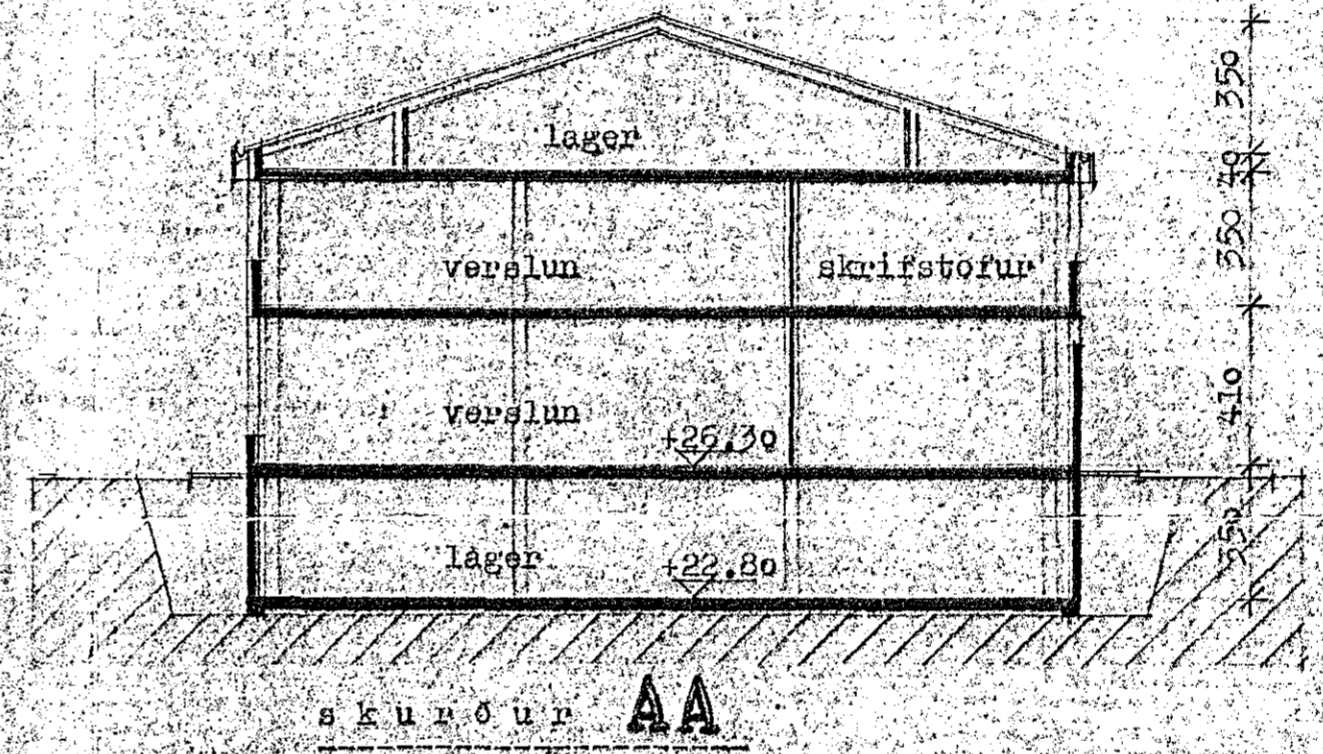
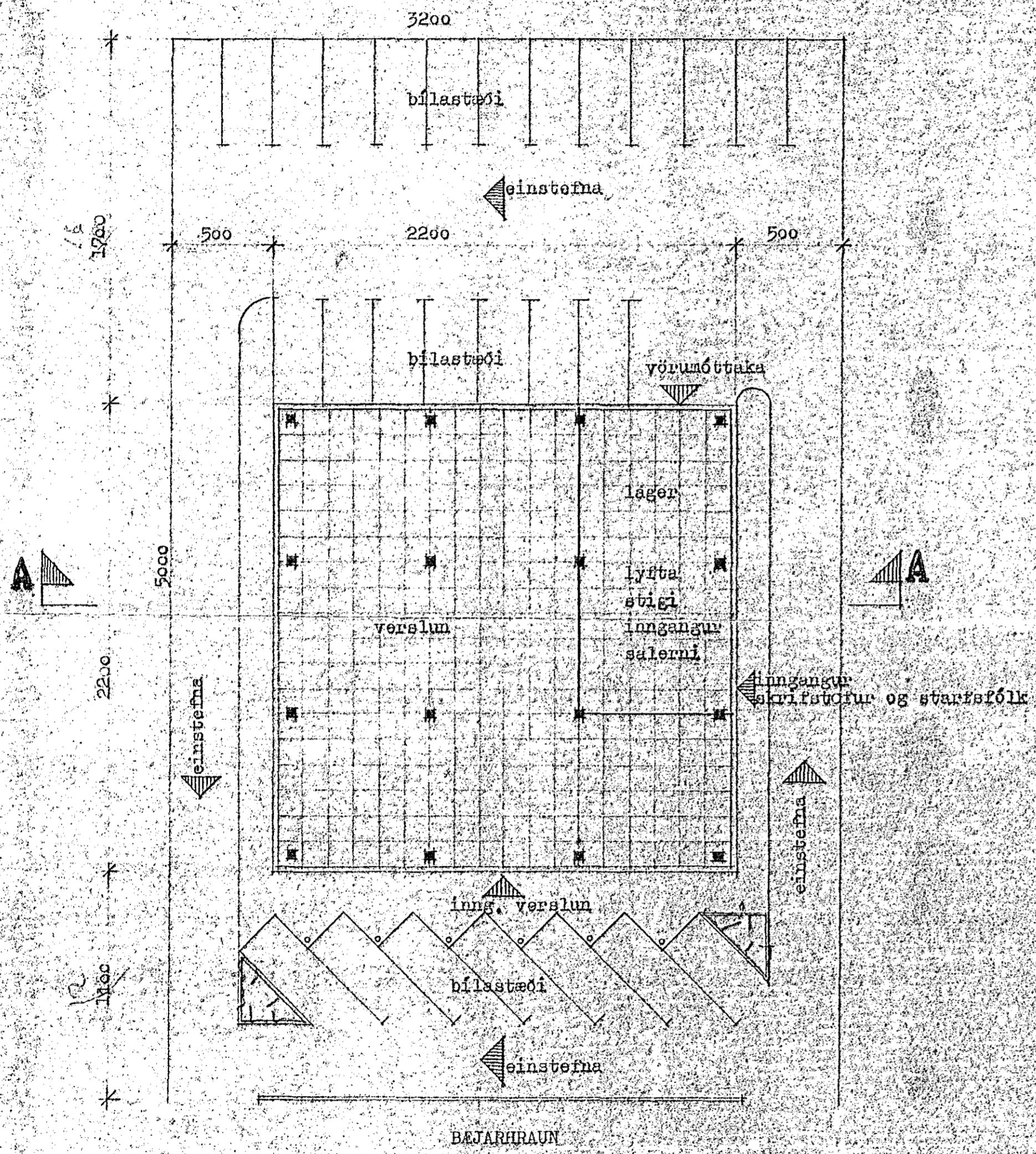


Flatarmál kjallara	484 m ²
Flatarmál 1. hæðar	484 m ²
Flatarmál 2. hæðar	484 m ²
Flatarmál bakhæðar	174 m ²
Flatarmál samtals	1626 m ²
Rúmmál	6132 m ³
Flatarmál loftar	1600 m ²
Nýting	1.02
Fjöldi plastæða á 160	27



Bejarhraun 18 Harnarríði
Frumtillaga

KVARDI 1:200
DAGS. 10/1982
TEIKN. aam
YFIRF.

Stíkan st. Grensásvegi 8 sími 81530
Asmundur Harðarson arkitekt PAF
Karl-Erik Róksón arkitekt PAF