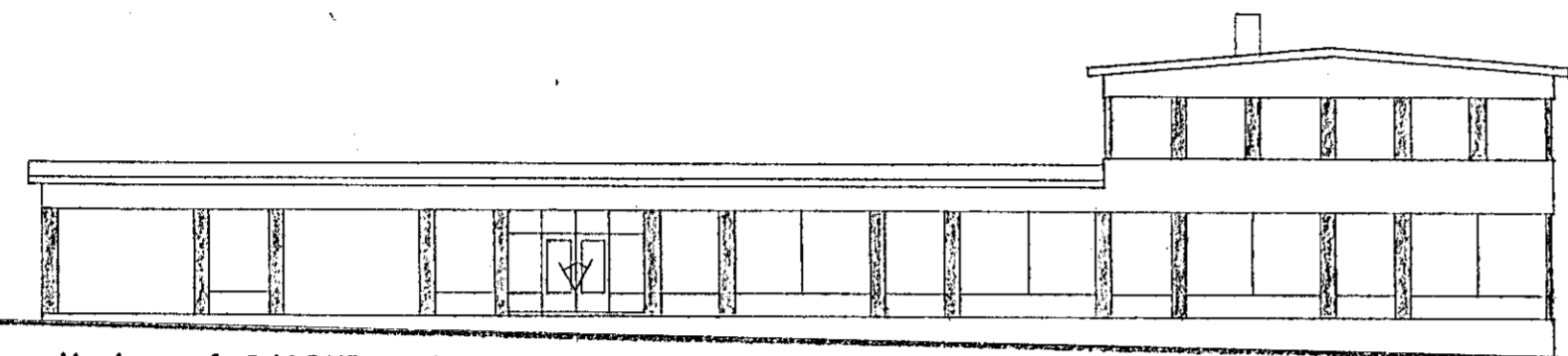
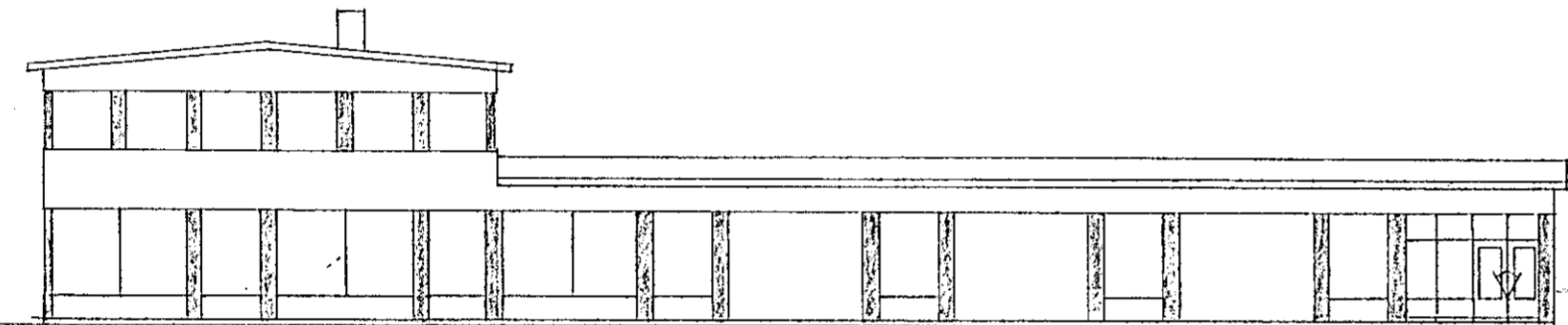


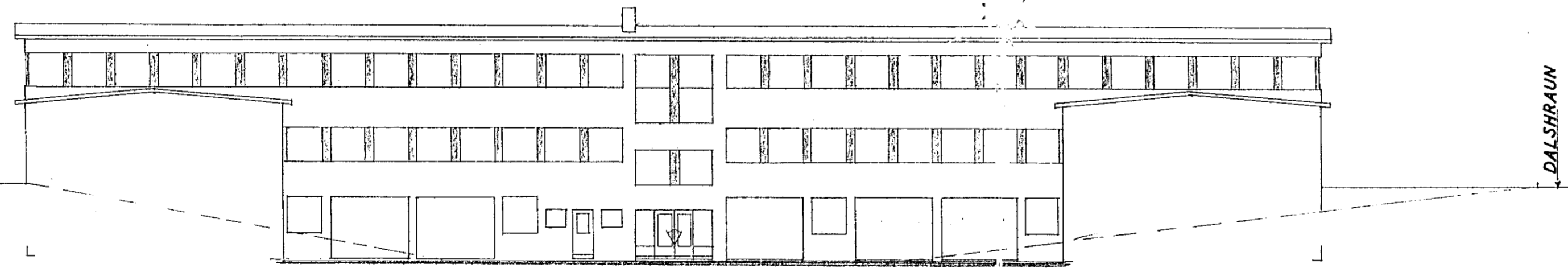
Suður - að STAKKAHRAUNI -



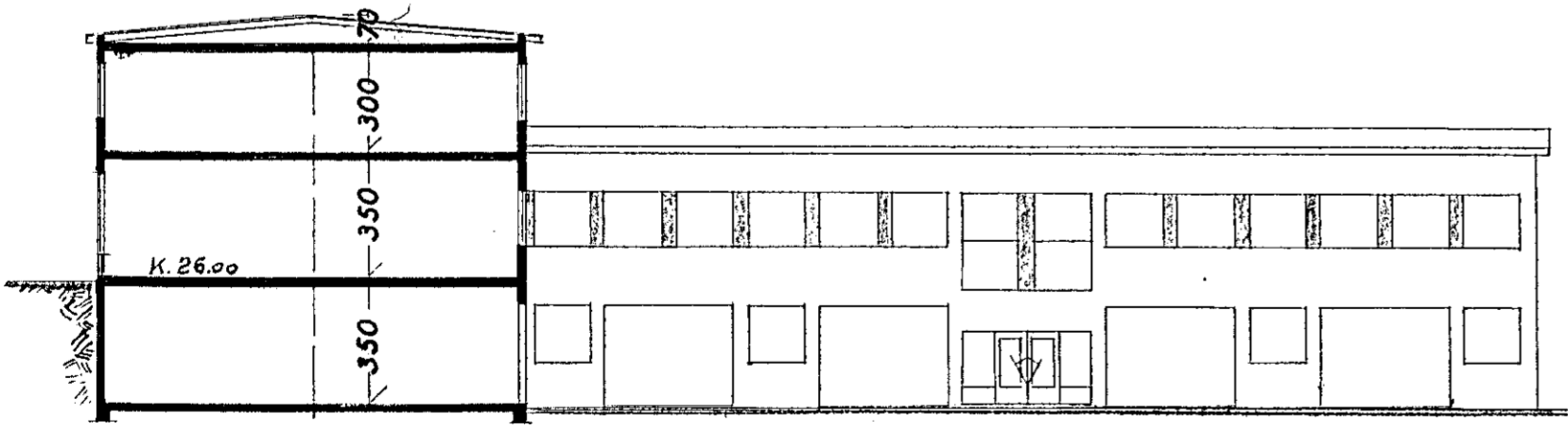
Vestur - að DALSHRAUNI -



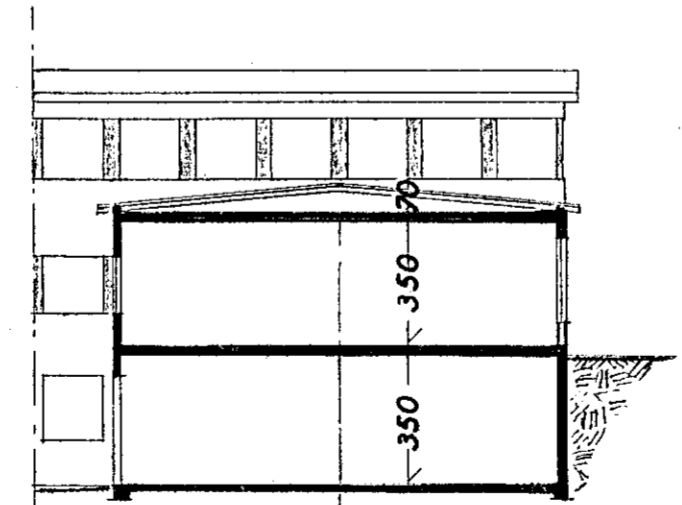
Austur - að REYKJANESBRAUT -



Norður



Snið



Snið

Samþykkt á fundi bygginga-
nefndar þ. 3. 4. 1968
BYGGINGAFLÆTRUINN
I HAFNARFIRDI
F. Sigurðsson

I. AFHANGI. skv. bláði 5 og 6

Sjá athugasemdir um framhalds-
byggingu í bókun bygginga-
nefndar.

DALSHRAUN NR 11

BLAD 1

Útlit } 1:200
Snið }

Hafnarfirði í maí 1968

F. Sigurðsson