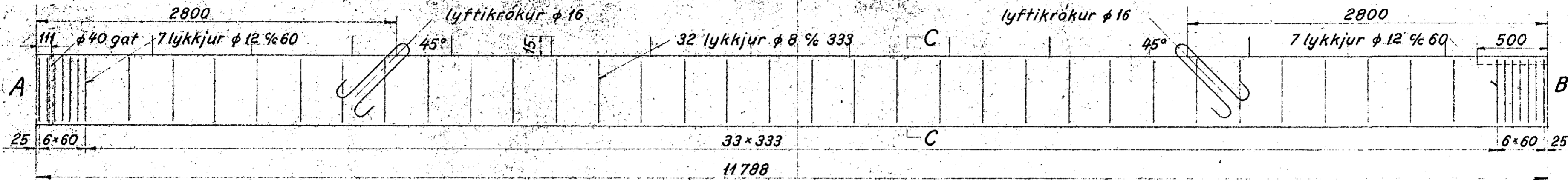
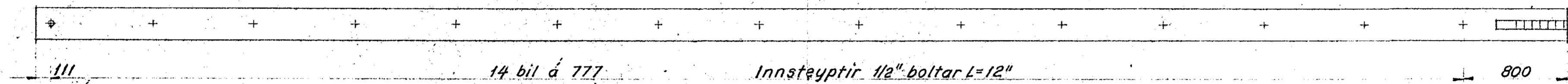


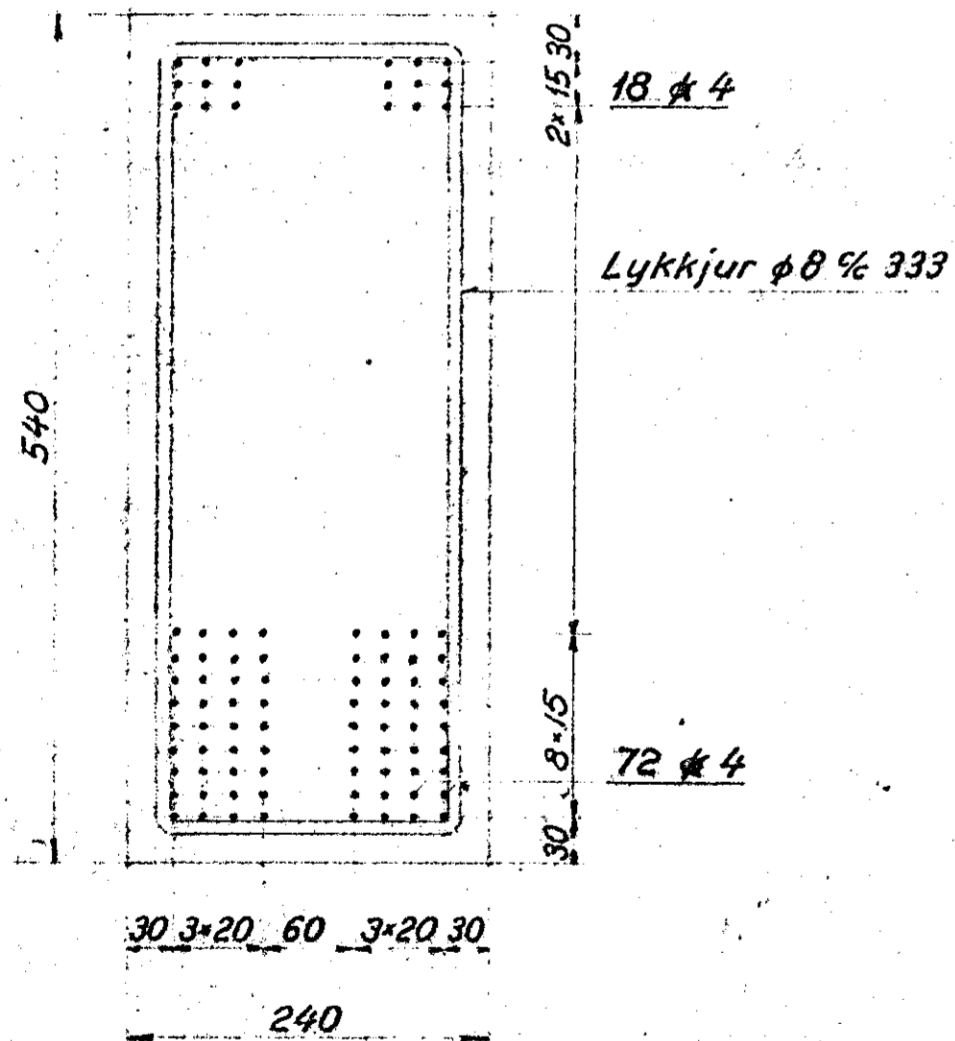
HLIÐARMYND 1:25



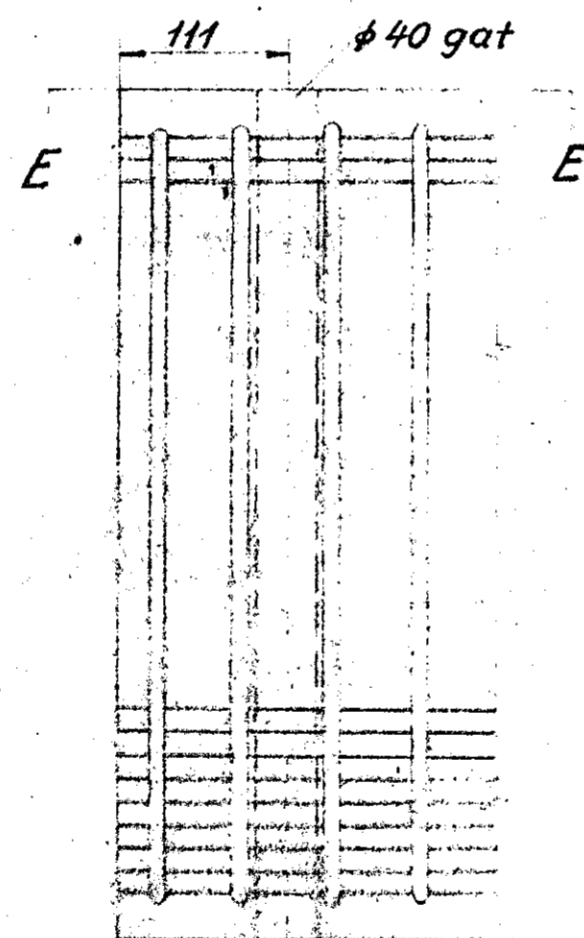
GRUNNMYND 1:25



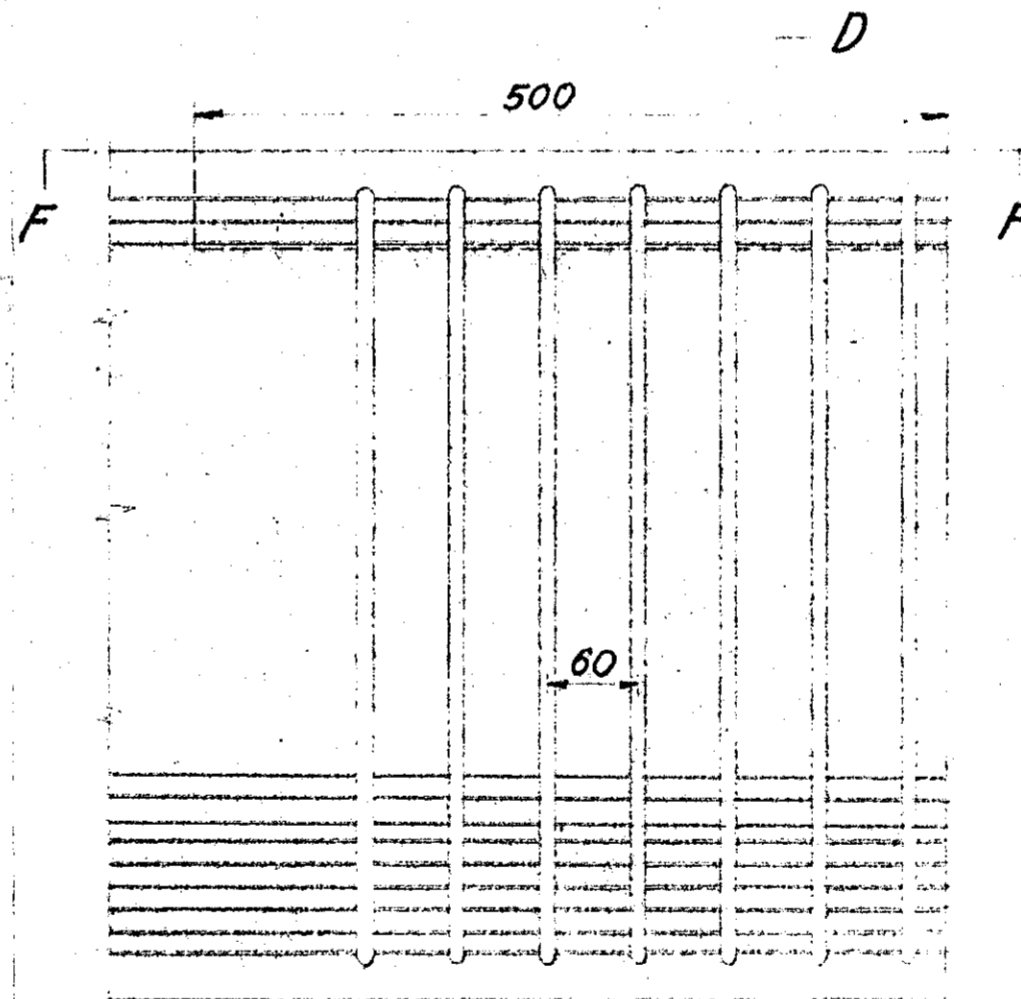
C-C 1:5



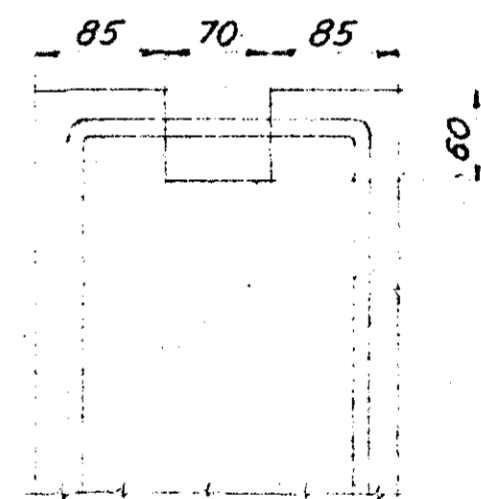
A 1:5



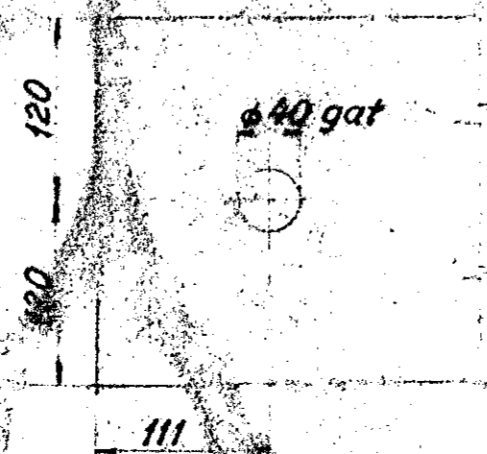
B 1:5



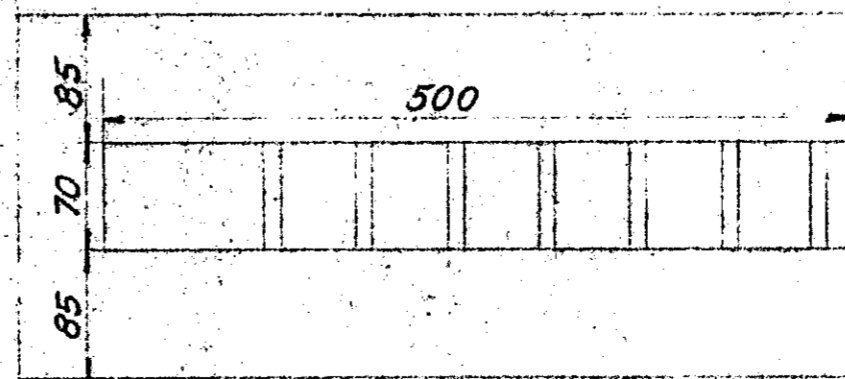
D-D 1:5



E-E 1:5



F-F 1:5



Auk eiginþunga og snjóþunga eru bitarnir reiknaðir fyrir 2,0t. þunga frá upphengdum kröna.

Steinsteypa: meðal-teningaból: $\sigma_f = 600 \text{ kg/sm}^2$, $v = 8\%$
- dreifing 67.5 -
* táknar stál 170/150, sporvalsaðir strengir
φ - 37
Forspenna: upphafleg: 12500 kg/sm^2 (1575 kg/streng)
endanleg: 10500 -
þungi bita 3,8t
Önefnd mál eru í mm

VELSMÍÐJA við KEFLAVÍKURVEG
ÞAKBITAR ÚR STRENGJASTEYPU

Dags. 5-12-60 Teikn. A. A. Ath. Nr. 2060-2

Stefán Ólafsson Byggingaverkfræðingar
Helgi H. Arnason Brautarholt 20. Sími 22231