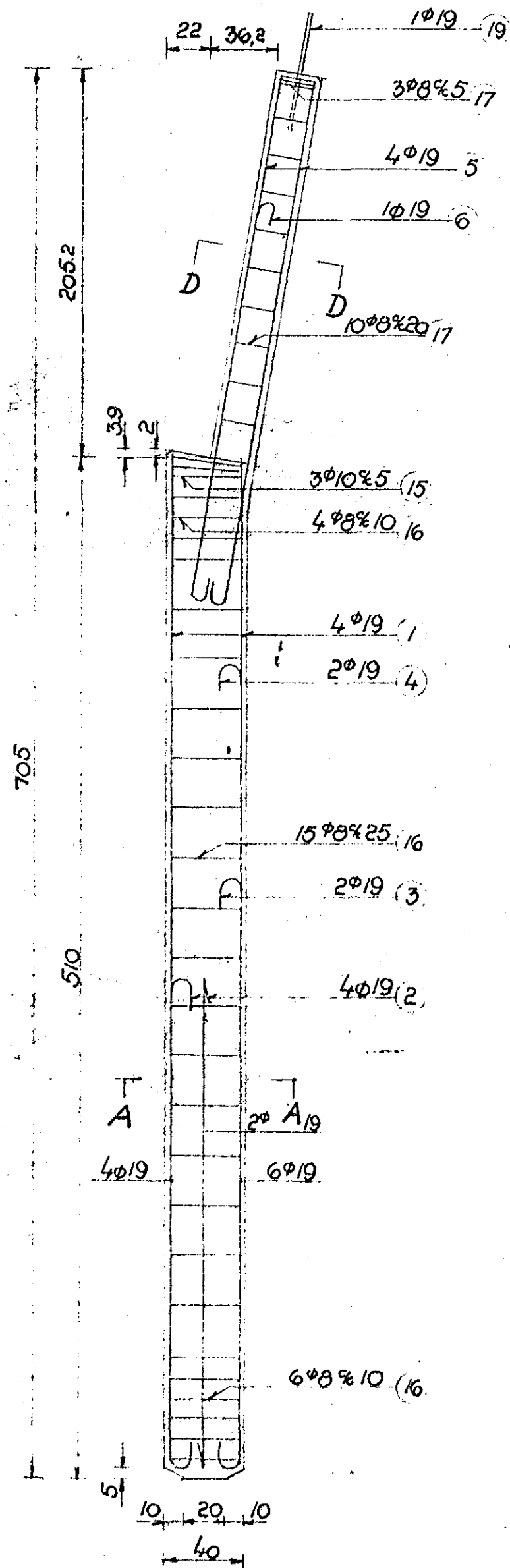
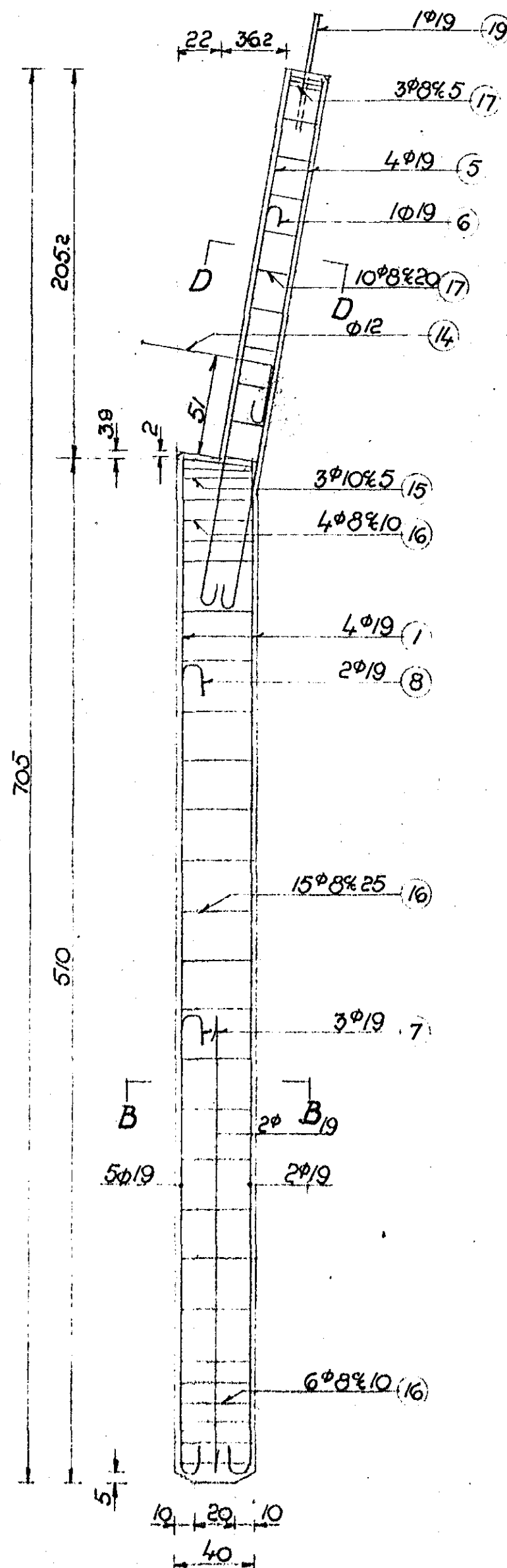


STODIR S₁ 1:25

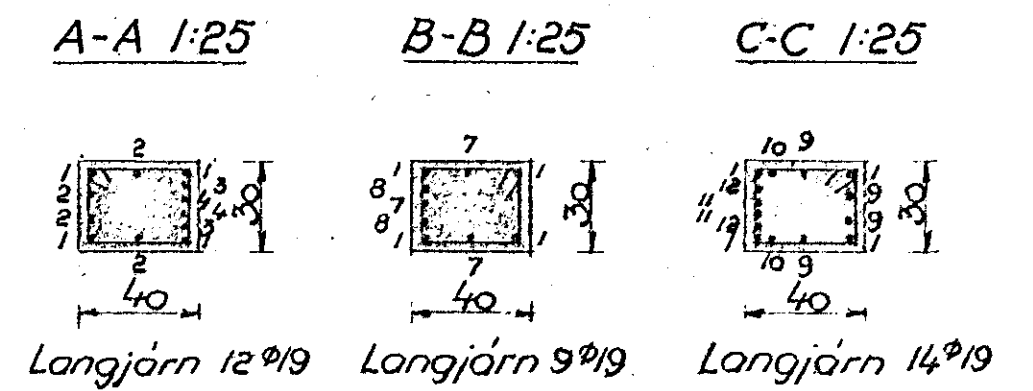
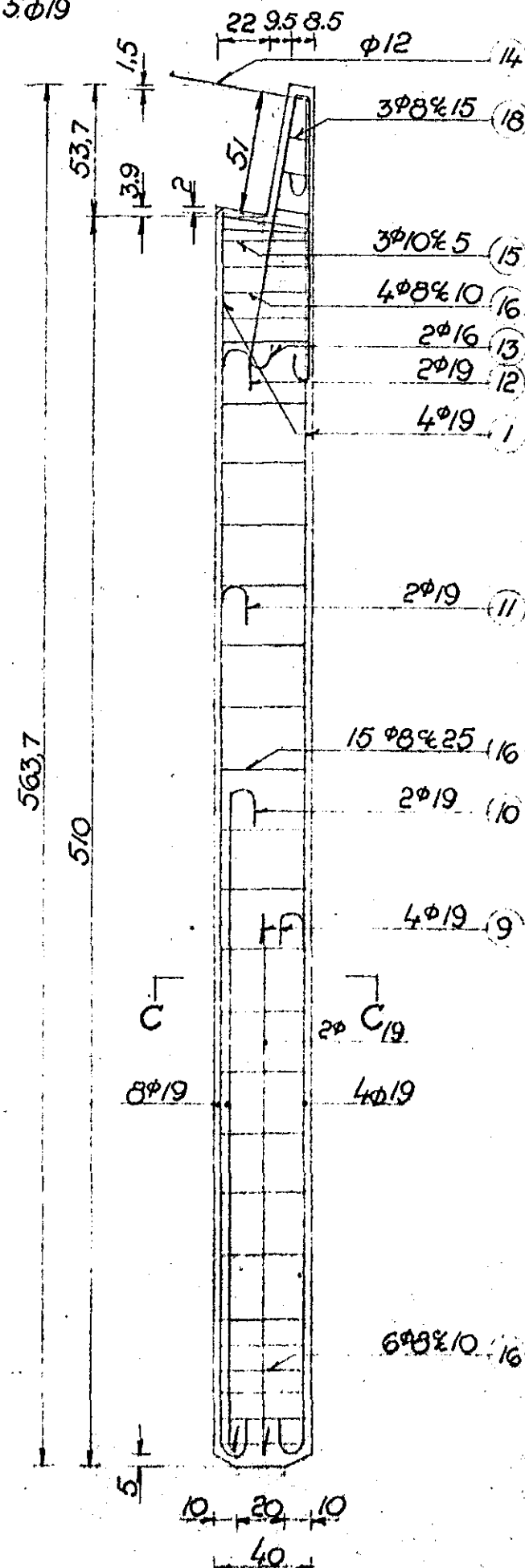


STODIR S₂ 1:25



STODIR S₃ 1:25

D-D 1:25



Steypu gæði: $\sigma_{T28} \approx 300 \text{ kg/sm}^2$

Efnismagn:	m ³ steypa/stk	þungi t/stk
S ₁ :	0,74	1,92
S ₂ :	0,74	1,92
S ₃ :	0,63	1,64

Göt, boltar og úrtök vegna uppsetningar og tengingar við aðra byggingarhluta eru ekki sýnd.

*Öll ónefnd mál eru sm.

Ath. S₂ eru innstodir ef reist eru fleiri en eitt skip í senn.

VÆLSMÍÐJA við KEFLAVÍKURVEG

Stodir S₁, S₂ og S₃

Telku.	SÓ.	Nr. 2060	- 3				
Ath.		Dags	25 - 7	1960			
STEFAN ÓLAFSSON · HELGI H. ARNASON BYGGINGARVERKFRÆÐINGAR · Brautaholti 20 · Sími 22231							