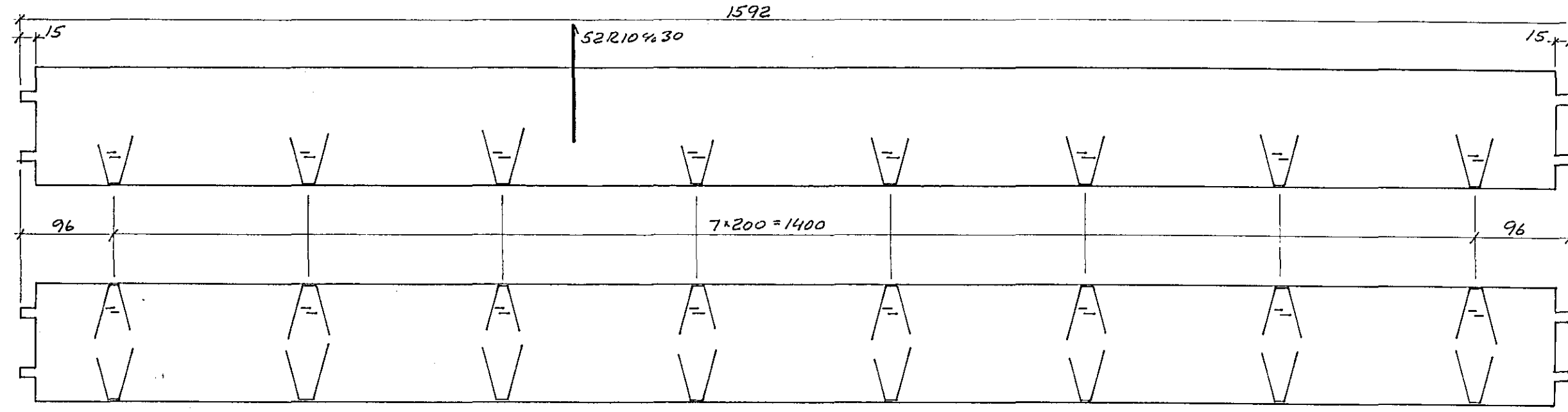


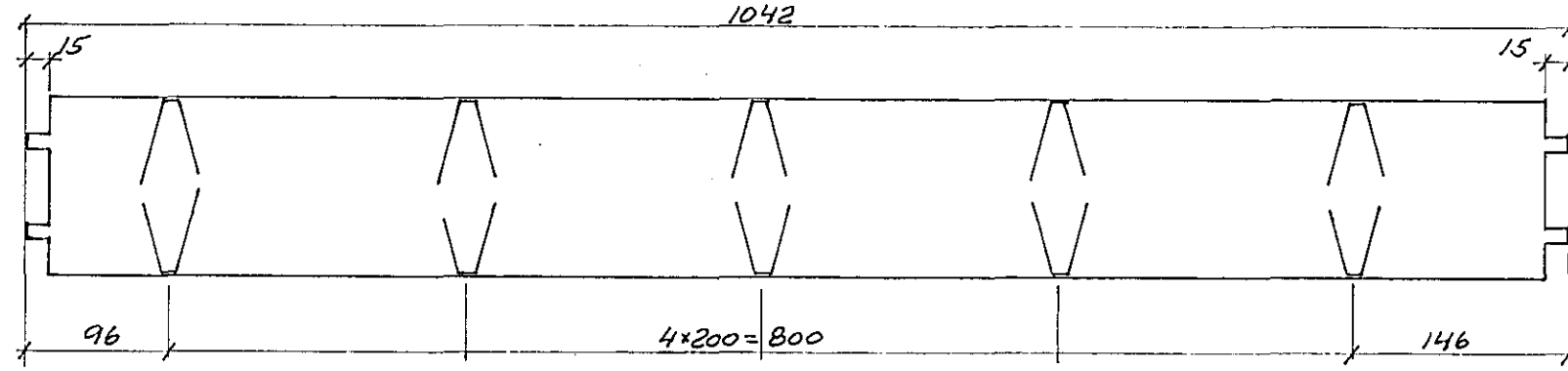
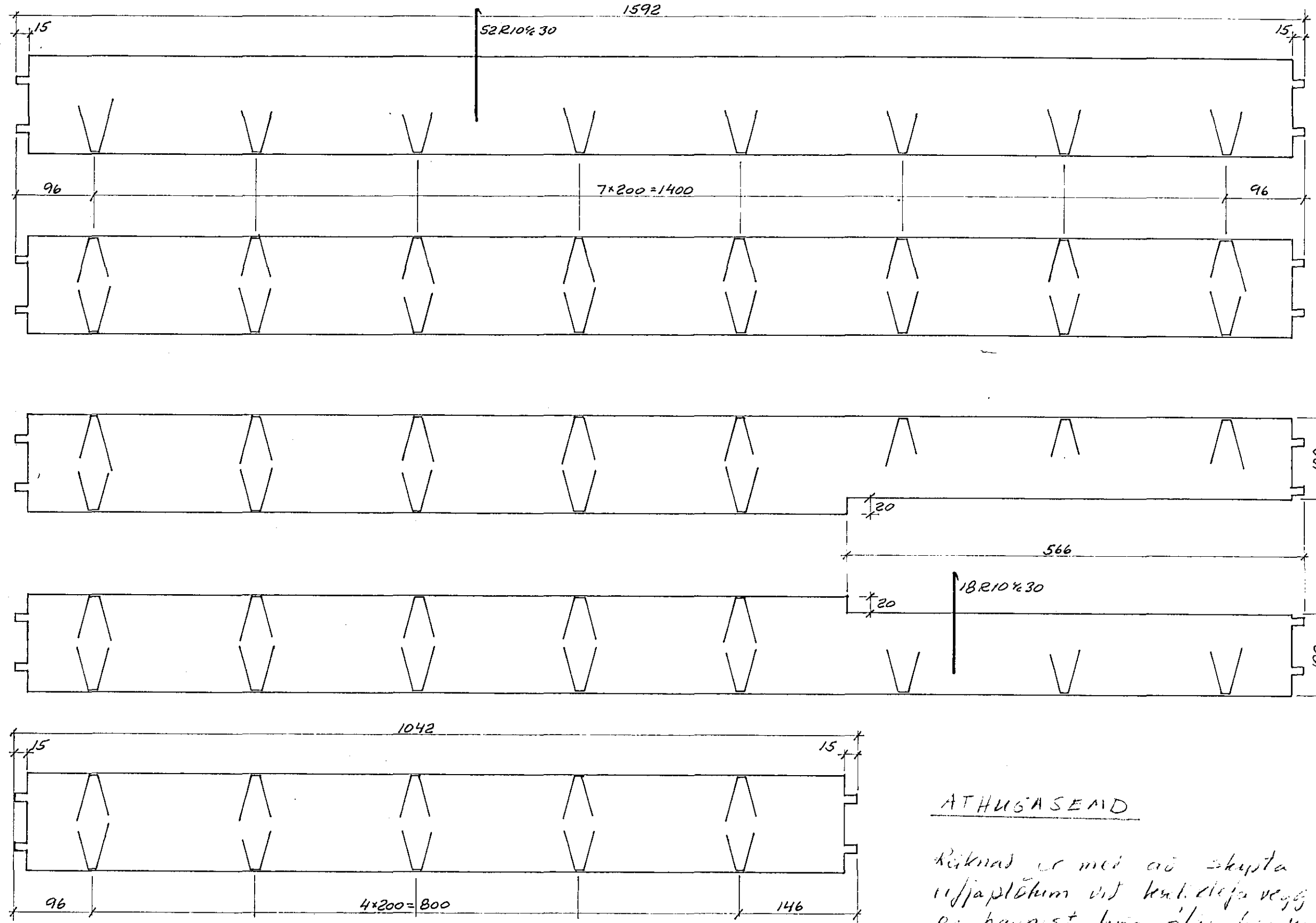
PAKPLÖTUR RP42/120

ÁLAG: 200 K/P/M<sup>2</sup>



GÓLFPLÖTUR RP54/120

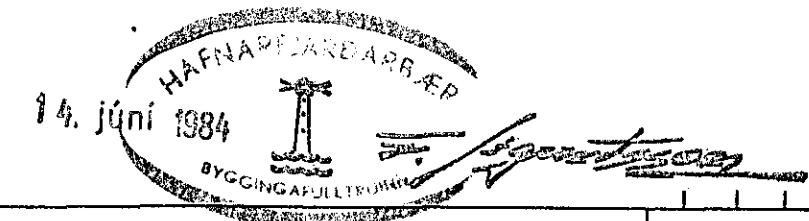
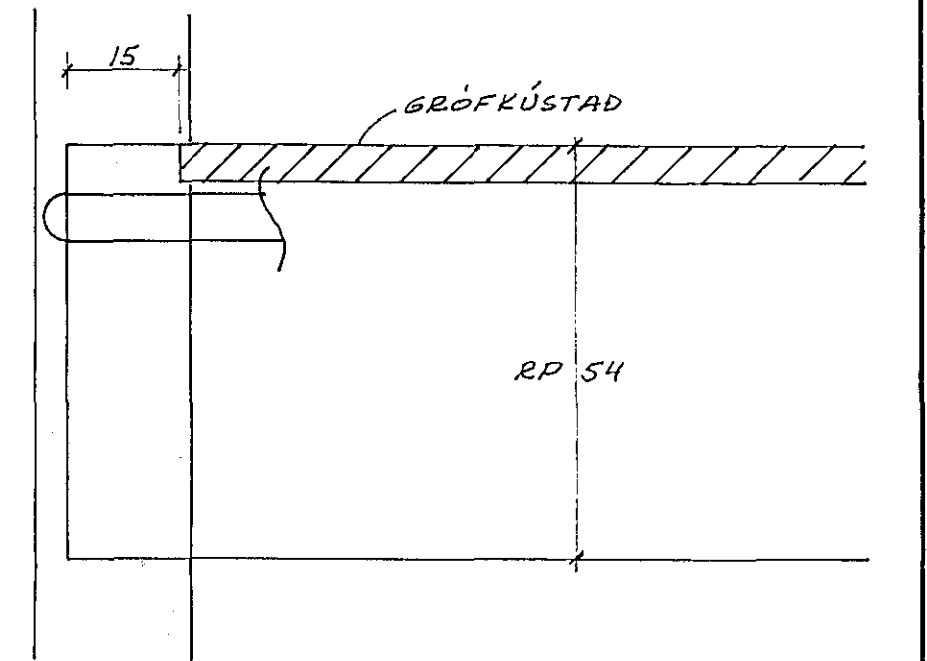
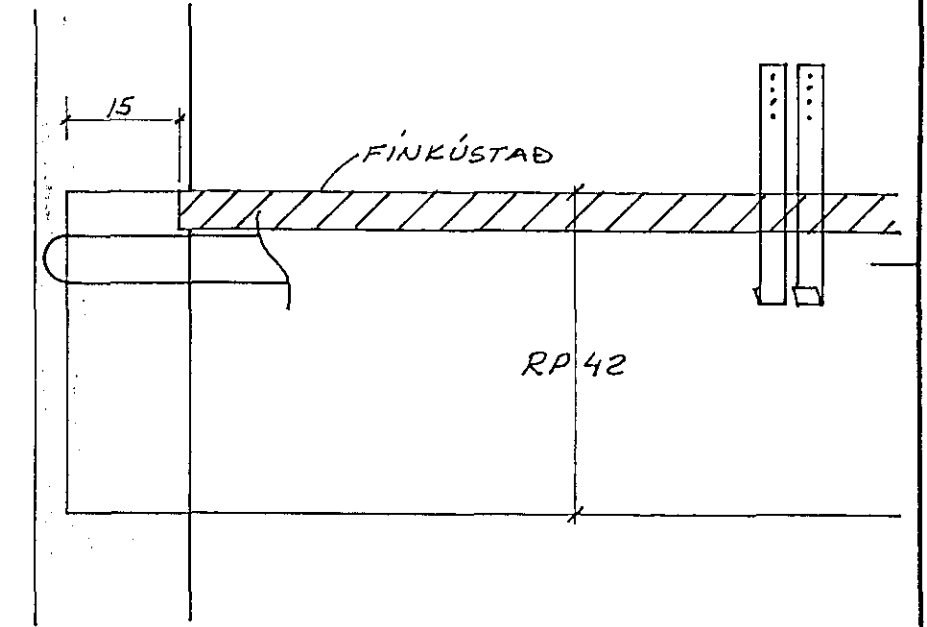
ÁLAG: ÁSTEYPUÁLAG + 400 K/P/M<sup>2</sup>



ATHUGASEMD

Réttind er með að skipta rifjaplötum við kant. hléja vegg og hannaist fyrir álag 60 kg/m<sup>2</sup>

N.R.	GERÐ	FJÖLDI
A	RP42/120	2
B	RP42/120	19
C	RP42/120	2
D	RP42/120	13
E	RP54/120	1
F	RP54/120	1
G	RP54/120	4



REIKN. SGS	SVEINN G. SVEINSSON	LAUGAVEGUR 40	BR.
TEIKN. RVK I	BYGGINGARVERKFR. FVFI	SÍMI 26389	VERK NR.
14. júní 1984	Dalshraun 7		MÆLIKV. 1:50:10
	rifjaplötur í milligólf og þaki		TEIKN. NR. 19