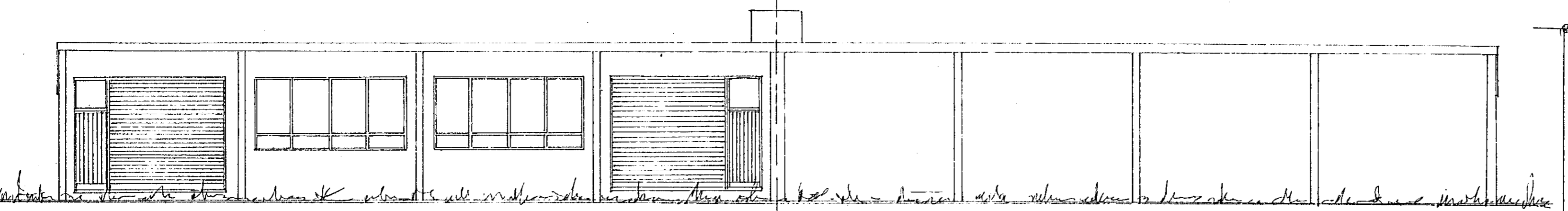
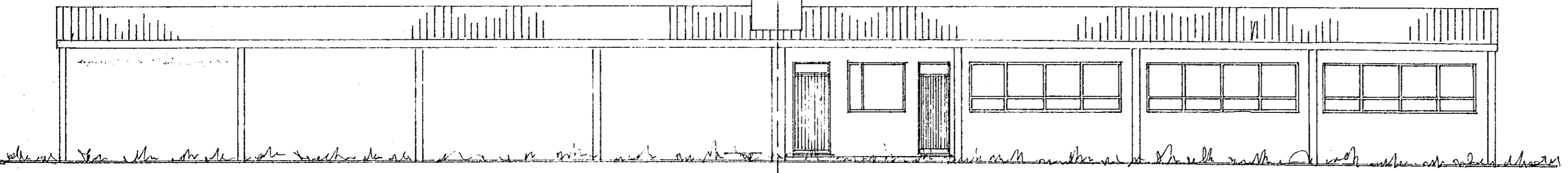


Samþykkt á fundi bygginga-
nefndar þ. 17. 5. 1972

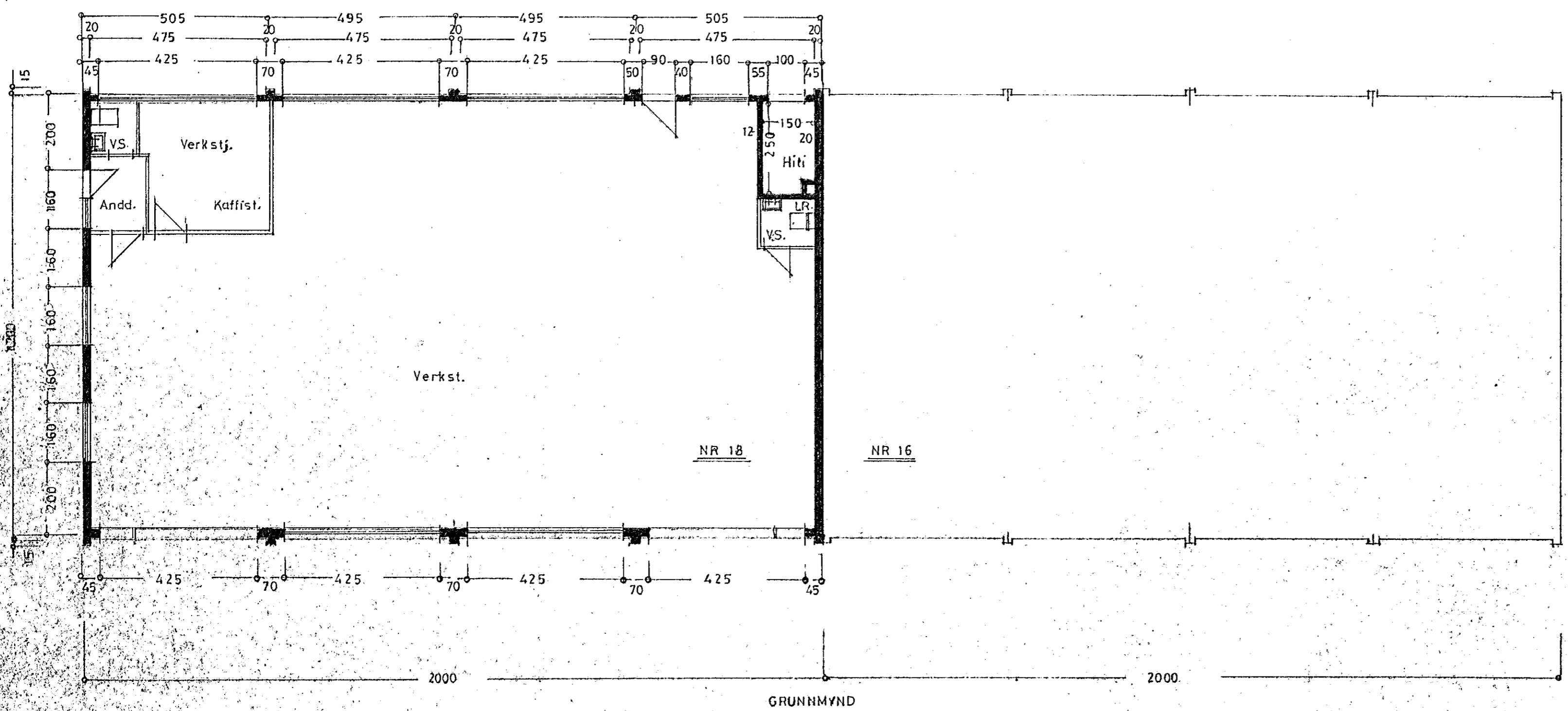
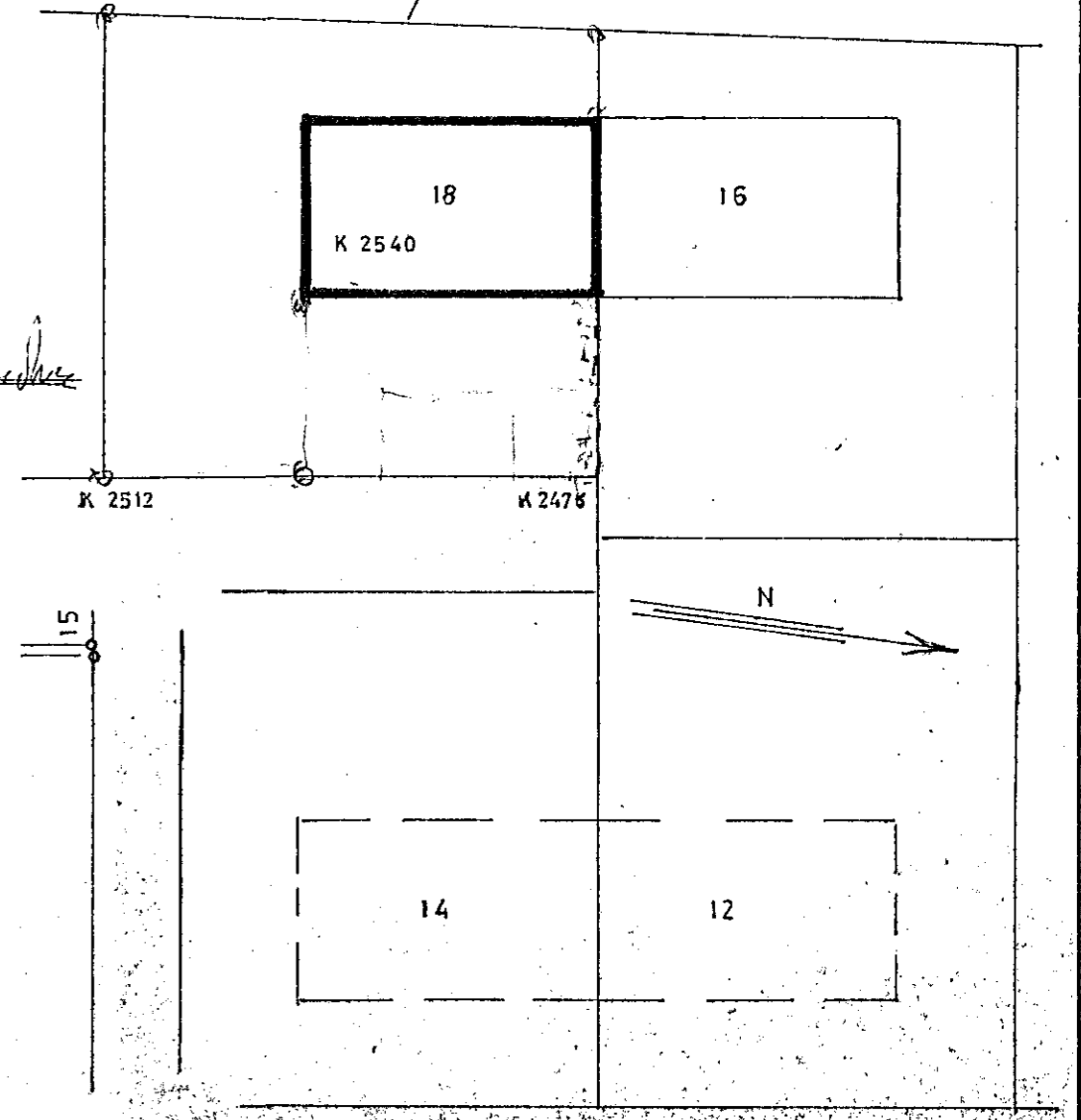
BYGGINGAFULLTRÚINN
I HAFNARFIRÐI

F. Sigurðsson

1/578 Samþ. gólfplakuum
rúm 4/5 cm.



AFSTÖÐUMYND
1:500



DALSHRAUN

STÆRD:
LÖÐ 999,2 m²
HÚS 240,0 m², 871,0 m³

DALSHRAUN NR.18

ÚTLIT } 1:100
GRUNNMYND }
SNID }

AFSTÖÐUMYND 1:500

Hafnarfirði í maí 1972

F. Sigurðsson