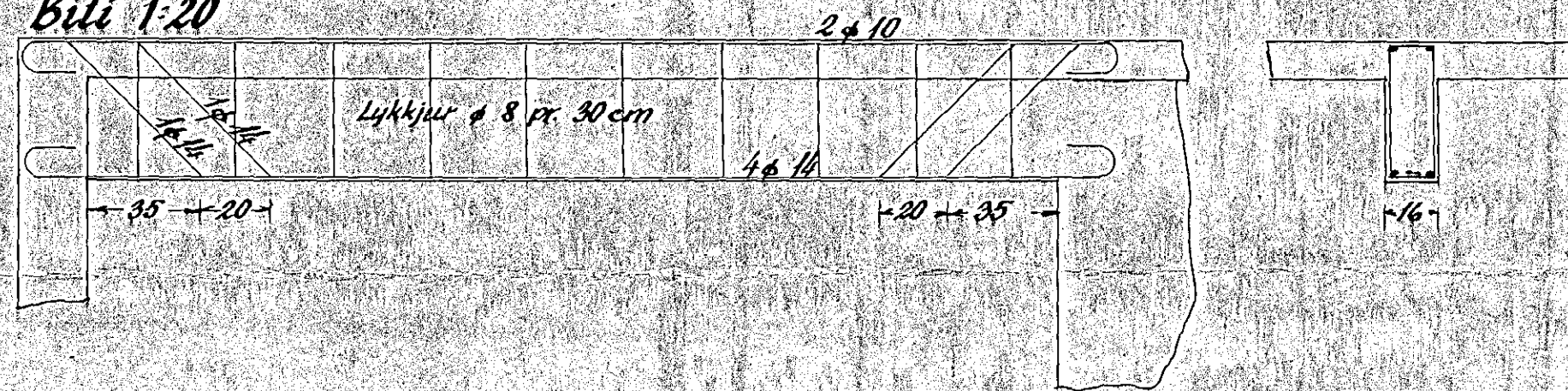
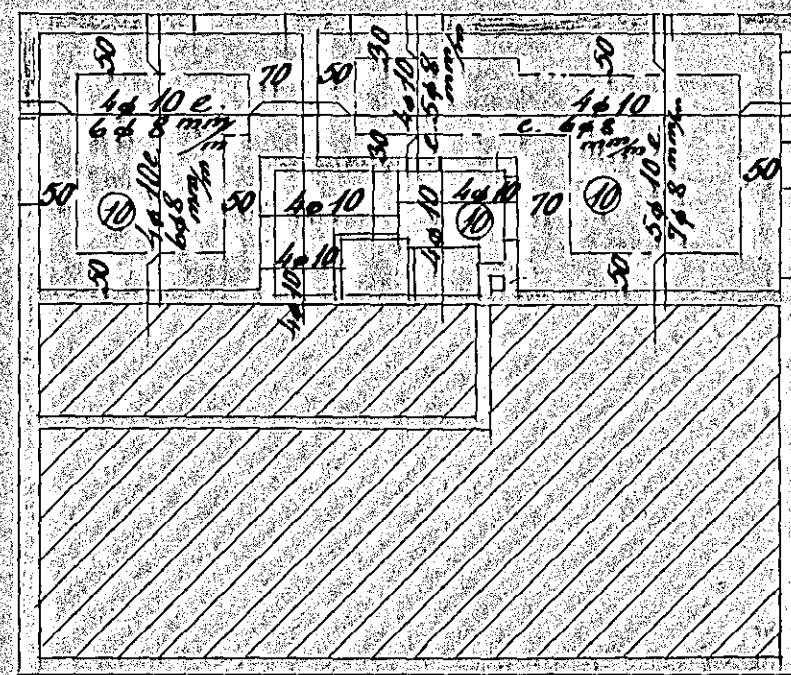


Bili 1:20

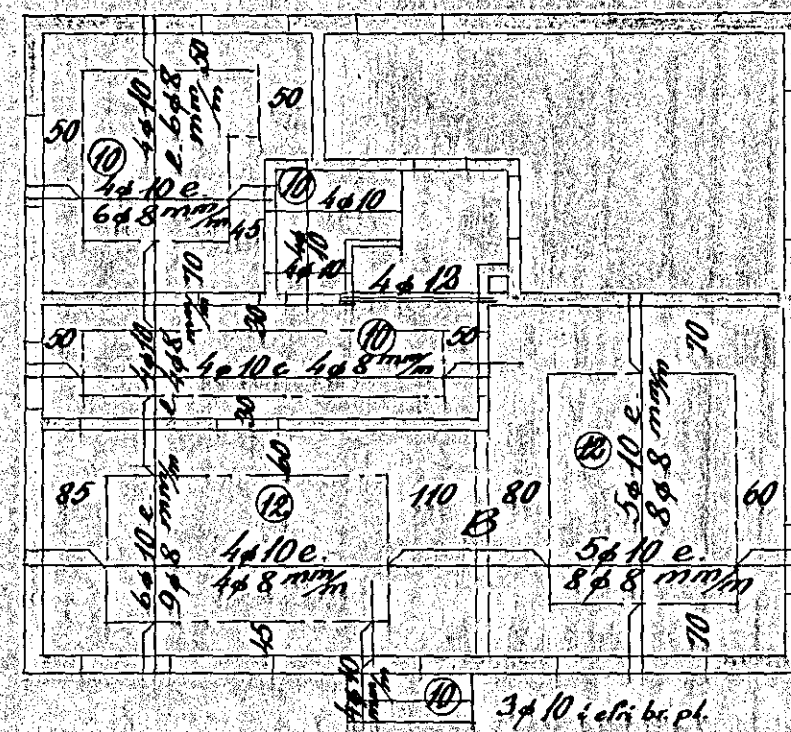


Blöndun steypu 1:2:3

Yfir dyr og glugga korni 2 φ 10, nema haf ≥ 2.0 m, þá korni 4 φ 10



Loft yfir kjallara 1:100



Loft yfir hæð 1:100

Hafnarf. í nóv. '54

Eg. J. Ólafsson