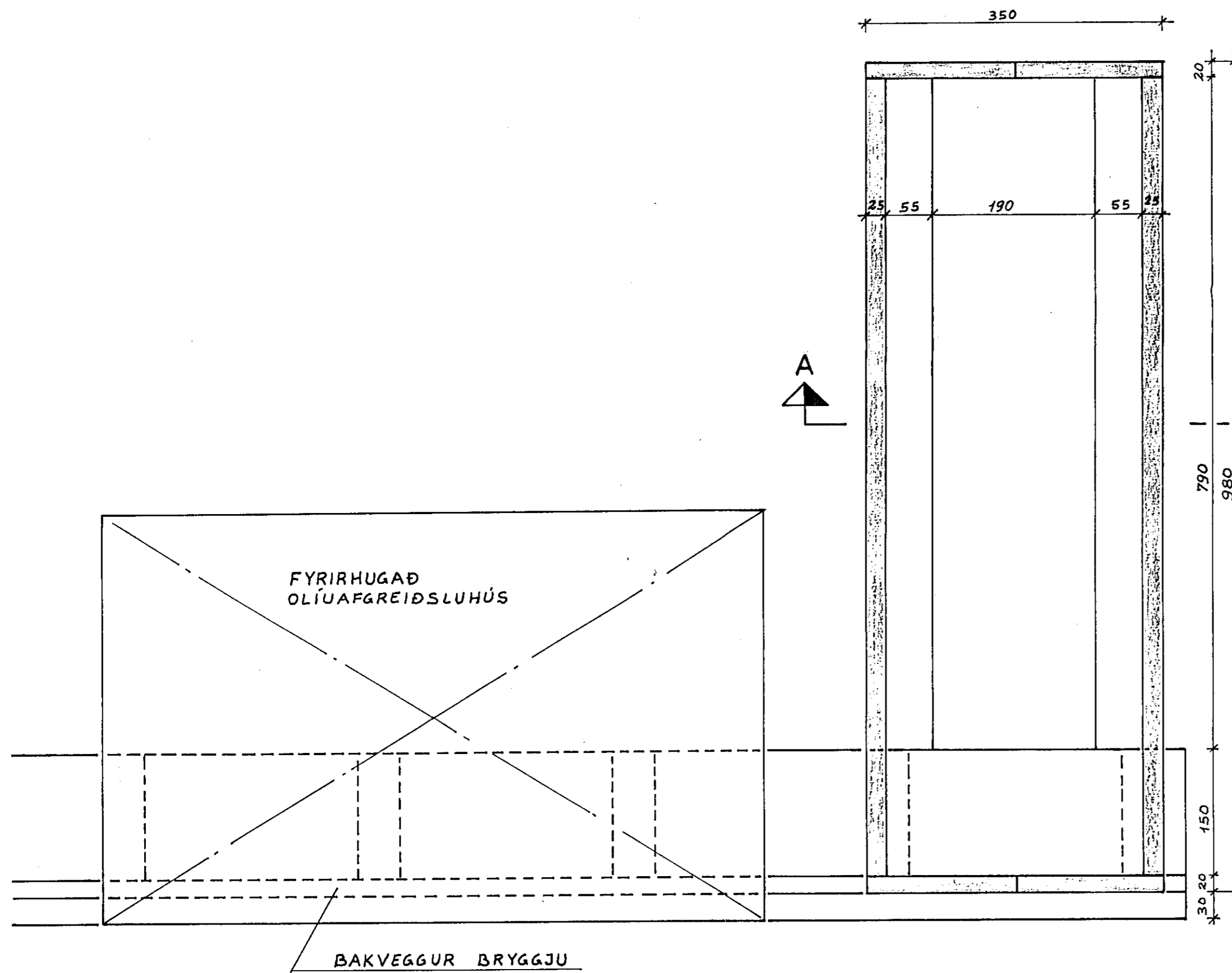
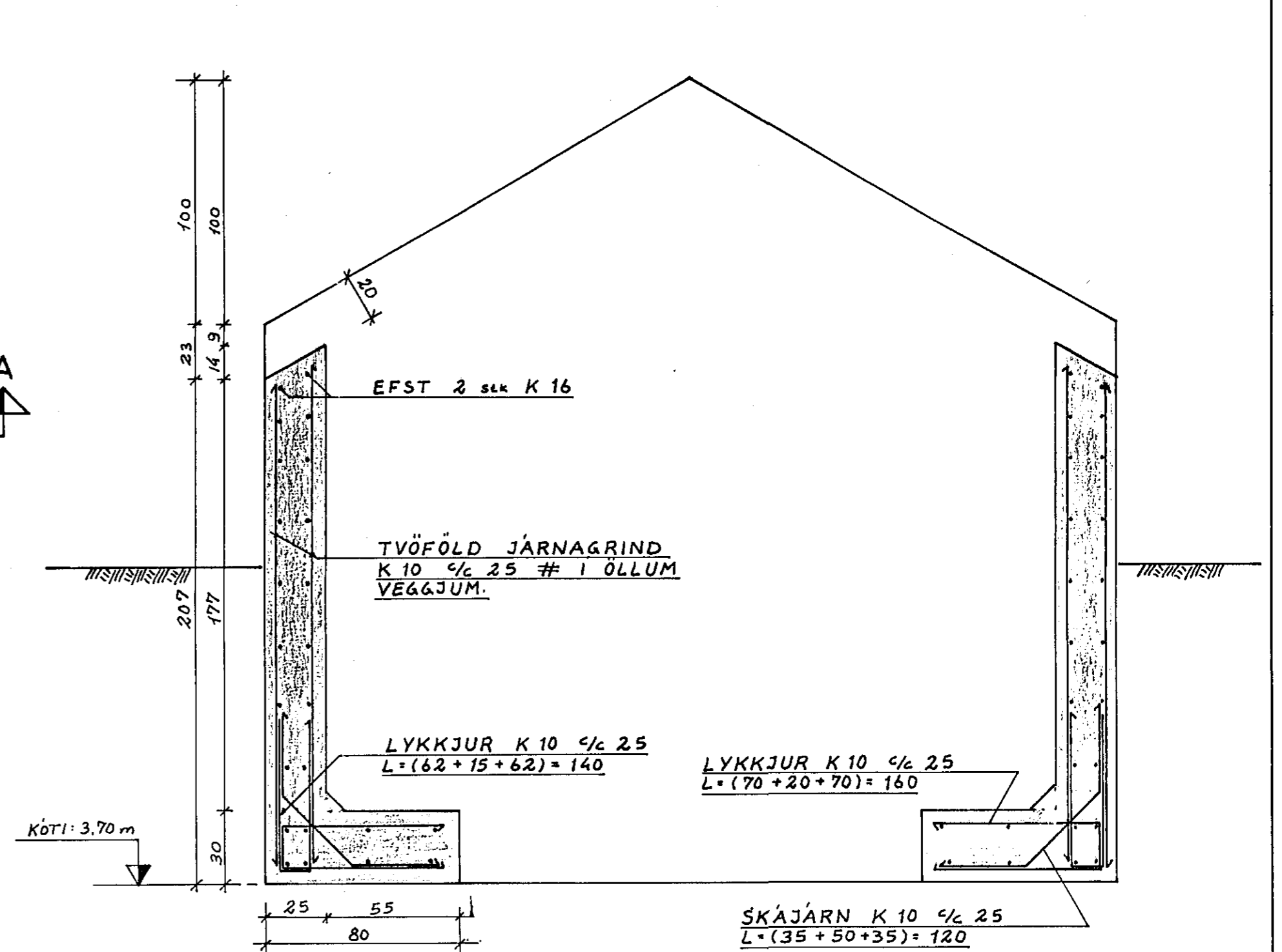


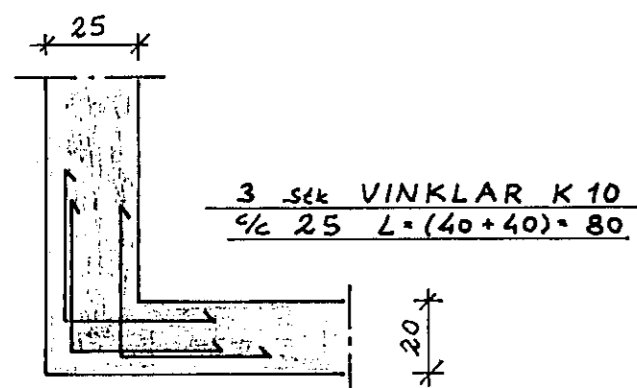
GRUNNMYND 1:50



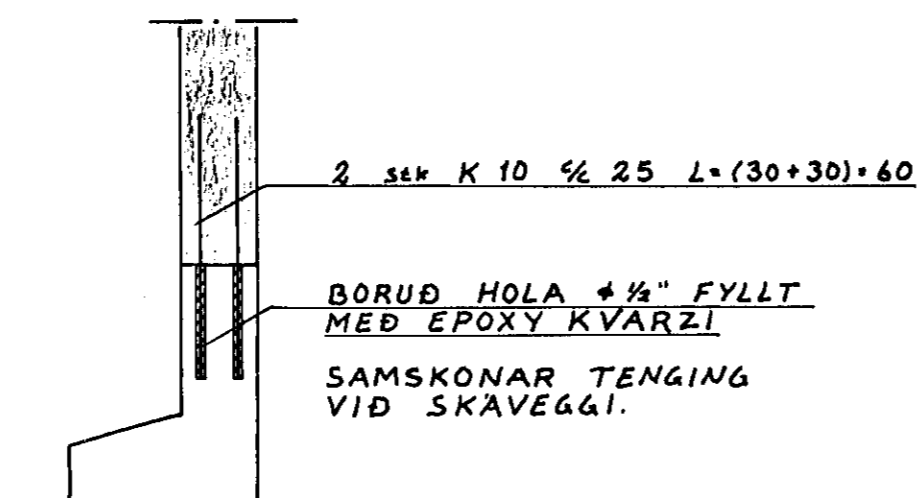
SNIÐ A-A 1:20



AUKAJÁRN Í HORNUM 1:20



TENING GAMALLA OG NYRRA VEGGJA 1:20

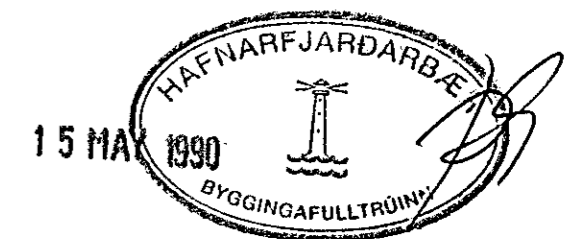


SKÝRINGAR:

STEYPA : SEMENT 400 kg/m³, V/S 0,4-0,5, LOFT 6% ± 0,5%, SIGMAL 5-8 cm.

JARN : ÖLL JÄRN ERU KAMBSTÁL Ks 40 S. SKEYTI LENGD 40 + ±. ÁSTEYPULAG JARNA min. 5 cm.

UNDIRSTÖÐUR KOMI Á VEL ÞJAPPADA GRÚS. MÁLSETNING 1 cm.



F-1

VERKFRÆÐISTOFA		HALLDÓRS HANNESSONAR S. 91-54355 SUÐURGÖTU 14 - 220 HAFNARFJÓRÐUR	
SKELJUNGUR h/f (Fornubúðir 14 Haf.)		Mkv: 1:50 1:20	
UNDIRSTÖÐUR OG VEGGIR KRINGUM GASOLÍUTANK.		Reiknað: VB, HH	
		Teiknað: <i>Sibin B</i>	
		Yfirfarið: <i>d.v.</i>	
Verk:	Blað nr. 1.1	Dags: Maí '90	