

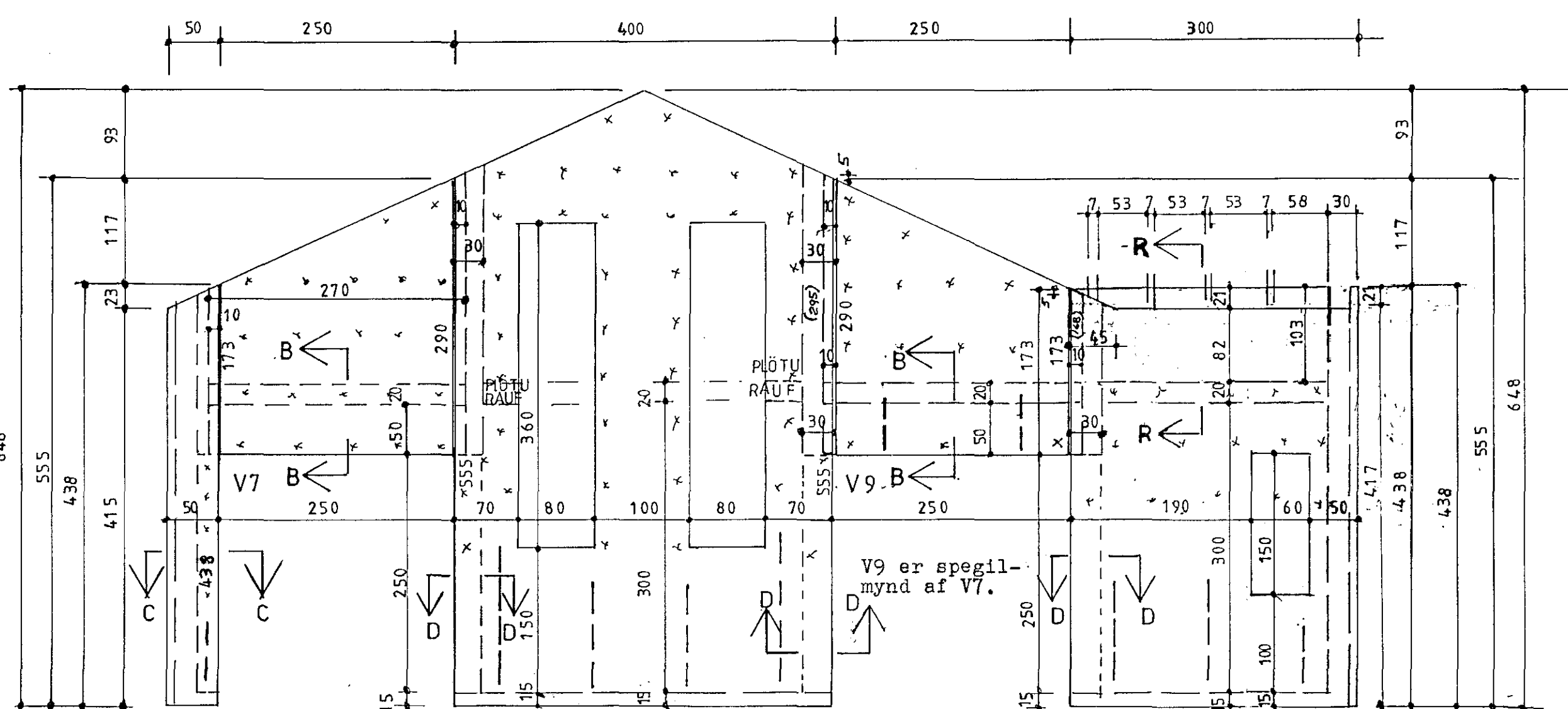
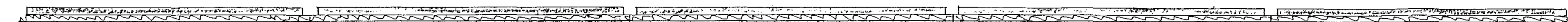
V1 F= 20.53 m²
 I= 9700 kg
 St= 3.88 m³

V2 F= 21.8 m²
 I= 9100 kg
 St= 3.64 m³

V3 F= 21.8 m²
 I= 9100 kg
 St= 3.64 m³

V4 F= 21.8 m²
 I= 9100 kg
 St= 3.64 m³

V5 F= 21.53 m²
 I= 9700 kg
 St= 3.88 m³



V6 F= 2.2 m²
 I= 800 kg

V7 F= 6.24 m²
 I= 3050 kg
 St= 1.22 m³

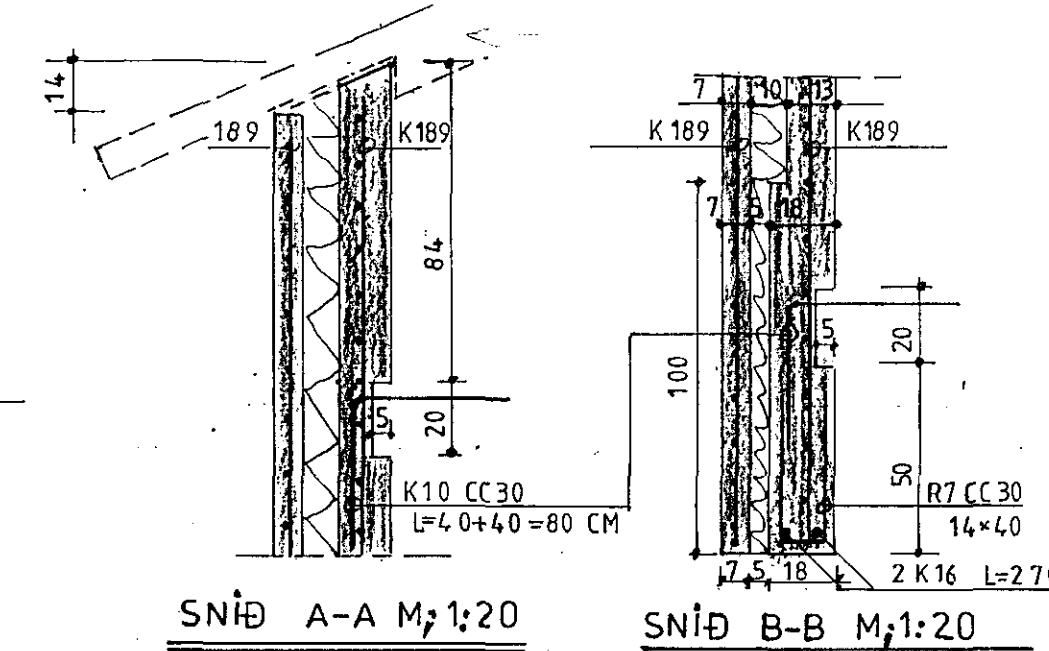
V8 F= 24.06 m²
 I= 8550 kg
 St= 3.42 m³

V9 F= 6.24 m²
 I= 3050 kg
 St= 1.22 m³

V10 F= 13.14 m²
 I= 5250 kg
 St= 2.1 m³

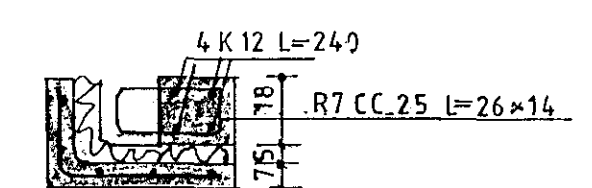
V11 F= 15.51 m²
 V18 I= 5900 kg
 St= 2.36 m³

V9 er spegilmynd af V7.

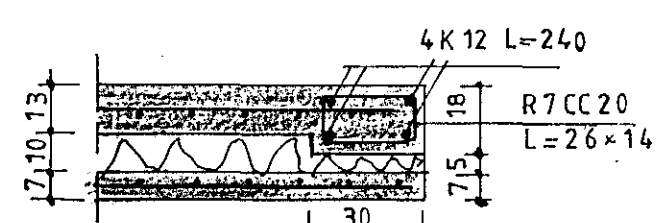


SNÍÐ A-A M₁:1:20

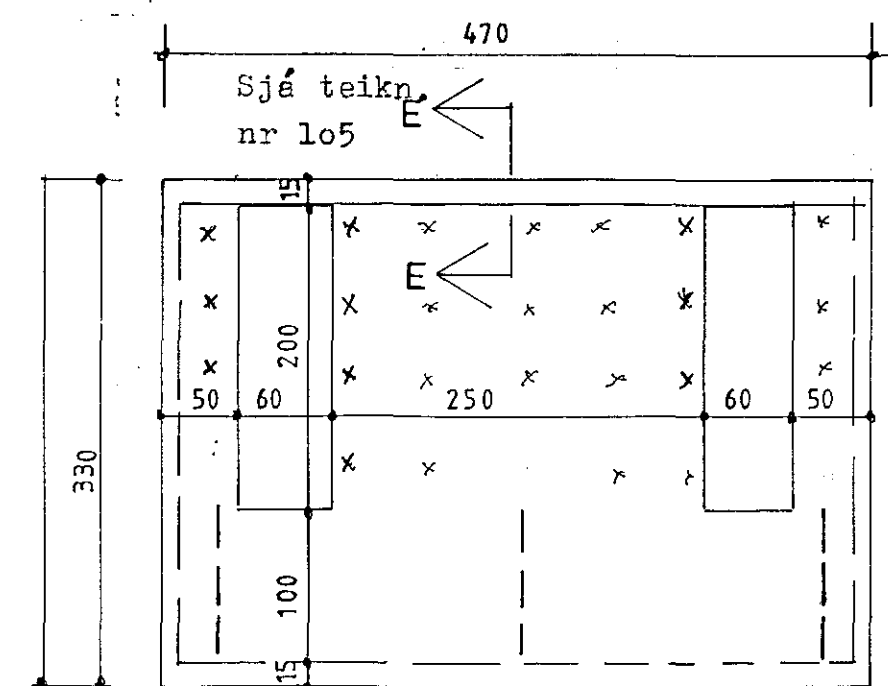
SNÍÐ B-B M₁:1:20



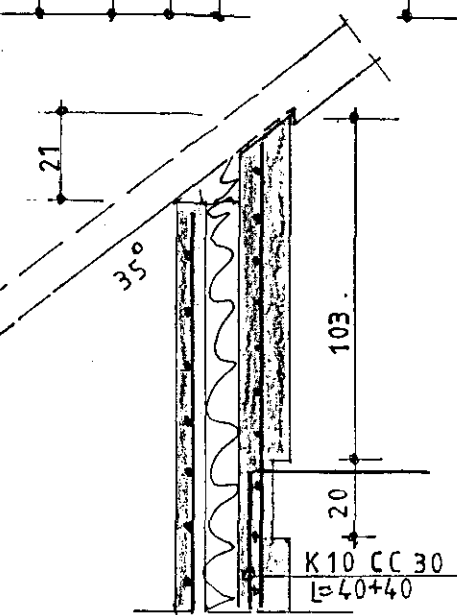
SNÍÐ C-C M₁:1:20



SNÍÐ D-D M₁:1:20



V11 F= 15.51 m²
 V18 I= 5900 kg
 St= 2.36 m³



SNÍÐ R-R M₁:1:20

Skýringar:
 Steypa : Nota skal S250 steypu minnst 300 kg/m³ af sementi í ytra byrði.

Járnþending er hefðbundin einingajárnþending og er sýnt á sniðum.



VERKHÖNNUN
 VERKFRÆÐI- OG TEIKNISTOFA

ÁRMÚLA 21 REYKJAVÍK SÍMÍ 91-39900

Verk nr. 348 Teiknað:
 Teikn. nr. 104 Hannað:
 Mælikv.: 1:50 Samþykkt: Sveinn Þorgeirsson
 Dags. OKT 1990 Breytt:

Verkefni:
 VERBÚÐIR FLENSBORGARHÖFN HAFNARF

Heiti tekn.:
 UTVEGGJAEININGAR V1 V11