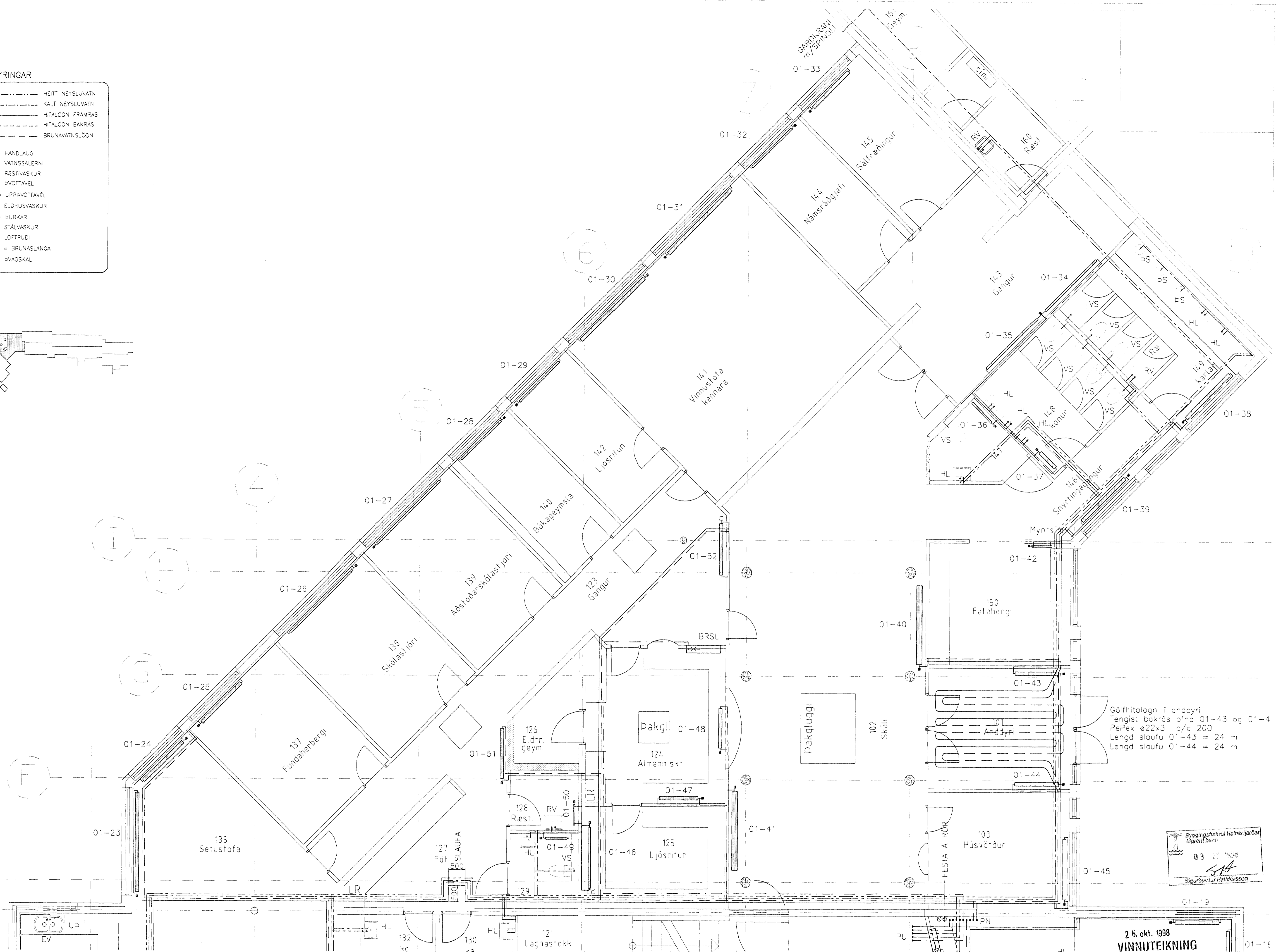
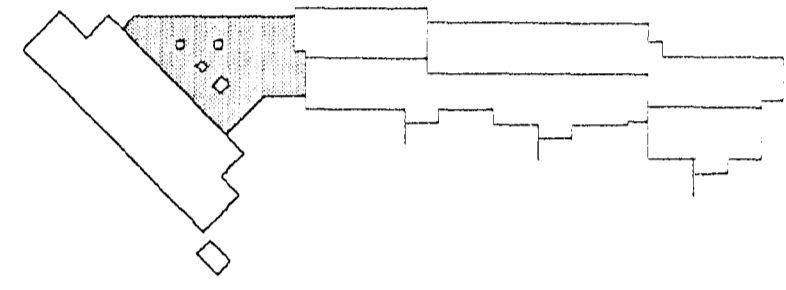


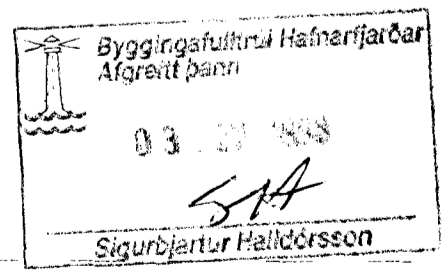
SKÝRINGAR

- HEITT NEYSLUVATN
- KALT NEYSLUVATN
- HITALÖGN FRAMRAS
- HITALÖGN BAKRAS
- BRUNAVATNSLÖGN

- HL = HANDLAUG
- VS = VATNSSALERN
- RV = RÆSTVASKUR
- ÞV = ÞVOTTAVÉL
- UP = UPPÞVOTTAVÉL
- EV = ELDHÚSVASKUR
- ÞU = ÞURKARI
- SV = STÁLVAÐSKUR
- LP = LOFTÞUDI
- BRSL = BRUNASLANGA
- ÞS = ÞVAGSKÁL



Gólfhitilögn í anddyri  
Tengist bakrás ofna 01-43 og 01-4  
PePex ø22x3 c/c 200  
Lengd sloufu 01-43 = 24 m  
Lengd sloufu 01-44 = 24 m



26. okt. 1998  
VINNUTEIKNING

<p><b>LAGNATÆKNI</b> HÖNNUNAR OG RÁÐGJAFARSTOFA HAMRABORG 12 200 KÓPAVOGUR Sími: 564 5252 Fax: 564 5251 Netfang: lagnatækni@island.is</p>		<p>EINSETNING ENGDALSSKÓLA - Viðbygging PIPUKERFI HITA- OG NEYSLUVATNSKERFI LAGNIR A 1. HÆÐ GRUNNÝND 3 AF 3</p>		<p>1:50 HBB/FSK HBB 188 188 Plötuáhrif Heið-ll</p>
<p>26. okt. 1998</p>		<p>070464-2849</p>		<p>P. 05</p>