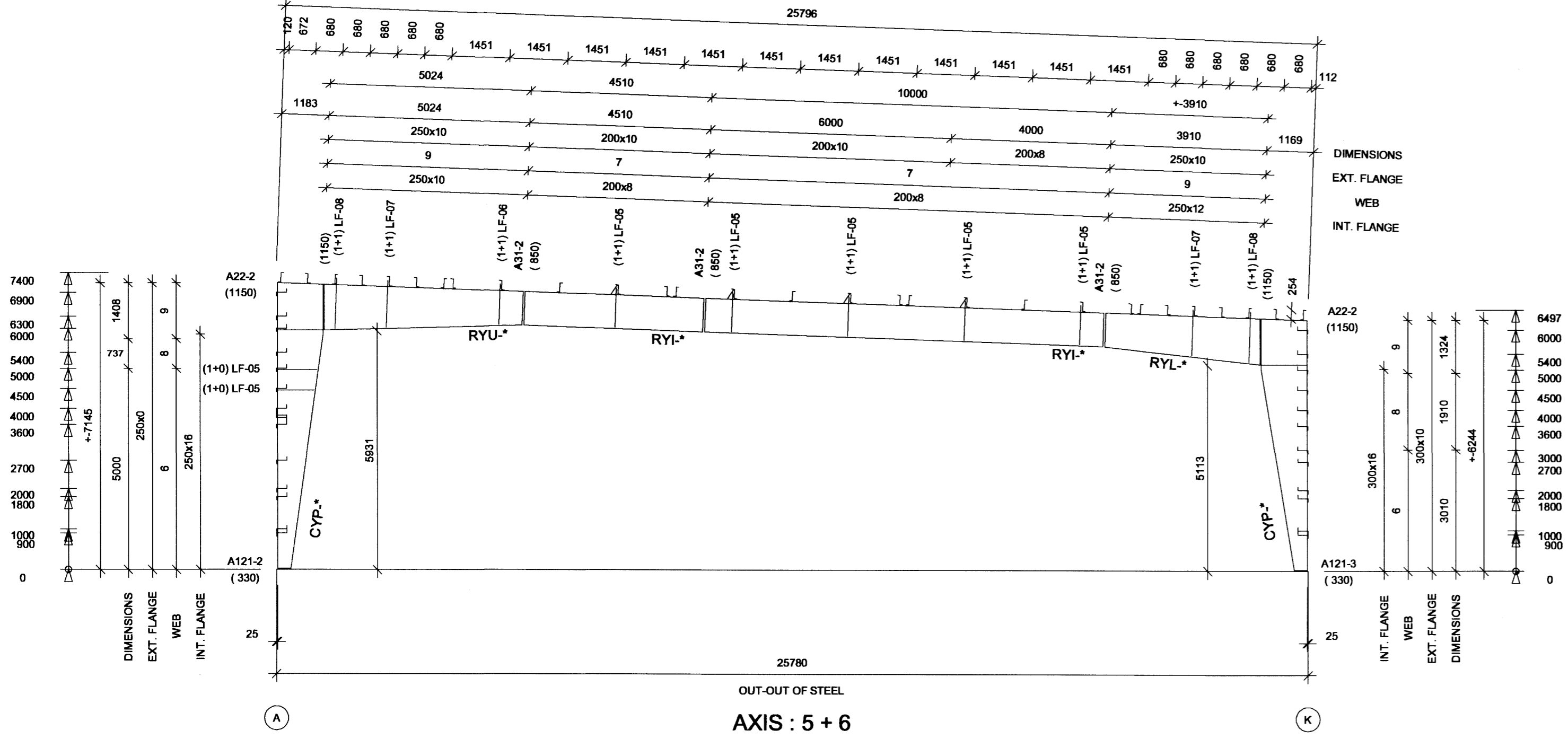
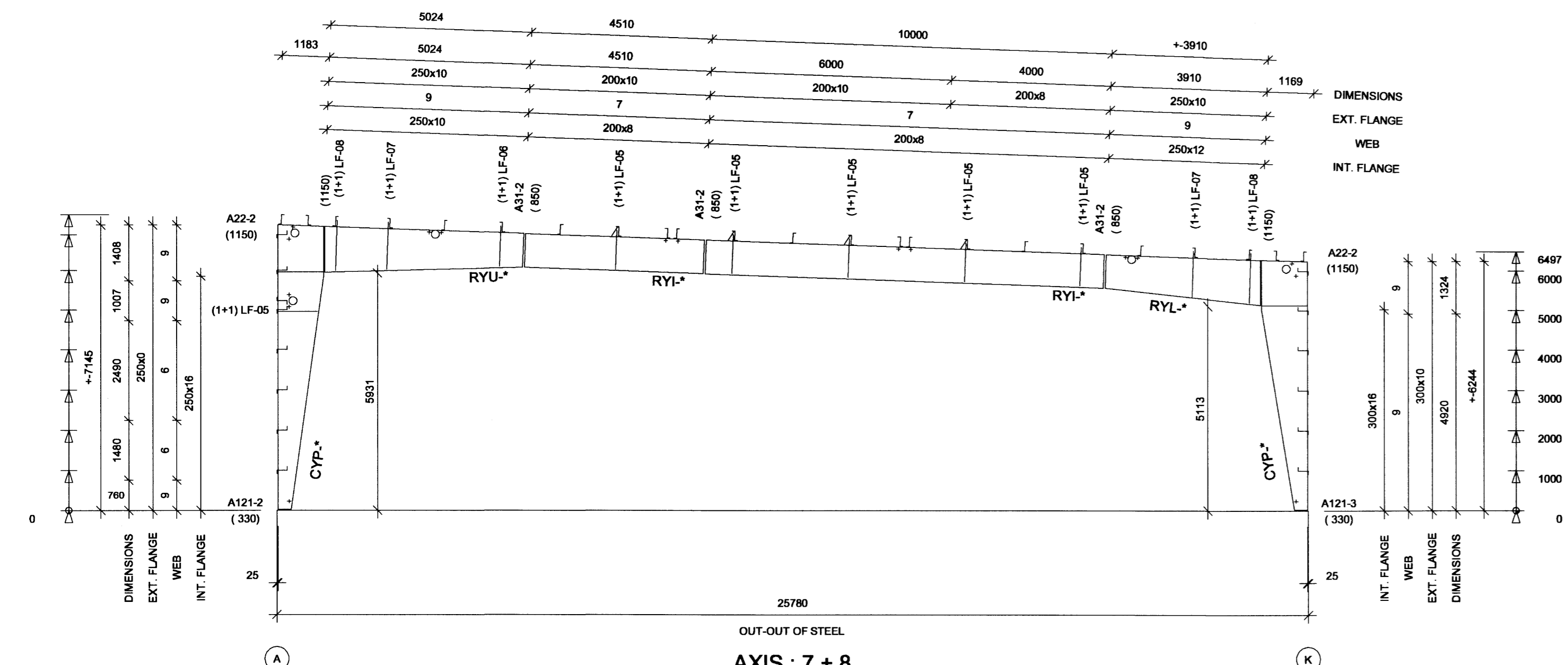


CONNECTION	BOLT	QTY
A22-2	BSK24085	24 - 4,2
A31-2	BSK29075	24 - 4,2

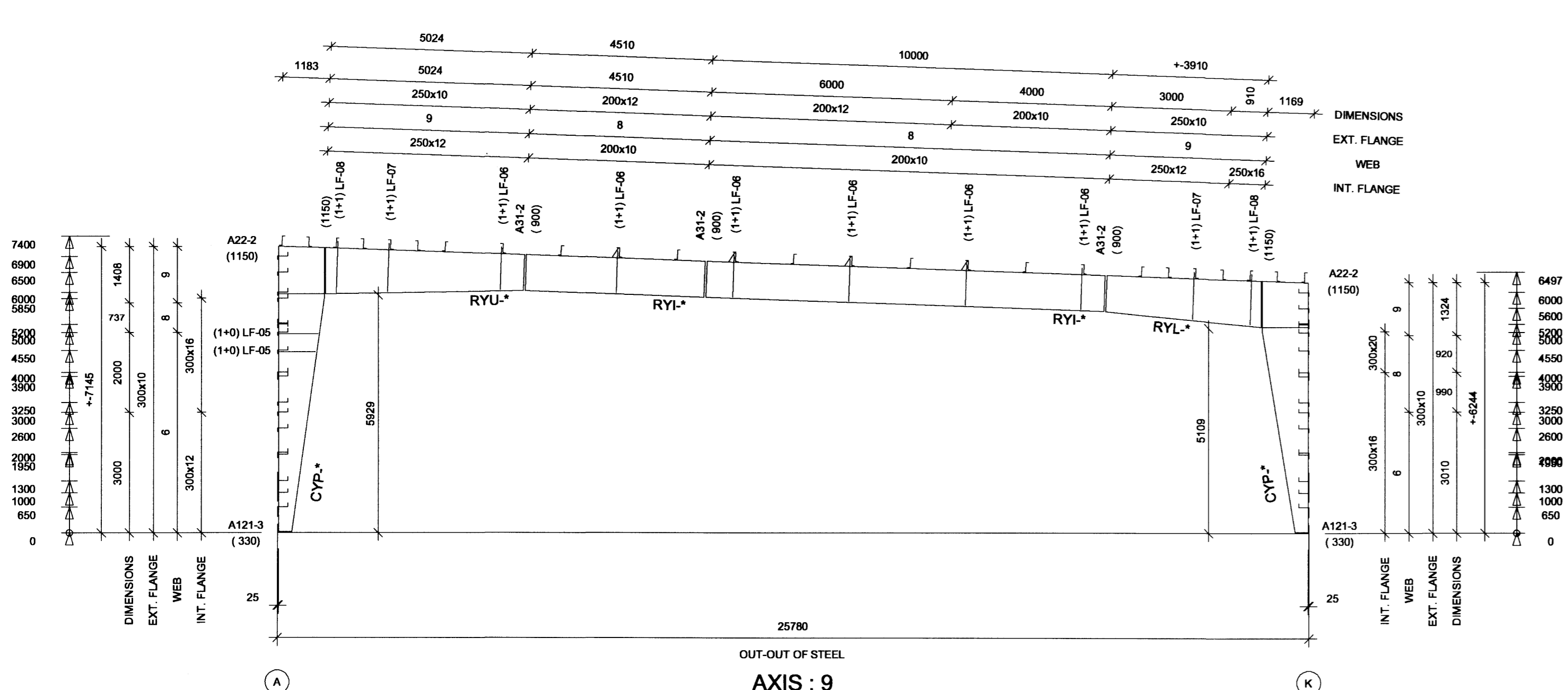
3.500 100.00



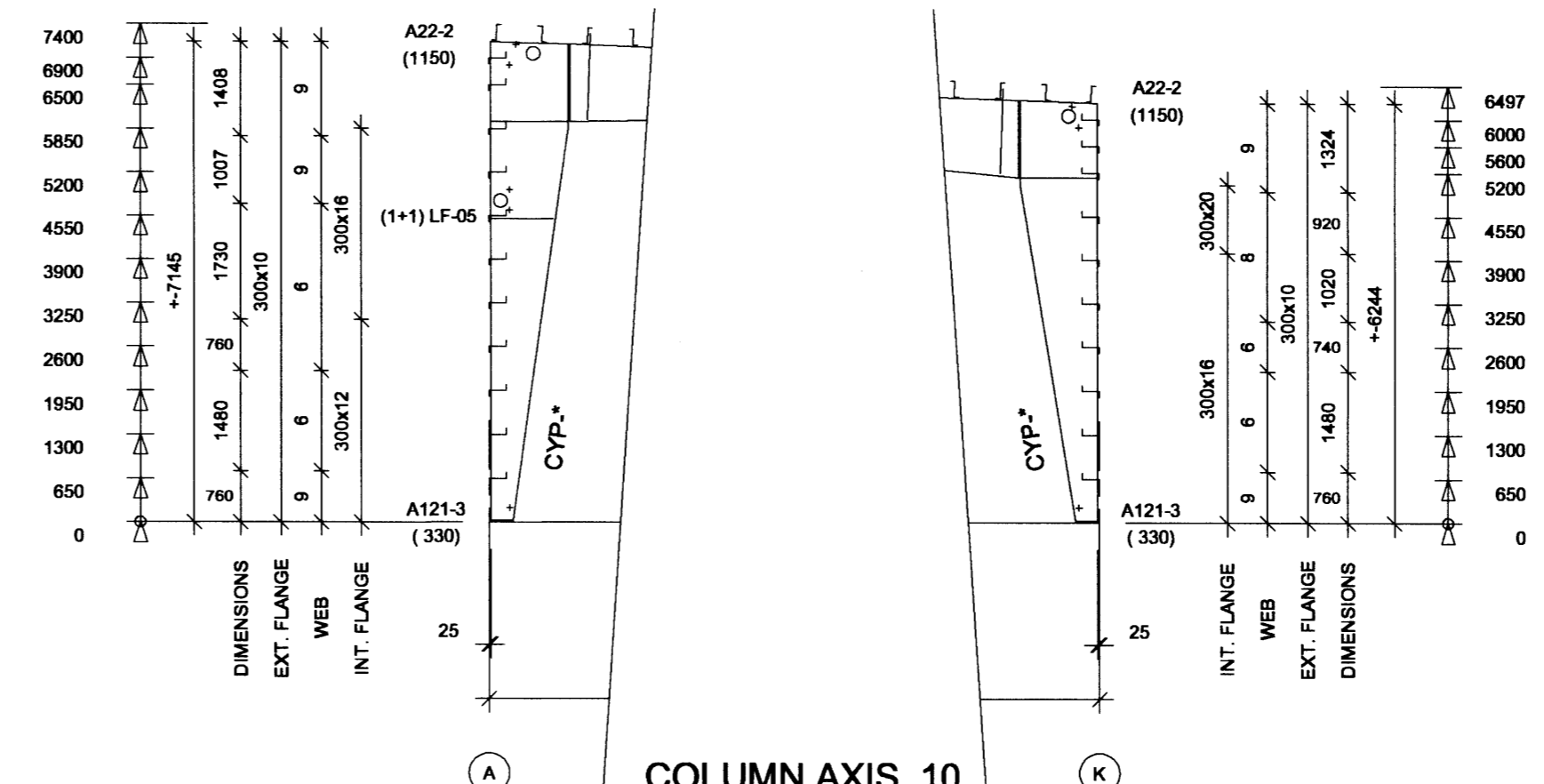
OUT-OUT OF STEEL
AXIS : 5 + 6



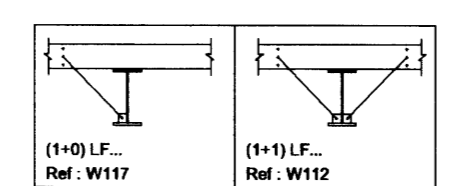
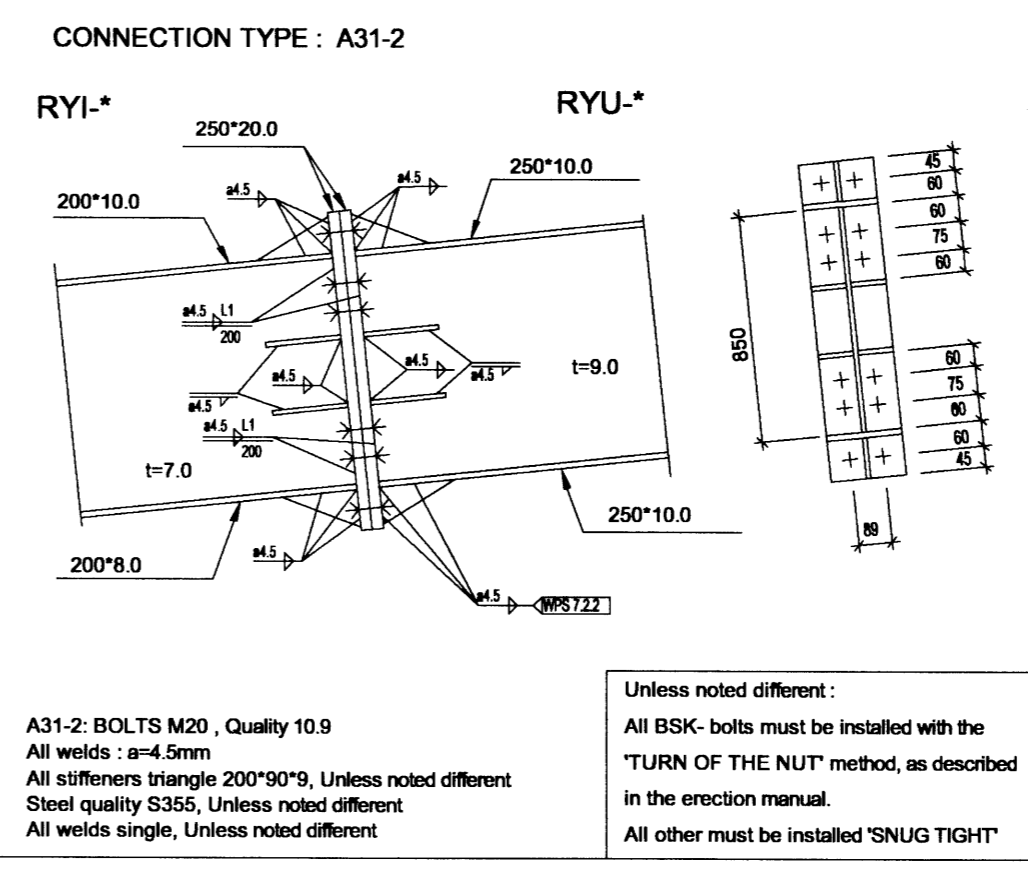
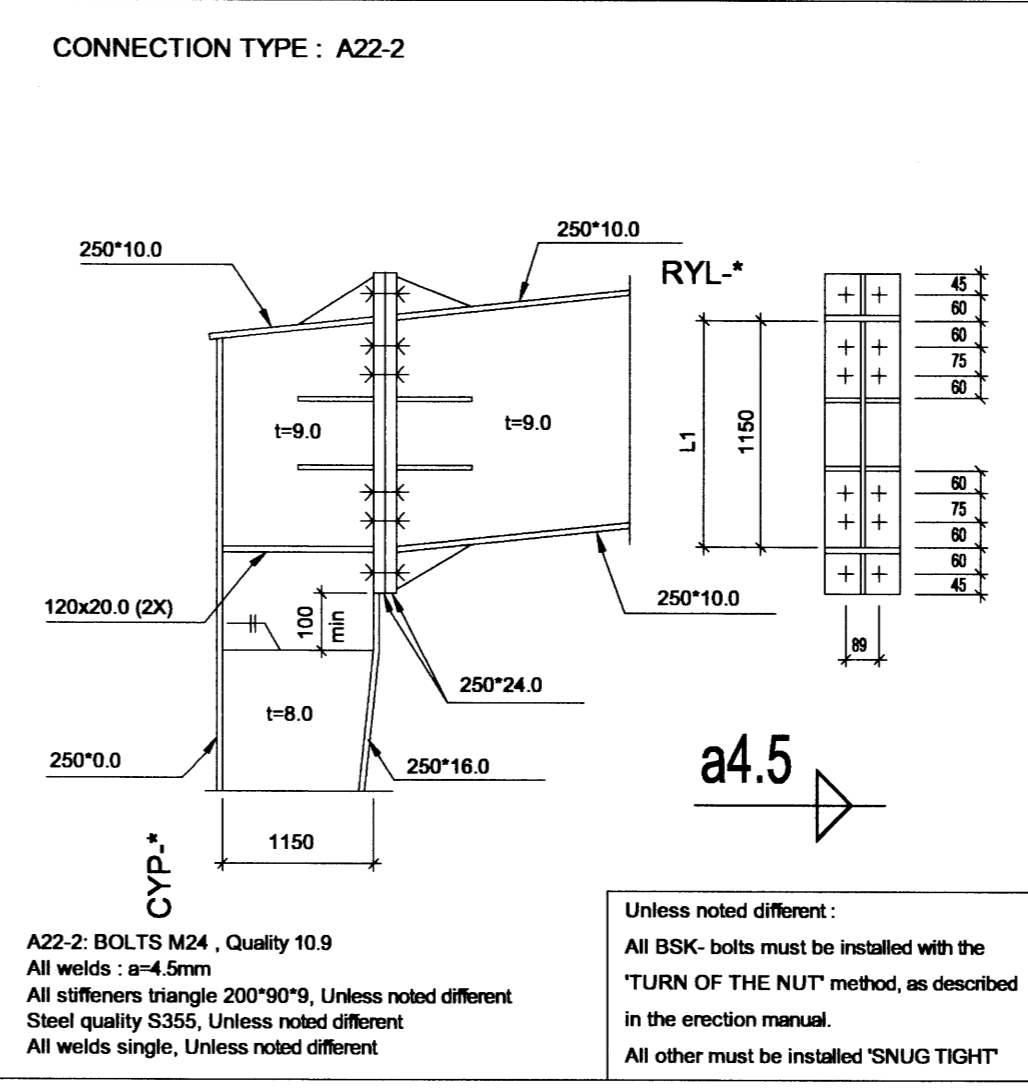
OUT-OUT OF STEEL
AXIS : 7 + 8



OUT-OUT OF STEEL
AXIS : 9



COLUMN AXIS 10



ATTENTION

The complete building must be erected according to the erection documents and manuals as provided by ASTRON and all applicable local codes and standards. Moreover, we draw your attention to the points below as they are most critical for the building stability :

1. Correct amount, type, position and installation of flange bracings (LF- ; XLF-) in roof and walls.
2. Double nuts on the wind bracing rods and wind bracing being fastened.
3. Structural bolts in grade 10.9 must be assembled with structural nuts and washers in the same 10.9 grade only. Place structural bolts 10.9 grade as indicated on drawings.
4. Correct fastening of all the structural bolts using the method as specified by ASTRON
5. Correct number of all purins and girts spacers (CL 00025, CL 00021...).
6. Correct number and location of double purins.
7. Correct positioning of the sag rods (RSG.) and cleats (CL 00140).

STD PROFILES DESCRIPTION LIST

LF- : FLANGE BRACING 54*54*3.0

TECHNICAL NOTES

- General
1. Drawings must be read in conjunction with ASTRON Technical Manual.
 2. Building components must be erected in accordance with erection information supplied by Astron Buildings and all applicable local codes and standards.
 3. All measurements are in millimetres
 4. * = Field adapted
 5. Purlin spacings are rounded to mm and cannot be added
- Foundations and Anchor Bolts
1. Foundations must be designed by a qualified foundation engineer (more details on AB-layout)
 2. Applicable columns reactions see chart "Foundation Reactions"
- Primary and Secondary Structural Framing
1. Flange bracing installation as per technical manual (TM) standard detail W1 ... chapter
 2. Unless noted different:
 - 1) Purlin diaphragms - at peak (see TM W316, W326, W327) - Double purlins (see TM W311, W321)
 - 2) Wind bracing details, see TM chapter W2..
 - 3) Roof stabilization if necessary:
 - Purlins spacers (RIS... see TM details W37. and W 38.)
 - Sag rods (RSG.) see TM W... and cross-section.
 - Tie straps (HC 00250) see TM W... chapter.

Panels and Accessories

1. Field locate roof openings and accessories
2. Field cut and adapt girts and panels shown in overlap with an accessory element
3. Compensation of panel tolerance currently during installation

This design is the property of ASTRON BUILDINGS, a member of the Lindab Group. Copying and manufacturing components according to these drawings or calculations is illegal.

DET: 2T12A			
PROJ: FEDEX, Seltella 9 - Seltella 9	BID: mest		
BUILDING: AL -3.5% SPAN 25,780m EH7.400m L45.23m			133632
LOADS: LL/WL/Adcl.: 110/180/40 (DelNm2)			CS-2
NORMS: PRIM. EC3 SEC. ZUL			
		CROSS SECTION AXIS 5 - 10 (SCALE: 1/100)	
REV. A	REV. B	DATE: 05/10/07	ENG.: B. Schaffner
REV. C		DRAF: N. Michaux	
ASTRON BUILDINGS S.A. - P.O.Box152 - L-9202 DIEKIRCH-LUXEMBOURG - Tel:+352 80 29 11 - Fax:+352 80 34 66			

27. Jan. 2007
HÚS OG RÁÐGJÖF ehf.
 ARKITEKTUR OG VEKURRÆÐISTOFA
 Kt. 5118/93-2529 - Vsk. 37600
 Skúlagáttu 63 - 105 Reykjavík
 Sími 562-2420 - Fax 562-2430
Hjón G. Samuðsson
 Sámþykkt þann
 09 MARS 2007
 Byggingafulltrúinn í Hafnarfirði
 F.h. Sigurbjartur Halldórsson