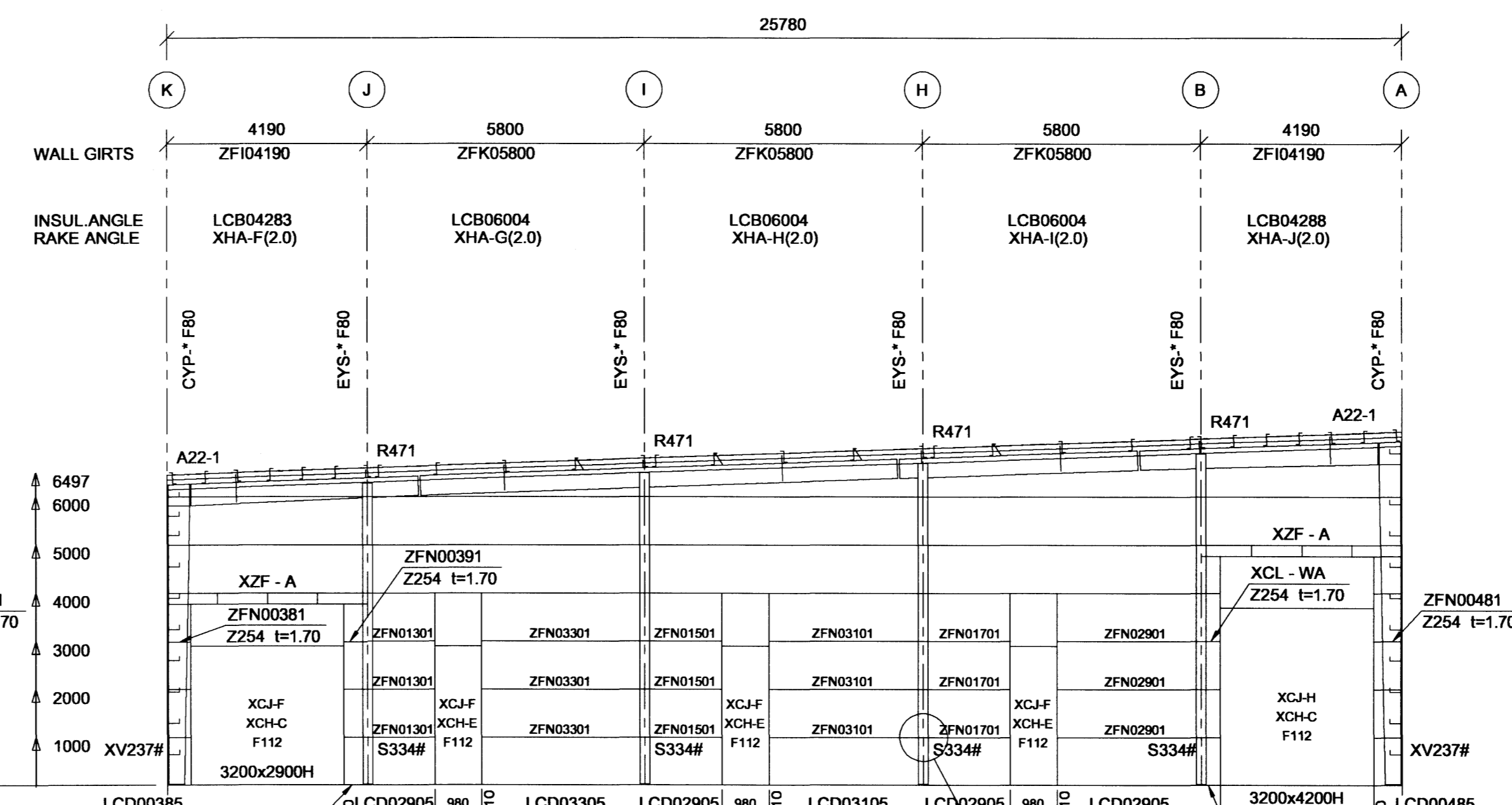
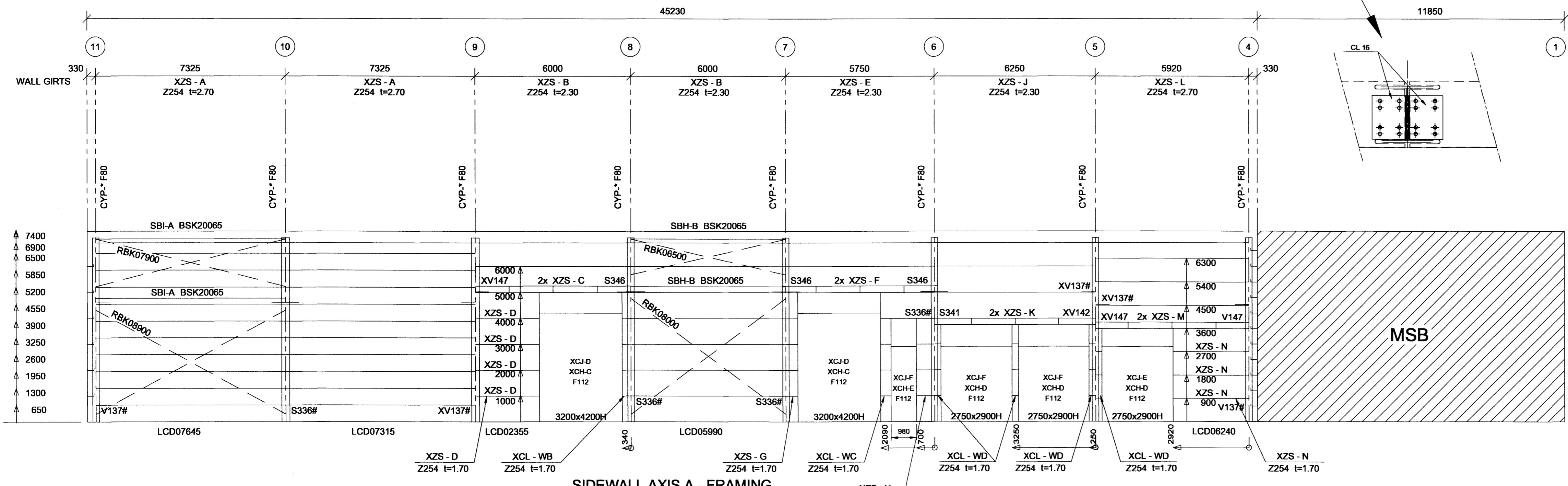


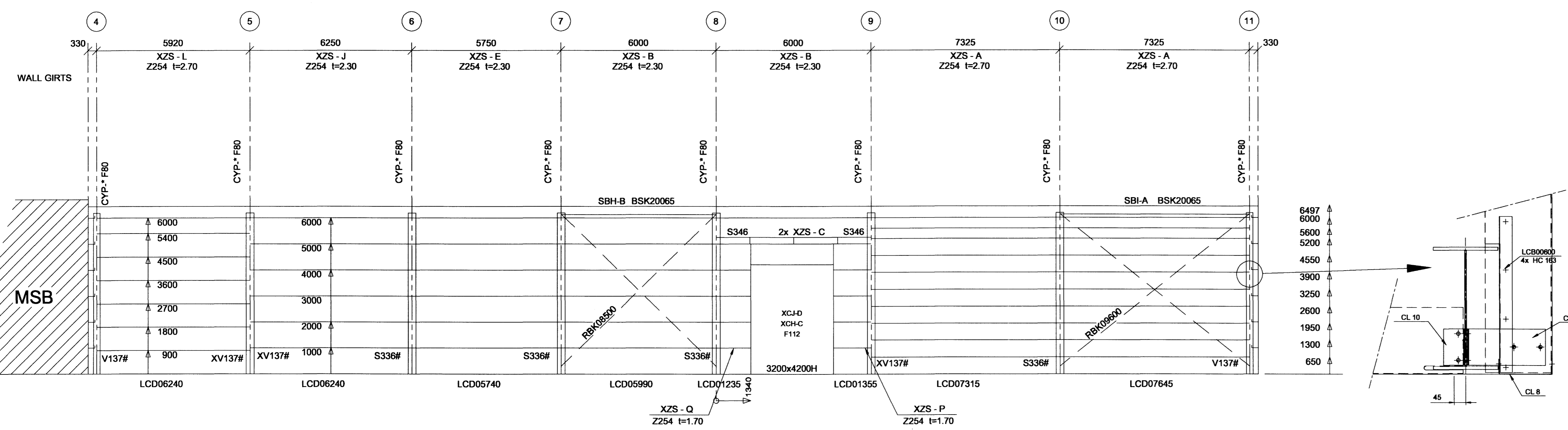
ENDWALL AXIS 4 - FRAMING



ENDWALL AXIS 11 - FRAMING



SIDEWALL AXIS A - FRAMING



SIDEWALL AXIS K - FRAMING

Unless noted different :  
 All BSK - bolts must be installed with the  
 'TURN OF THE NUT' method, as described  
 in the erection manual.  
 All other must be installed 'SNUG TIGHT'

### ATTENTION

The complete building must be erected according to the erection documents and manuals as provided by ASTRON and all applicable local codes and standards. Moreover, we draw your attention to the points below as they are most critical for the building stability :

1. Correct amount, type, position and installation of flange bracings (LF-; XLF-) in roof and walls.
2. Double nuts on the wind bracing rods and wind bracing being fastened.
3. Structural bolts in grade 10.9 must be assembled with structural nuts and washers in the same 10.9 grade only. Place structural bolts 10.9 grade as indicated on drawings.
4. Correct fastening of all the structural bolts using the method as specified by ASTRON
5. Correct number of all purlins and girts spacers (CL. 00025, CL. 00021...).
6. Correct number and location of double purlins.
7. Correct positioning of the sag rods (RSG..) and cleats (CL. 00140).

#### STD PROFILES DESCRIPTION LIST

LCB : ANGLE 50x50x2.0  
 LCD : NOT DEFINED  
 RBK : TIE ROD DIAM 30  
 SBH : STRUT PIPE 168 \* 4.0  
 SBI : STRUT PIPE 168 \* 6.35  
 ZFI : ZEE SIMPLE SPAN 254\*2.00  
 ZFK : ZEE SIMPLE SPAN 254\*2.70

#### NSTD PROFILES DESCRIPTION LIST

EYS : ENDWALL COLUMN  
 XCH-C : DOOR HEADER 254 \* 2.95  
 XCH-D : DOOR HEADER 254 \* 2.95  
 XCH-E : DOOR HEADER 254 \* 2.95  
 XCH-F : DOOR JAMB 254 \* 1.91  
 XCH-G : DOOR JAMB 254 \* 1.91  
 XCH-H : DOOR JAMB 254 \* 1.91  
 XHA : RAKE ANGLE

#### TECHNICAL NOTES

- General
1. Drawings must be read in conjunction with ASTRON Technical Manual.
  2. Building components must be erected in accordance with erection information supplied by Astron Buildings and all applicable local codes and standards.
  3. All measurements are in millimetres
  4. \* = Field adapted
  5. Purlin spacings are rounded to mm and cannot be added
- Foundations and Anchor Bolts
1. Foundations must be designed by a qualified foundation engineer (more details on AB-layout)
  2. Applicable columns reactions see chart "Foundation Reactions"
- Primary and Secondary Structural Framing
1. Flange bracing installation as per technical manual (TM) standard detail W1 - chapter
  2. Unless noted different:
    - 1) Purlin diaphragms - at peak (see TM W316, W326, W327) - Double purlins (see TM W311, W321)
    - 2) Wind bracing details, see TM chapter W2..
    - 3) Roof stabilization if necessary:
      - Purlins spacers (HS...) see TM details W37. and W 38.)
      - Sag rods (RSG.) see TM W... and cross-section.
      - Tie straps (HC 00250) see TM W7.. chapter.
- Panels and Accessories
1. Field locate roof openings and accessories
  2. Field cut and adapt girts and panels shown in overlap with an accessory element
  3. Compensation of panel tolerance currently during installation

27. Jan. 2007  
 HUS OG HADJÖR ehf.  
 IRRITFERUR OG FERKFRÆÐISSTOFA  
 KÍ-510193-2329 - Vax. 37600  
 Skúlagata 63 - 105 Reykjavík  
 Sími 562-2430 - Fax 562-2430  
 Hólar G. Samiðsson  
 Samþykkt þann  
 09 MARS 2007  
 Byggingafulltrúinn í Hafnarfirði  
 E. Sigurbjartur Halldórsson

This design is the property of ASTRON BUILDINGS, a member of the Lindab Group. Copying and manufacturing components according to these drawings or calculations is illegal.

DET:	2T12	4T14	A22	R471	S336	S900	S906	S907	S908	S909		
	S911	S912	S913	S914	S946	S947	S948	S949	V137	V237		
	W211	W221										

PROJ:	FEDEX, Selhella 9	SELHELLA 9	
BUILDING:	AL -3.5% SPAN 25.780m EH 7.400m L 45.23m		
LOADS:	LL/WL/AdL: 110/180/40 (DaNm2)		
NORMS:	PRIM. EC3	SEC. ZUL	

ASTRON WALLFRAMING (SCALE: 1/100)

REV. A  
 REV. B  
 REV. C

DATE: 03/01/07  
 ENG.: B. Schaffner  
 DRAF.: N. Michaux

ASTRON BUILDINGS S.A. - P.O. Box 152 - L-9202 DIEKRUCH-LUXEMBOURG - Tel: +352 80 29 11 - Fax: +352 80 34 66