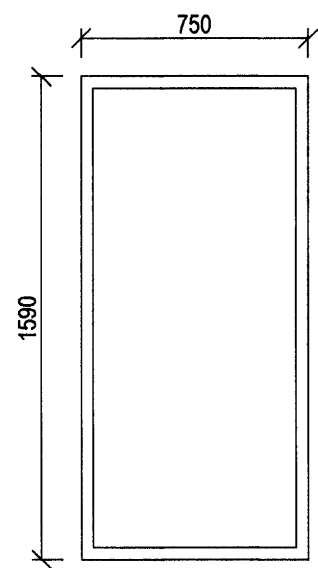
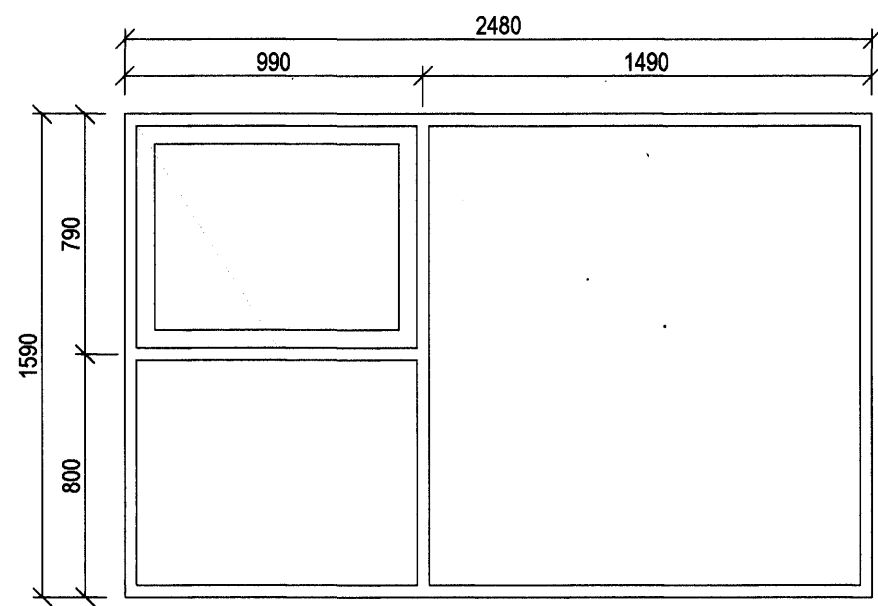


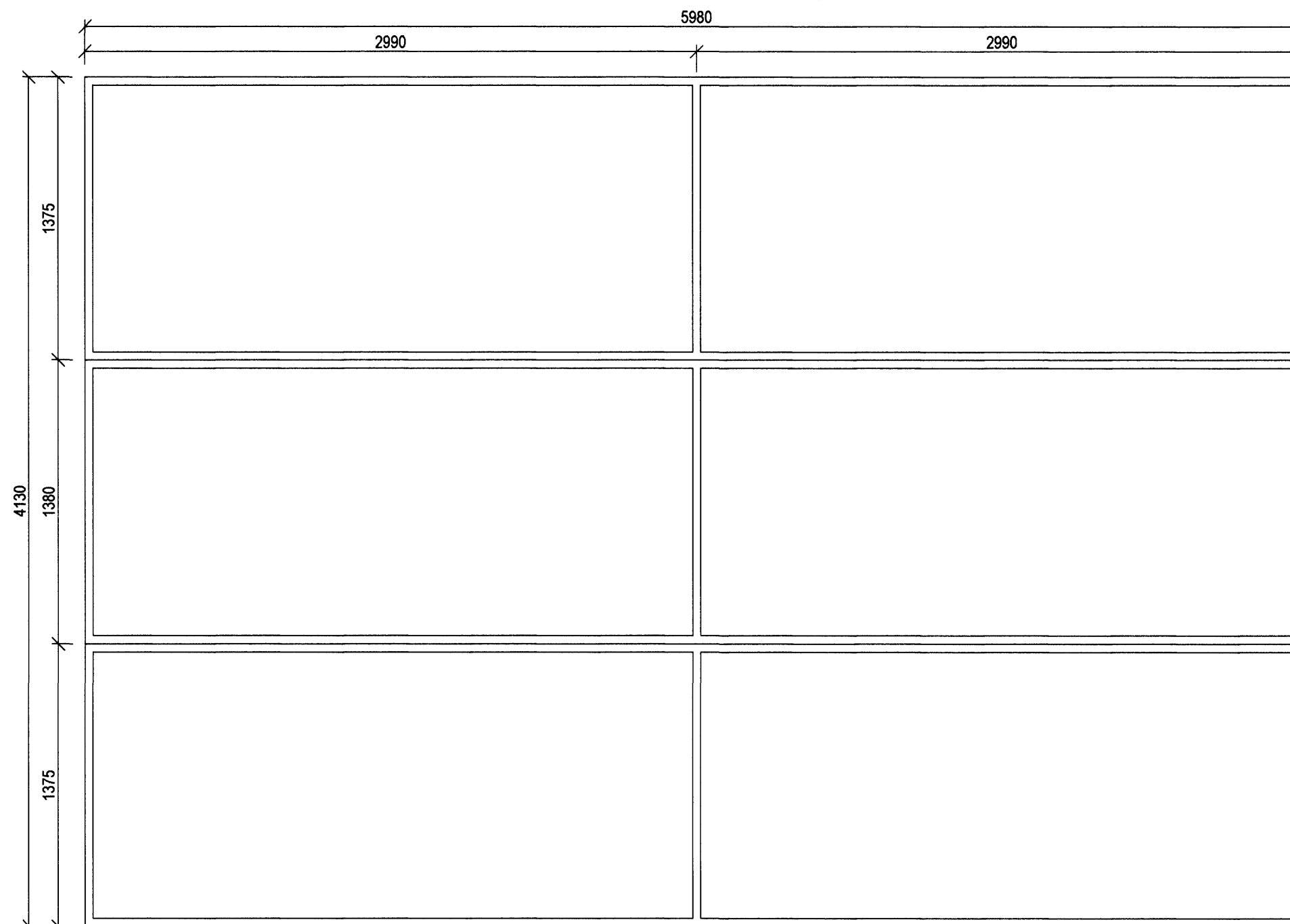
G-201, 14.stk
M= 1:25



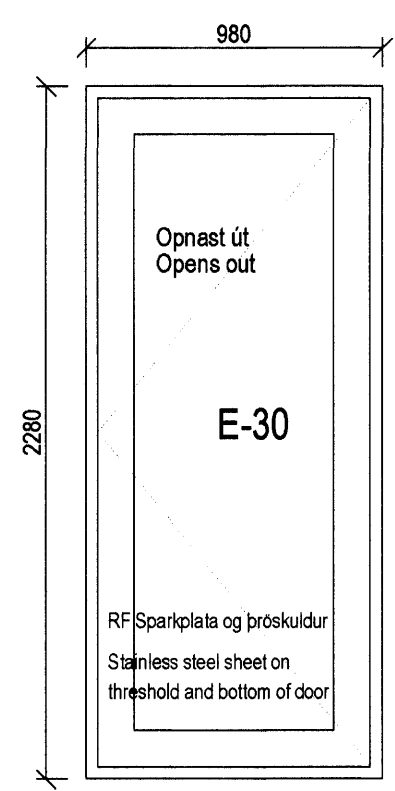
G-202, 4.stk
M= 1:25



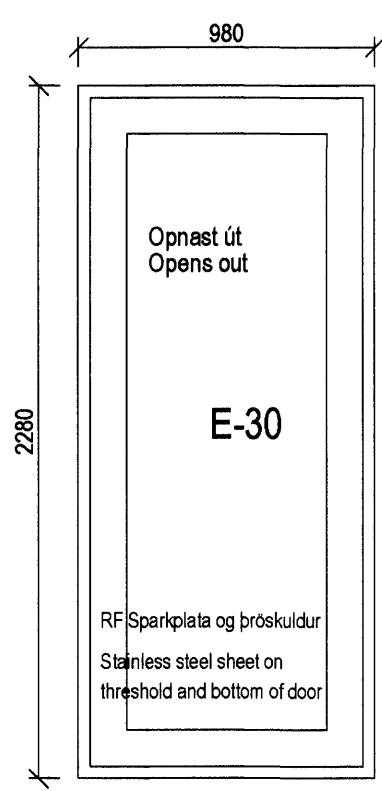
G-203, 2.stk
M= 1:25



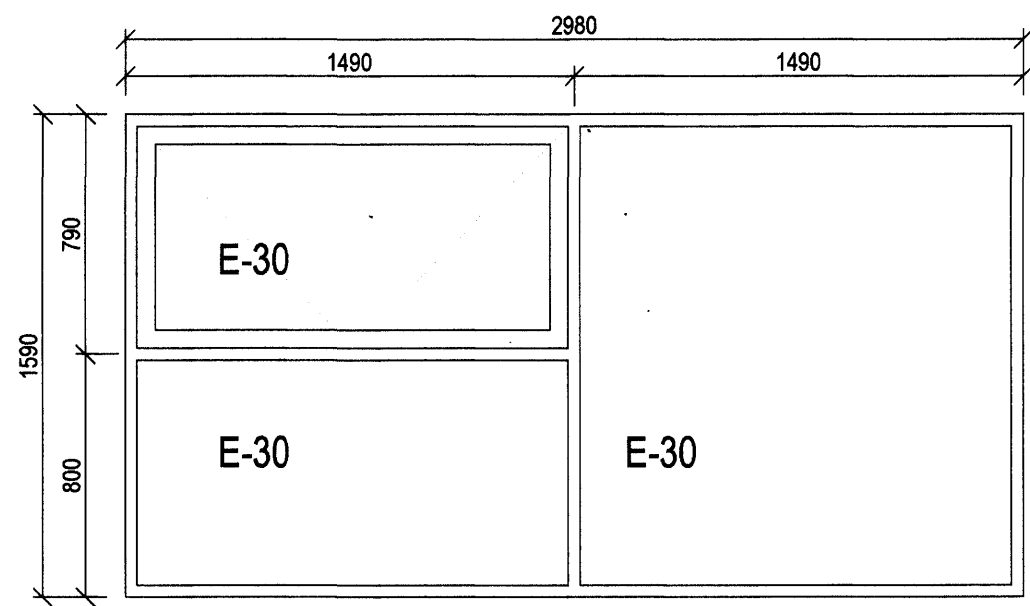
G-205, 1.stk
M= 1:25



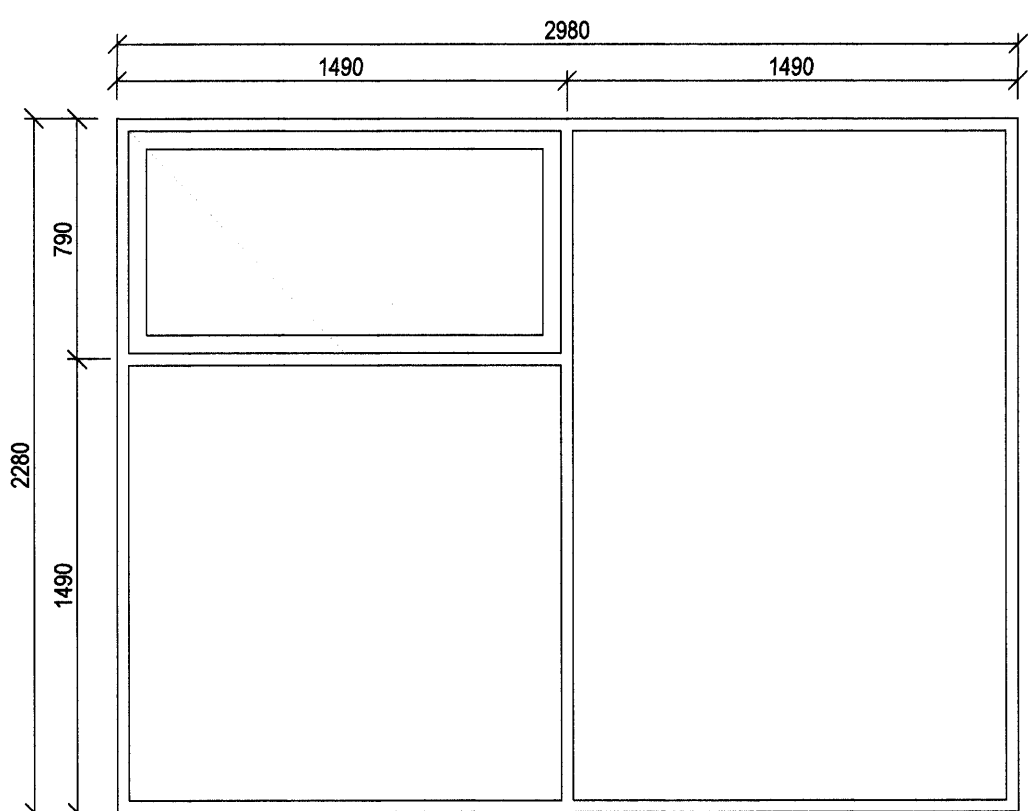
H-201, 1.stk
M= 1:25



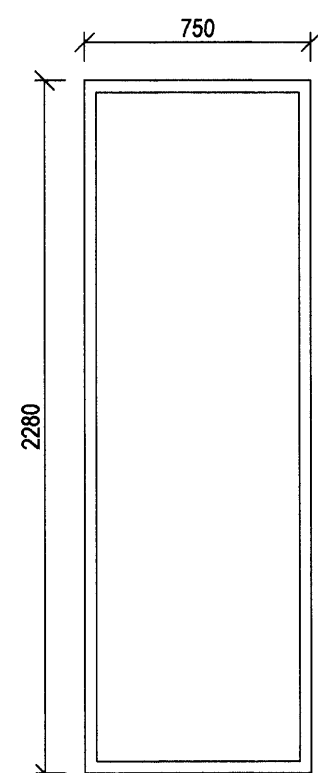
H-202, 1.stk
M= 1:25



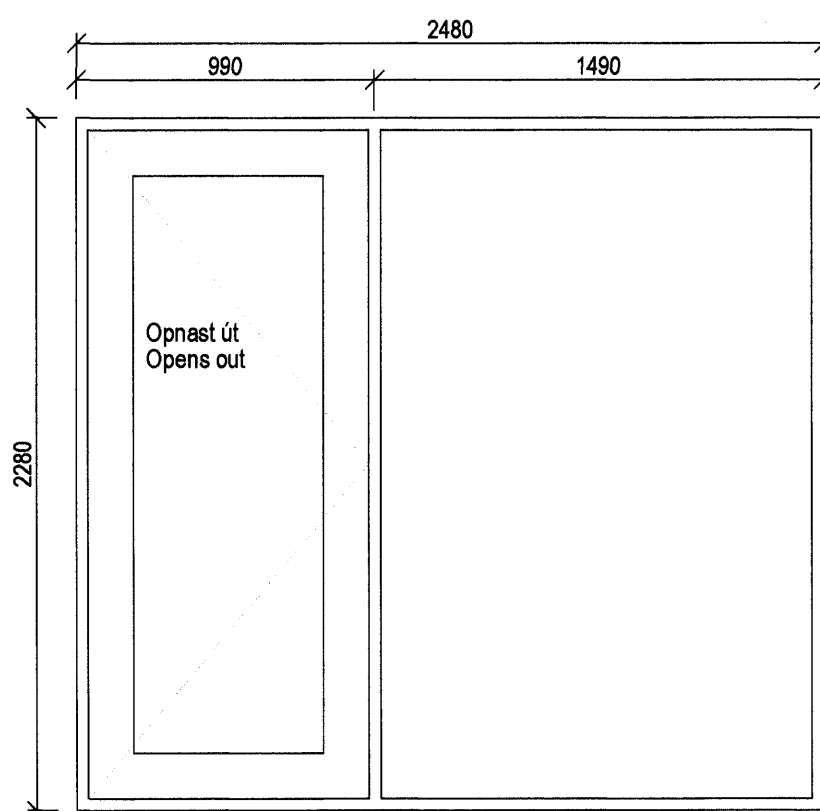
G-204, 2.stk
M= 1:25



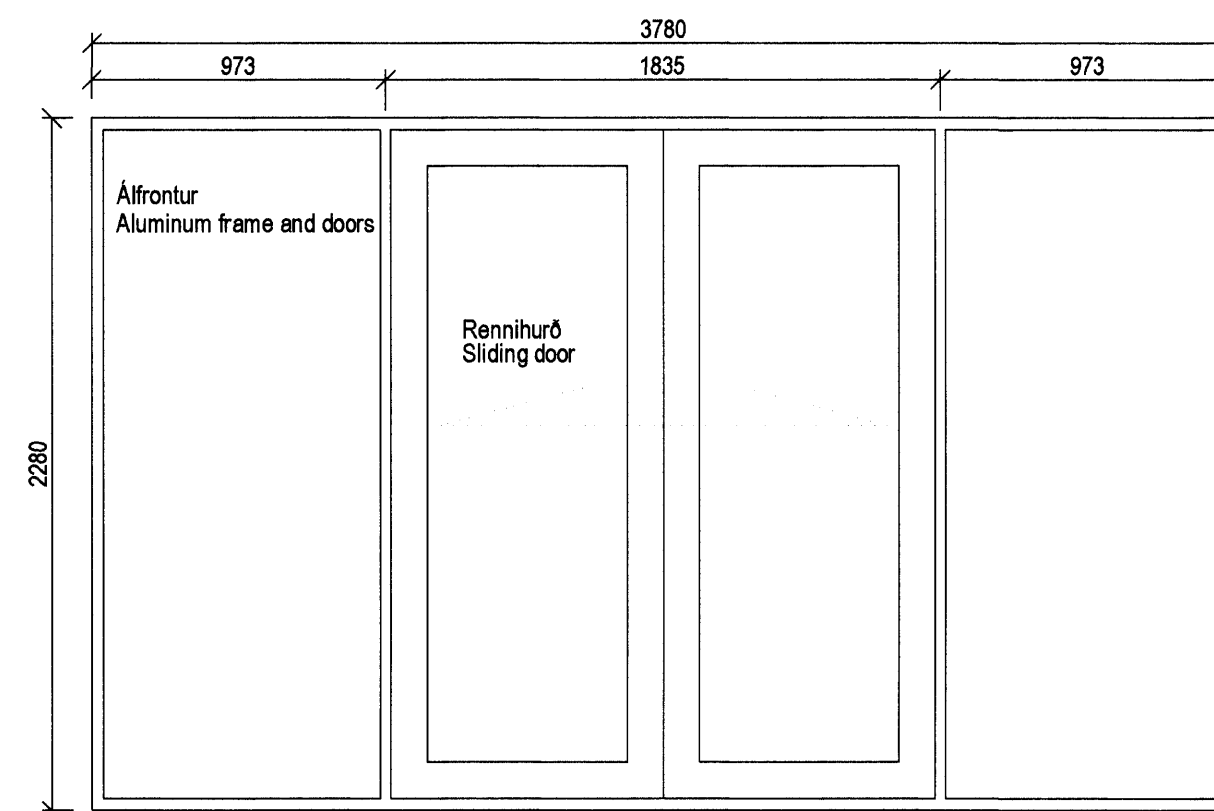
G-101, 14.stk
M= 1:25



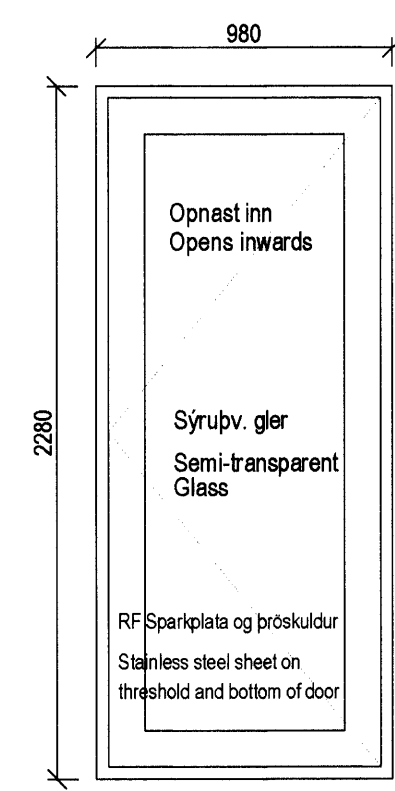
G-102, 4.stk
M= 1:25



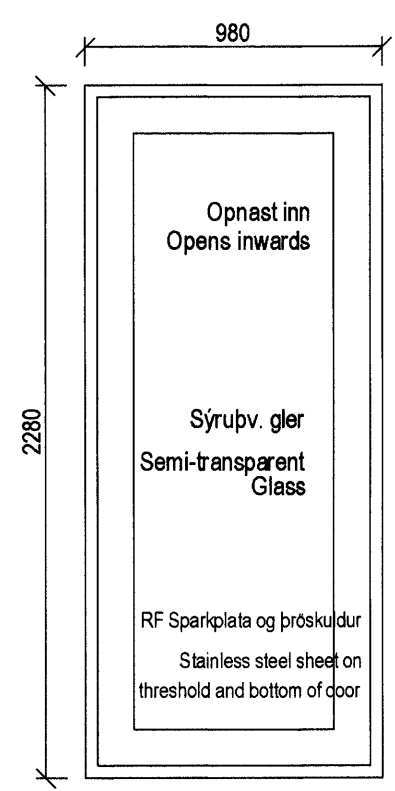
G-103, 2.stk
M= 1:25



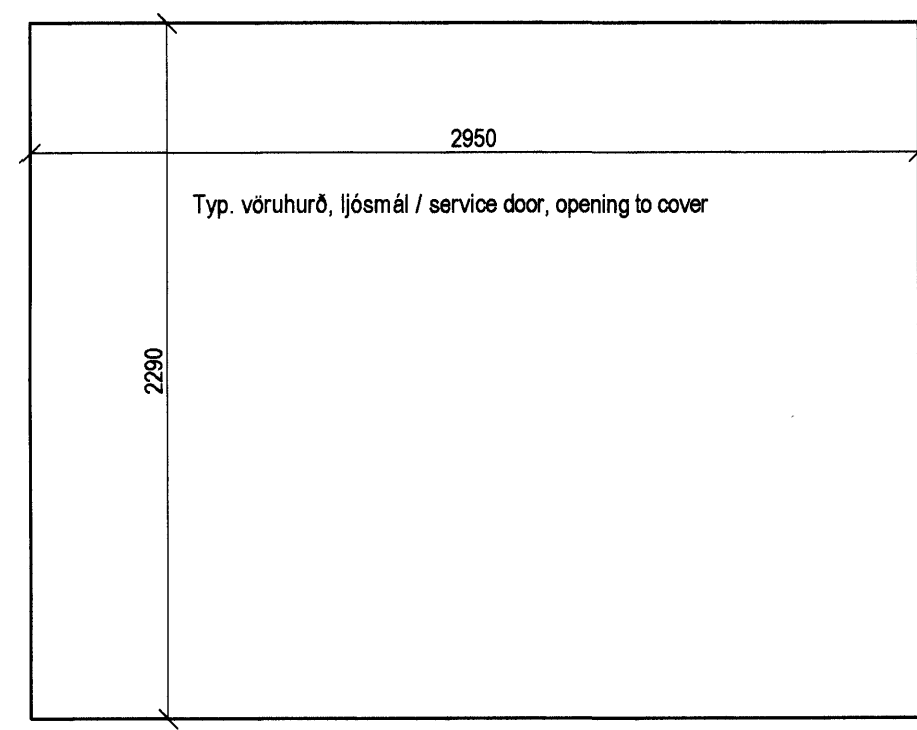
H-101, 1.stk
M= 1:25



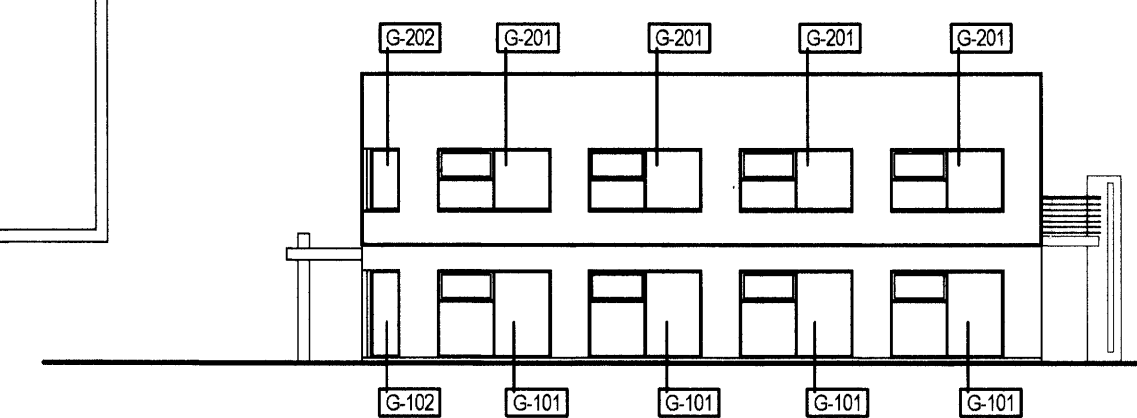
H-102, 1.stk
M= 1:25



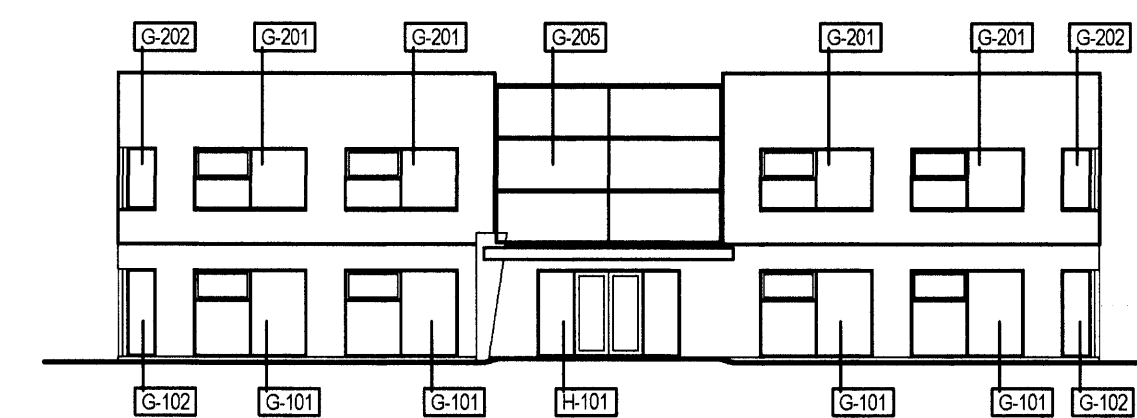
H-103, 1.stk
M= 1:25



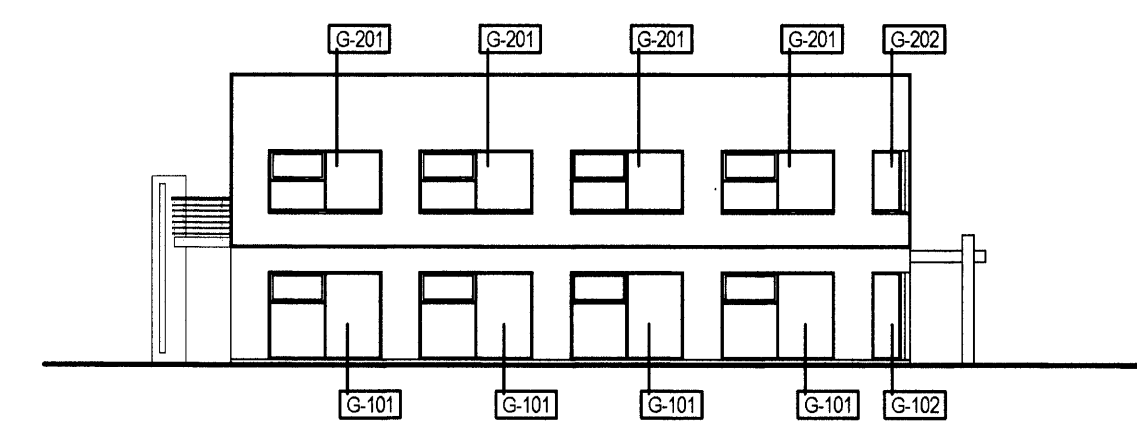
Vöruhurð, 2.stk
M= 1:25



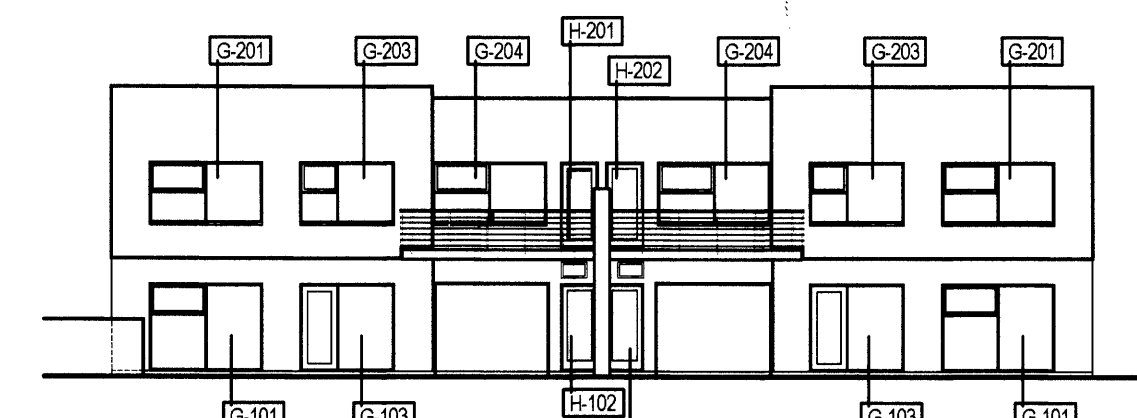
Suður
M= 1:200



Vestur
M= 1:200



Norður
M= 1:200



Austur
M= 1:200

GLUGGAR OG HURÐIR:

Gluggar eru timburgluggar / álkjæddir timburgluggar, opnanleg fög úr Oregon pine eða sambærilegu. Allt gler er "K" gler.
Allt gler skal vera sólstoppgler. Það skal vera með sólarvörn af gerðinni "Stopsol supersilver" eða sambærilegt.

Öll málmstykki sem notuð eru í glugga og hurðir skulu vera með tæringarvörn / ryðfri.

Gluggar reiknast fyrir 2,0 KN/m² vindálag.

Gluggar skulu festir með Adjufix eða heildregnum ál-vinklum.

Litur á alkápu glugga: Ral 7016
Litur á hurðarbláði aðalhurðar: Ral 9002
Hreint ál í kórnum og póstum aðalíngangshurðar
Litur á glugga og hurðarkórnum -inni: Ral 9010
Litur á vöruhurð Ral 7016

Einungis skal notast við CE merktá byggingarhluti.

Sambýlta þann
18. OKT. 2006
Byggingarkennitalmiðun
E.h. Sigurbjartur Heiðskósson

GLÓRA
NORÐURHELLA 17
221 HAFNARFJÖRDUR
GLUGGATEKNIING
SIA TERN