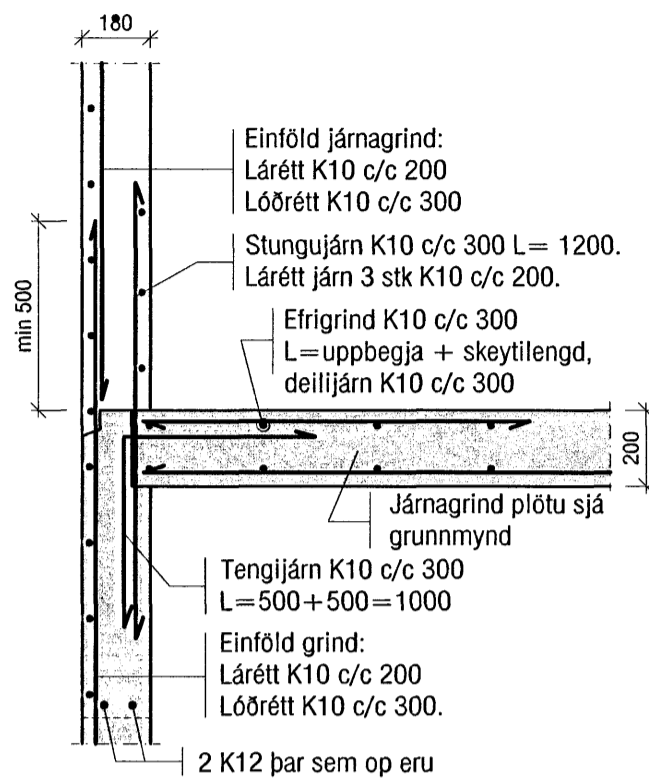
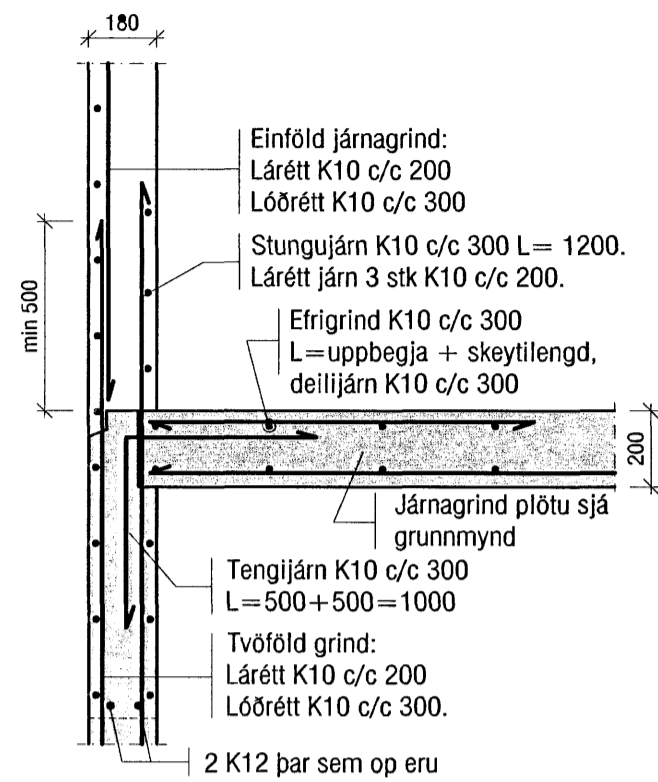


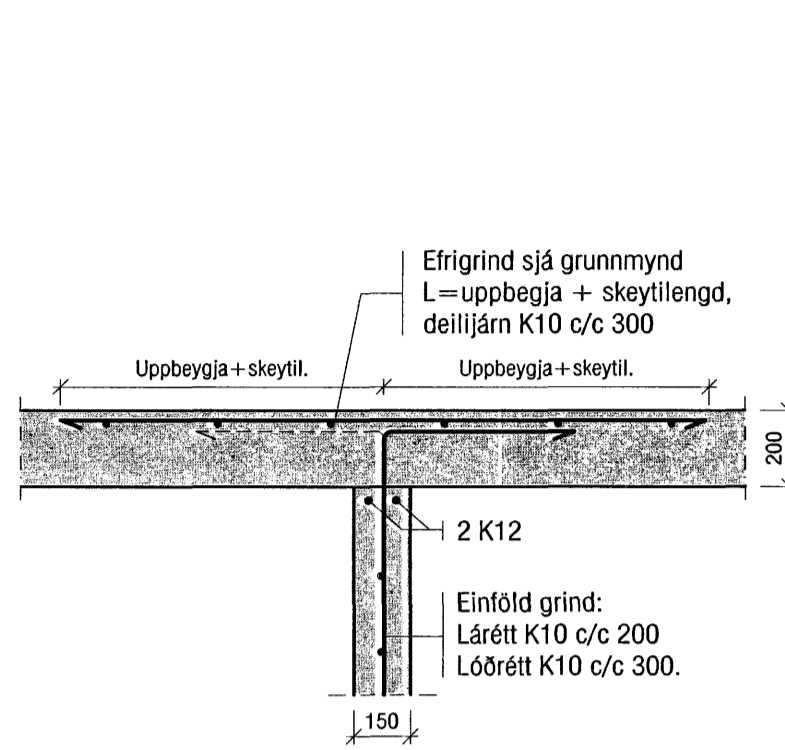
Mkv.1:20  
P1  
B-04



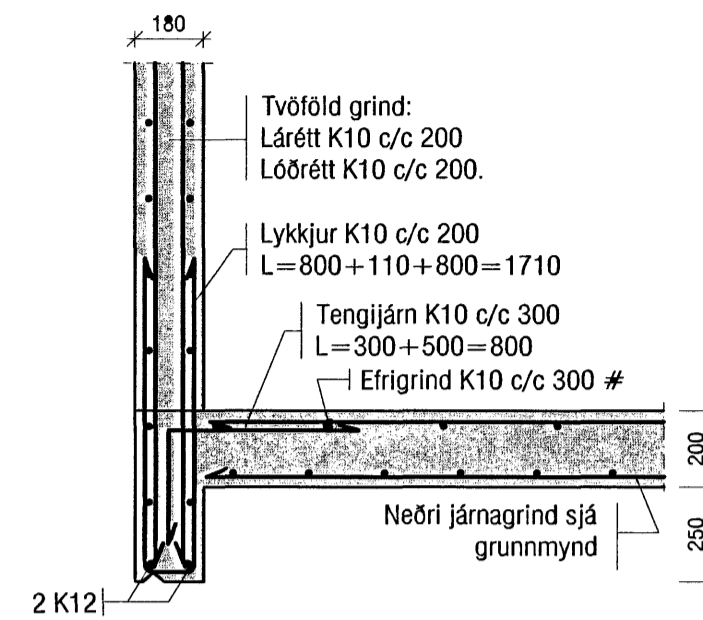
Mkv.1:20  
P2  
B-04



Mkv.1:20  
P3  
B-04

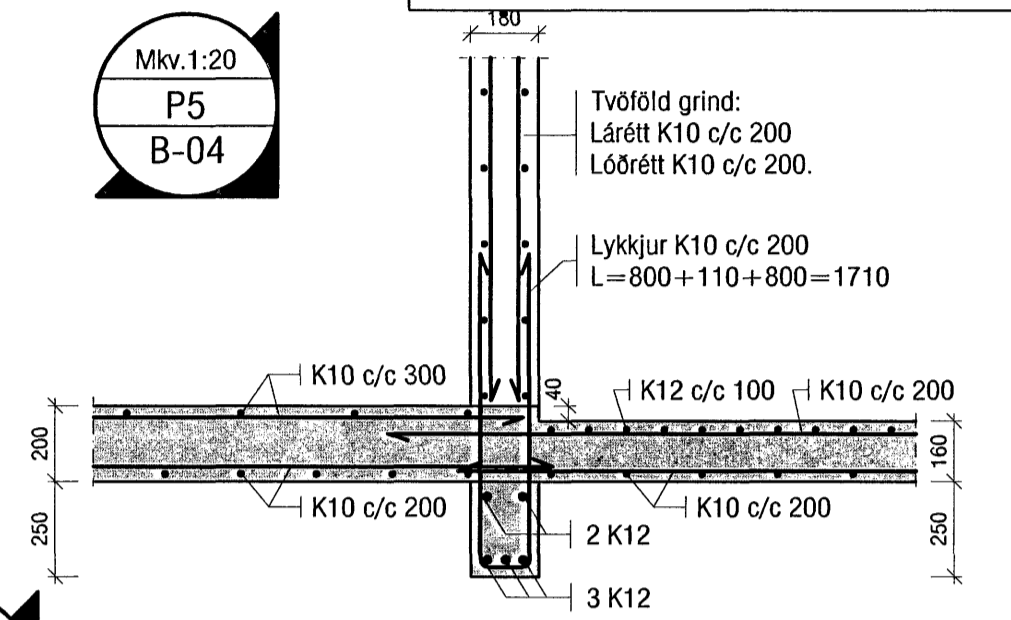


Mkv.1:20  
P4  
B-04

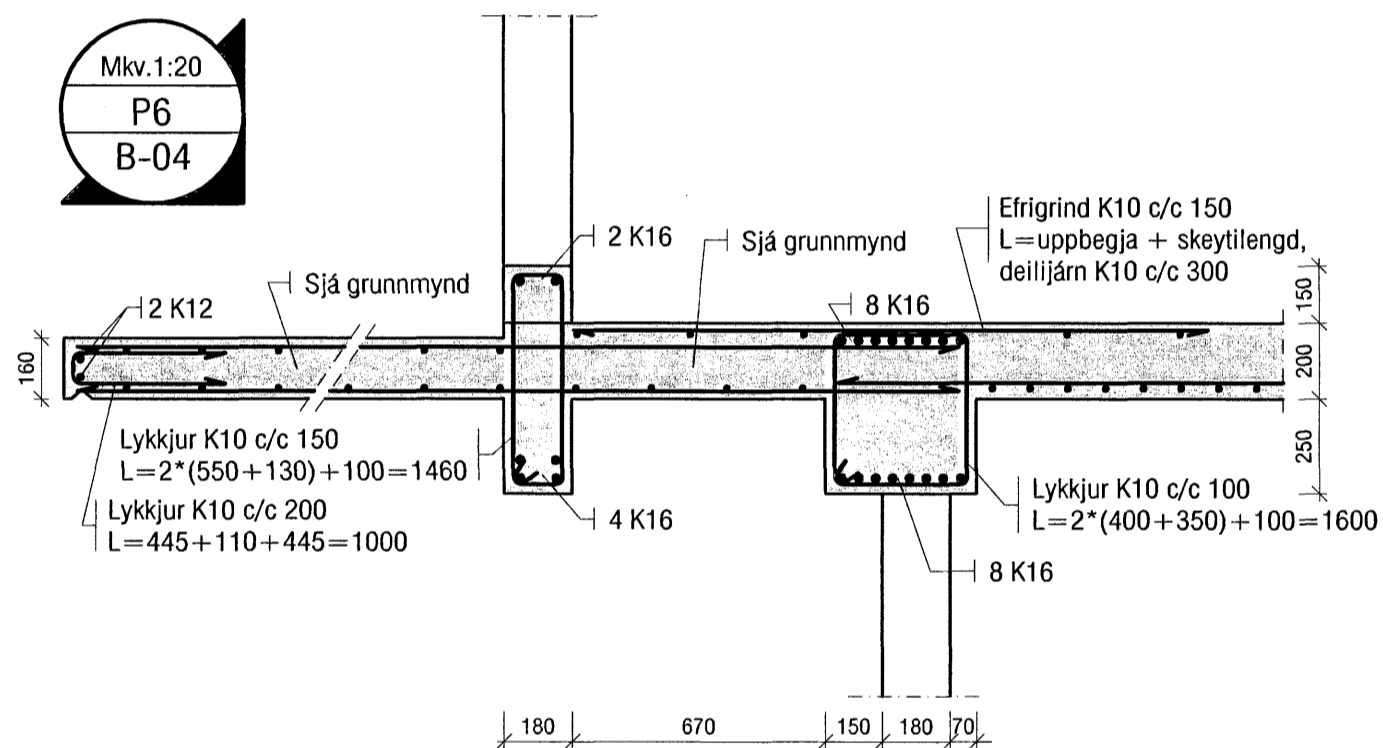


Byggingafulltrúi Hafnarfjarðar  
Afgreitt þann  
22 AUG 2007  
G.G.

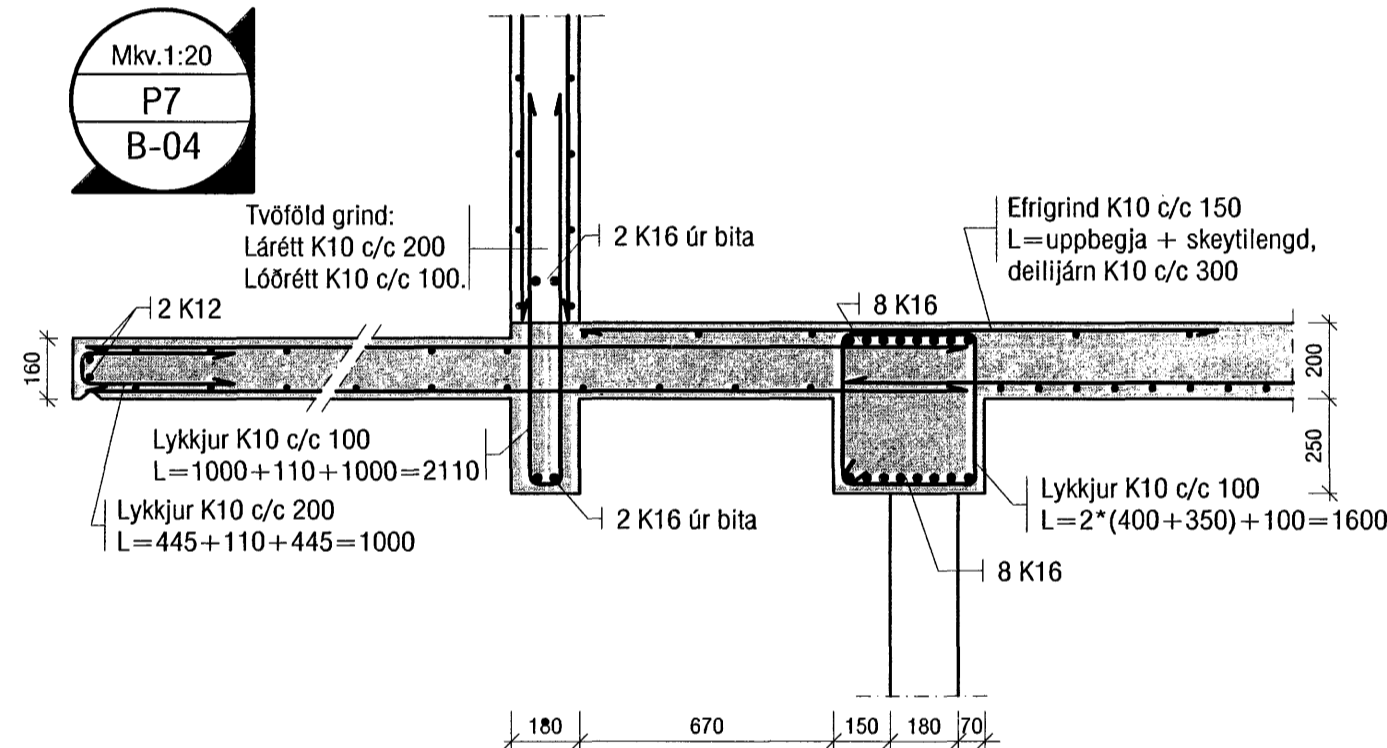
Mkv.1:20  
P5  
B-04



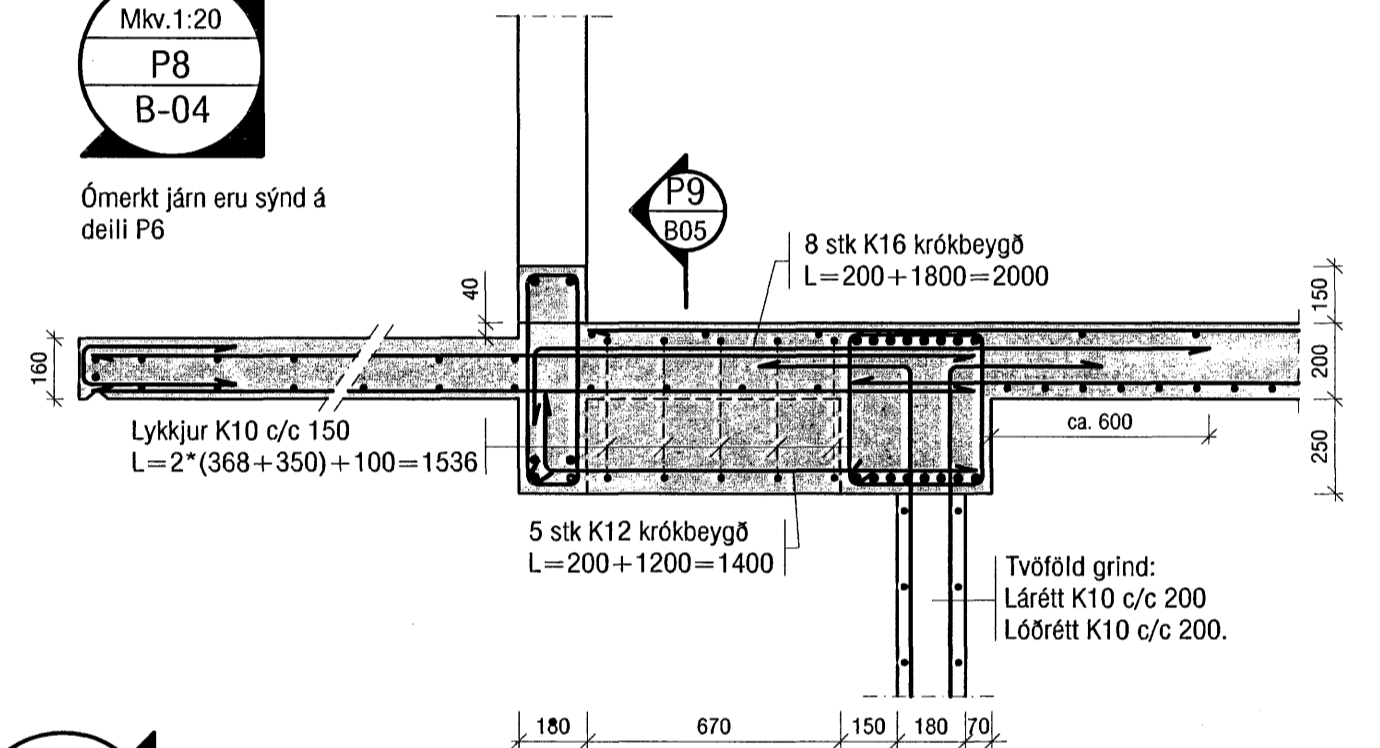
Mkv.1:20  
P6  
B-04



Mkv.1:20  
P7  
B-04

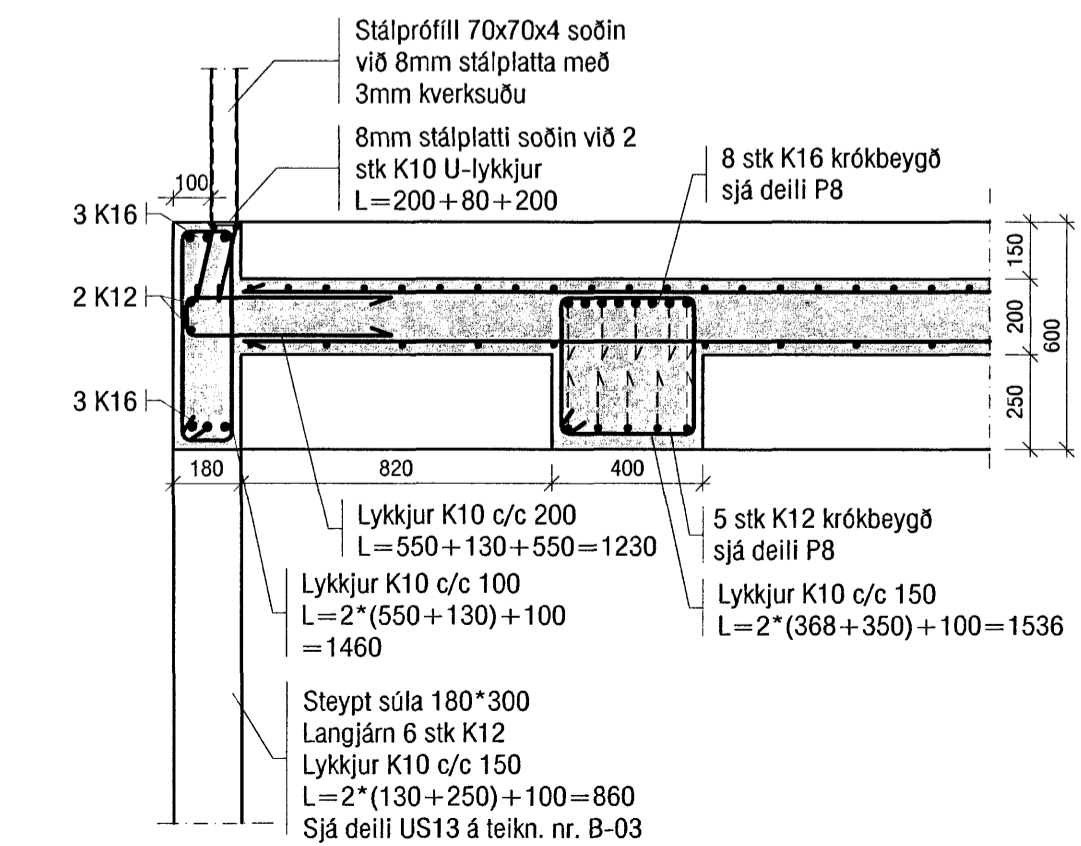


Mkv.1:20  
P8  
B-04



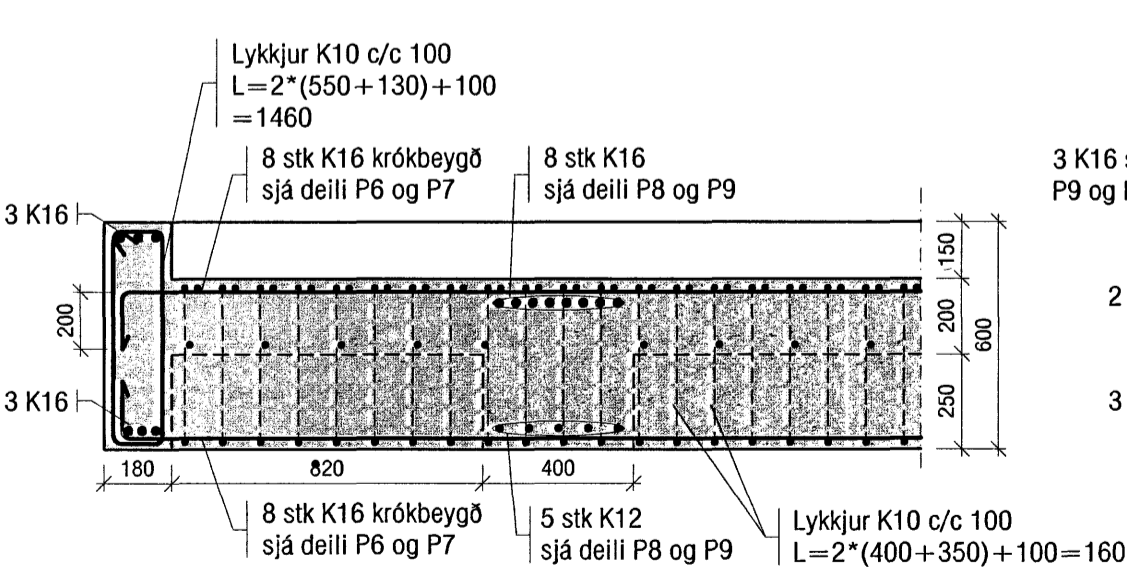
Mkv.1:20  
P9  
B-04

K 16 járn í bitum skulu ná minnst skeytilengd sína inn fyrir ásetur.

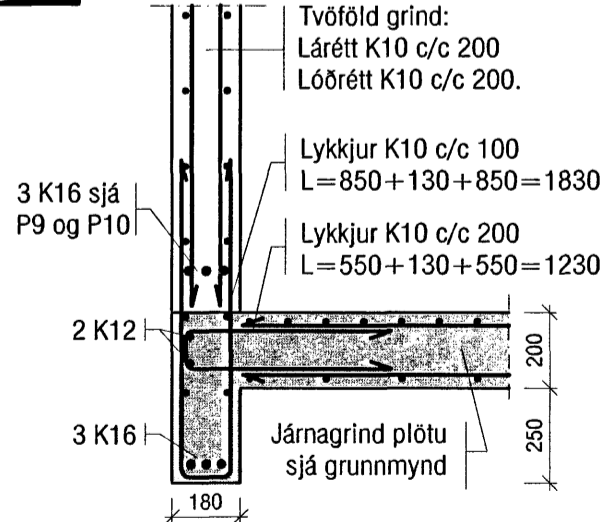


Mkv.1:20  
P10  
B-04

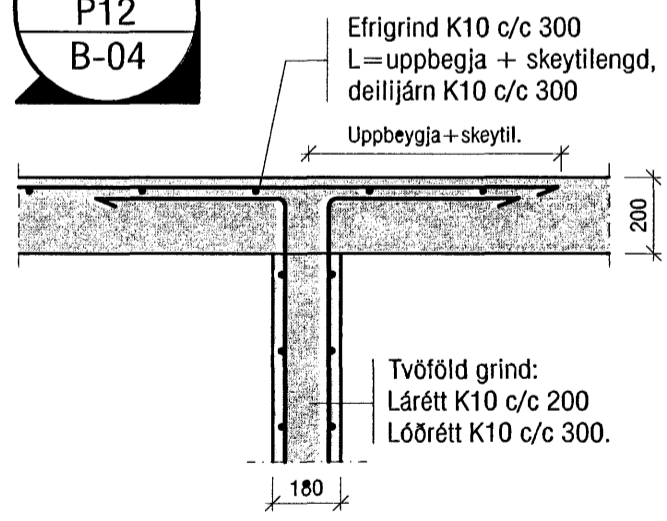
K 16 járn í bitum skulu ná minnst skeytilengd sína inn fyrir ásetur.



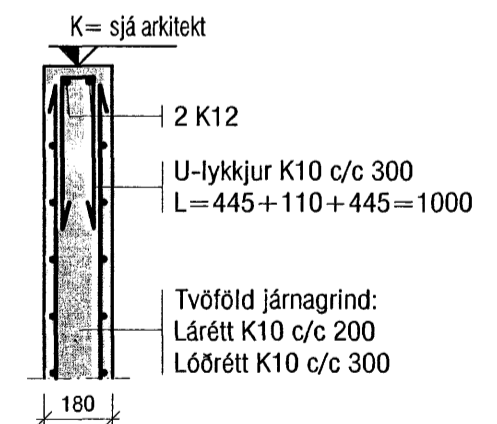
Mkv.1:20  
P11  
B-04



Mkv.1:20  
P12  
B-04



Mkv.1:20  
P13  
B-04



**VEKTOR**  
- hönnun og ráðgjöf -  
Akralind 6, 201 Kópavogi.

Sigurður Hafsteinsson  
byggingateknifræðingur  
Kl. 030 89 7749  
sími: 554-8650 fax: 554-8668.

Furuás 26, Hafnarfirði

Plata yfir 1.hæð  
Deili

Teikn. nr. Tilvísun á teikningu  
Samþykkt *[Signature]*  
Br. Dags.

Hannað PJ  
Teiknað PJ  
Dagsetning 05.07.07  
Verk nr. A-06-12-61  
Mælikvarði 1:20  
Teikn. nr. B-05