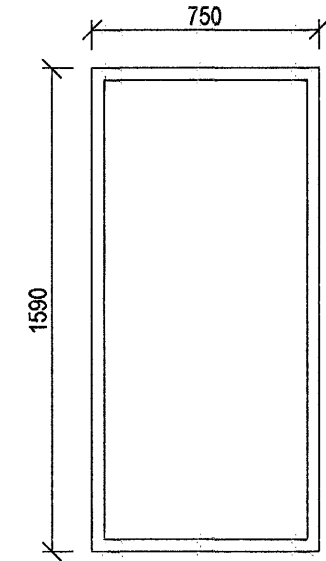
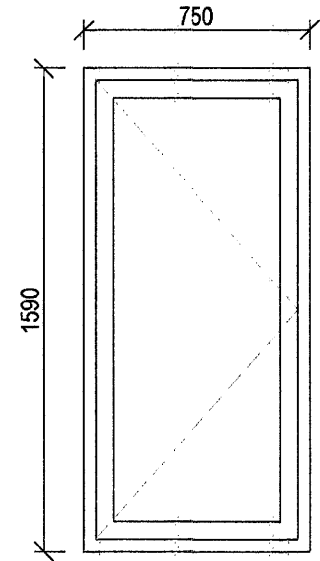


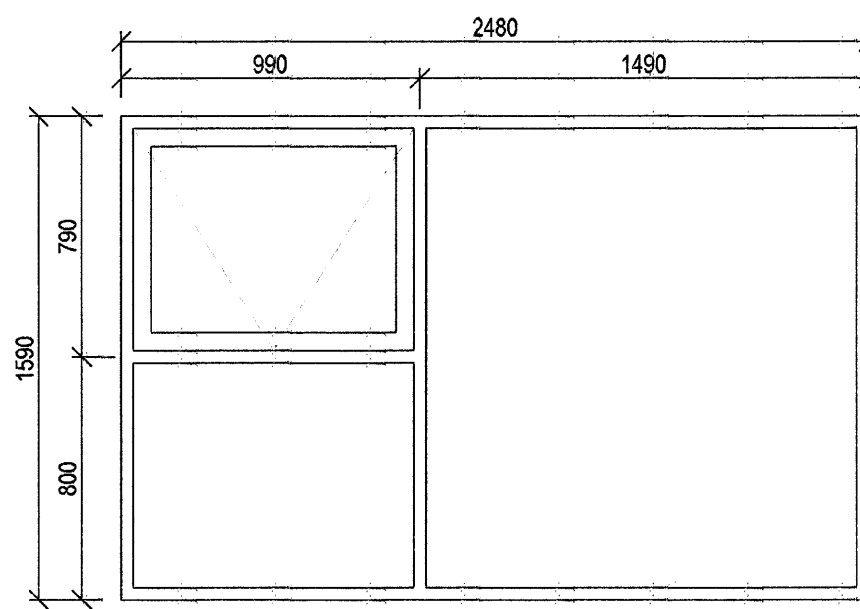
G-201, 14.stk
M= 1:25



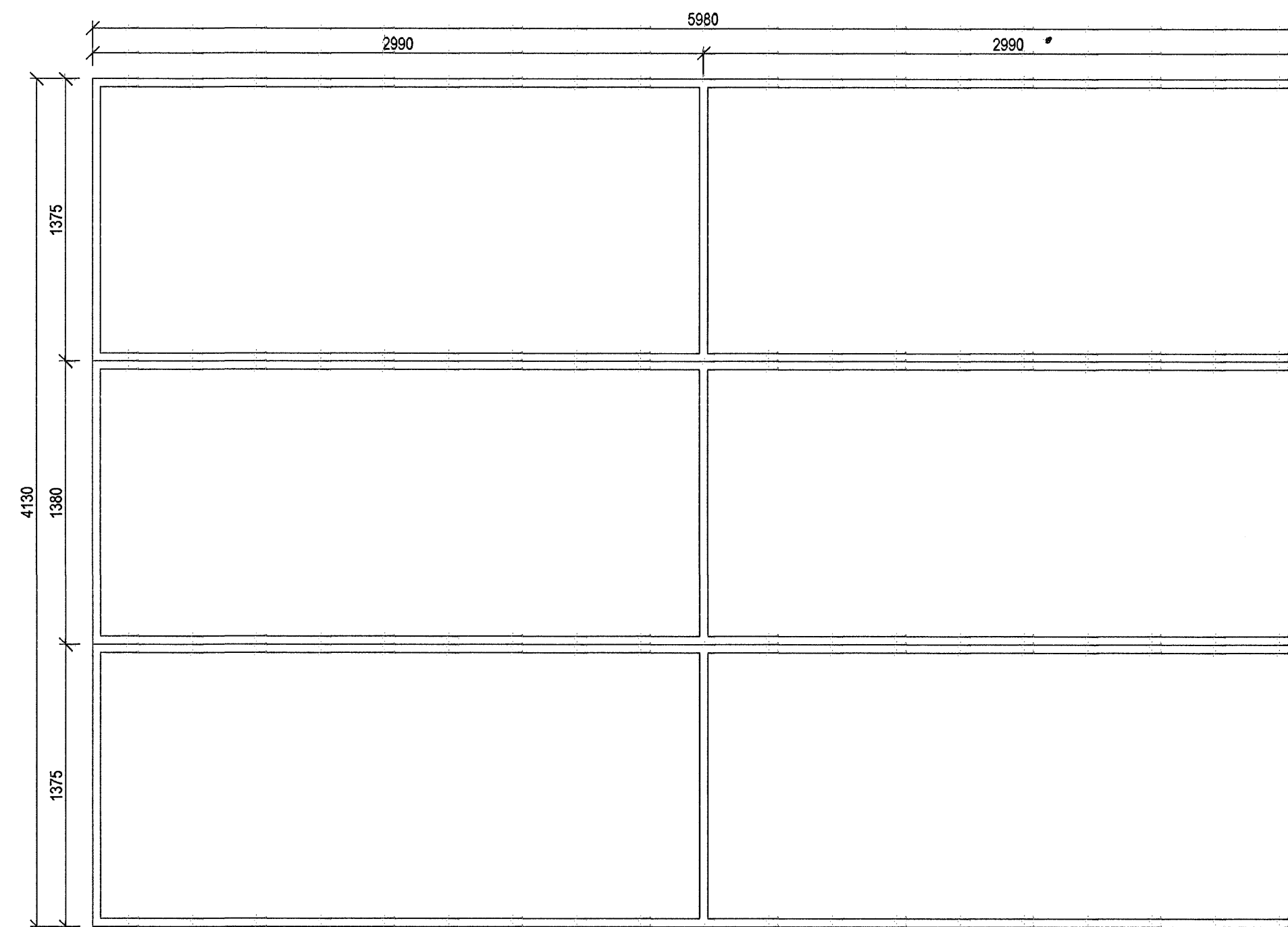
G-202, 2.stk
M= 1:25



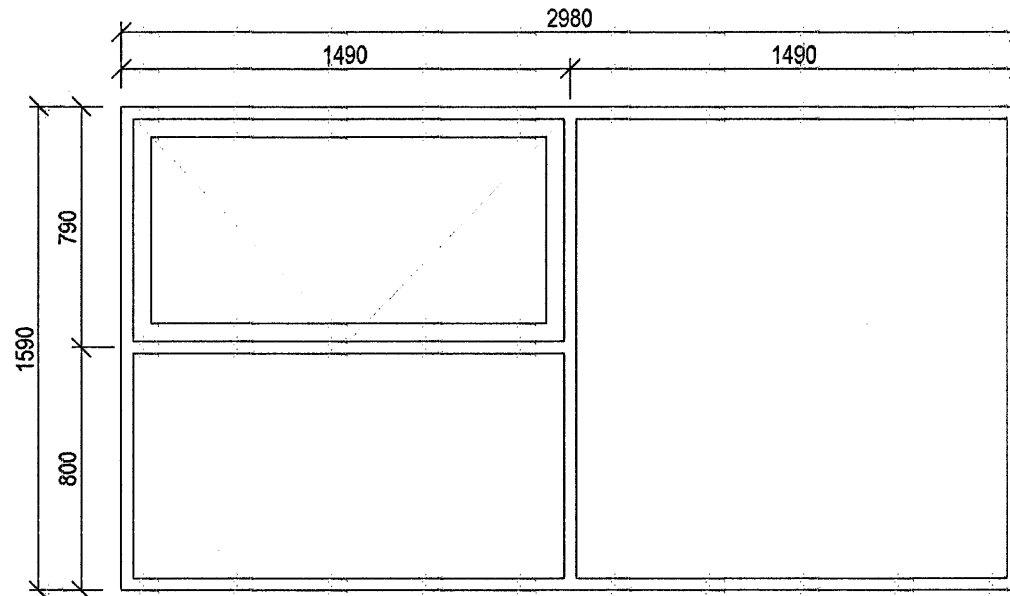
G-202-O, 2.stk
M= 1:25



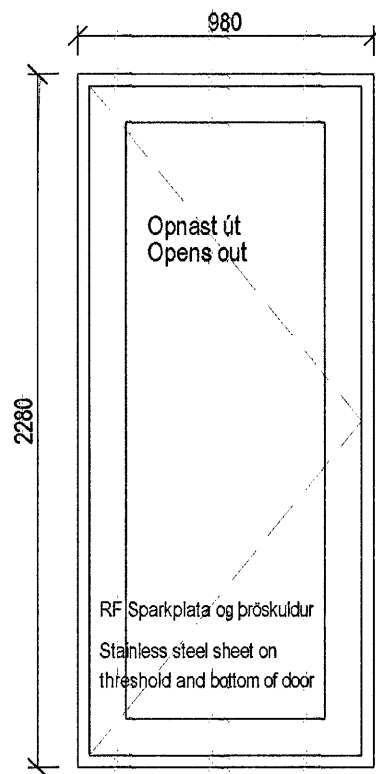
G-203, 2.stk
M= 1:25



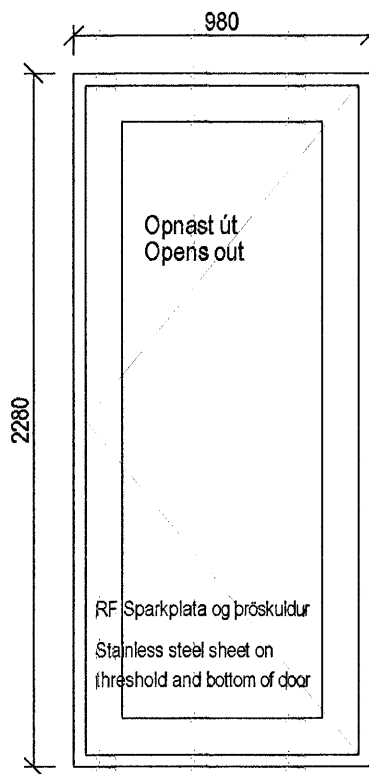
G-205, 1.stk
M= 1:25



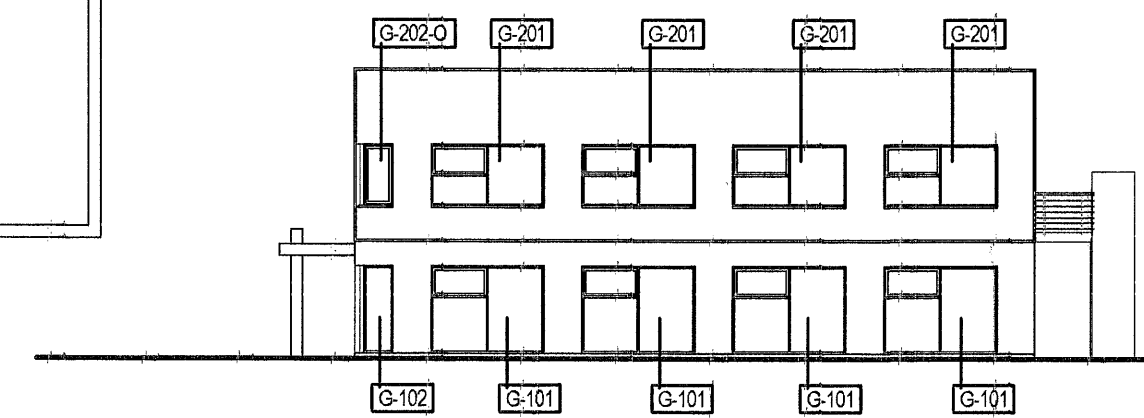
G-204, 2.stk
M= 1:25



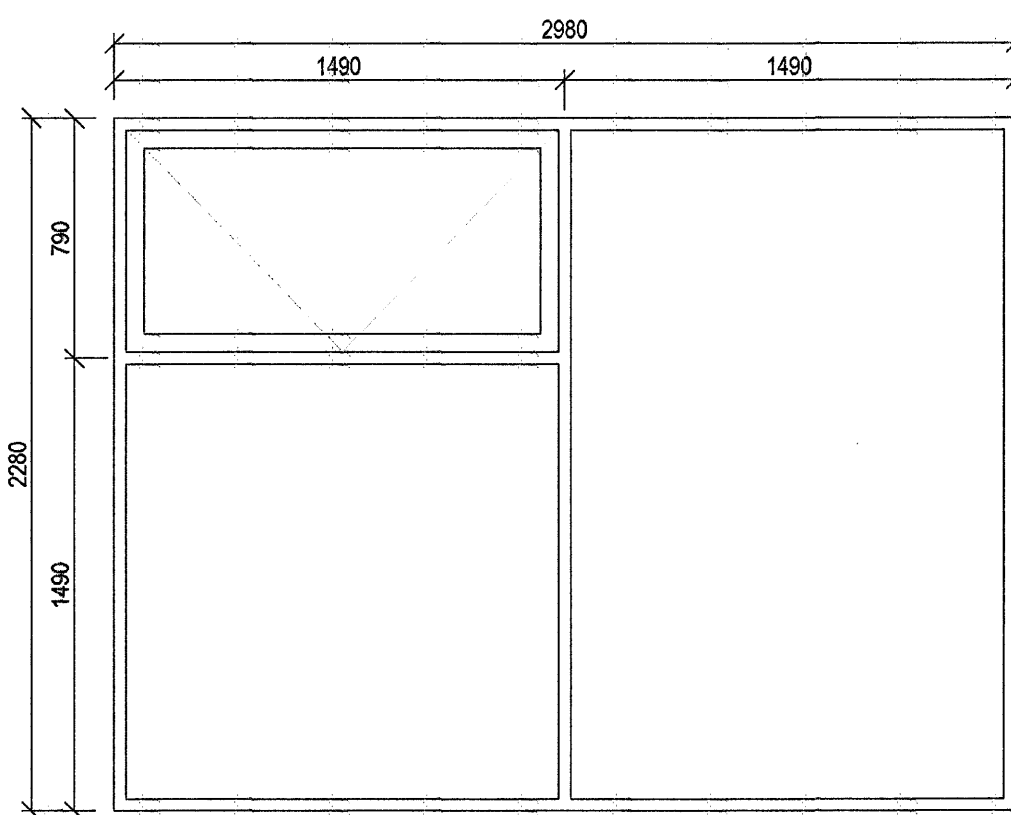
H-201, 1.stk
M= 1:25



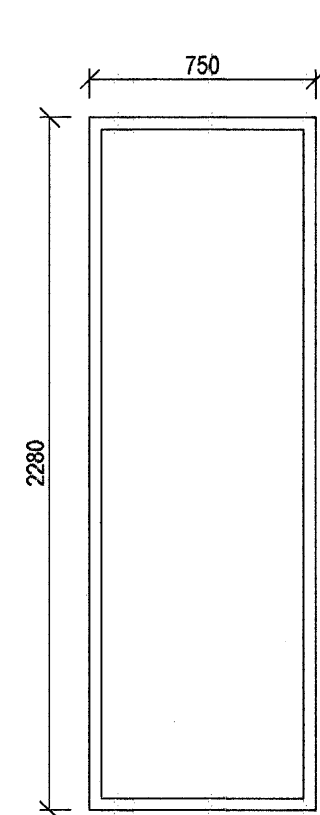
H-202, 1.stk
M= 1:25



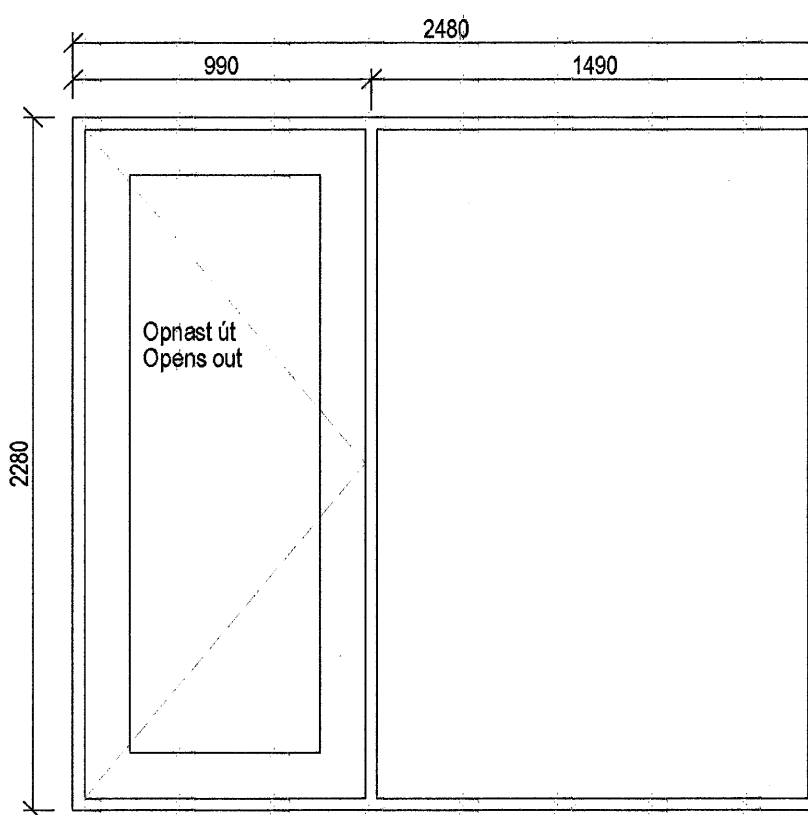
Suður
M= 1:200



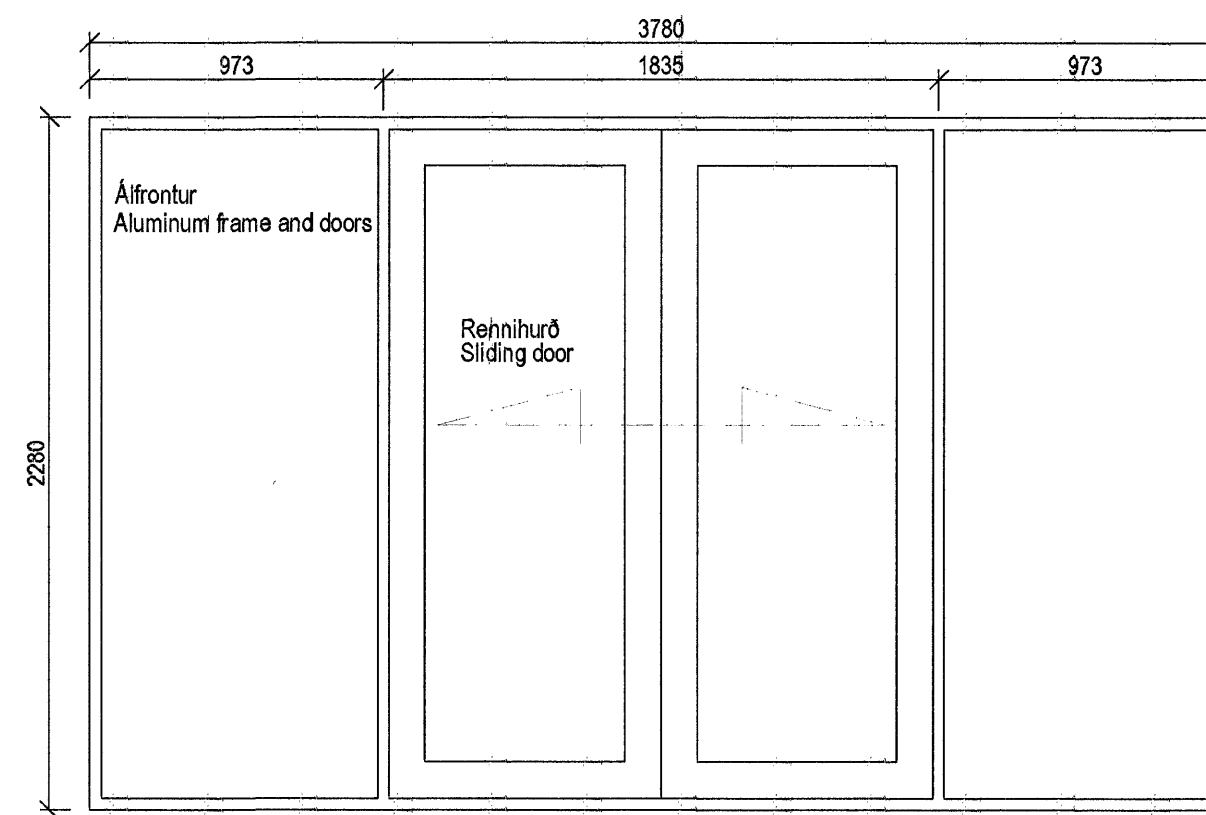
G-101, 14.stk
M= 1:25



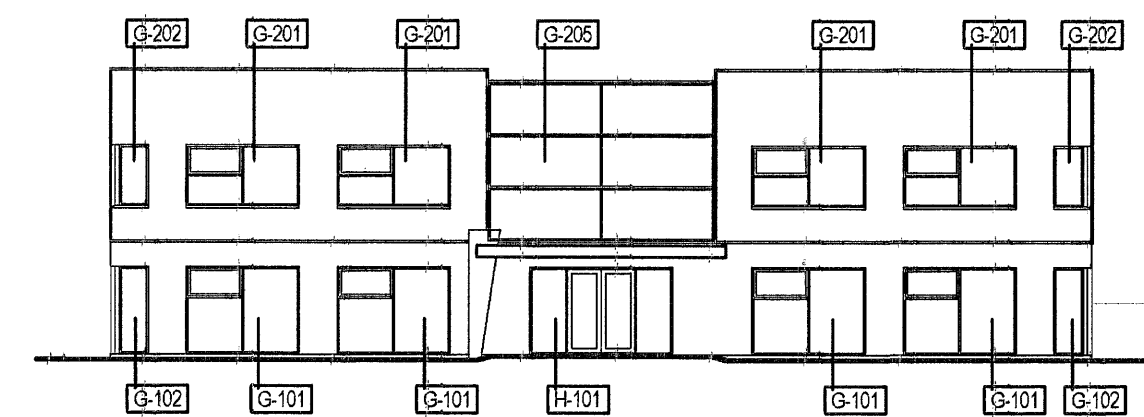
G-102, 4.stk
M= 1:25



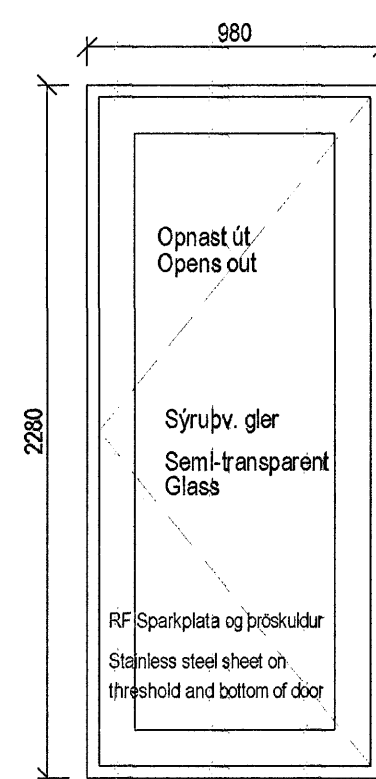
G-103, 2.stk
M= 1:25



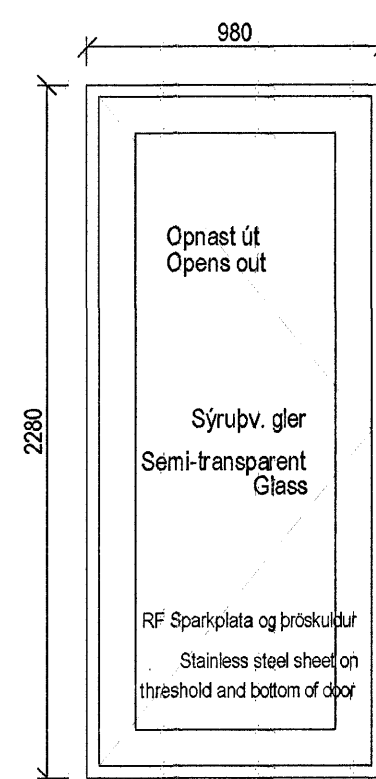
H-101, 1.stk
M= 1:25



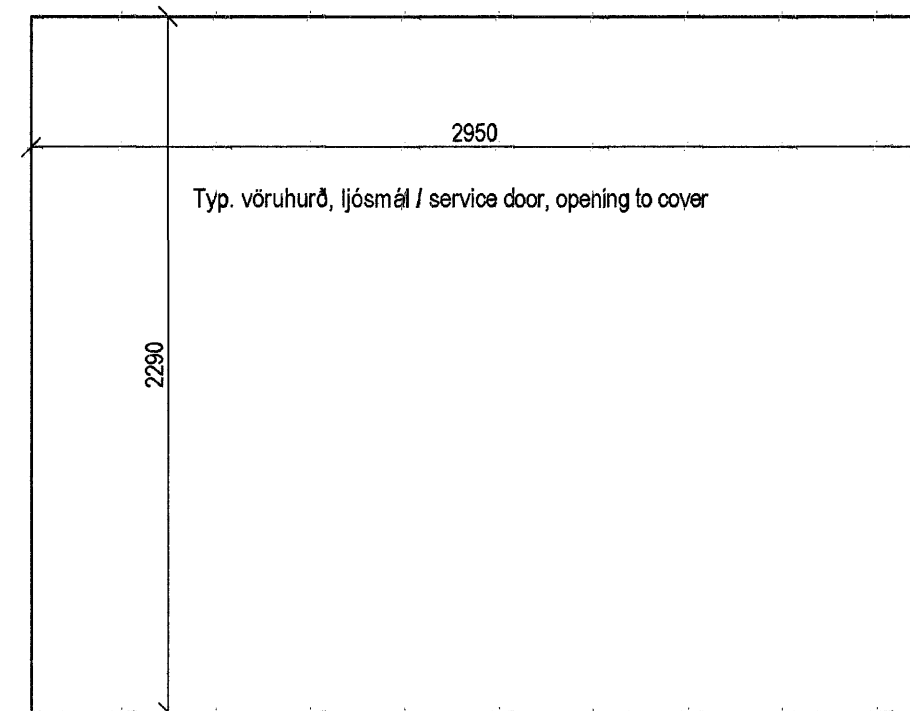
Vestur
M= 1:200



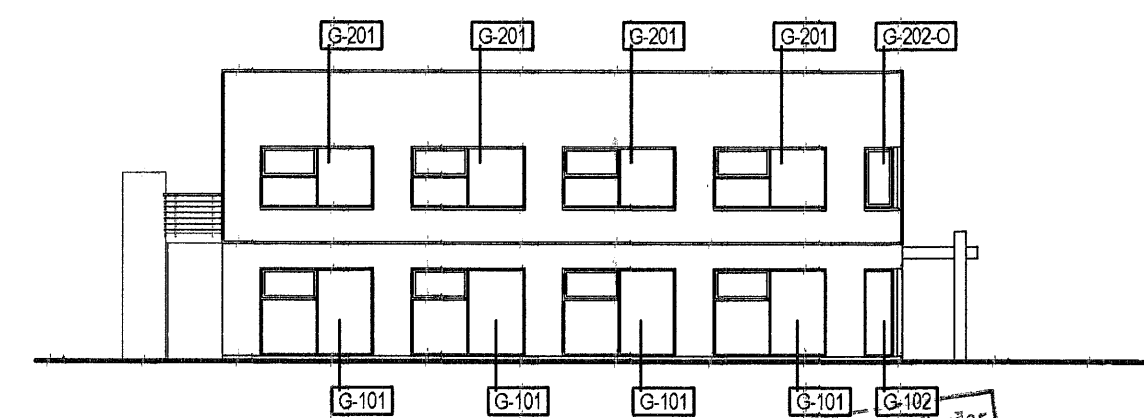
H-102, 1.stk
M= 1:25



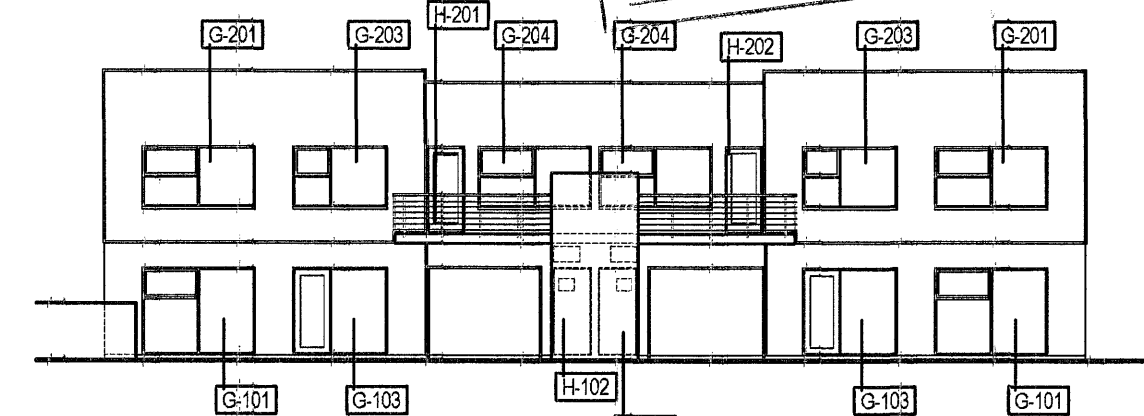
H-103, 1.stk
M= 1:25



Vöruhúð, 2.stk
M= 1:25



Norður
M= 1:200



Austur
M= 1:200

GLUGGAR OG HURDIR:

Gluggar eru timburgluggar / álklaðdir timburgluggar, opnanleg fólgr Oregon pine eða sambærilegu. Allt gler er "K" gler. Allt gler skal vera sólstoppglær. Það skal vera með sólarvörn af gerðinni "Stopsol supersilver" eða sambærilegt.

Öll málmyrki sem notuð eru í glugga og hurðir skulu vera með tæringavörn / ryöfri.

Gluggar reiknast fyrir 2,0 KN/m2 vindálag.

Gluggar skulu festir með Adjufix eða heildregnum ál-vinklum.

Litur á álkápu glugga: Ral 7016
Litur á hurðarbláð aðalhurðar: Ral 9002
Hreint ál í kórnum og póstum aðalinnangangshurðar
Litur á glugga og hurðarkórnum -inni: Ral 9010
Litur á vöruhúð Ral 7016

Einingis skal notast við CE merktu byggingarhluti.

Byggingatillit Hæmarfjórður
Alfreit þann
18.01.2006

GLÓRA
NORÐURHELLA 17
221 HAFNARFJÓRÐUR
GLUGGATEKNIING
11.1.2006