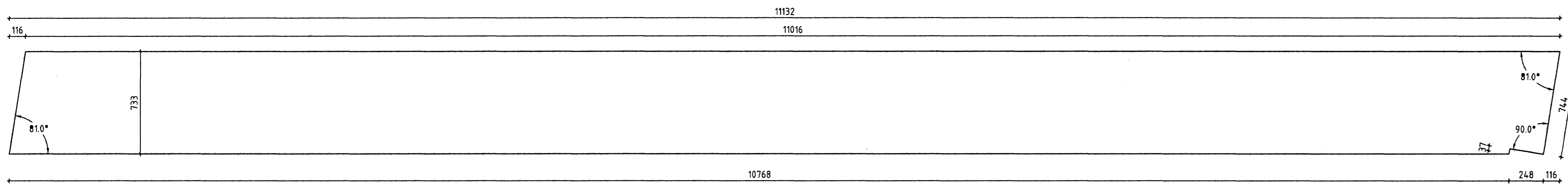
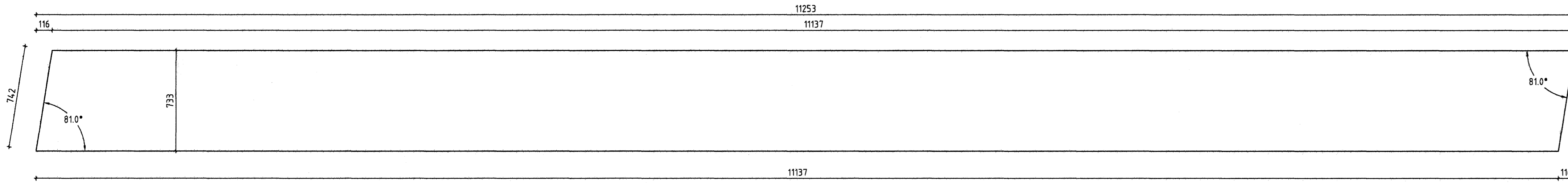


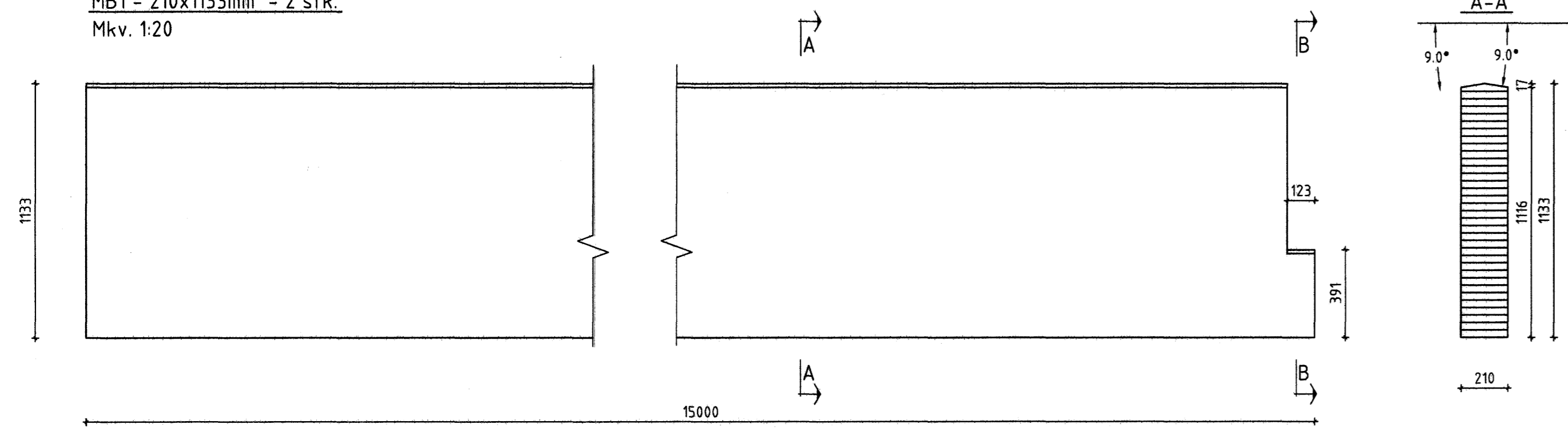
R1 - 160x733mm - 14 stk.
Mkv. 1:20



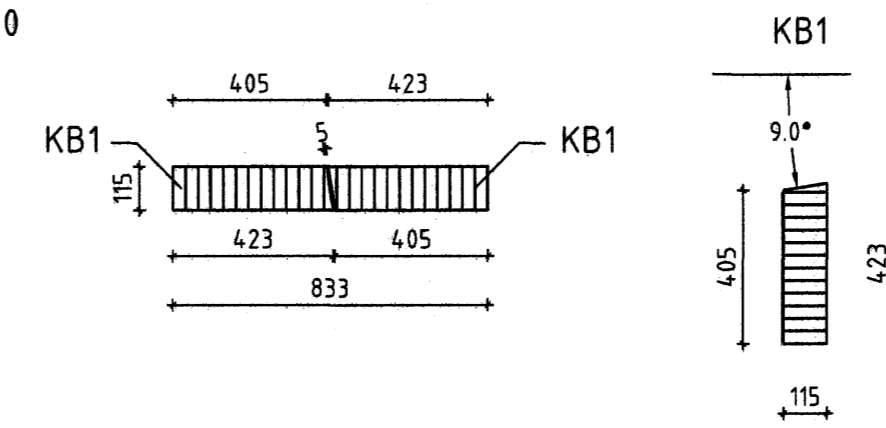
R2 - 115x733mm - 4 stk.
Mkv. 1:20



MB1 - 210x1133mm - 2 stk.
Mkv. 1:20

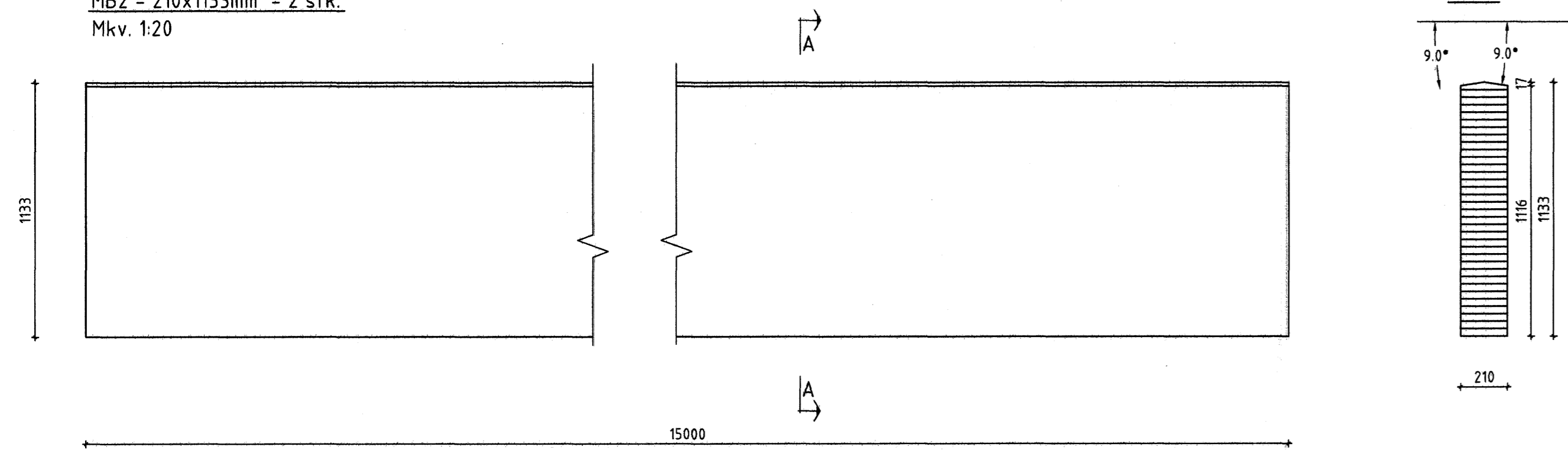


KB1 - 115x423mm - 4 stk. - L=7305mm
Sagað úr 115x833mm
Mkv. 1:20

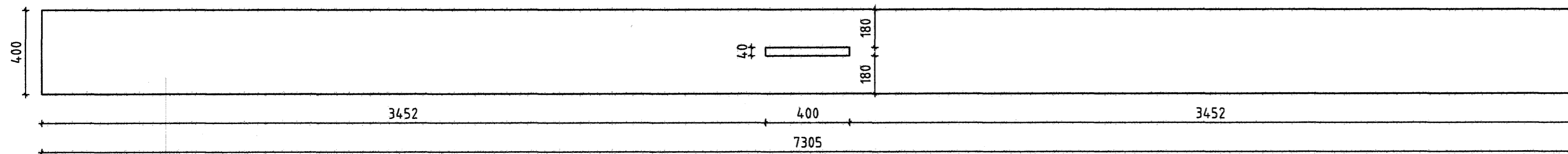


KB2 - 115x423mm - 12 stk. - L=7340mm
Sagað úr 115x833mm
Mkv. 1:20

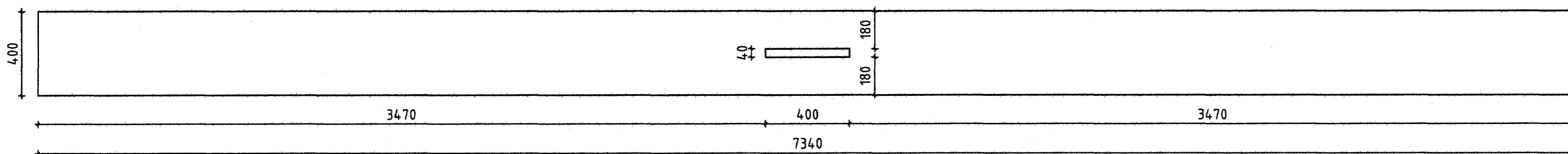
MB2 - 210x1133mm - 2 stk.
Mkv. 1:20



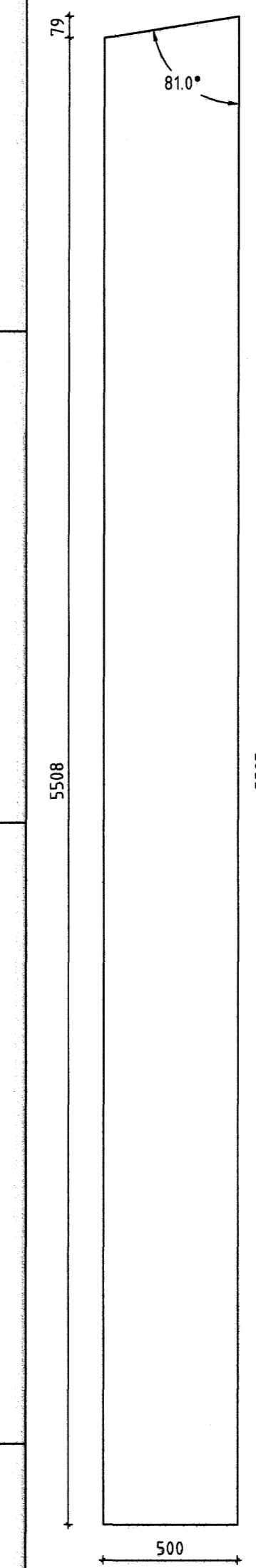
LB1.2 - 90x400mm - 4 stk.
Mkv. 1:20



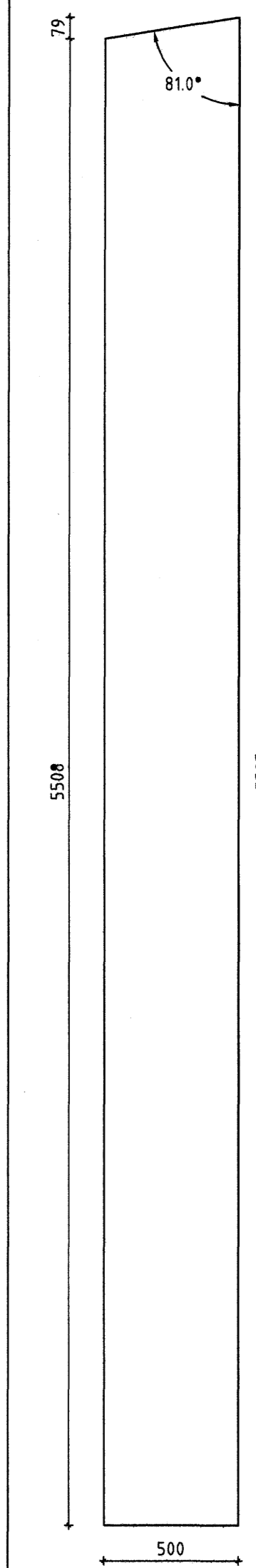
LB2.2 - 90x400mm - 12 stk.
Mkv. 1:20



S1 - 160x500mm - 14 stk.
Mkv. 1:20



S2 - 115x500mm - 4 stk.
Mkv. 1:20



Byggingatulltrúi Hámarkardar
Afgreitt þann
28 AUG 2006

Númer	Dags.	Skýring breytingar	Dr. af
ÖLL AFNÖT OG AFRITUN TEKNINGAR AÐ HLUTA EÐA Í HEILD ER HÁÐ SKRILEGGU LEYF LÍMTRÉVIRNETS EHF.			
Tæknideld Gylfartel 9, 112 Reykjavík Sími: 530 6009 Fax: 530 6019		MKV. 1:20 á A1 DAGS. 6.04.2006 VERKNR. 2005070027 ÚTGÁFA NR. 01	NR. TEKNINGAR 301
HEITI VERKS: Steinhella 17 - B		NAFN HÖNNUBAR Bjarni Ingibergsson Byggingatæknifræðingur 030861-2729	DAGS. ÁRITUNAR 18.8.06
HEITI TEKNINGAR Límtré framleidsluteikningar - 01		ÁRITUN HÖNNUBAR ÁRITUN SAMRÆM HÖNNUBAR	DAGS. ÁRITUNAR 22.9.06