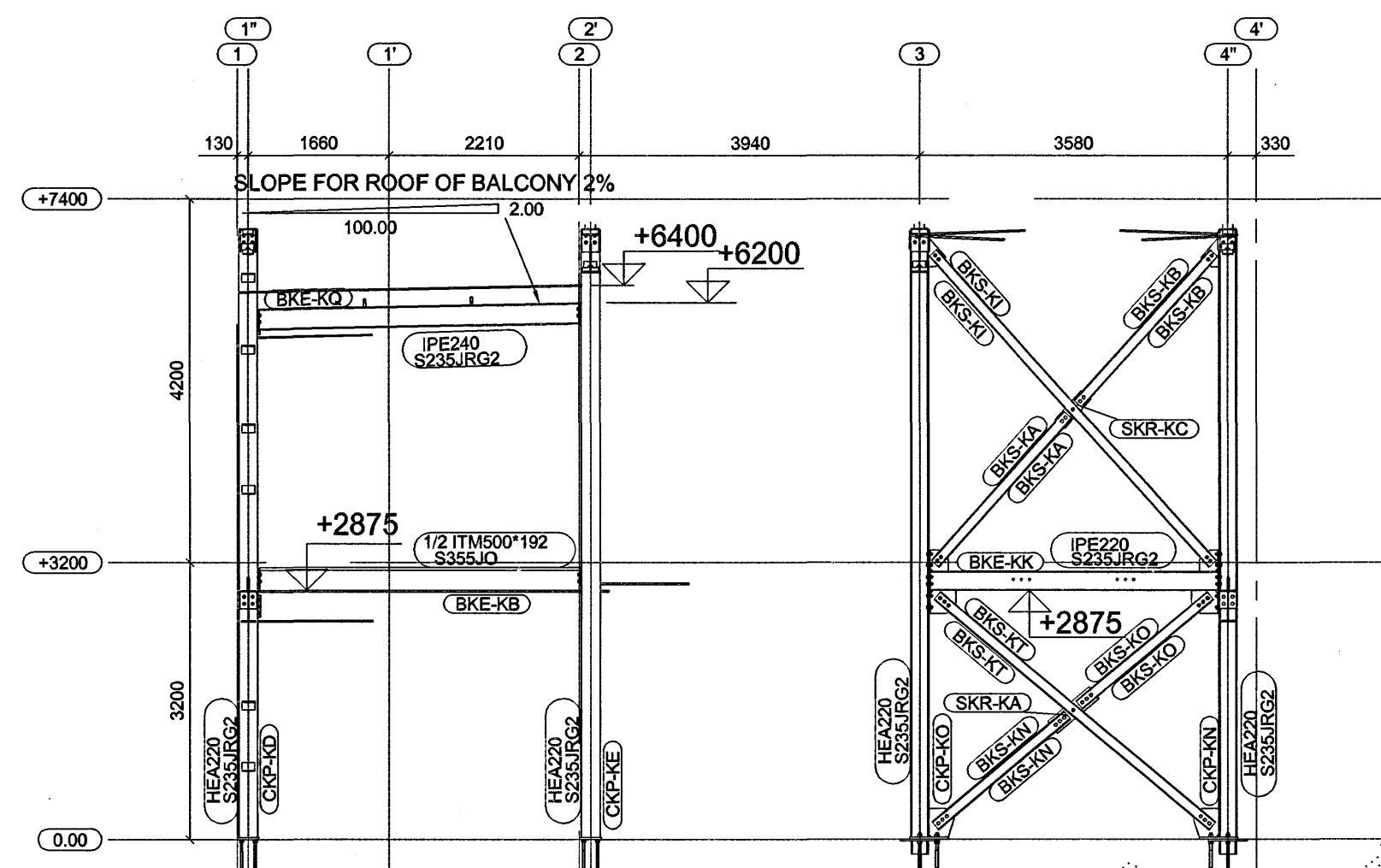
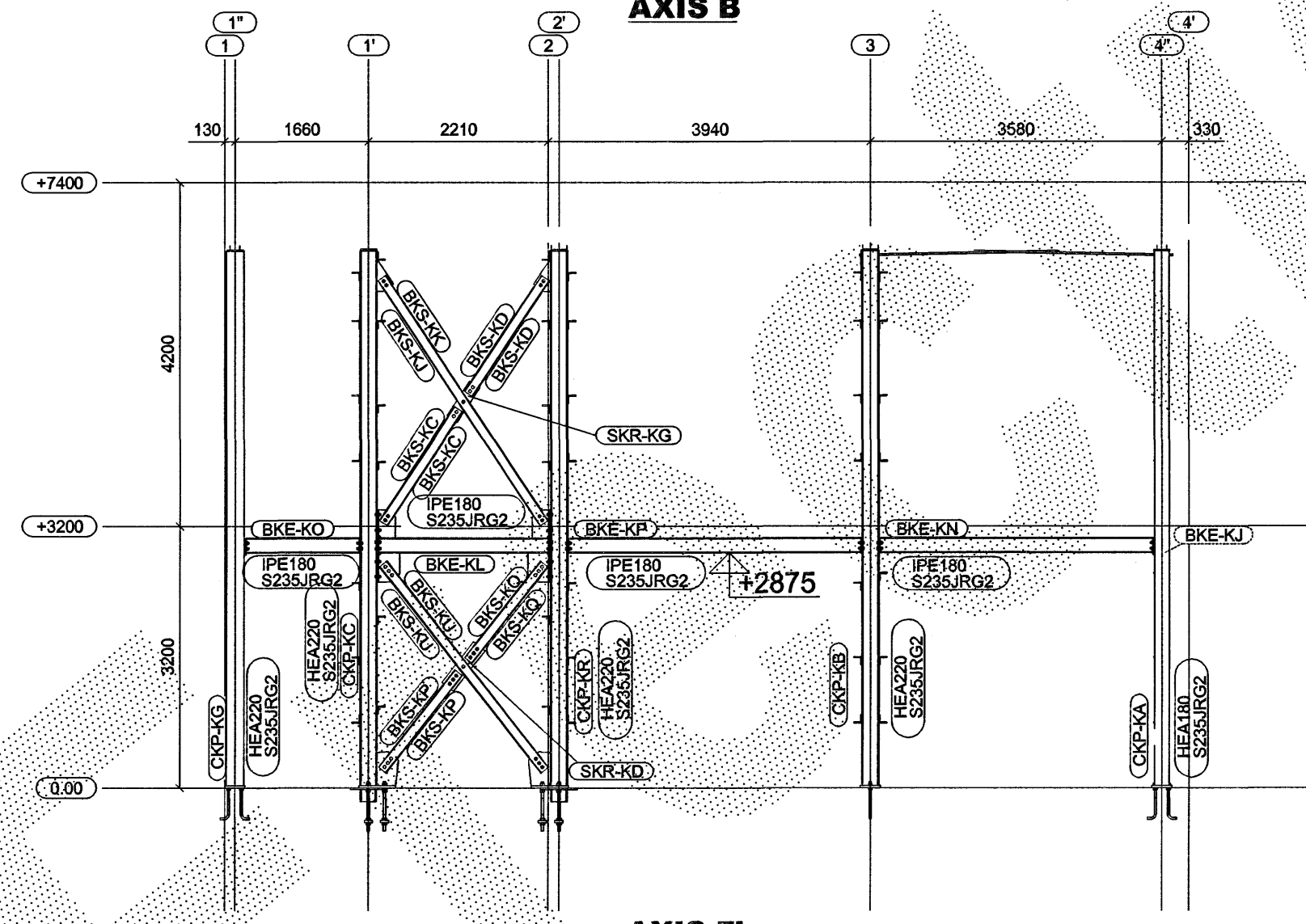


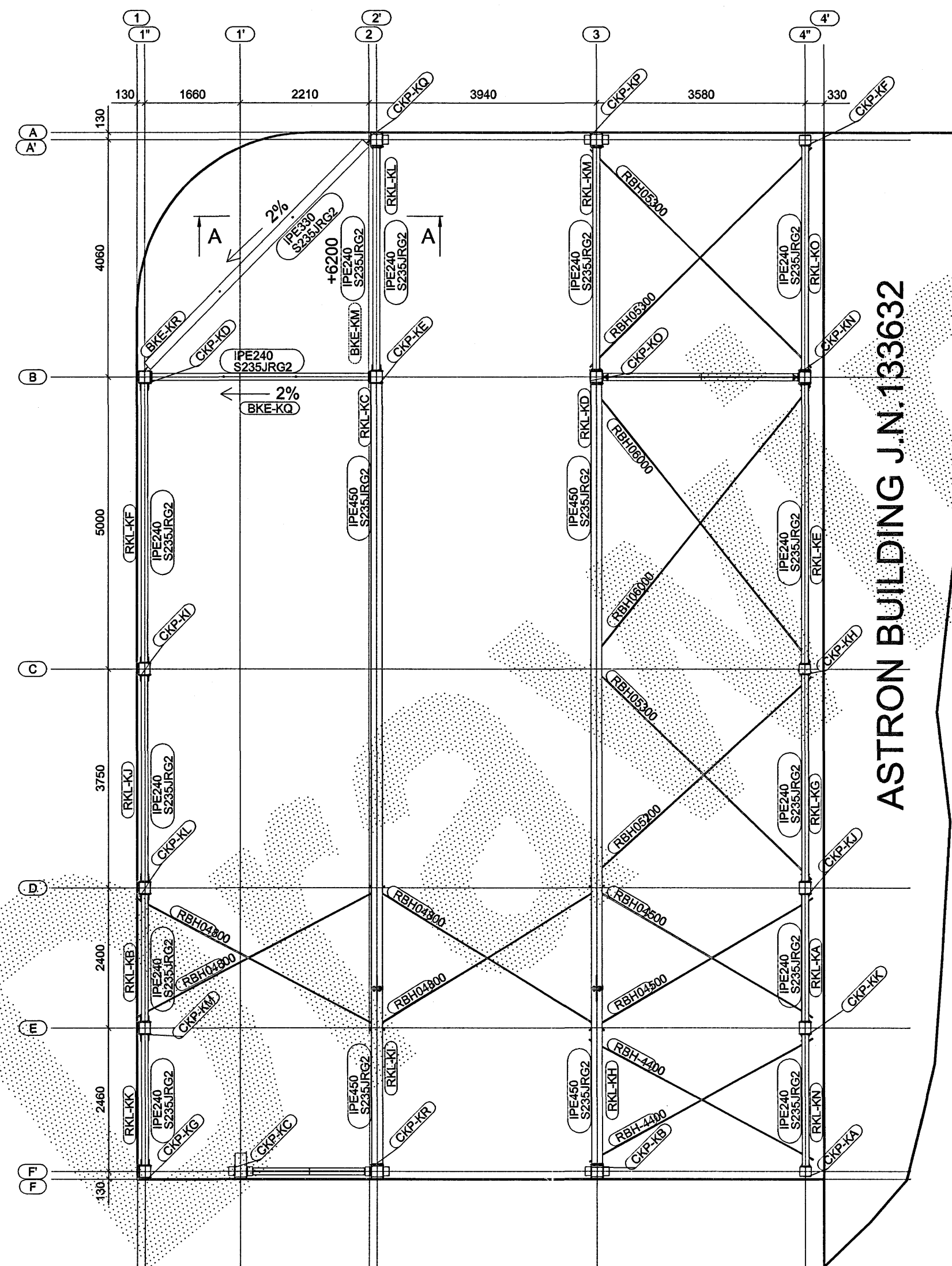
AXIS A'



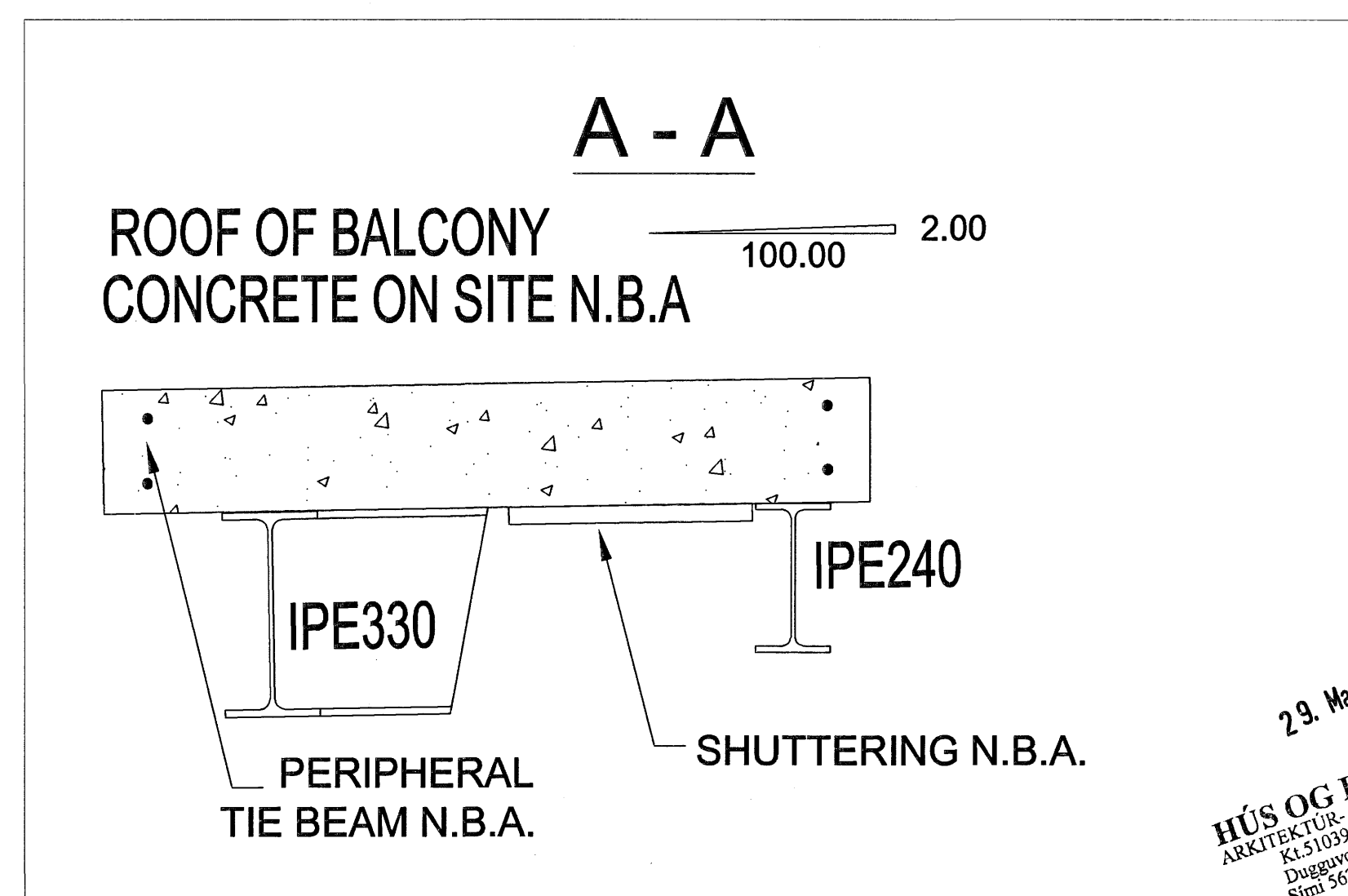
AXIS B'



AXIS F'

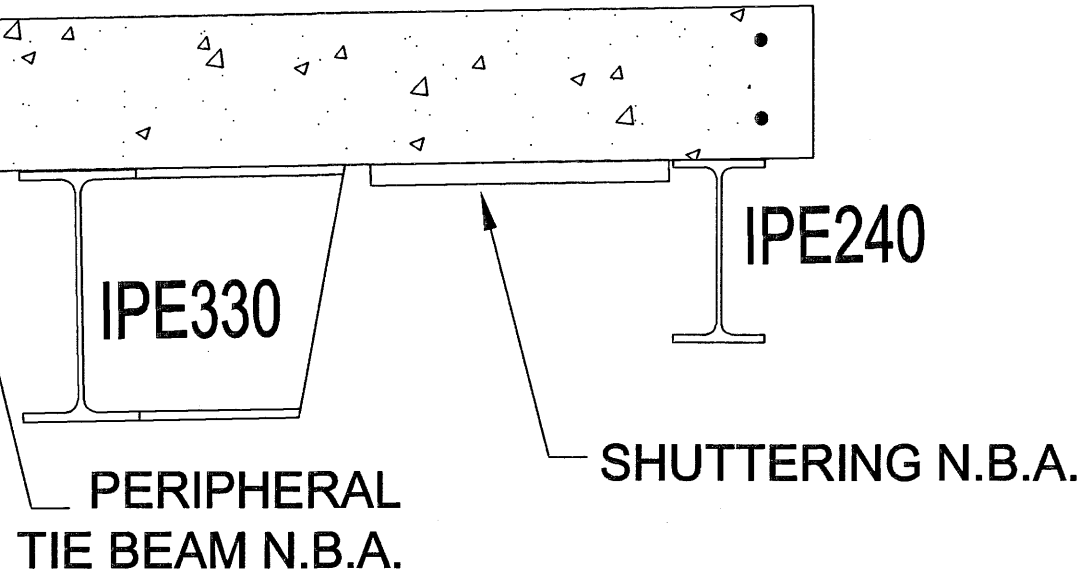


ROOF +7400



ROOF OF BALCONY  
CONCRETE ON SITE N.B.A.

A - A



PERIPHERAL TIE BEAM N.B.A.

29. Mars 2007  
**HÚS OG RÁÐGJÖF ehf.**  
 ARKITEKTUR OG VEKFRÆÐISSTOFA  
 K. 510393/2529 • Vsk. 7600  
 Duggavegur 17, 104 Reykjavík  
 Sími 562 2220 • Fax 562 2430

Unless noted different :  
 All BSK- bolts must be installed with the  
 'TURN OF THE NUT' method, as described  
 in the erection manual.  
 All other must be installed 'SNUG TIGHT'

**ATTENTION**

The complete building must be erected according to the erection documents and manuals as provided by ASTRON and all applicable local codes and standards. Moreover, we draw your attention to the points below as they are most critical for the building stability :

1. Correct amount, type, position and installation of flange bracings (LF- ; XLF- ) in roof and walls.
2. Double nuts on the wind bracing rods and wind bracing being fastened.
3. Structural bolts in grade 10.9 must be assembled with structural nuts and washers in the same 10.9 grade only. Place structural bolts 10.9 grade as indicated on drawings.
4. Correct fastening of all the structural bolts using the method as specified by ASTRON
5. Correct number of all purlins and girts spacers (CL 00025, CL 00021...).
6. Correct number and location of double purlins.
7. Correct positioning of the sag rods (RSG..) and cleats (CL 00140).

A	J.T.	ADD PARTNUMBERING	12/03/2007
INDEX	NAME	MODIFICATION	DATE

Remarks:

- Primary bolted connections:
- 1) Except stability connections, shim plates can be distributed uniformly at each end of the beam.
  - 2) For the tightening of the bolts to the torque, see table below.

Torque for 100% tightened bolts (1.0 Pv) in daNm.		BSF	BSK
Bolt	M16 M20 M22 M24 M27 M30	EN ISO 4017 (8.8) EN ISO 7090	DIN 6914 (10.9) DIN 6916 (295 HV) DIN 6915 (class 10)
10.9	25 45 65 80 125 165	EN ISO 4032 (class 8)	Samþykkt þann 19. JULÍ 2007

- Notes:
- 1) List of drawings in appendix.
  - 2) Documentations to be consulted:  
- Technical and erection manual.
  - 3) Design and drawing of foundation by a local engineering department.
  - 4) Table of the loads: see design calculation.
  - 5) All dimensions in millimeters.
  - 6) All the primary bolts, except indicated otherwise, are galvanized and tightened according the "snug tight" method.
  - 7) Steel quality (unless indicated otherwise):  
- Plates: S355J2G3.  
- Profiles: S235JRG2.
  - 8) Any anomaly will be pointed out to Astron immediately, before doing any modification on site.
- Legend:  
 1) \* = to adapt on site.  
 2) N.B.A. = Not By Astron.

Building location: Byggingulltrúinn / Hafnarfjörð  
 F.h. Sigurbjartur Halldórsson  
*Burðarvirki veggja í áslinum A', B, F' og grunnmynd af Burðarvirki þaks.*  
 Details Smíð A-A í þak yfir svæðum Selhella 9, Hafnarfjörð  
 Building site address: Selhella 9, Hafnarfjörð  
 ADDRESS

ASTRON BUILDINGS SA  
 Rue d'Eitelbruck, P.O. Box 152  
 L-9202 Diekirch Luxembourg  
 Tel : (00 352) 80 291 1  
 Fax : (00 352) 80 291 442  
 E-Mail : info@astron.biz  
 www.astron-buildings.biz

ENGINEER: M. Hajduk  
 TEL: 00 420 / 581 250 312  
 DRAFTMAN: J. Tomesek  
 TEL: 00 420 / 581 250 315  
 SCALE: 1/75  
 REF. JOB NUMBER:

06/02/2007  
 06/02/2007  
 SIZE: A1

BID: MEST  
 PROJECT: FEDEX, Selhella 9  
 WALLS AXES A', B, F' AND ROOF

133634 WP-1