

**ATTENTION**

- Foundations must be designed by a qualified foundation engineer.
- Astron has calculated the diameter and the number of anchor bolts required at each column location based on the column reactions and the mechanical properties of the steel from which the anchor bolts are produced.
- It is the responsibility of the foundation engineer to verify that the anchor bolt details, embedment length and the placement of steel reinforcement in the concrete is adequate to transfer the column loads to the foundation.
- Astron Buildings assumes no responsibility for verifying the adequacy of the foundation design.

**ATTENTION**

The complete building must be erected according to the erection documents and manuals as provided by ASTRON and all applicable local codes and standards. Moreover, we draw your attention to the points below as they are most critical for the building stability:

- Position of the anchor bolts,
- Fastening of the anchor bolts nuts, once the columns

29. Mars 2007  
**HÚS OG RÁÐGJÖF** ehf.  
 ARKITEKTUR OG VERKFRÆÐISSTJÓRA  
 KÍLÍSGÍFT 25.10 Vsk. 11500  
 Drögvegur 11, 104 Reykjavík  
 Sími 562 2420 • Fax 562 2430  
*Jelga A. Samuelsen*  
 framkvæmdarstjóri

Rev	Name	Commentary	Date
D	J.T.	Add table with erection notes	12.03.07
C	J.T.	Add axis 2', nuts and washers	06.02.07
B	J.T.	Changes in windbracing details	31.01.07
A	J.T.	Changes after approval	30.01.07

**Building description summary:**

- Primary structure finish (type, color, RAL): F80 GREY
- Secondary structure finish (type): GAL
- Roof panels (type, color, RAL): Hoesch E40(th.0.75mm) : DLA G31 RAL9002
- Exterior wall panels (type, color, RAL): Hoesch ML60va PXA H21 RAL9006
- Inside wall panels (type, color, RAL): ---
- Gutter and rake trim color (color, RAL): ---
- Downspouts color (color, RAL): ---
- Roof insulation: ---
- Wall insulation: ---
- Floor: N.B.A.

Notes about welding on site:  
 Welding are executed by a certified welder!  
 111/ EN 25817 - C / EN ISO 6947 - PB  
 EN 499 - E 38 2 B 12 H 10  
 See erection manual for additional informations.

**Samþykkt bann**  
 19 JULI 2007  
 Byggingfultrúinn | Hafnarfröð  
 F.h. Sigurbjartur Halldórsson

**Notes:**

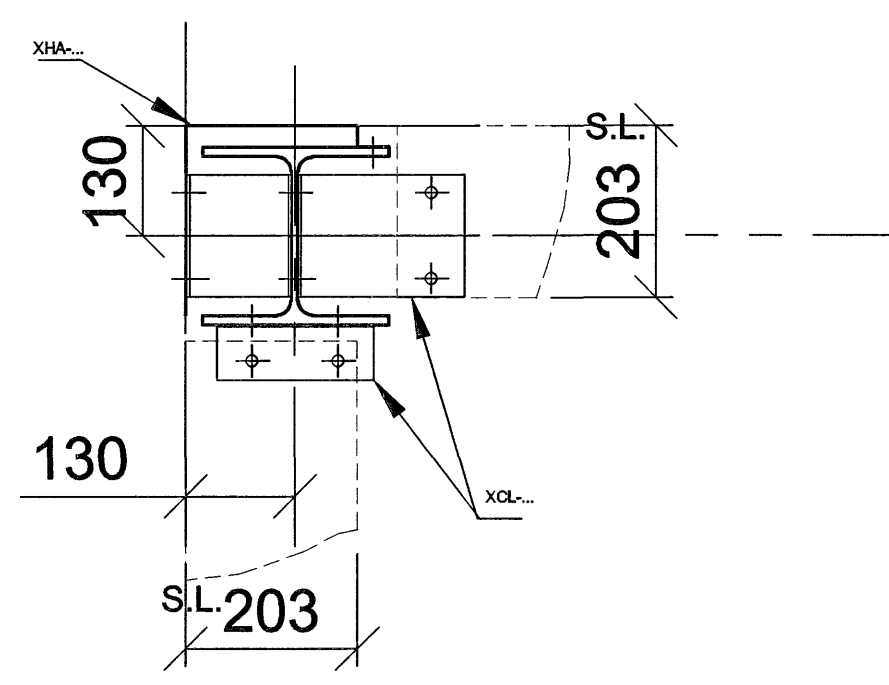
- List of drawings in appendix.
- Documentations to be consulted:  
 -Technical and erection manual.
- Design and drawing of foundation by a local engineering department.
- Table of the loads: see design calculation.
- All dimensions in millimeters.
- All the primary bolts, except indicated otherwise, are galvanized and tightened according to the DIN 18800 part 7 (8.5).
- Steel quality (unless indicated otherwise):  
 -Plates: S355J2G3.  
 -Profiles: S235JR.
- Any anomaly will be pointed out to Astron immediately, before doing any modification on site.

**Legend:**

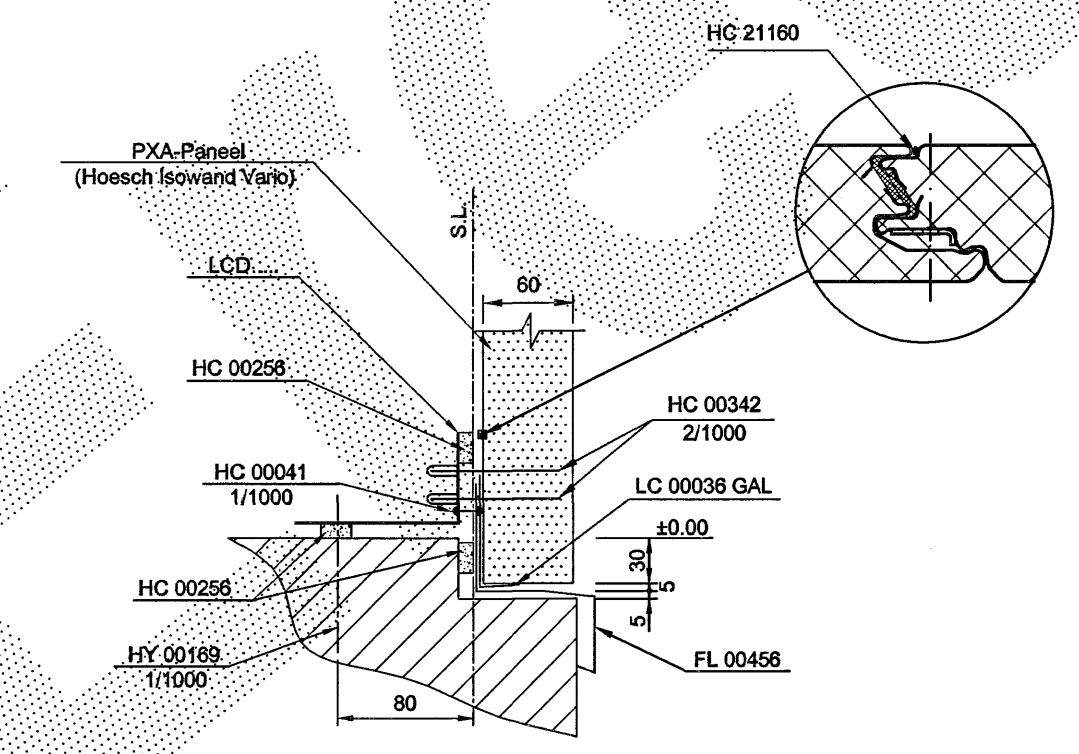
- \* = to adapt on site.
- N.B.A. = Not By Astron.

**Building location:**  
*Grummynrol sem sýnir staðsetningu festibolta í umhverfi stöðvar.*  
*Selhella 2, Hafnarfröð*  
 Building site address:  
 Iceland

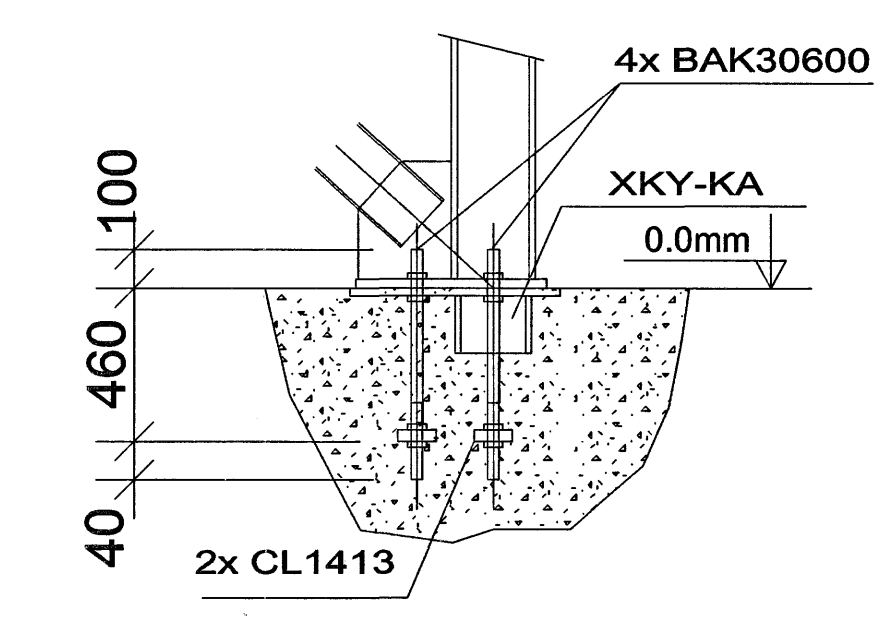
**TYPICAL CONNECTION FOR SECONDARY**



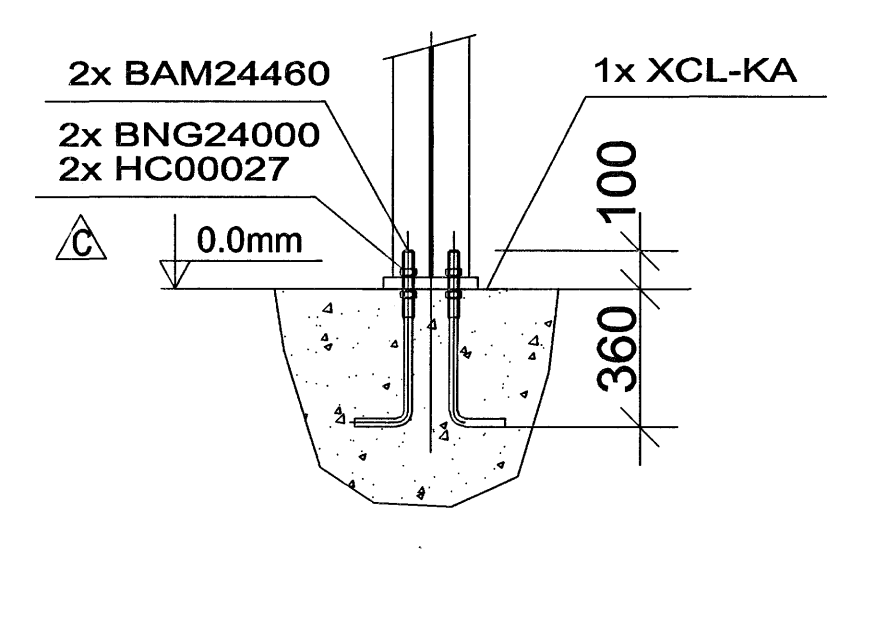
**BOTTOM DETAIL**



**A - A**



**B - B**



ANCHOR DIMENSION					BAM	BAK
PN	DIAM.	L	H	QUALITY		
BAM24460	24	460	80	S400		
BAK30600	30	600	100	10.9		

**ASTRON BUILDINGS SA**  
 Rte d'Etelbruck, P.O. Box 152  
 L-9202 Diekirch Luxembourg  
 Tel : (00 352) 80 291 1  
 Fax : (00 352) 80 291 442  
 E-Mail : info@astron.biz  
 www.astron-buildings.biz

**Ing.: M.Hajduk**  
 TEL: 00420 / 581 250312  
 26/01/07

**Draft.: J.Tomesek**  
 TEL.:00420 / 581 250315  
 26/01/07

**C/D: MEST**  
**PROJ: FEDEX, Selhella 9**

Scale: 1:75 size A1  
 REF. JOB NUMBER:  
**133634 AB-1** REV D