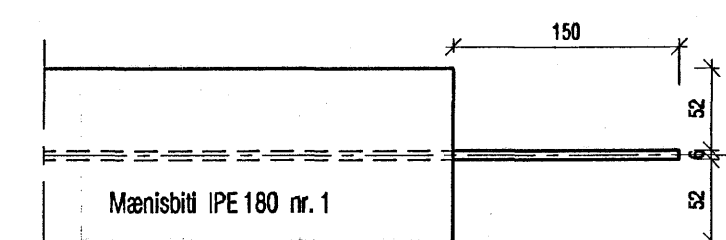
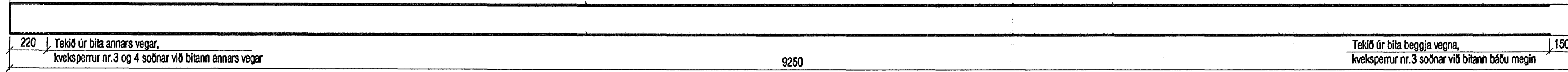
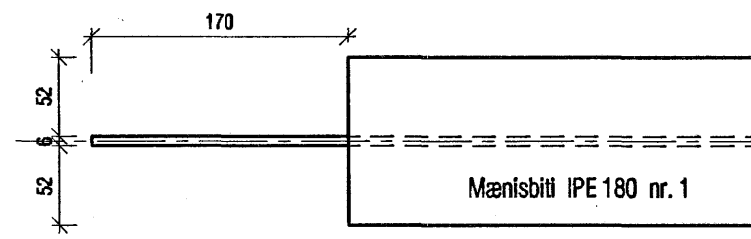


Séð ofan á bita, mkv. 1:5
tekið úr annars vegar

Mænisbiti nr. 1, IPE 180, 1 stk.
mkv. 1:20

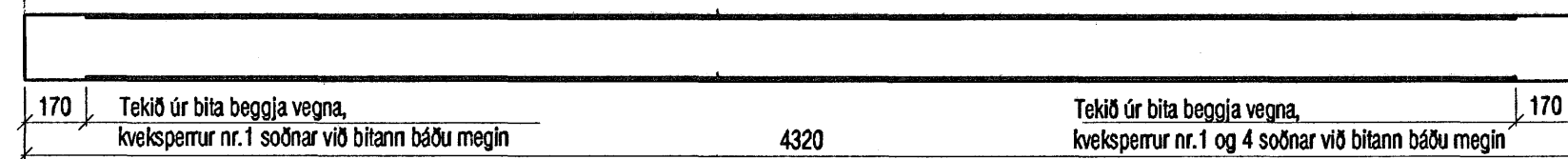


Séð ofan á bita, mkv. 1:5

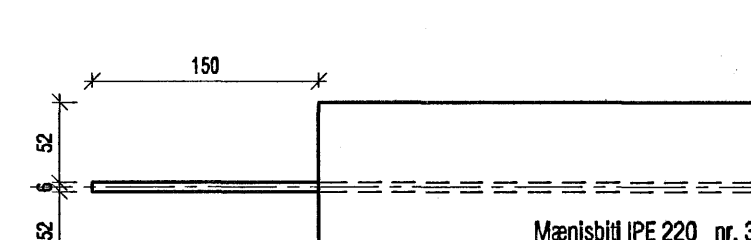
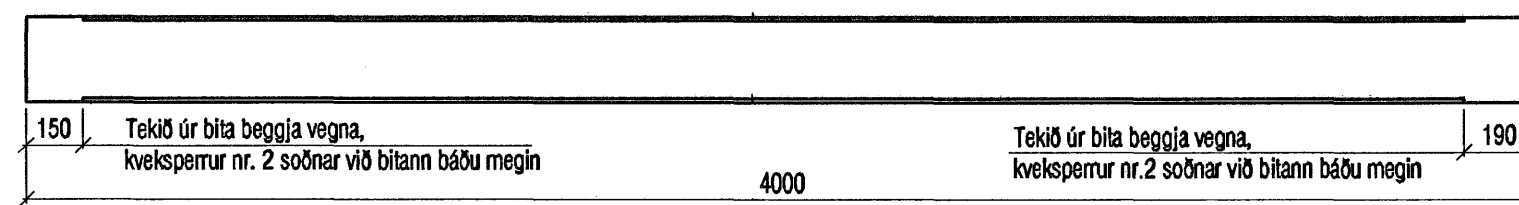


Séð ofan á bita, mkv. 1:5

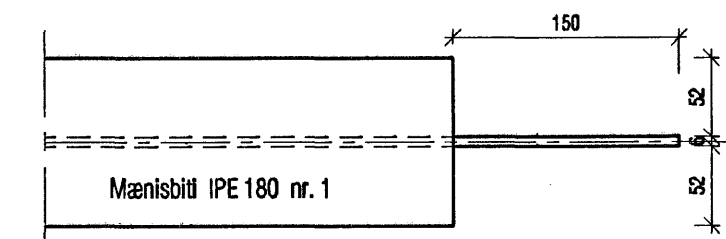
Mænisbiti nr. 2, IPE 180, 1 stk.
mkv. 1:20



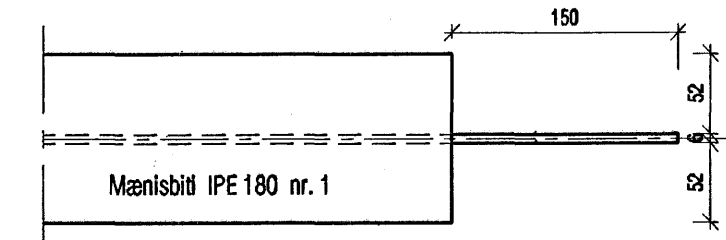
Mænisbiti nr. 3, IPE 220, 1 stk.
mkv. 1:20



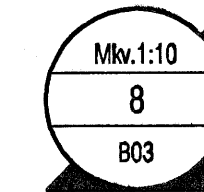
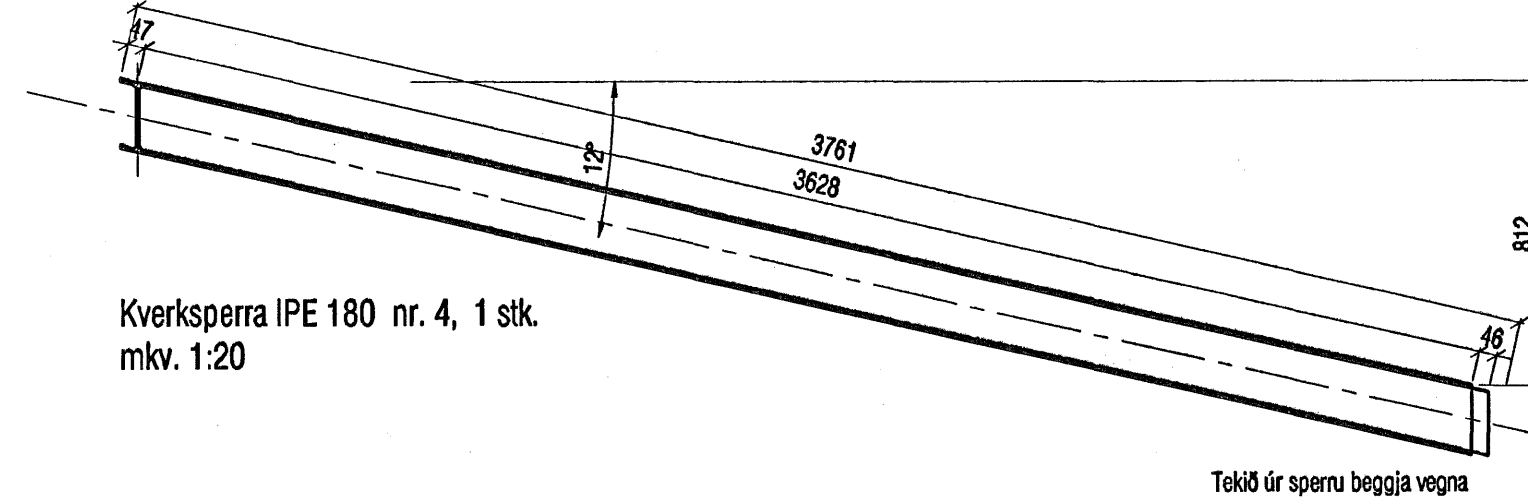
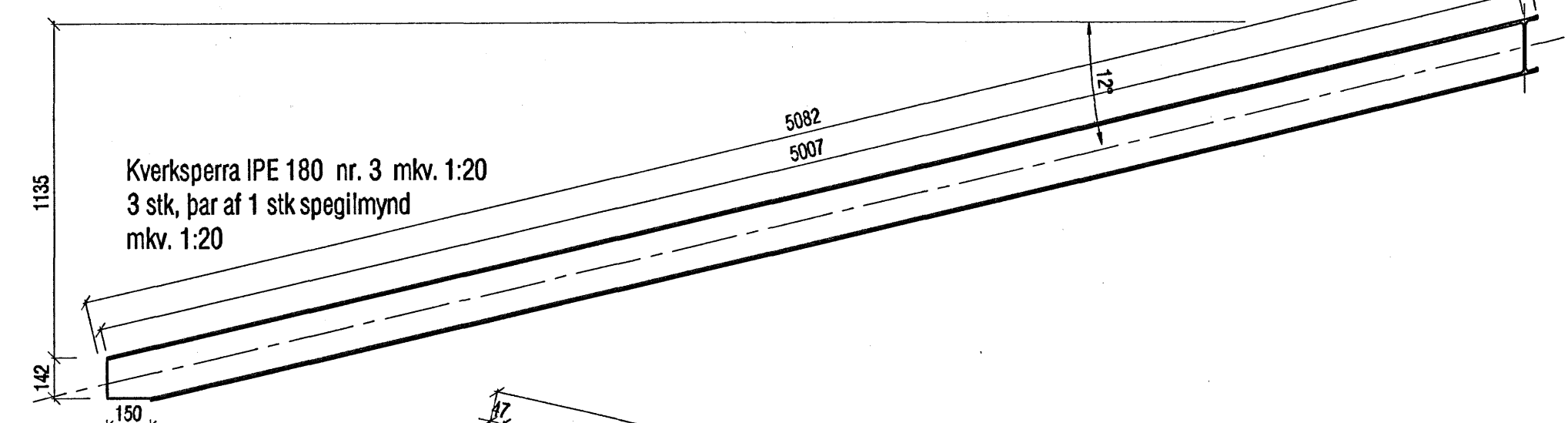
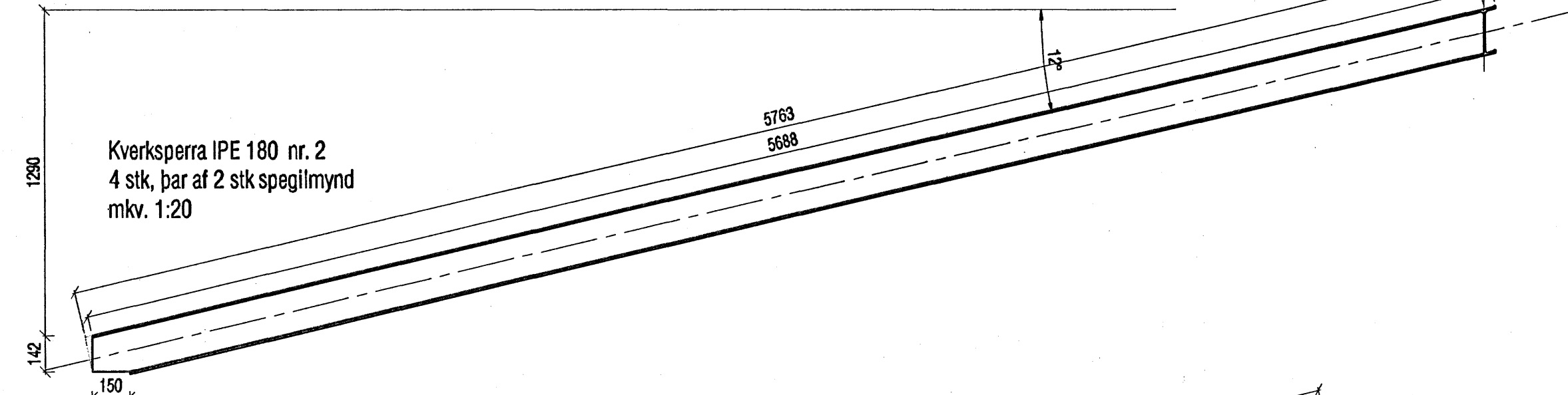
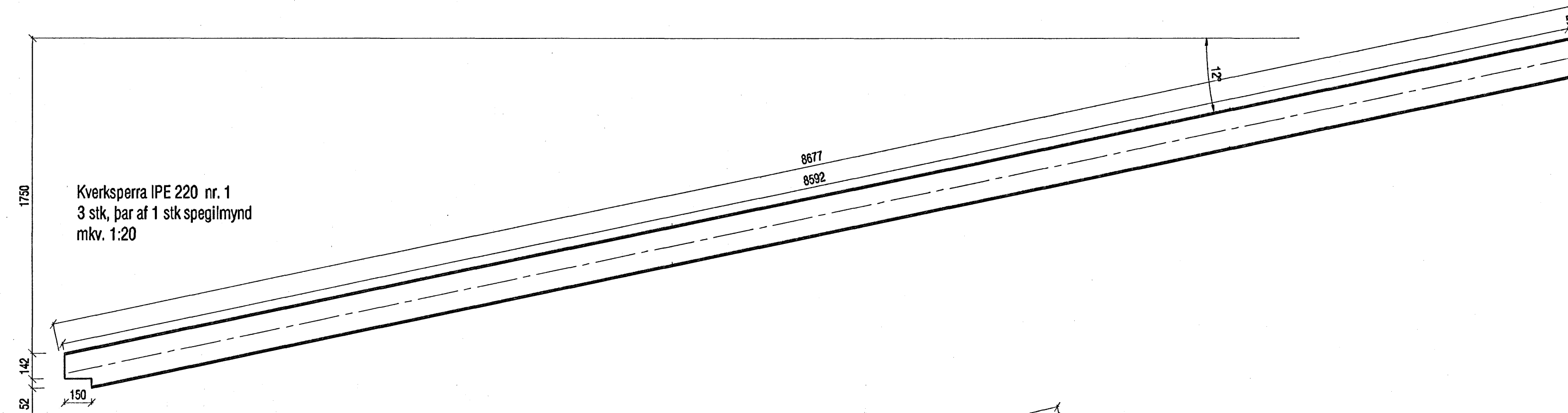
Séð ofan á bita, mkv. 1:5



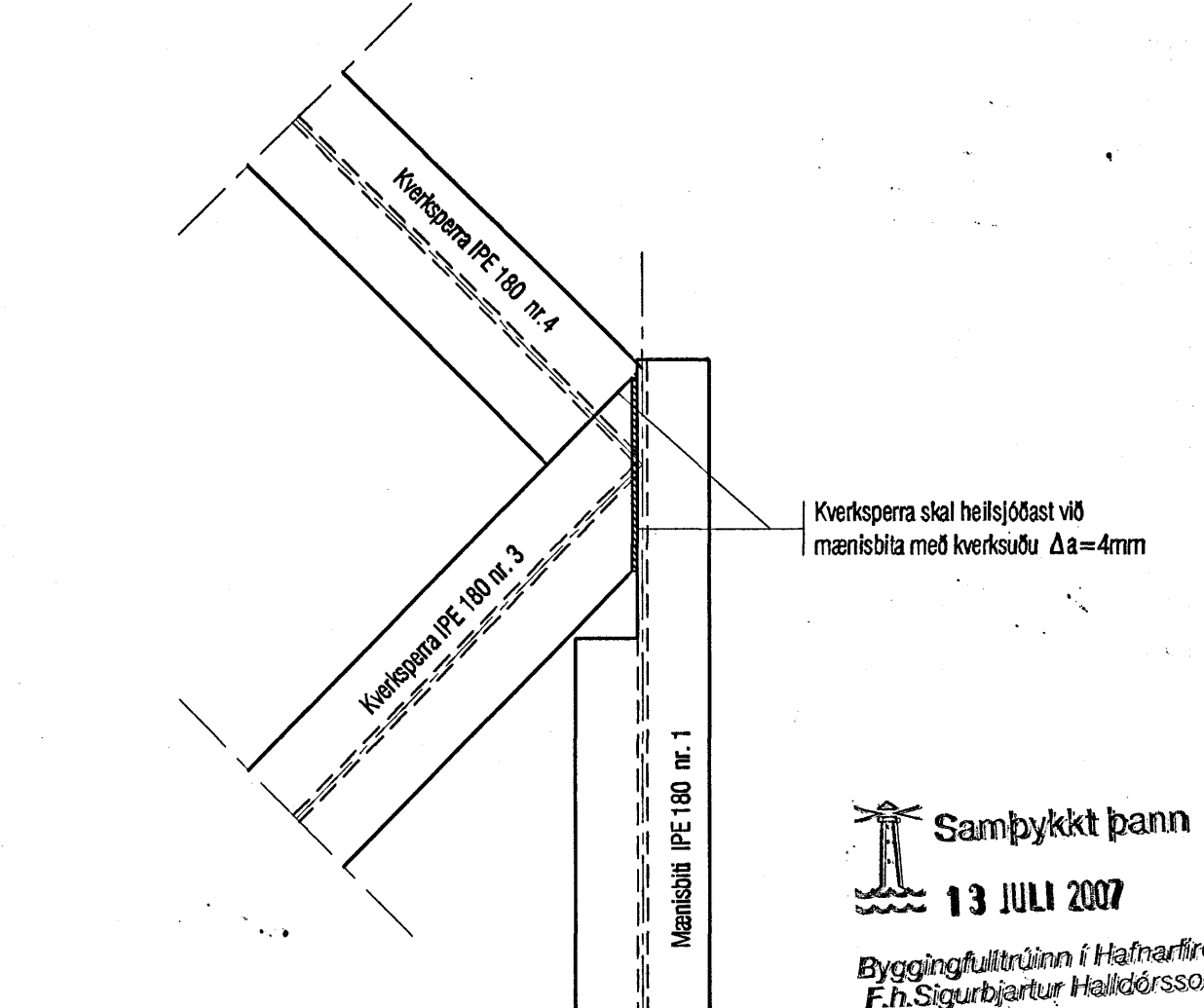
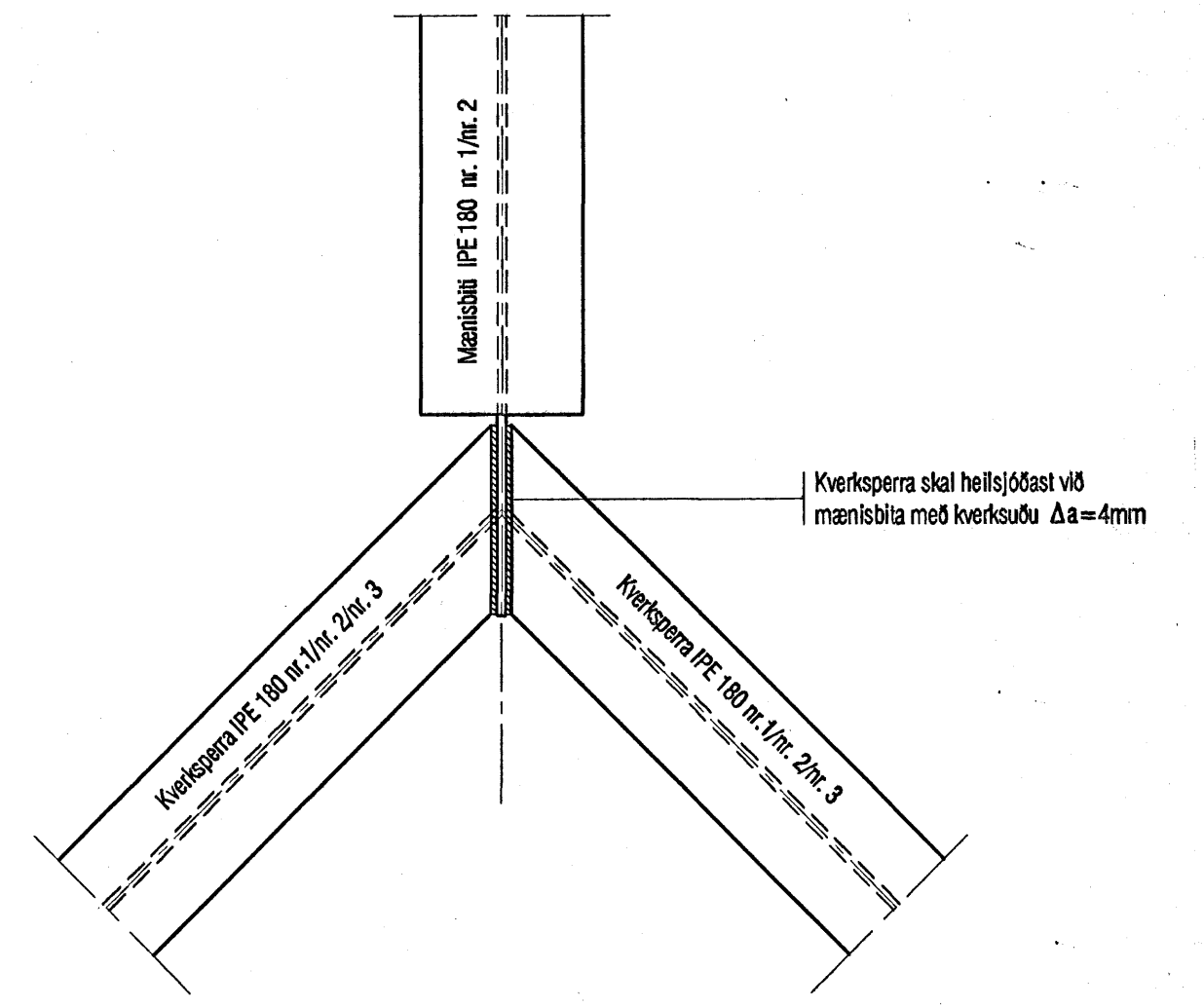
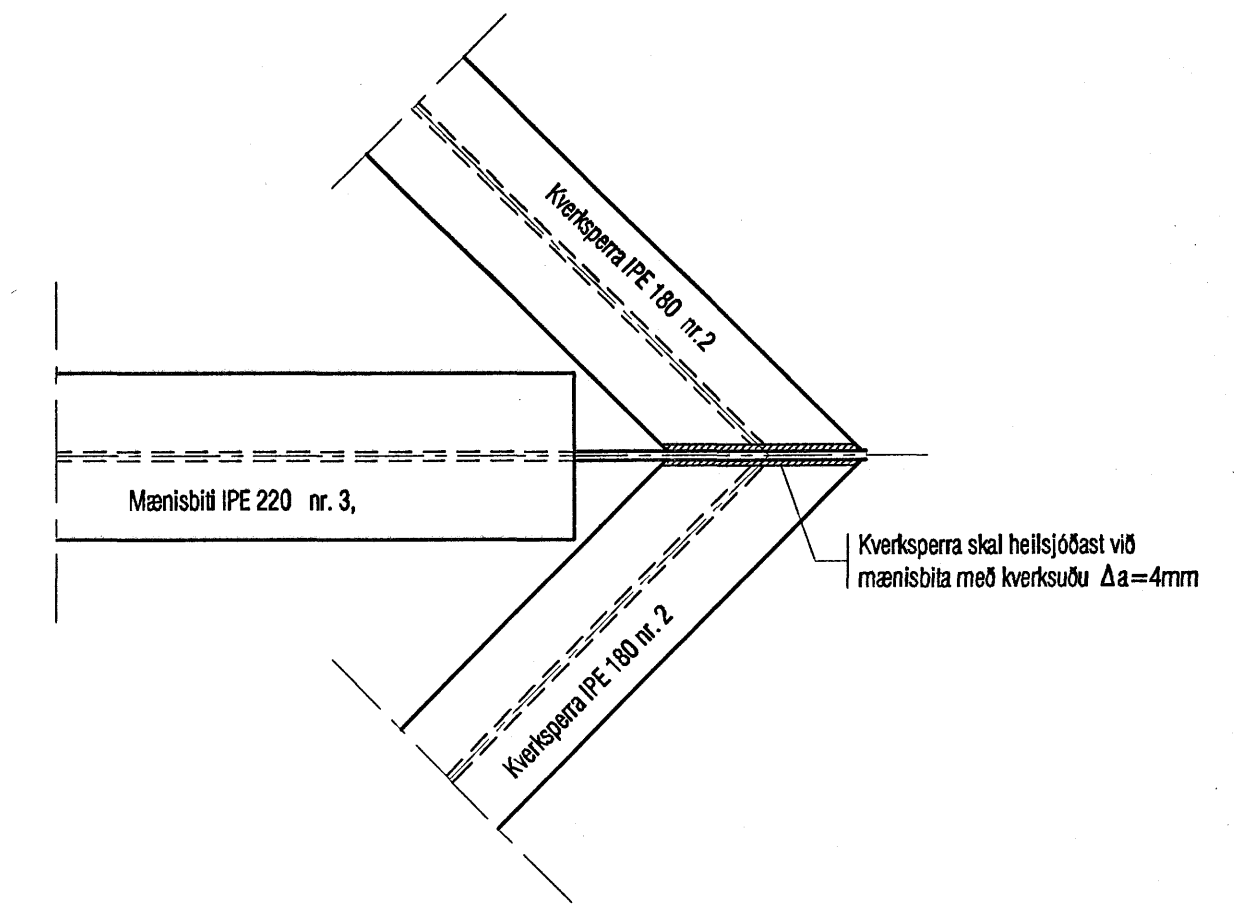
Séð ofan á bita, mkv. 1:5



Séð ofan á bita, mkv. 1:5



IPE bitar:
Sjódíst saman á slaðnum.



Sampykkt þann
13 JULI 2007
Byggingulltrúinn í Hafnarfirði
F.h.Sigurbjartur Hallgrímsson

VEKTOR -hönnun og ráðgjöf- Akralind 8, 201 Kópavog.		Sigurður Hafsteinsson Byggingatekniráðgjafi hl. 032888-7149 sími: 554-6800 fax: 554-6808	
Telva. nr.	Thv. og d. g.	St.	Dags.
Sampykkt	<i>[Signature]</i>		
PAKSPERRUR ÁSYNDIR IPE BITA		HAFRAVELLIR 8, HAFNARFIRÐI	
Fléttu	PJ	Fléttu	SM
Útgáfudagur	15.01.2007	Verk nr.	1:20/10/5
	A-06-06-34	Mælisbitar	B-04