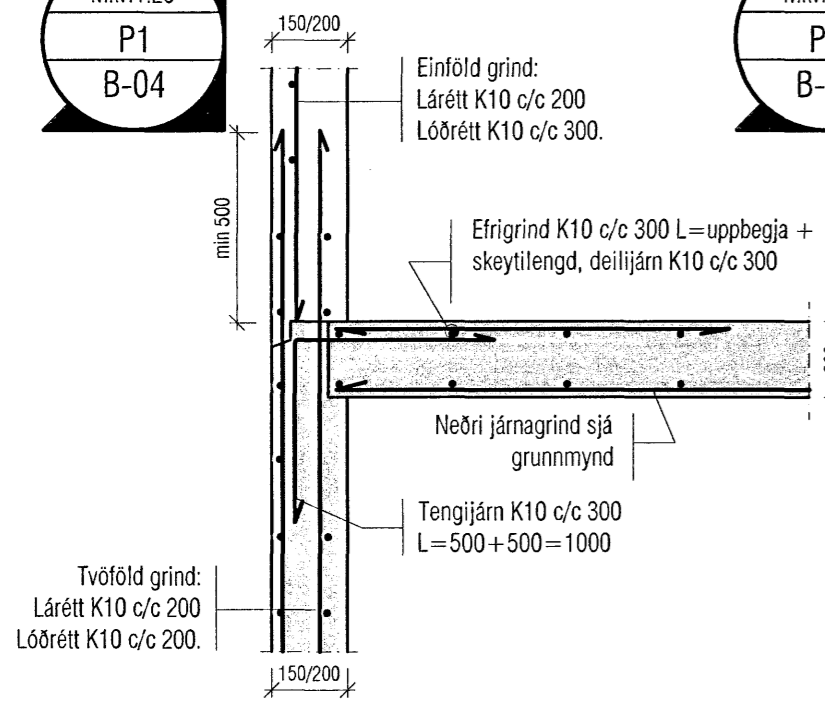
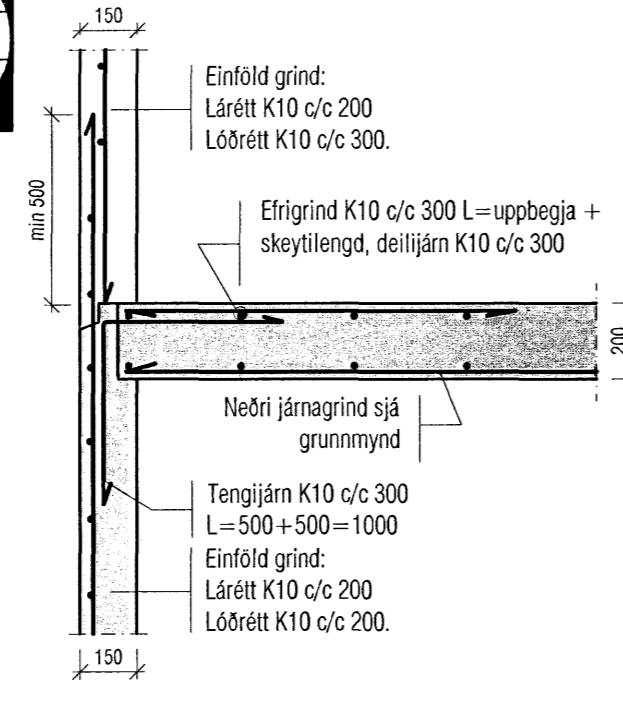


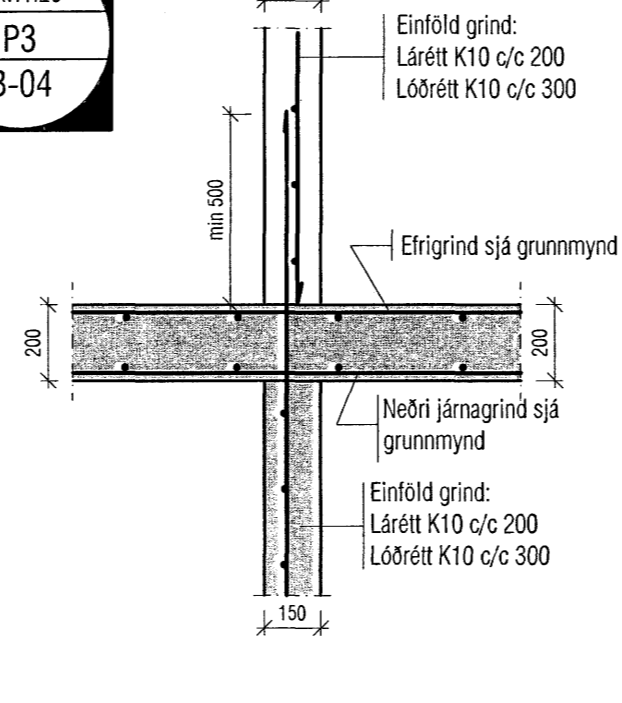
Mkv. 1:20
P1
B-04



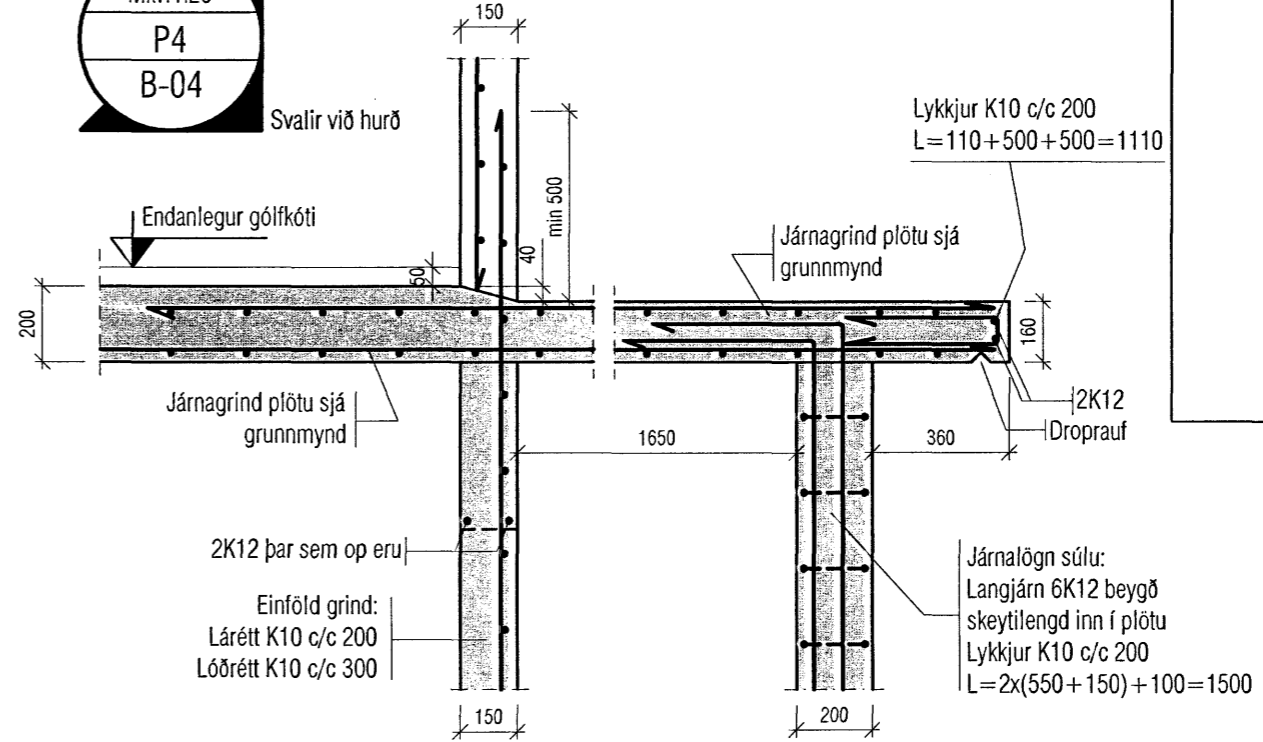
Mkv. 1:20
P2
B-04



Mkv. 1:20
P3
B-04

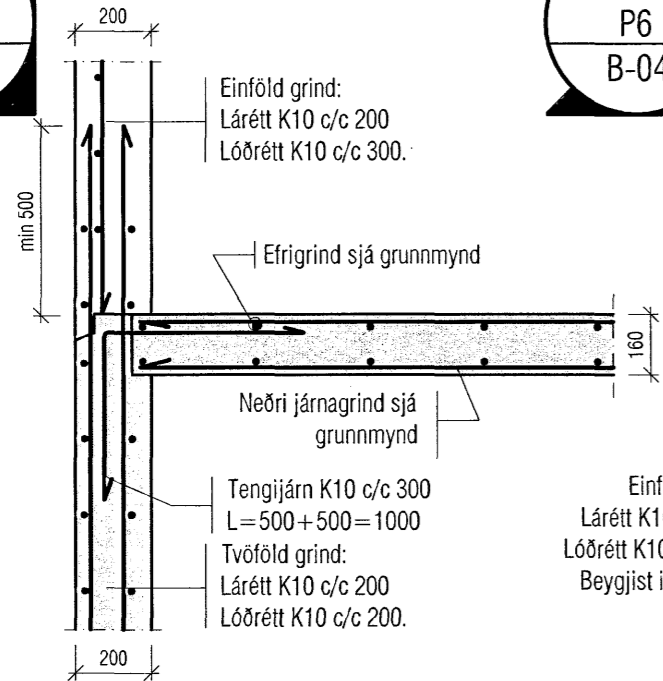


Mkv. 1:20
P4
B-04

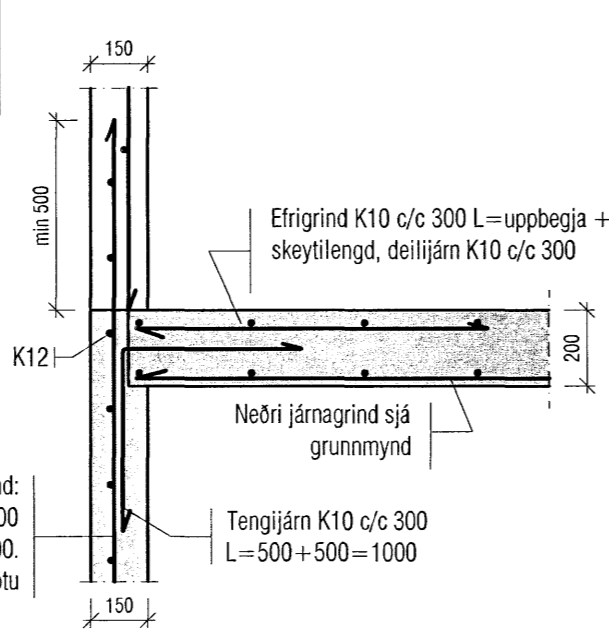


Mkv. 1:20
P5
B-04

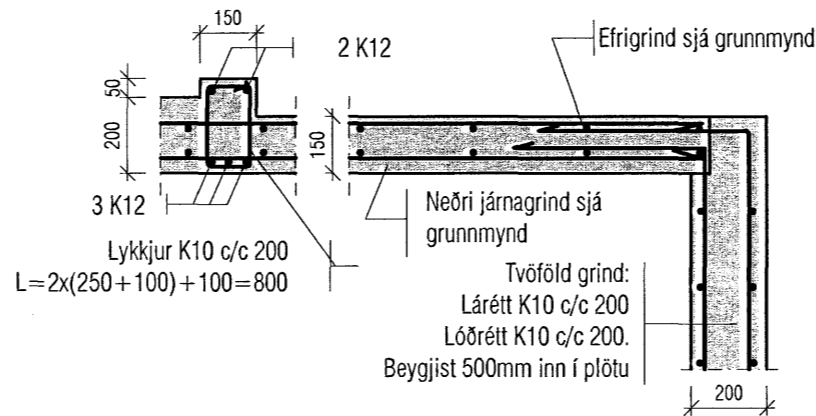
Svalir



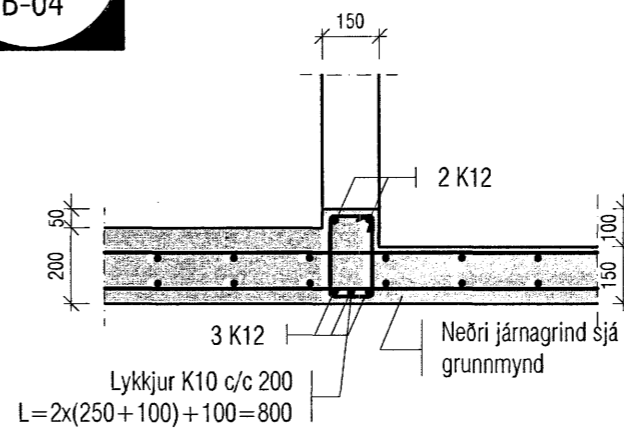
Mkv. 1:20
P6
B-04



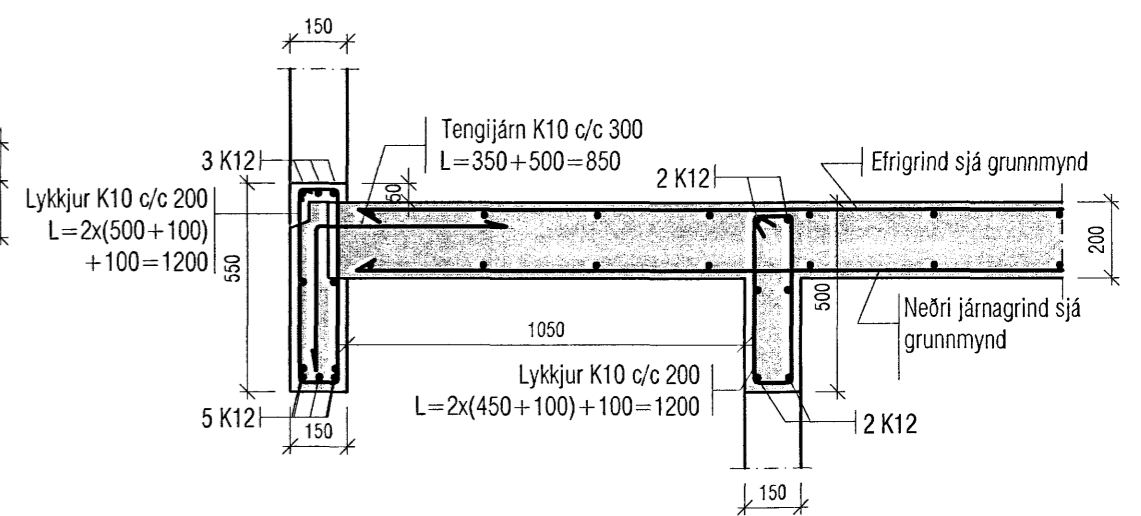
Mkv. 1:20
P7
B-04



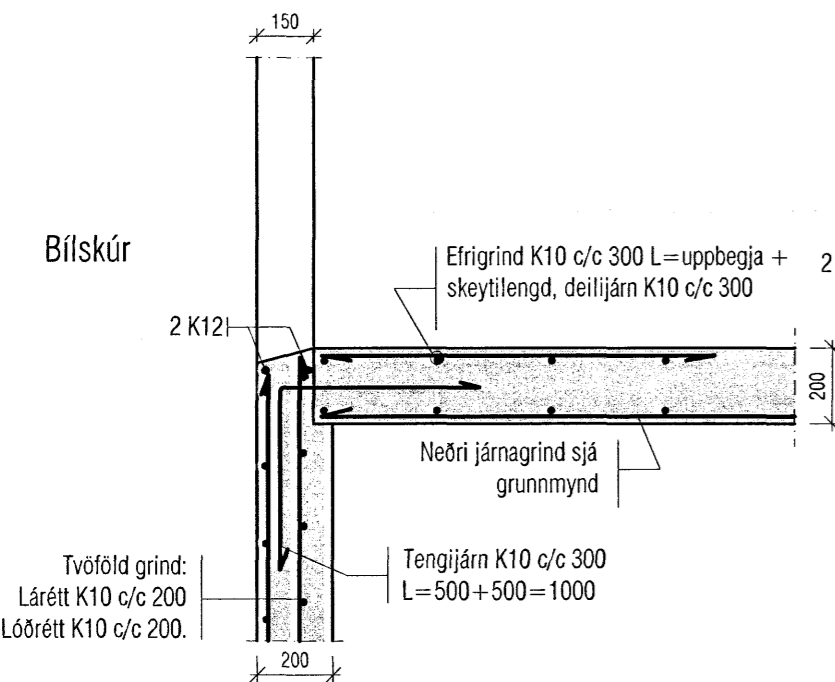
Mkv. 1:20
P8
B-04



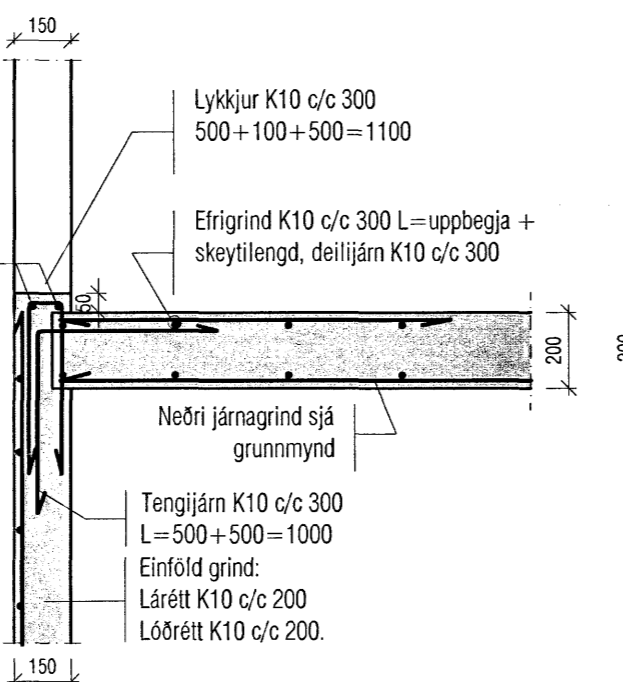
Mkv. 1:20
P9
B-04



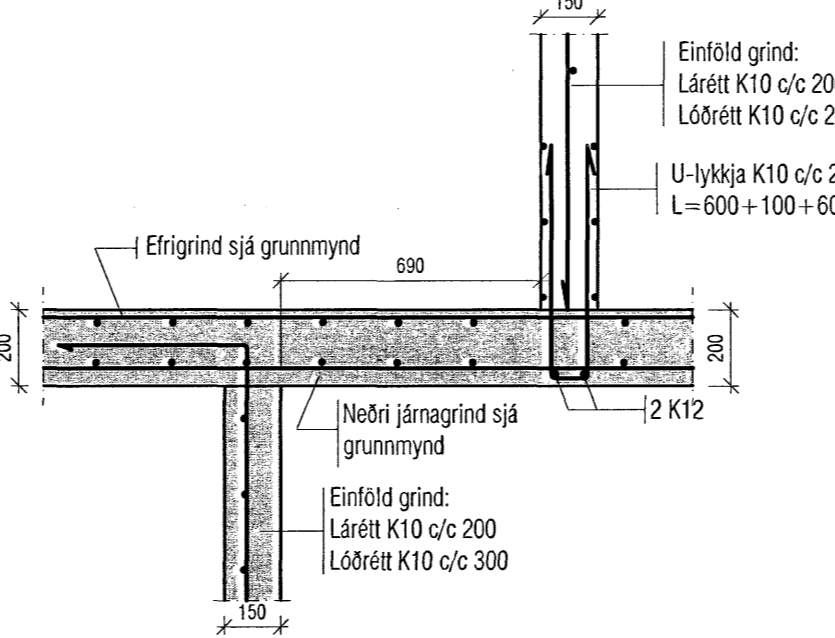
Mkv. 1:20
P10
B-04



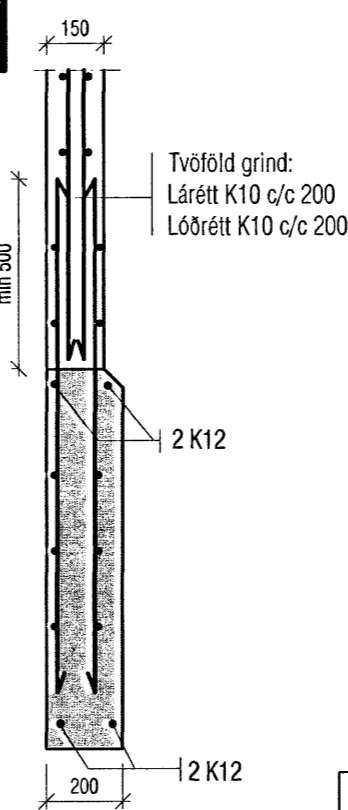
Mkv. 1:20
P11
B-04



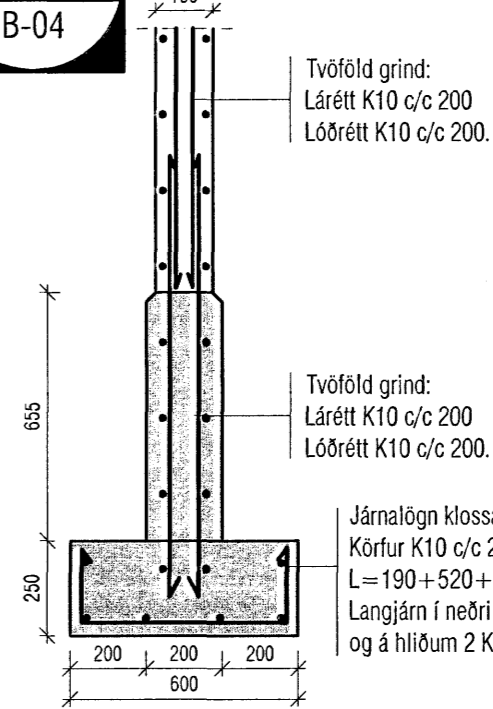
Mkv. 1:20
P12
B-04



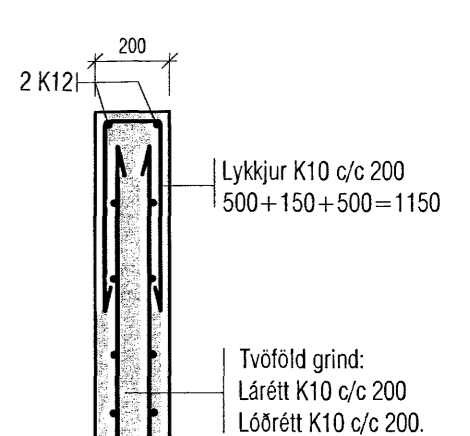
Mkv. 1:20
P13
B-04



Mkv. 1:20
P14
B-04



Mkv. 1:20
P15
B-04



Samþykkt þann
28 NOV. 2007
Byggingulfrúinn í Hafnarfirði
F.h. Sigurbjartur Halldórsson

Staðsetning vatnslása er einungis til viðmiðunar og ákveður verktaki hvar þeir eru staðsettir með tilliti til klæðningar.

VEKTOR - hönnun og ráðgjöf - Akralind 6, 201 Kópavogi.		Sigurður Hafsteinsson byggingatæknifræðingur Kt. 030659-7749 sími: 554-6650 fax: 554-6669.		BREKKUÁS 13, HAFNARFJÖRDUR PLÖTUR, DEILI	
Teikn. nr.	Tilvisun á teikningu	Br.	Dags.	Hannað	Teiknað
Samþykkt				IJ	EBO
				Dagsetning	Verk nr.
				07.11.07	B-07-02-14
				Mælikvarði	Teikn. nr.
				1:20	B-05