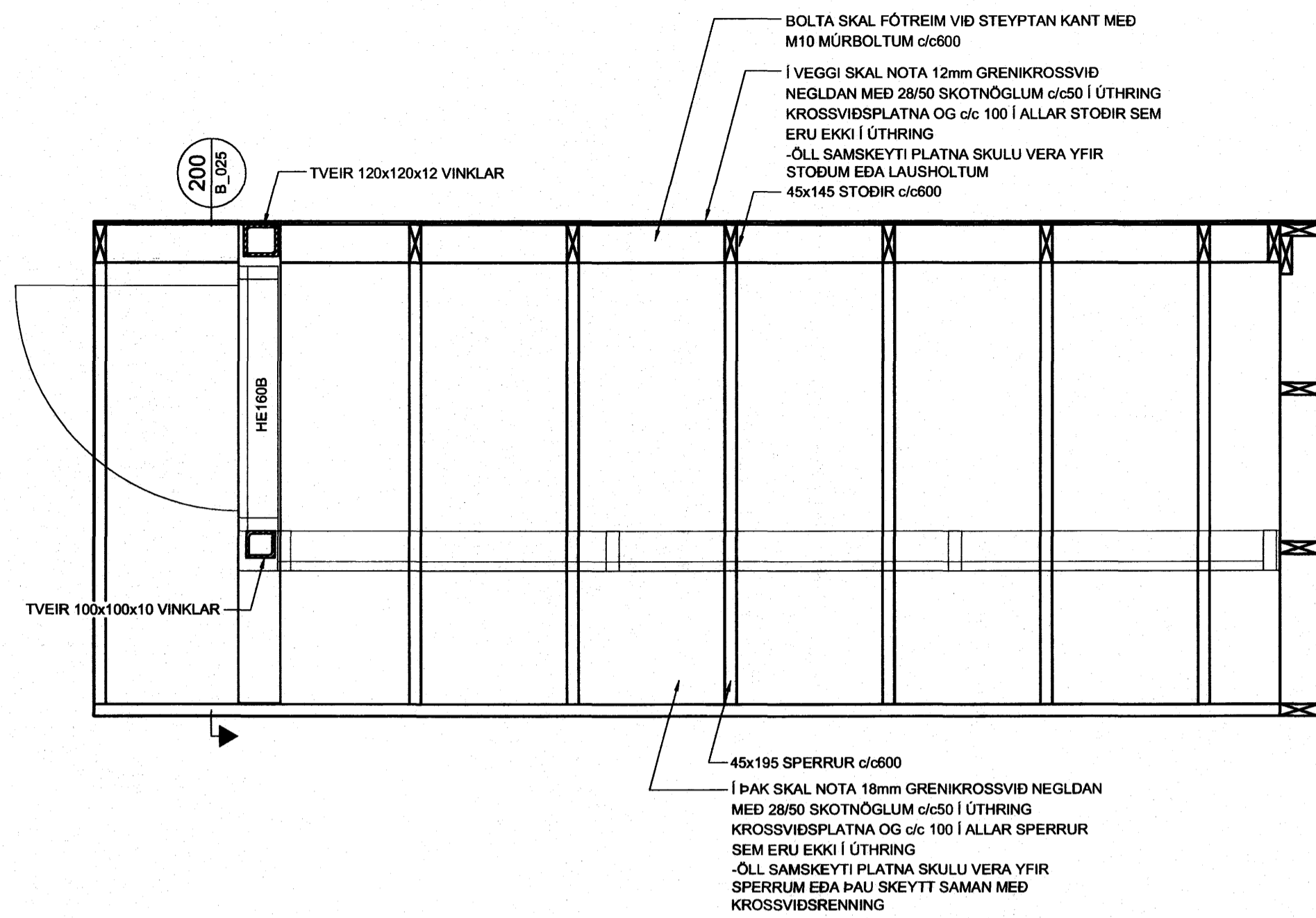
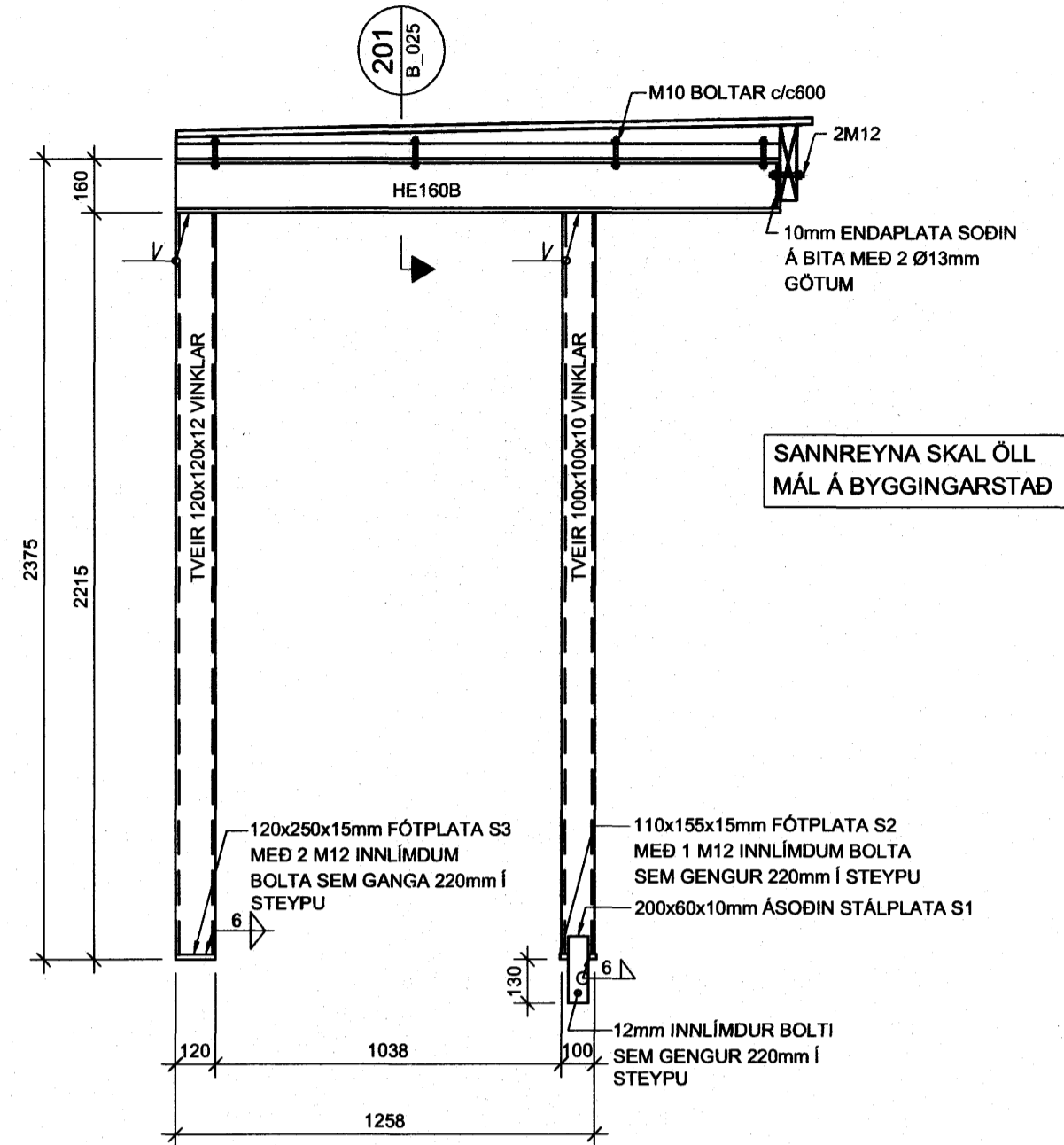


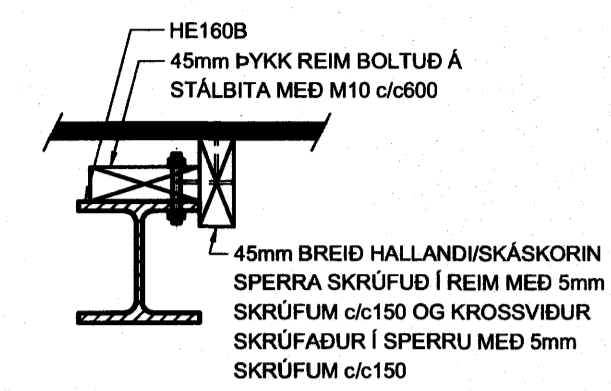
ÞAKHÝSI GRUNNMYND - 1:20



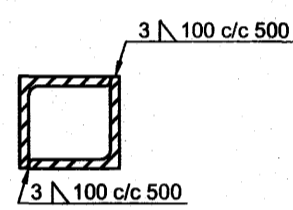
200 SNIÐ 1:20



201 SNIÐ 1:20



SAMSETNING Á VINKLUM

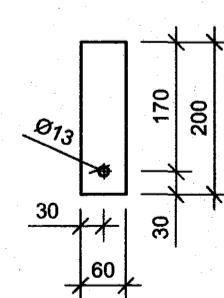


Samþykkt þann  
 08 OKT. 2007  
 Byggingultrúinn í Hafnarfirði  
 F.h. Sigurbjartur Halldórsson

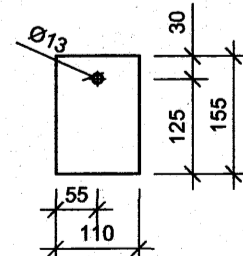
- ALMENNAR SKÝRINGAR:
- ALLT STÁL SKAL VERA S235
  - ALLT STÁL SKAL VERA GRUNNAD MED RYÐVARNARGRUNNI
  - ALLIR BOLTA SKULU VERA Í FLOKKI B.8
  - ÖLL SUDLAVINNA SKAL VERA UNNIN AF SUDUMONNUM MED TILSKILIN RÉTTINDI
  - SANNREYNA SKAL ÖLL MÁL Á BYGGINGARSTAD

TILVÍSANIR:  
 ALMENNAR SKÝRINGAR . . . . SJA BL. NR. B(15-21)\_001

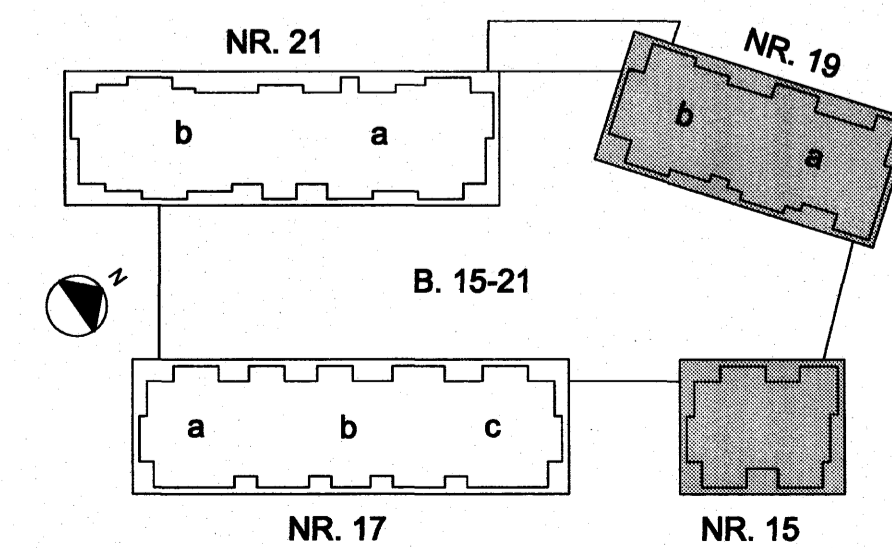
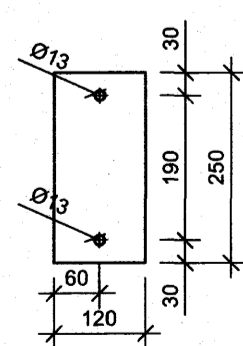
STÁLPLATA S1 - 10mm ÞYKK



STÁLPLATA S2 - 15mm ÞYKK



STÁLPLATA S3 - 15mm ÞYKK



BR.	DAGS.	BREYTING	REIKN.	TEKNI.
NORÐURBAKKI 15-21				
BURDARVIRKI				
ÞAKHÝSI FYRIR HÚS 15 OG 19				
GRUNNMYND OG SNIÐ				
MKV:	1:10 / 1:20			
DAGS:	14.07.2007			
HANNAÐ/TEKNI:	HEGG			
VERKNI:	09/104			
YFIRFAR:				
SAMÞYKKT:				
KENNITALA:	130657-4439			
TEKNI. NR.:	B(15-21)_025			