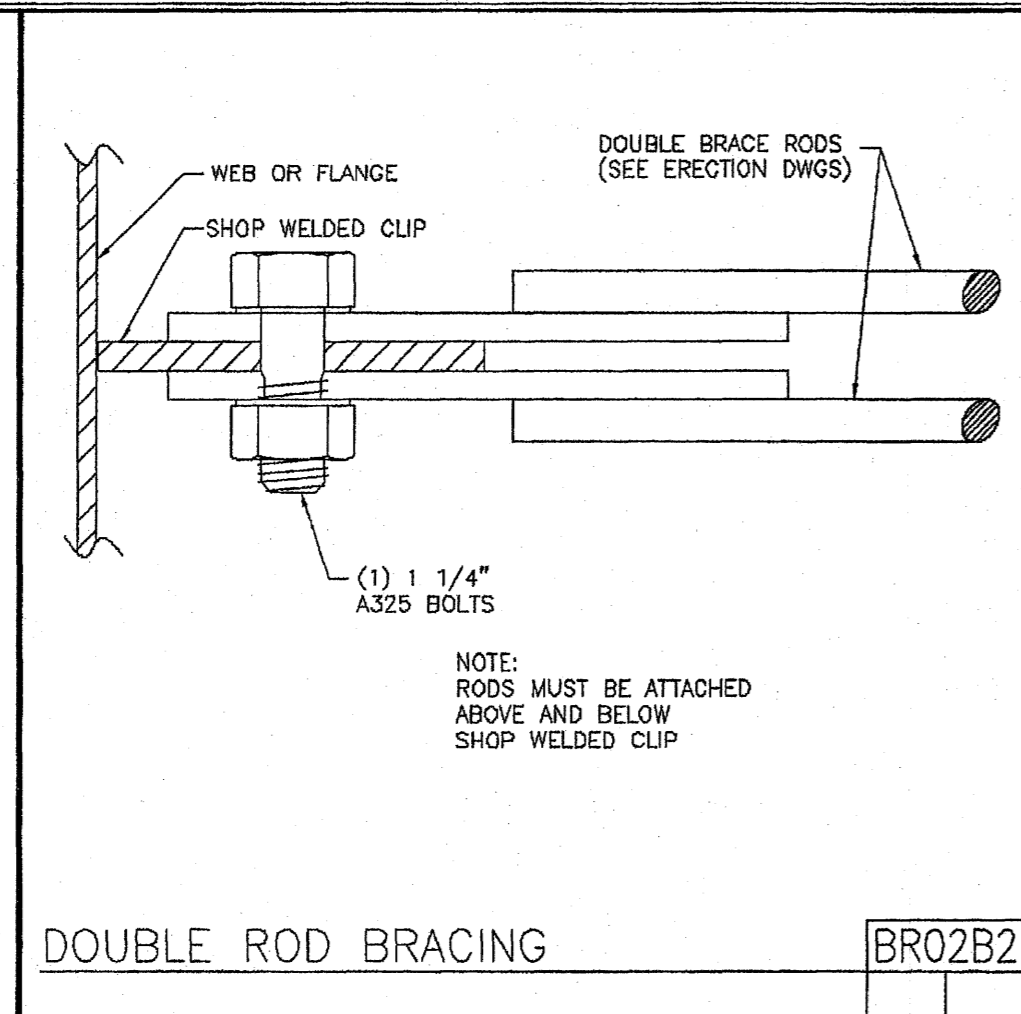
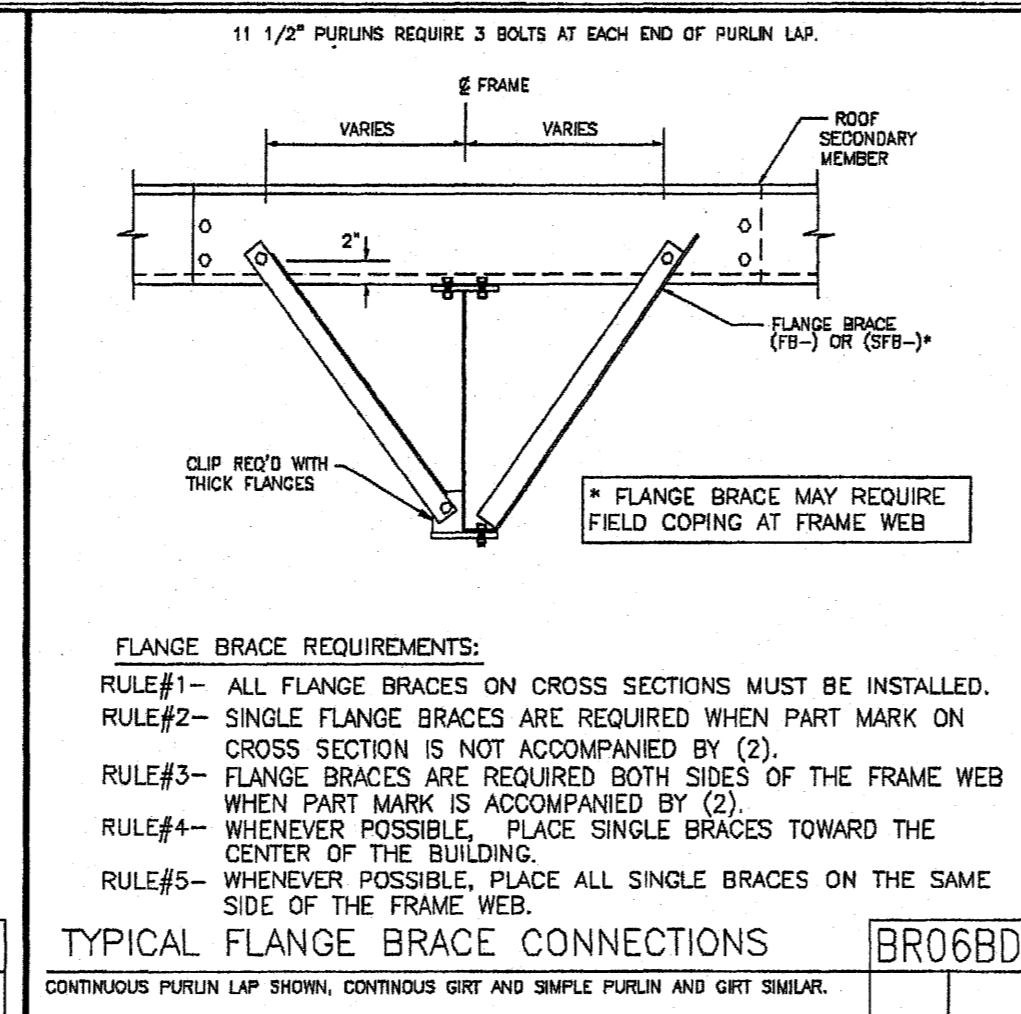


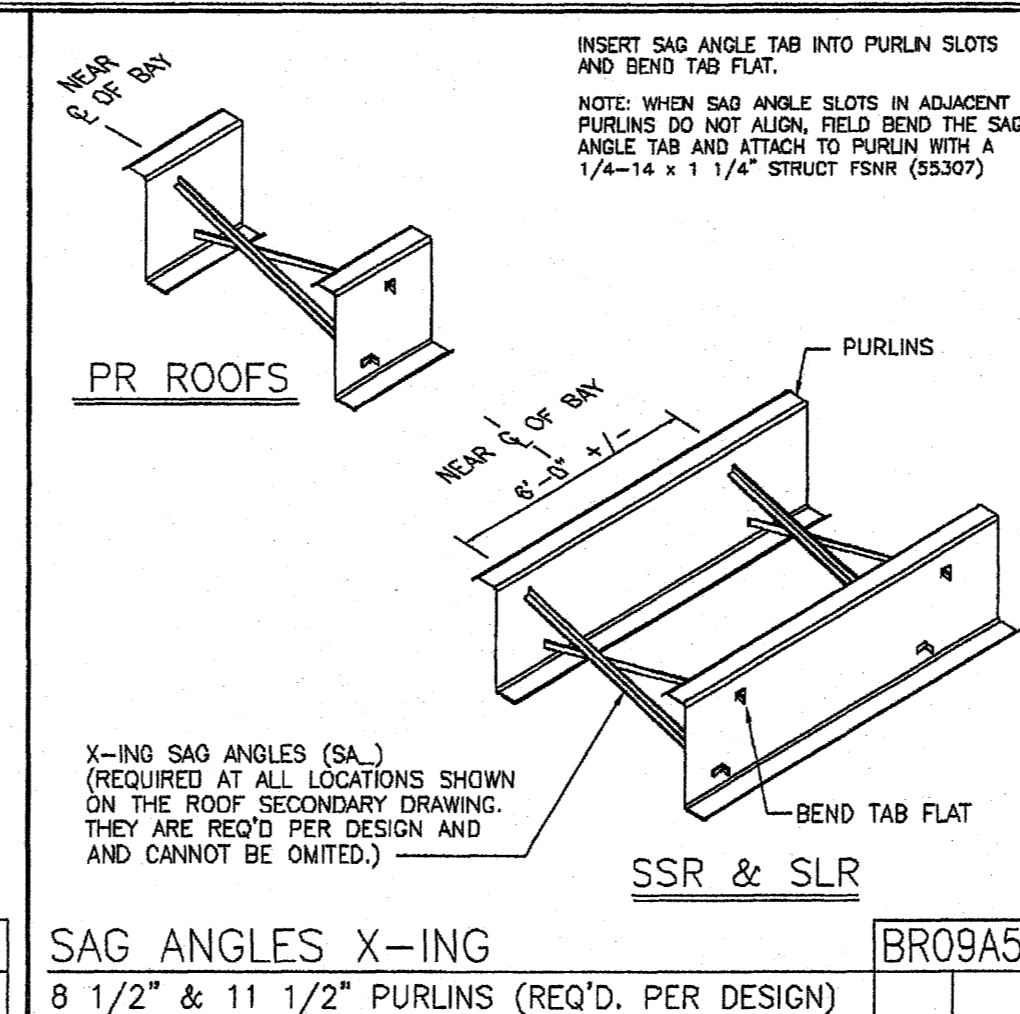
ROD BRACING AT COL. BASE BR02A1
3-PLATE OR GAGE BR02A1A R 11/15/2005



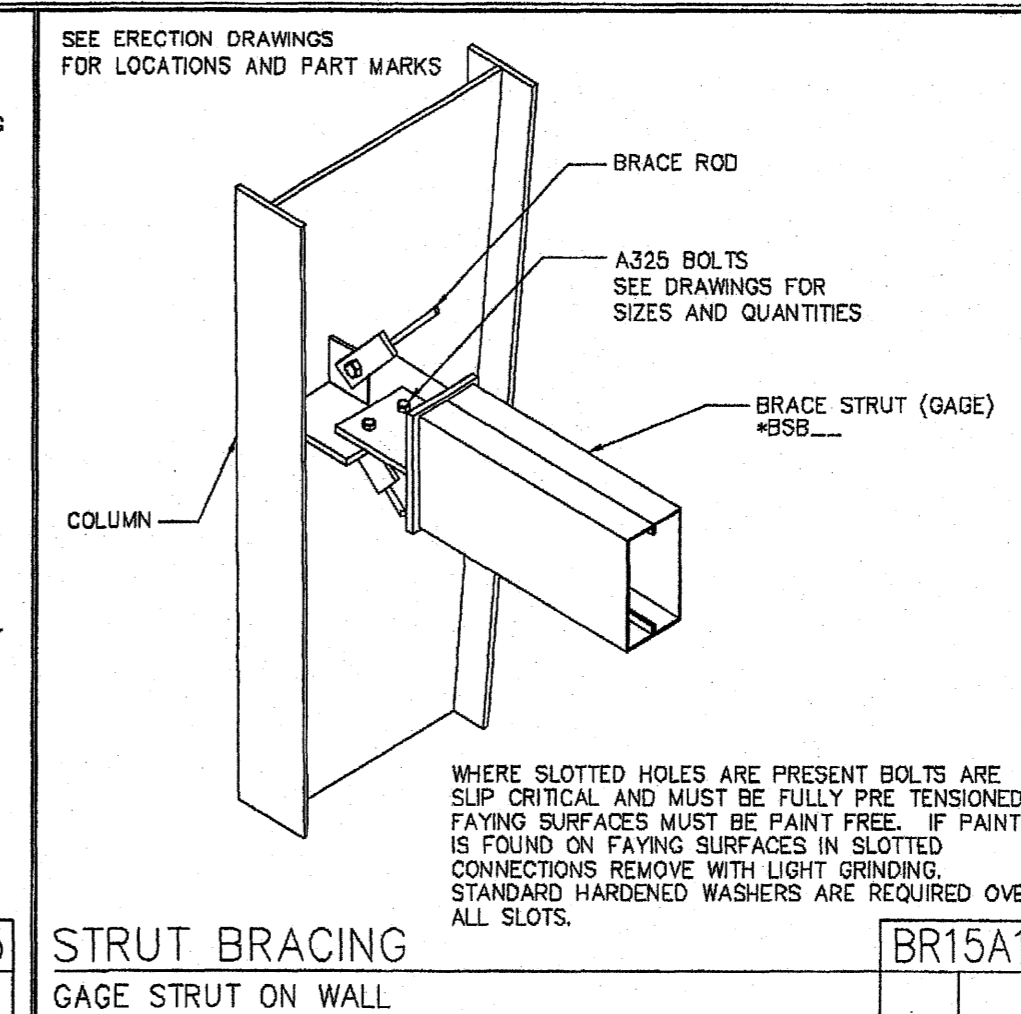
DOUBLE ROD BRACING BR02B2
BR02B2A R 02/21/2005



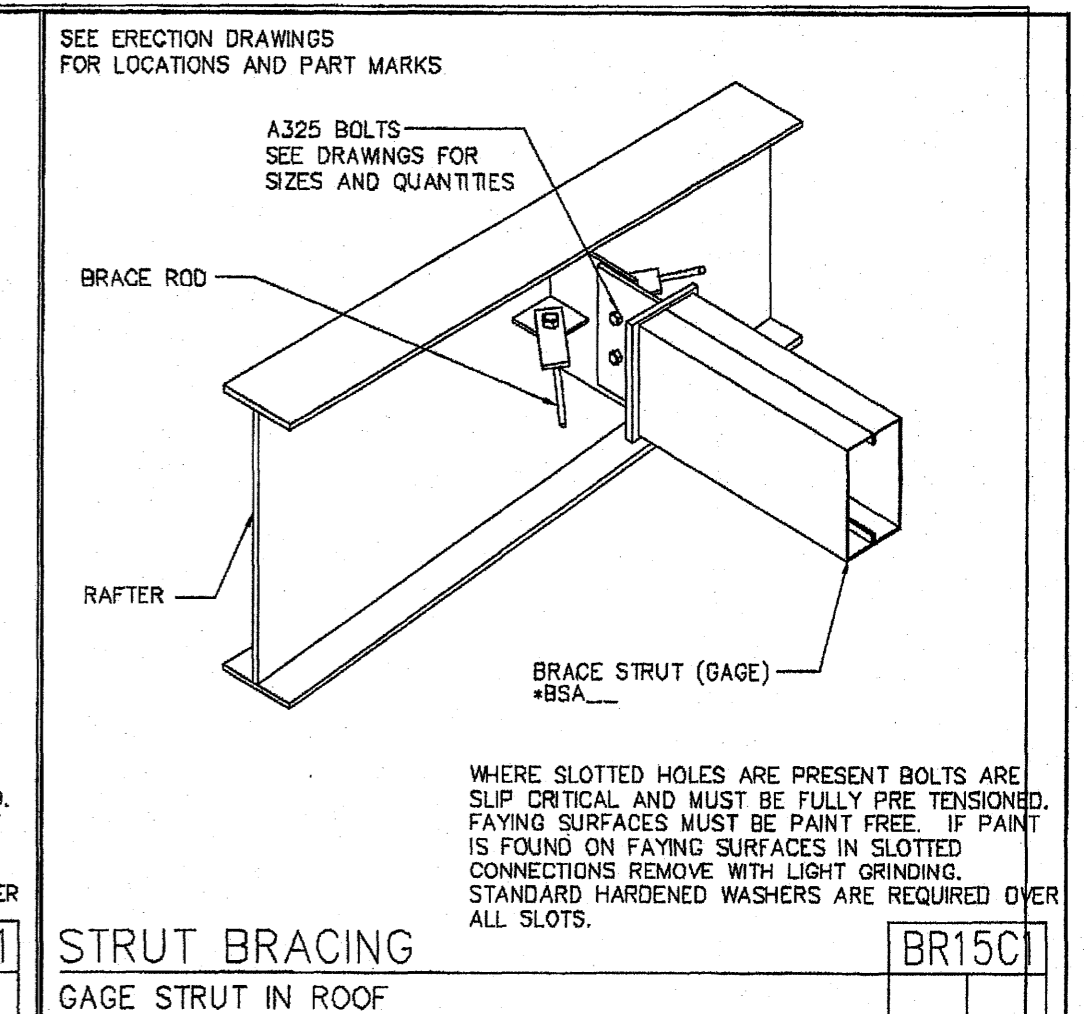
TYPICAL FLANGE BRACE CONNECTIONS BR06BD
CONTINUOUS PURLIN LAP SHOWN, CONTINUOUS GIRT AND SIMPLE PURLIN AND GIRT SIMILAR. BR06BD07 R 11/10/2005



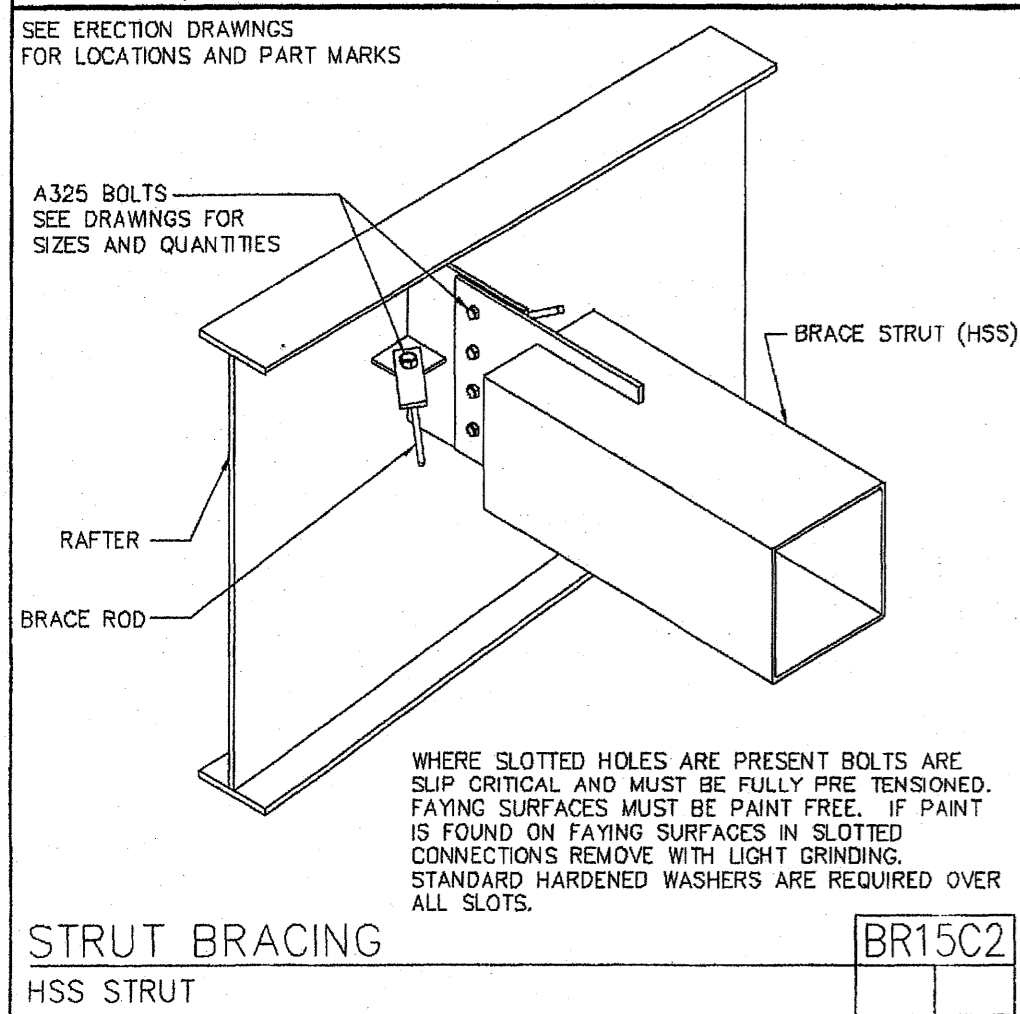
SAG ANGLES X-ING BR09A5
8 1/2" & 11 1/2" PURLINS (REQ'D. PER DESIGN) BR09A5 R 06/01/2003



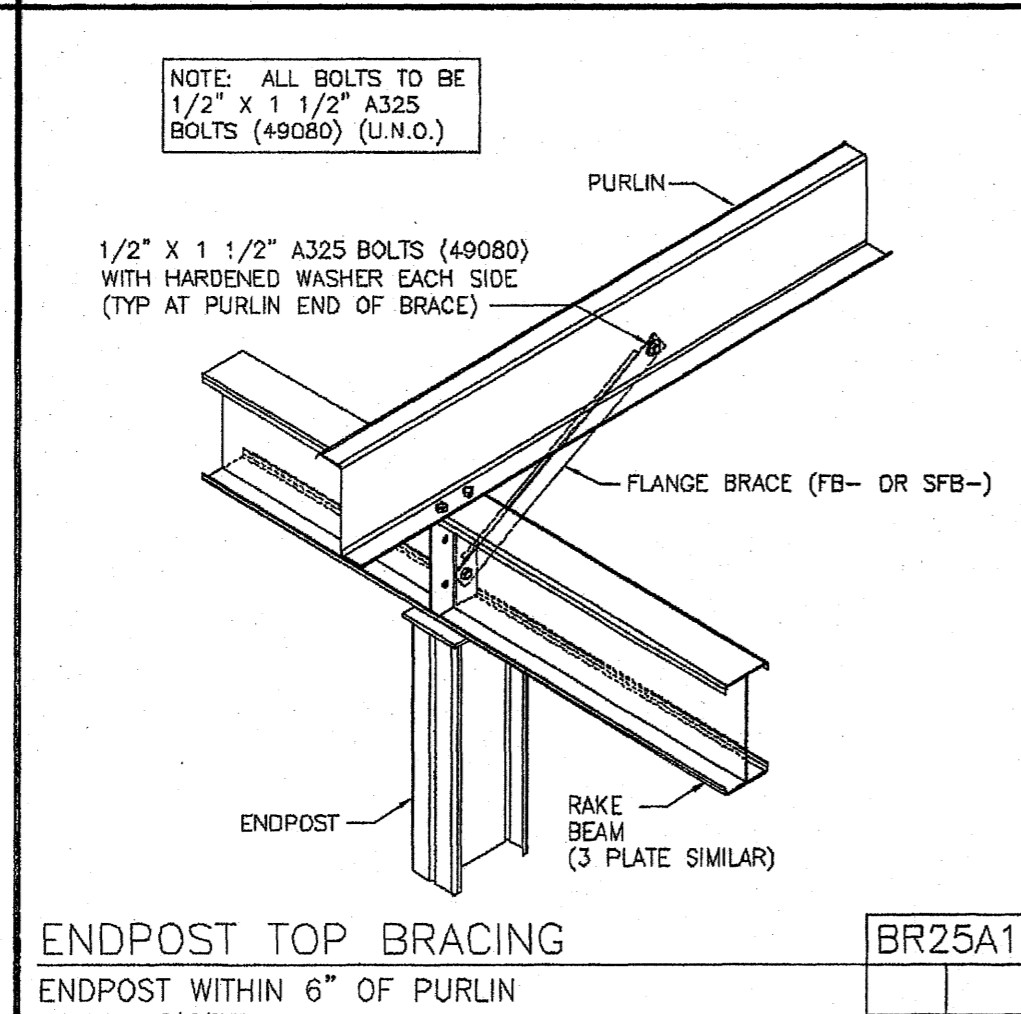
STRUT BRACING BR15A1
GAGE STRUT ON WALL BR15A1A 03/25/2003



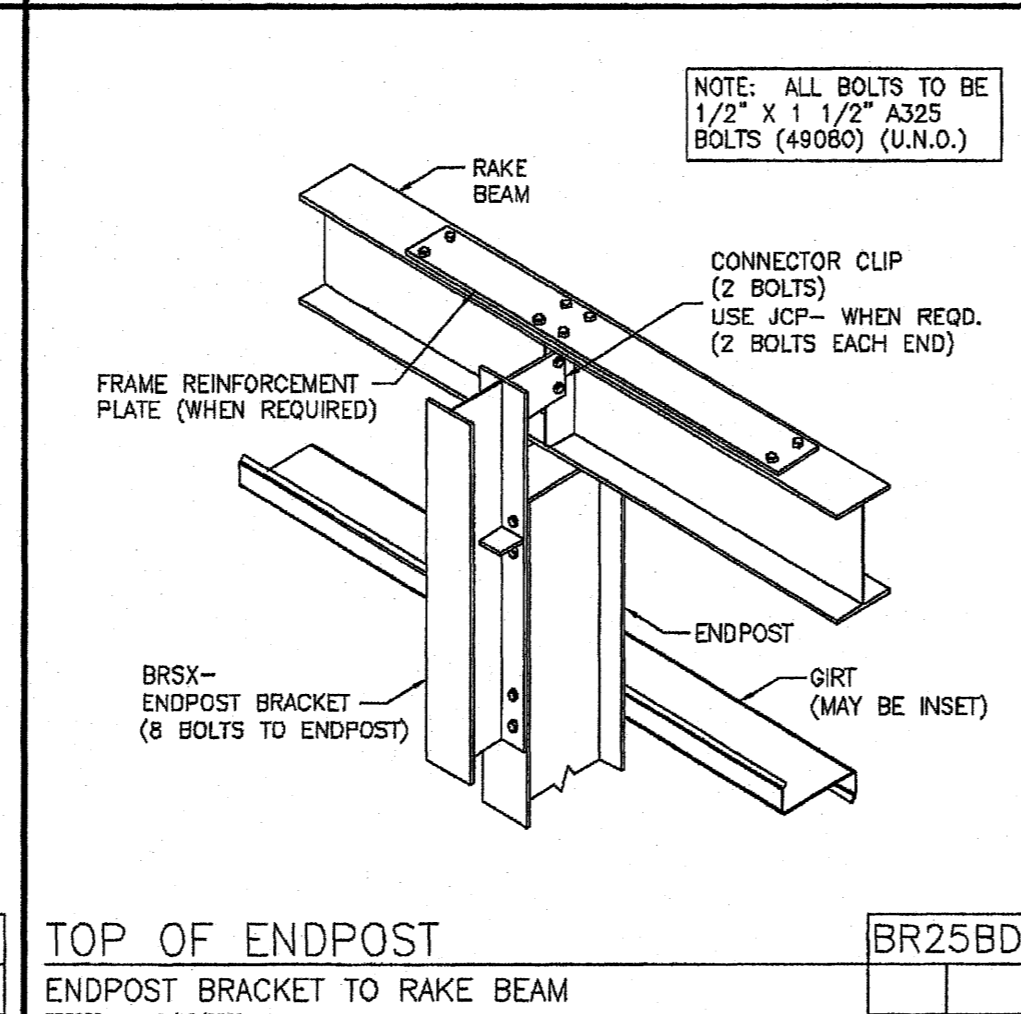
STRUT BRACING BR15C
GAGE STRUT IN ROOF BR15C02 03/25/2003



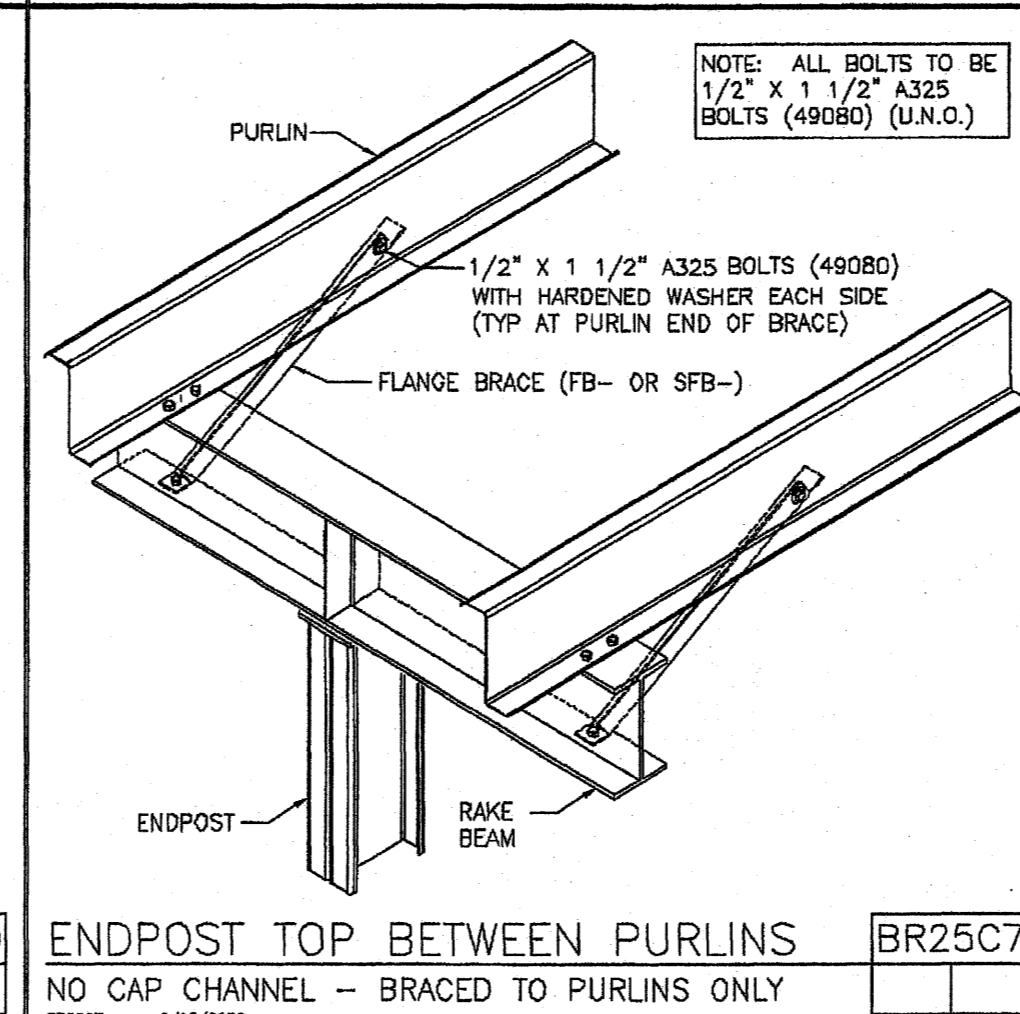
STRUT BRACING BR15C2
HSS STRUT BR15C2A 03/14/2003



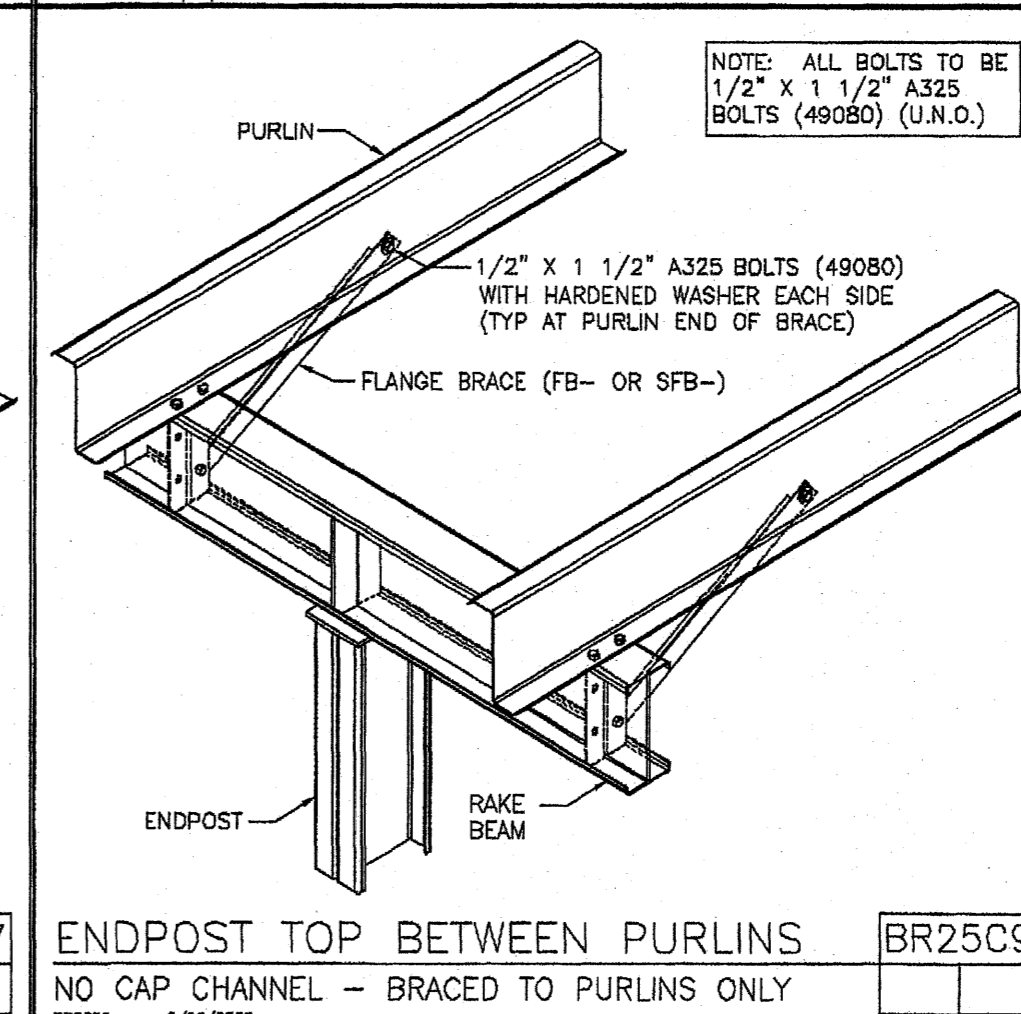
ENDPOST TOP BRACING BR25A1
ENDPOST WITHIN 6" OF PURLIN BR25A1A 10/10/2003



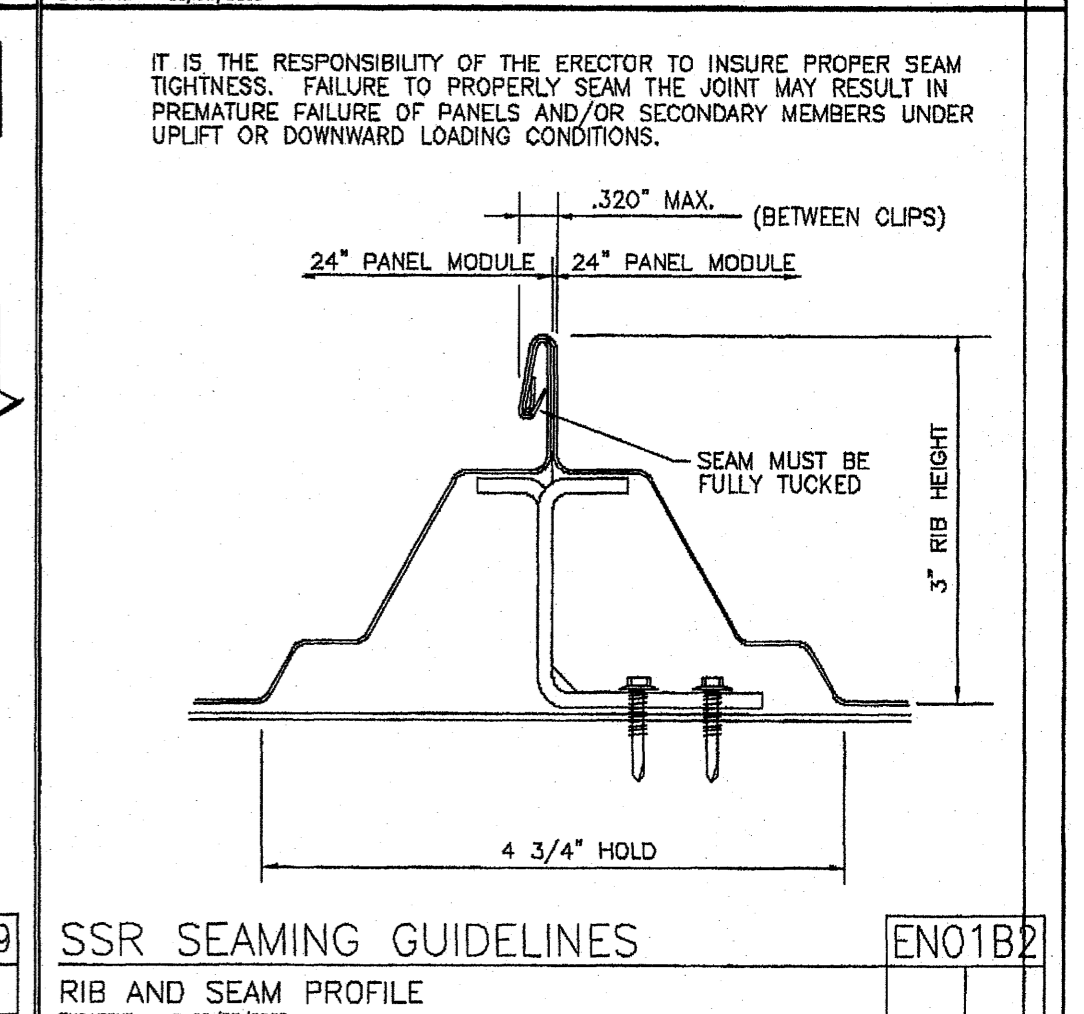
TOP OF ENDPOST BR25BD
ENDPOST BRACKET TO RAKE BEAM BR25BD08 8/13/2003



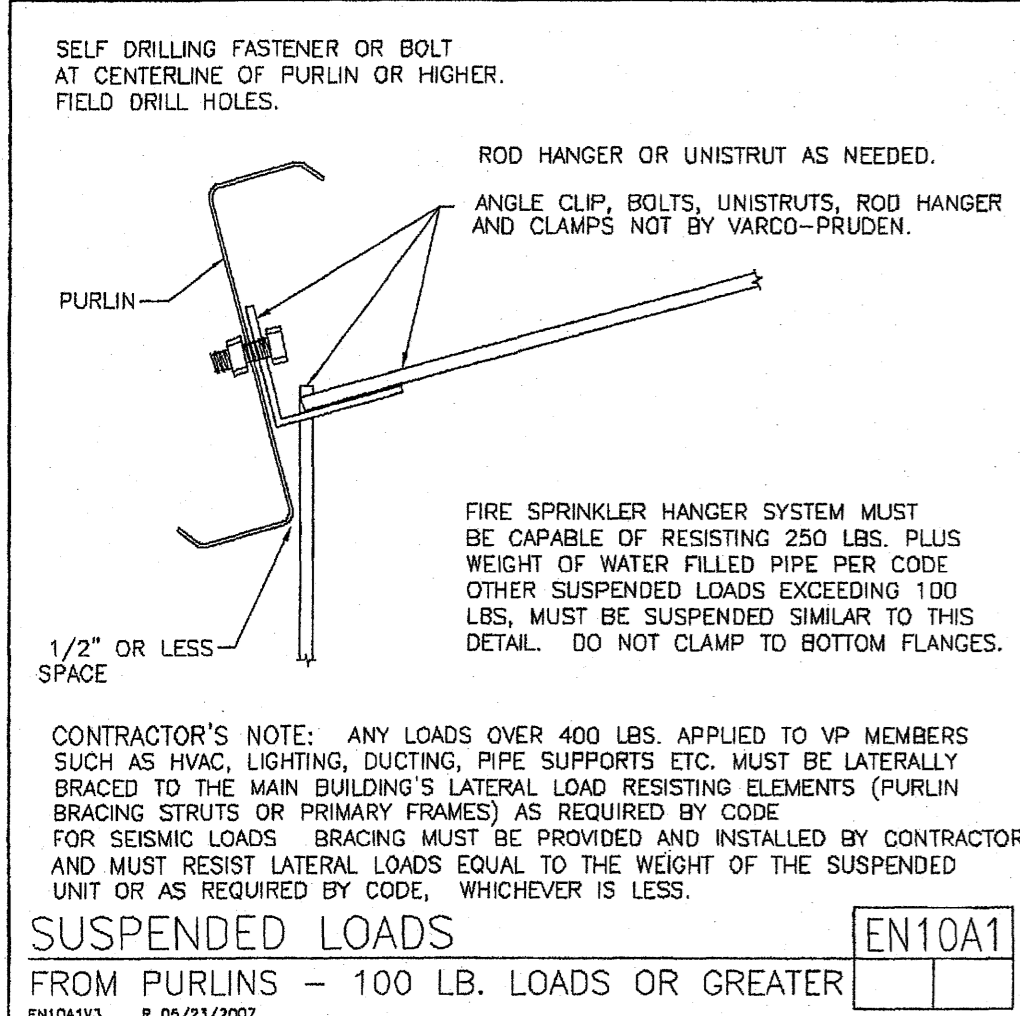
ENDPOST TOP BETWEEN PURLINS BR25C7
NO CAP CHANNEL - BRACED TO PURLINS ONLY BR25C7 8/23/2003



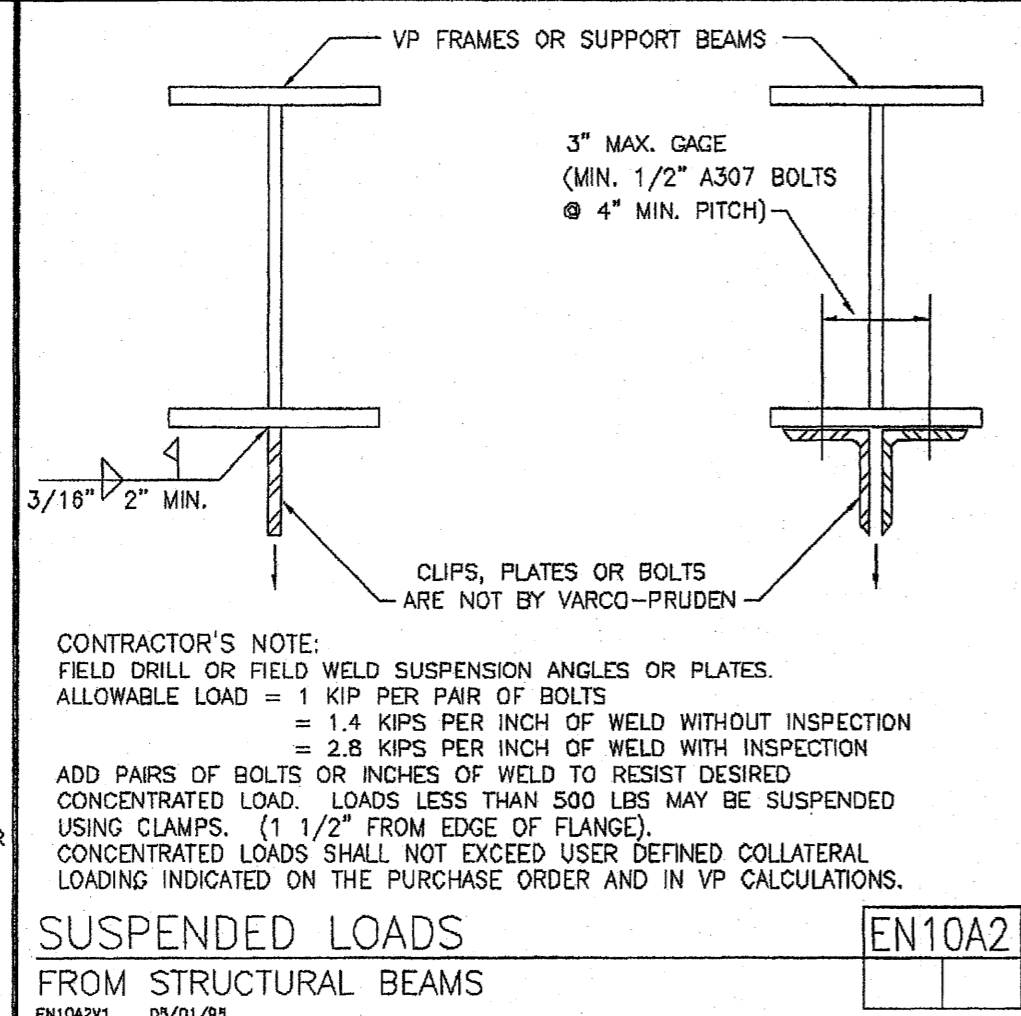
ENDPOST TOP BETWEEN PURLINS BR25C9
NO CAP CHANNEL - BRACED TO PURLINS ONLY BR25C9 8/23/2003



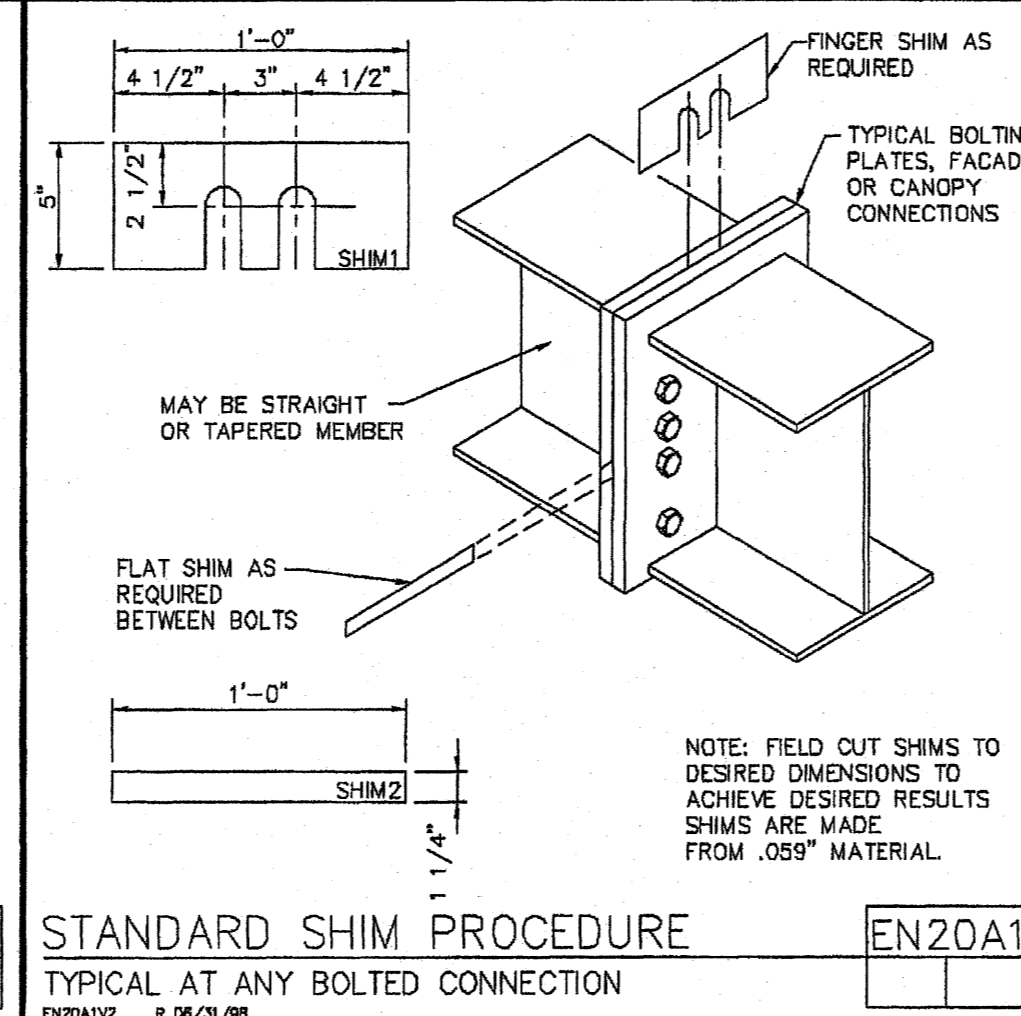
SSR SEAMING GUIDELINES EN01B2
RIB AND SEAM PROFILE EN01B2C 09/22/2003



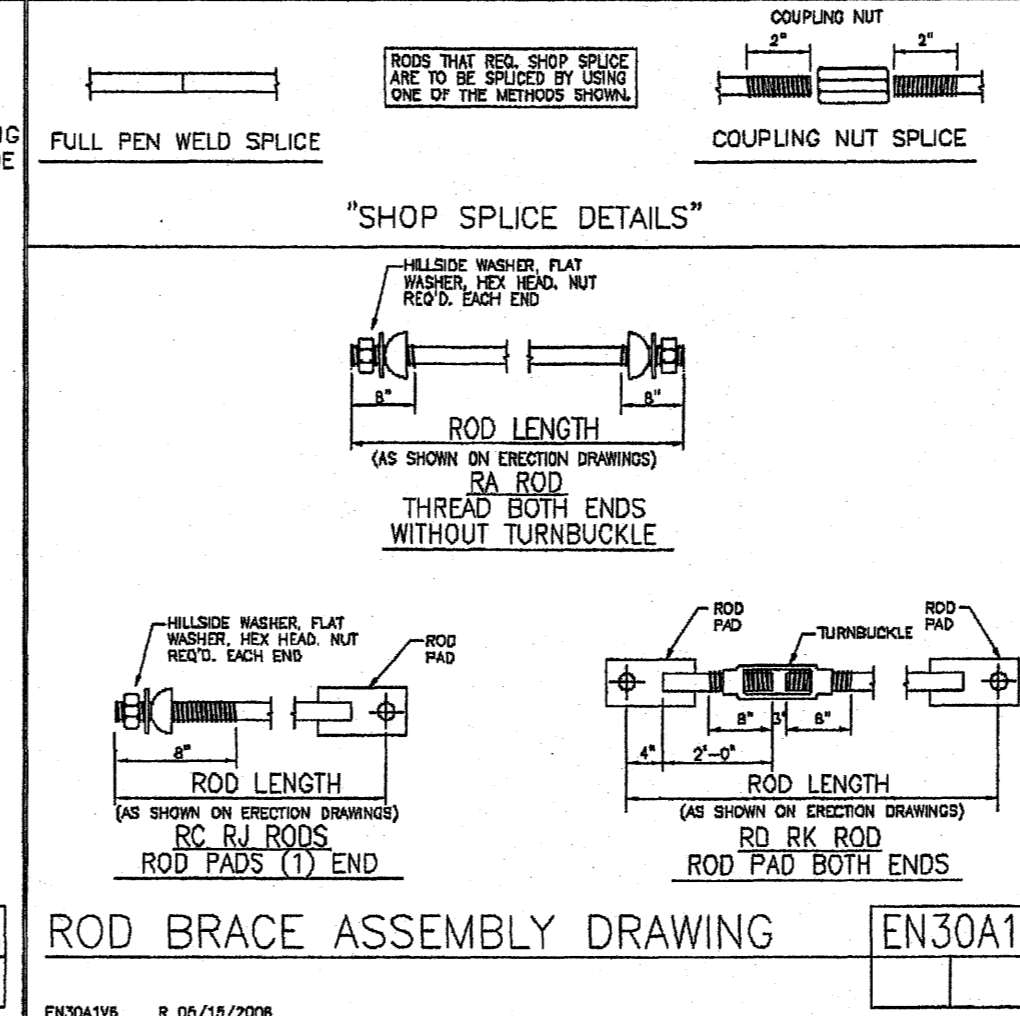
SUSPENDED LOADS EN10A1
FROM PURLINS - 100 LB. LOADS OR GREATER EN10A1A R 05/23/2007



SUSPENDED LOADS EN10A2
FROM STRUCTURAL BEAMS EN10A2A 03/01/03



STANDARD SHIM PROCEDURE EN20A1
TYPICAL AT ANY BOLTED CONNECTION EN20A1A R 06/21/03



ROD BRACE ASSEMBLY DRAWING EN30A1
EN30A1A R 05/15/2006

MARK NUMBER KEY EN50A1
COMMON GENERATED MARK NUMBERS EN50A1A R 11/09/2006

F = FEET	G = GAGE	CX*** = COLUMN (PLATE)
I = INCHES	O = OPERATION	CG*** = COLUMN (GAGE)
E = EIGHTHS	C = FIN/COLOR	WC*** = COLUMN (HOTROLL)
PANEL/COVERING		
W 1 3 1 1 7 2 6 1 K T B	RB*** = RAFTER (PLATE)	
M F F I E G G C C C	BG*** = RAFTER (GAGE)	
LENGTH CODE	WR*** = RAFTER (HOTROLL)	
	TR*** = TRUSS RAFTER	
INSULATION		
I B 1 3 0 1 0 3 6 0 3 0 W V	IC*** = INTERIOR COLUMN	
M F F F I I I I I E C C	PC*** = PIPE COLUMN	
LENGTH WIDTH THK CODE	TC*** = TUBE COLUMN	
SECONDARY (STANDARD)		
O I G 1 9 1 1 4 1 7	EP*** = ENDPOST (PLATE)	
M F F I I E G G	EC*** = ENDPOST (GAGE)	
LENGTH CODE		
SECONDARY (SPECIAL)		
O O I G 1 9 1 1 4 1 7	CCB*** = CANOPY (GAGE)	
M F F I I E G G	CB*** = PIGGYBACK CANOPY	
LENGTH CODE		
ROD BRACING		
O 3 R A 2 5 1 0		
I E M F F I I		
DIA LENGTH		

SECONDARY PUNCH PATTERNS EN51A1
COMMON GENERATED MARK NUMBERS EN51A1A R 05/15/2006

GAGE		EIGHTHS		LENGTH		CATEGORY	
INCHES		INCHES		FEET		(millimeters)	
PUNCH PATTERN		PUNCH PATTERN		PUNCH PATTERN		PUNCH PATTERN	
Q1=SIMPLE INTERIOR	Q2=SIMPLE 1' END BAY	Q3=SIMPLE 6' END BAY	Q4=END HOLE ONLY	Q5=INSET NOTCH	Q6=NO HOLES	THE BAY/BUNDLE CODE IDENTIFIES THE BUILDING ROOF/WALL PLANE AND BAY	
1'-0"	20	30	40	6 1/2"	8 1/2"	BAY NUMBER	
1'-6"	21	31	41	6 1/2"	8 1/2"	ROOF/WALL NUMBER	
2'-0"	22	32	42	6 1/2"	8 1/2"	BUILDING SHAPE	
3'-0"	24	34	44	6 1/2"	8 1/2"	1 R 1 B 3	
4'-0"	26	36	46	6 1/2"	8 1/2"	MEMBER DEPTHS	

VSÓ RÁÐGJÖF
Með áritun á upprátt þennan ábyrgist VSÓ Ráðgjöf ehf. kt. 681272-0979, að hönnun sé faglega unnin og í samræmi við lög og reglugerðir um byggingarmál.
EYKT Byggingfulltrúgætt í Hafnarfirði
26 OCT 2007 Sigurbjartur Halldórsson.
MOTTEKID
Norðurhella 2 - 221 Hafnarfjörður
FOR CONSTRUCTION
Daqs. Nafn Kennitala

<p>THE VP ENGINEER'S SEAL APPLIES ONLY TO THE WORK PRODUCTS OF VP AND DESIGN AND PERFORMANCE REQUIREMENTS SPECIFIED BY VP. THE VP ENGINEER'S SEAL DOES NOT APPLY TO THE PERFORMANCE OR DESIGN OF ANY OTHER PRODUCT OR COMPONENT FURNISHED BY VP EXCEPT TO ANY DESIGN OR PERFORMANCE REQUIREMENTS SPECIFIED BY VP.</p>	<p>THIS DRAWING, INCLUDING THE INFORMATION HEREON, REMAINS THE PROPERTY OF VP BUILDINGS. IT IS PROVIDED SOLELY FOR ERECTING THE BUILDING DESCRIBED IN THE APPLICABLE PURCHASE ORDER AND SHALL NOT BE MODIFIED, REPRODUCED OR USED FOR ANY OTHER PURPOSE WITHOUT PRIOR WRITTEN APPROVAL OF VP BUILDINGS.</p>	<p>THE GENERAL CONTRACTOR AND/OR ERECTOR IS SOLELY RESPONSIBLE FOR ACCURATE, GOOD QUALITY WORKMANSHIP IN ERECTING THIS BUILDING IN CONFORMANCE WITH THIS DRAWING, DETAILS REFERENCED IN THIS DRAWING, ALL APPLICABLE VP ERECTION GUIDES, AND INDUSTRY STANDARDS PERTAINING TO PROPER ERECTION, INCLUDING THE CORRECT USE OF TEMPORARY BRACING.</p>	<p>VP Buildings, Inc. 3200 Players Club Circle Memphis TN 38125</p>	<p>BUILDING SED'S Norðurhella 2 - Hafnarfirði Stálgrind, festingar Sérmyndir Bl. nr. 65</p>	<p>JOBNO 07-4487 DATE 08/09/07 DRAWINGCHECK DJS PAGE 65</p>
			<p>REV DATE BY DESCRIPTION</p>	<p>NTS</p>	<p>FILENAME: 07-4487EP1.VPC</p>