

- Part Mark Key
 1 GFA106
 2 3C110308011
 3 E73
 4 P167
 5 E74

Sag Angle Schedule

Id	Qty	Mark No	Spacing
1	28	SA1100(X-Ing)	560

See SED: BR09A5 for installation of X-Ing

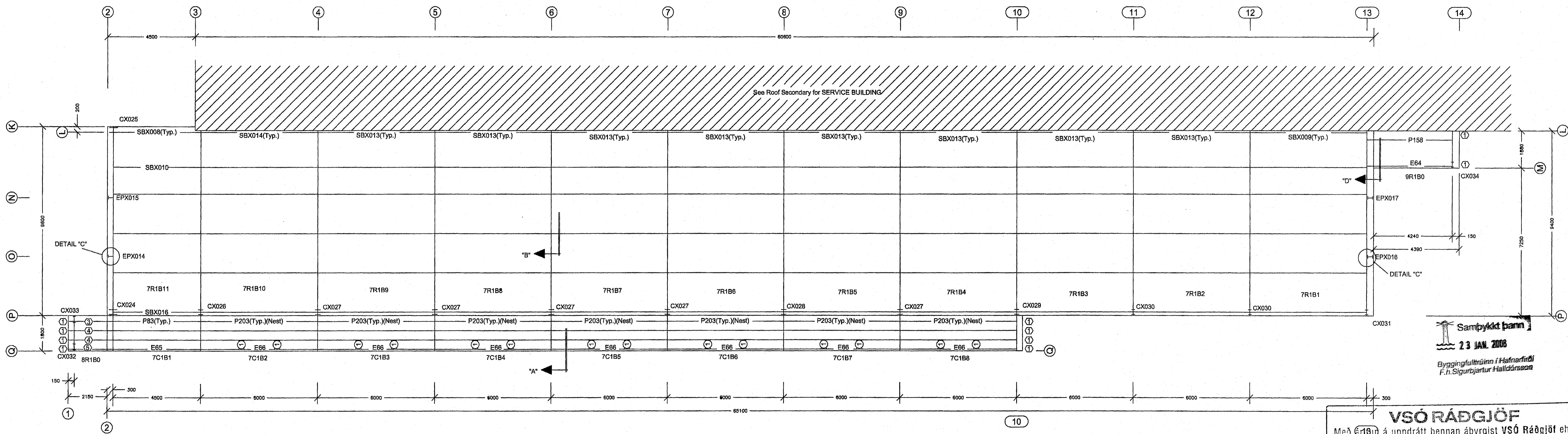
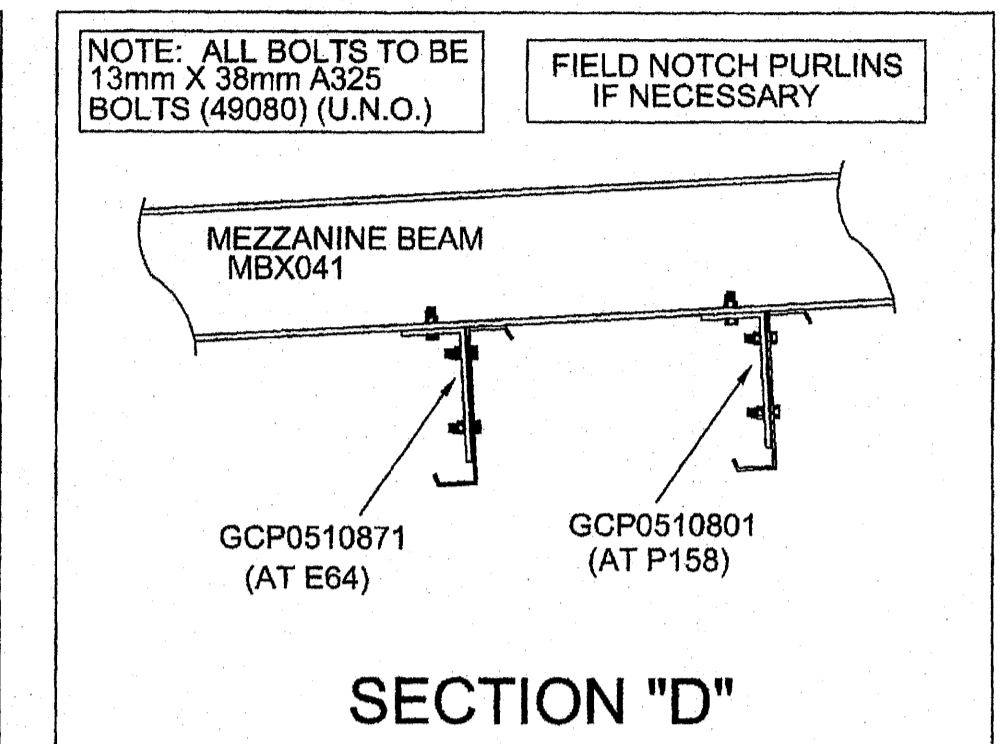
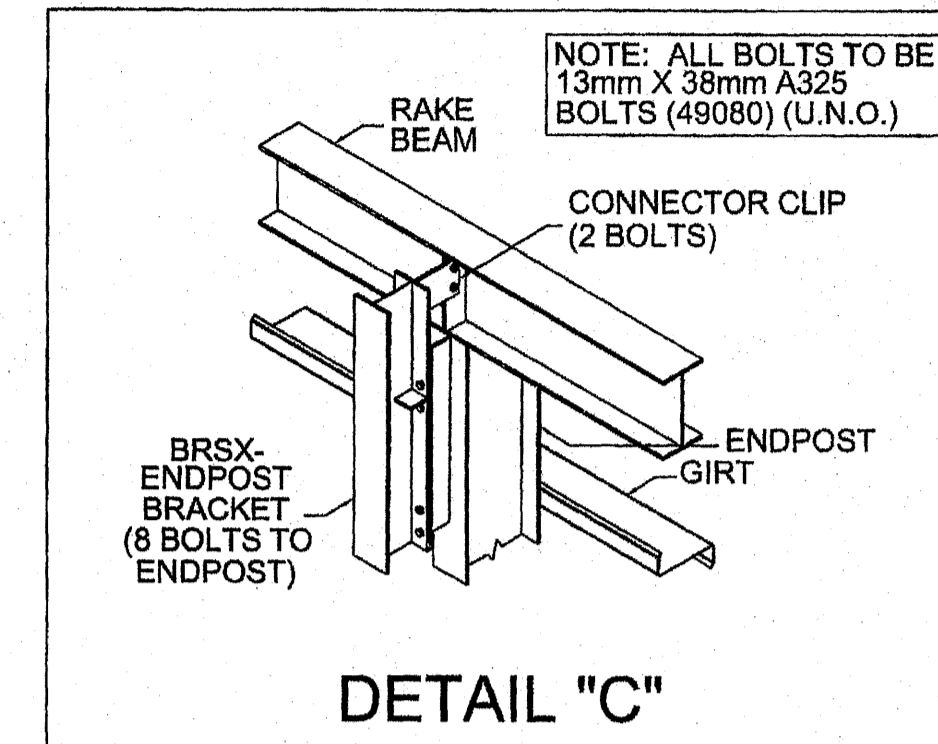
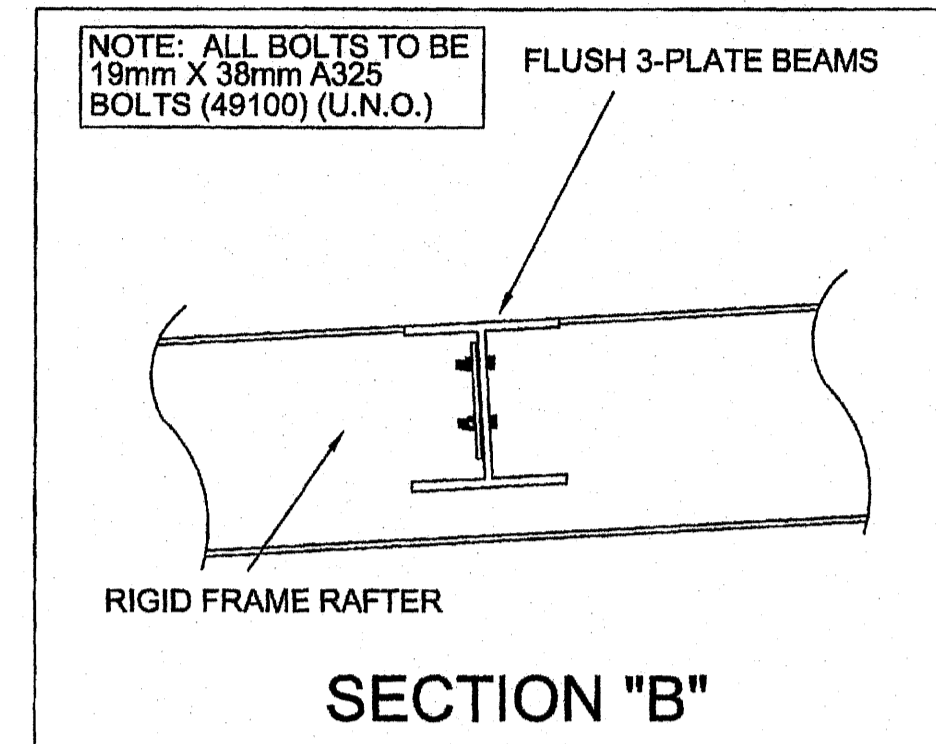
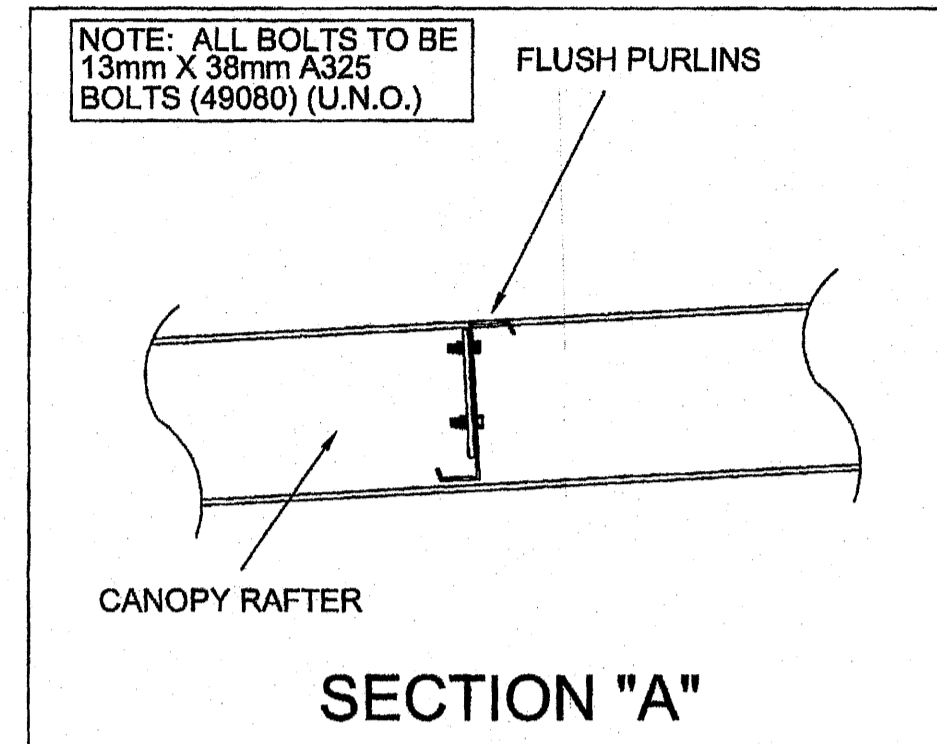
Secondary Part Schedule

Mark	Part	Thick.	Depth	Lap
E64	01EE1410411	0.1200	216	
E65	01EE1403011	0.1200	216	
E66	01EE1902011	0.1200	216	
E73	001HE0704511	0.1200	216	
E74	001EE0704511	0.1200	216	
P158	01P1410411	0.1200	216	
P167	001P0704511	0.1200	216	
P203	01P1902011	0.1200	216	
P83	01P1403011	0.1200	216	

Frame Member Schedule

Part	Width	Thick.	Webthk	Depth1	Approx. Lgth
SBX008	178	8	3	216	4496
SBX009	178	8	3	216	5972
SBX010	178	8	3	216	4496
SBX013	178	8	3	216	5972
SBX014	178	8	3	216	5972
SBX016	178	8	3	216	4496

Composite
 Office
 Entire Floor
 Unbraced
 11'-1 7/8"
 11"
 10'-2 13/16"
 0'-0"
 8'-9 5/16"
 62.66 psf
 0.00 psf Not Reducible
 0.00 psf
 0.00 psf
 360
 240



OFFICE & CANOPY ROOF SECONDARY PLAN

VP Ref: Shape Name = Office area, Shape = Office area, Shape = Office area, Shape = canopy 1, Shape = Canopy 2

Norðurhella 2 - 221 Hafnarfjörður FOR CONSTRUCTION

Samþykkt þann 23 JAN. 2008
 Byggingufulfróinn í Hafnarfirði
 F.h. Sigurbjartur Halldórsson

VSÓ RÁÐGJÖF

Með 6181 á uppdrátt þennan ábyrgist VSÓ Ráðgjöf ehf. kt. 681272-0979, að hönnun sé faglega unnin og í samræmi við lög og reglugerðir um byggingarmál.

1. UNLESS NOTED, USE 1/2 X 1 1/2 A-325 SNUG TIGHTENED BOLTS FOR PURLIN LAP, PURLIN TO FRAME, FLANGE BRACE TO FRAME, AND FLANGE BRACE TO PURLIN CONNECTIONS.
 2. WIND, FLANGE, AND PURLIN BRACING ARE AN INTEGRAL PART OF THE ROOF STRUCTURAL SYSTEM AND SHOULD BE PROPERLY INSTALLED PRIOR TO ERECTION OF WALL AND ROOF SHEETS. REMOVAL OR ALTERATION OF ROOF BRACING WITHOUT PRIOR AUTHORIZATION IS PROHIBITED.

THE VP ENGINEER'S SEAL APPLIES ONLY TO THE WORK PRODUCT OF VP AND DESIGN AND PERFORMANCE REQUIREMENTS SPECIFIED BY VP. THE VP ENGINEER'S SEAL DOES NOT APPLY TO THE PERFORMANCE OR DESIGN OF ANY OTHER PRODUCT OR COMPONENT FURNISHED BY VP EXCEPT TO ANY DESIGN OR PERFORMANCE REQUIREMENTS SPECIFIED BY VP.

THIS DRAWING, INCLUDING THE INFORMATION HEREON, REMAINS THE PROPERTY OF VP BUILDINGS. IT IS PROVIDED SOLELY FOR ERECTING THE BUILDING DESCRIBED IN THE APPLICABLE PURCHASE ORDER AND SHALL NOT BE MODIFIED, REPRODUCED OR USED FOR ANY OTHER PURPOSE WITHOUT PRIOR WRITTEN APPROVAL OF VP BUILDINGS.

THE GENERAL CONTRACTOR AND/OR ERECTOR IS SOLELY RESPONSIBLE FOR ACCURATE, GOOD QUALITY WORKMANSHIP IN ERECTING THIS BUILDING IN CONFORMANCE WITH THIS DRAWING, DETAILS REFERENCED IN THIS DRAWING, ALL APPLICABLE VP ERECTION GUIDES, AND INDUSTRY STANDARDS PERTAINING TO PROPER ERECTION, INCLUDING THE CORRECT USE OF TEMPORARY BRACING.

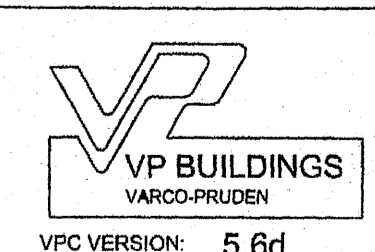
VP Buildings, Inc.
 3200 Players Club Circle Memphis TN 38125

REV	DATE	BY	DESCRIPTION

7/27/2007 11:23:30

OFFICE & CANOPY ROOF SECONDARY PLAN

Norðurhella 2 - Hafnarfirði
 Grunnmynd þakása
 Skrifstofuhluti
 Bl. nr. 38



JOBNO	07-4487
DATE	8/14/2007
DRAWING/CHECK	ELM ELM
PAGE	38

VP VERSION: 5.6d
 FILENAME: Copy of Hafnarfjörður 140rig.VPC

