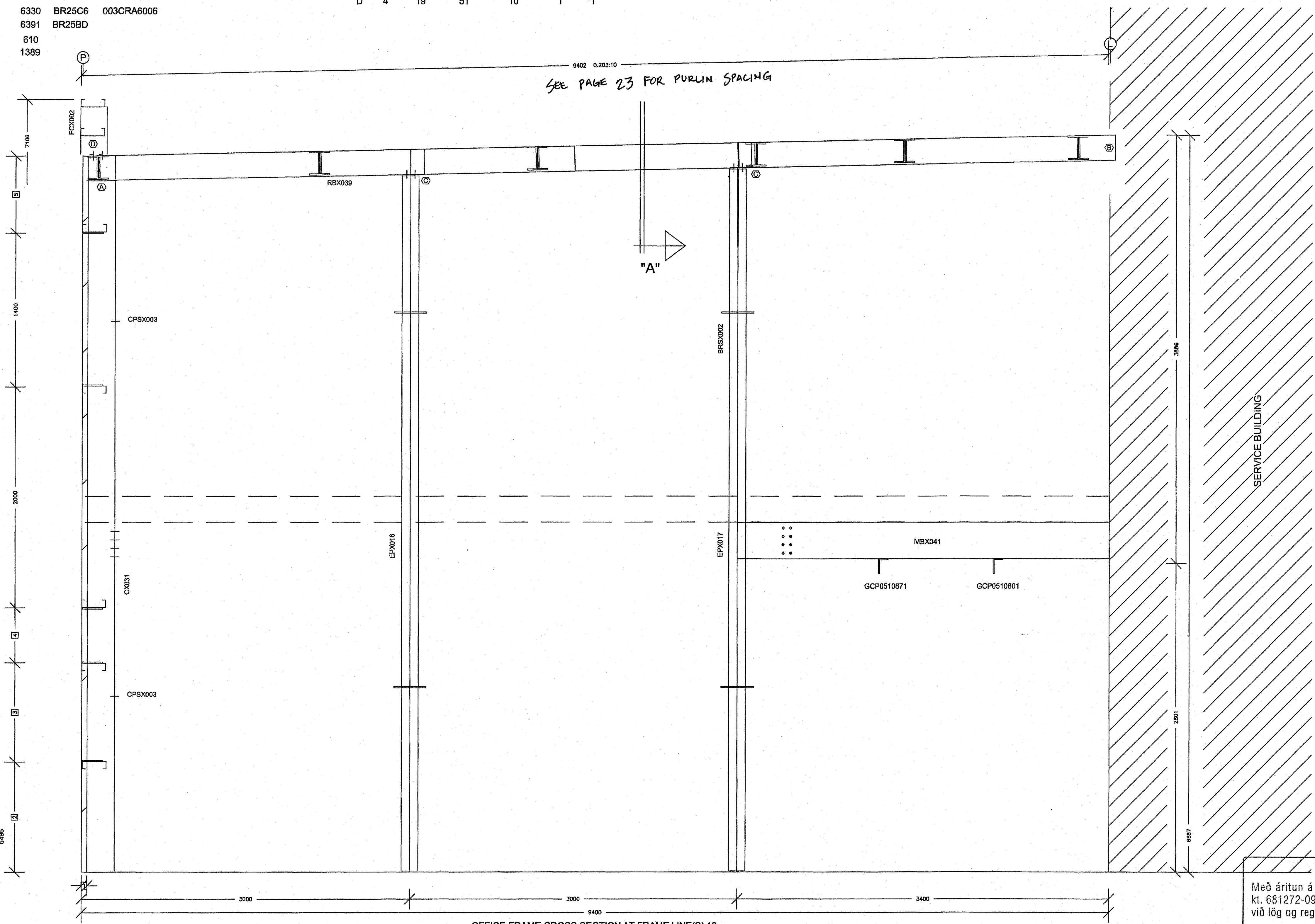
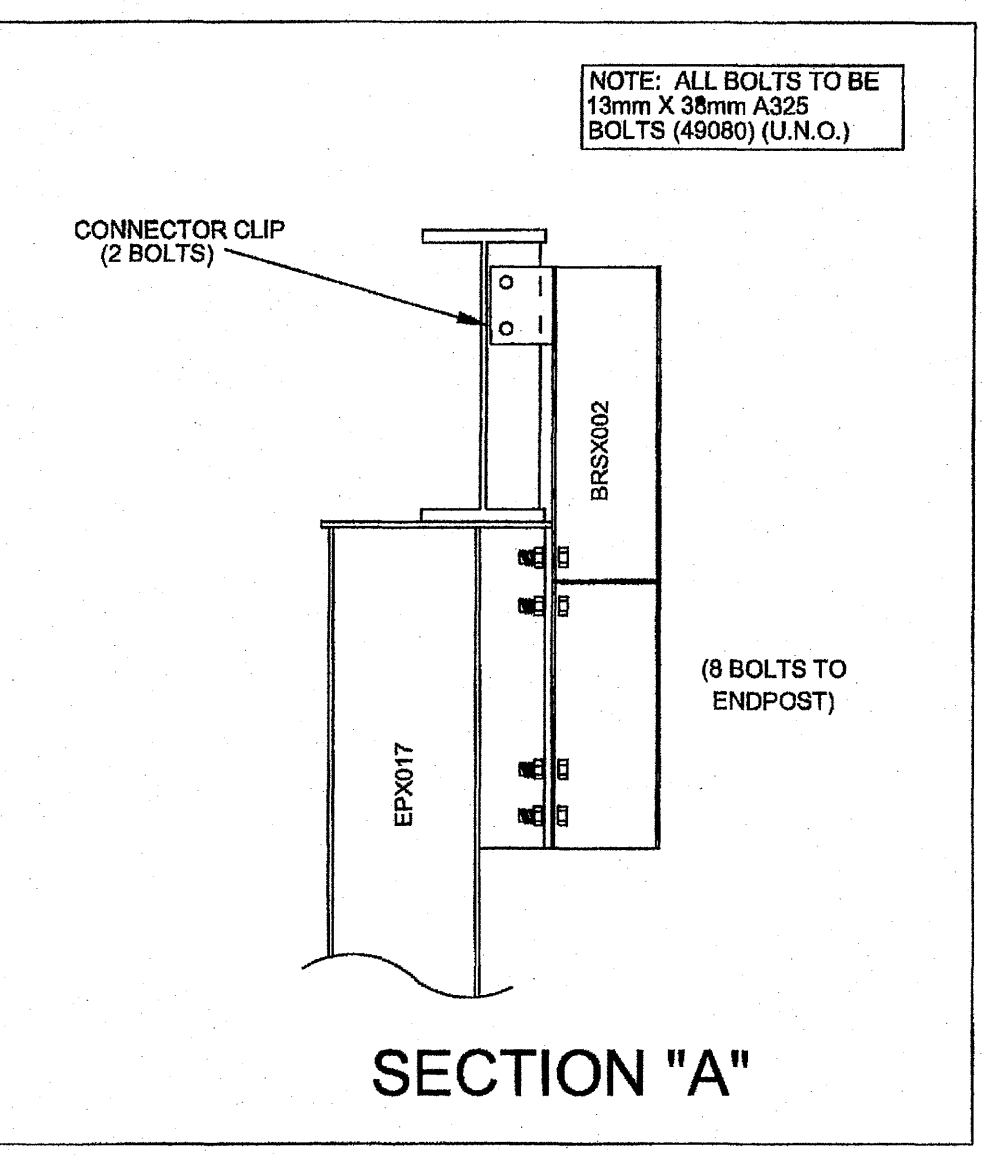


Part	Mem.	Width	Thick.	Webthk	Depth1	Depth2	Approx. Lgth	Detail	Mark No
CX031	1	152	6.35	4.18	250	250	6274		
RBX039	2	152	4.76	3.42	229	229	9445		
	3	152	4.76	3.42	229	229			
	4	152	4.76	3.42	229	229			
	5	152	4.76	3.42	229	229			
EPX016	6	152	6.35	4.18	250	250	6330	BR25C6	003CRA6006
EPX017	7	152	6.35	4.18	250	250	6391	BR25BD	
FCX002		152	4.76	3.42	216	216	610		
BRSX002		127	4.76	3.42	178	178	1389		

A325 Bolt Connection & Plate Schedule										
Id	Qty	Bolt Dia.	Bolt Length	Plate Thick.	Rows Out	Rows In	Tension Bolt	Washer		
A	4	19	51	10	1	1				
B	4	19	51	10	2	-				
C	4	13	38	10	-	-				
D	4	19	51	10	1	1				

Frame Clearances  
 Vert. Clearance at member 1(CX031): 6274  
 Vert. Clearance at member 6(EPX016): 6328  
 Vert. Clearance at member 7(EPX017): 6389  
 Finished Floor Elevation = 100000 (Unless Noted Otherwise)



Samþykkt bann  
 23 JAN. 2008  
 Byggingufulltrúinn í Hafnarfirði  
 F.h. Sigurbjartur Halldórsson

**VSÓ RÁÐGJÖF**  
 Með áritun á uppdrátt þennan ábyrgist VSÓ Ráðgjöf ehf. kt. 681272-0979, að hönnun sé faglega unnin og í samræmi við lög og reglugerðir um byggingarmál.

- 5 695
- 4 500
- 3 900
- 2 1000
- 1 50

- Dimension Key
- USE 1/2 X 1 1/2 A325 SNUG TIGHTENED BOLTS FOR PURLIN TO FRAME, GIRT TO FRAME, AND GIRT TO CLIP CONNECTIONS UNLESS NOTED OTHERWISE.
  - SLOT REINFORCEMENT PLATES NEED NOT BE LOCATED ON THE SAME SIDE OF THE WEB AS THE HILLSIDE WASHER.

THE VP ENGINEER'S SEAL APPLIES ONLY TO THE WORK PRODUCT OF VP AND DESIGN AND PERFORMANCE REQUIREMENTS SPECIFIED BY VP. THE VP ENGINEER'S SEAL DOES NOT APPLY TO THE PERFORMANCE OR DESIGN OF ANY OTHER PRODUCT OR COMPONENT FURNISHED BY VP EXCEPT TO ANY DESIGN OR PERFORMANCE REQUIREMENTS SPECIFIED BY VP.

THIS DRAWING, INCLUDING THE INFORMATION HEREON, REMAINS THE PROPERTY OF VP BUILDINGS. IT IS PROVIDED SOLELY FOR ERECTING THE BUILDING DESCRIBED IN THE APPLICABLE PURCHASE ORDER AND SHALL NOT BE MODIFIED, REPRODUCED OR USED FOR ANY OTHER PURPOSE WITHOUT PRIOR WRITTEN APPROVAL OF VP BUILDINGS.

THE GENERAL CONTRACTOR AND/OR ERECTOR IS SOLELY RESPONSIBLE FOR ACCURATE, GOOD QUALITY WORKMANSHIP IN ERECTING THIS BUILDING IN CONFORMANCE WITH THIS DRAWING, DETAILS REFERENCED IN THIS DRAWING, ALL APPLICABLE VP ERECTION GUIDES, AND INDUSTRY STANDARDS PERTAINING TO PROPER ERECTION, INCLUDING THE CORRECT USE OF TEMPORARY BRACING.

VP Buildings, Inc.			
3200 Players Club Circle Memphis TN 38125			
REV	DATE	BY	DESCRIPTION
NTS			
8/3/2007		9:01:58	

FOR CONSTRUCTION

NAME: \_\_\_\_\_ NAFN: \_\_\_\_\_ KENNITALA: \_\_\_\_\_

**OFFICE FRAME CROSS SECTION AT FRAME LINE(S) 13**

Norðurhella 2 - Hafnarfirði  
 Stálrammi í línu 13  
 Skrifstofuhluti  
 Bl. nr. 33

VP BUILDINGS  
 VARCO-PRUDEN

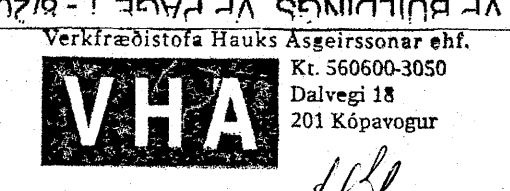
JOBNO 07-4487  
 DATE 8/14/2007  
 DRAWN/CHECK ELM  
 PAGE 33

VPC VERSION: 5.6d

FILENAME: 07-4487-EP2-Office&Mezzanine.VPC

8/3/2007 9:01:58

FILENAME: 07-4487-EP2-Office&Mezzanine.VPC



EYKT  
 26 OCT 2007  
 MOTTEKID