

Frame Member Schedule

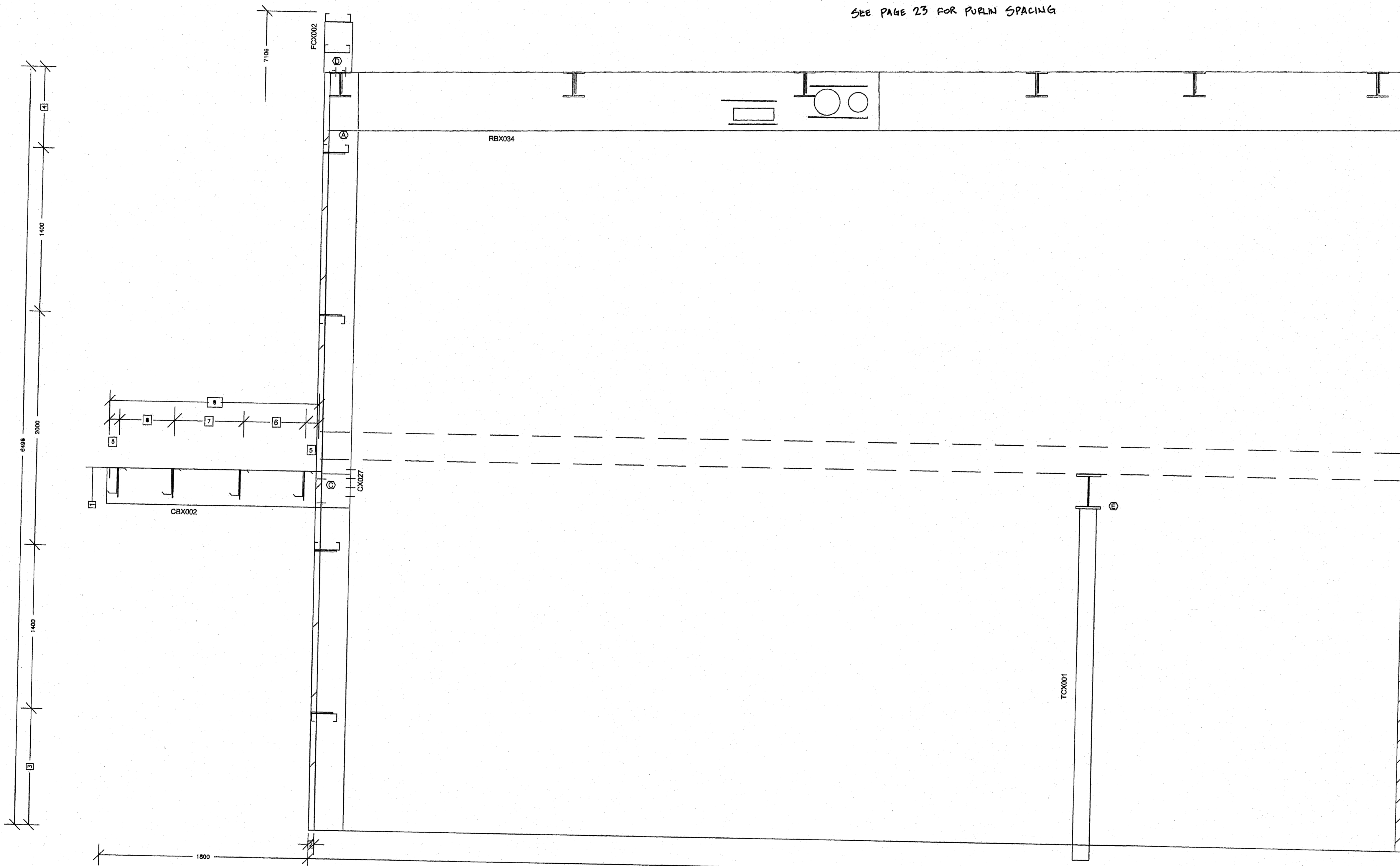
Part	Mem.	Width	Thick.	Webthk	Depth1	Depth2	Approx. Lgth	
CBX002	1001	127	6.35	6.35	305	305	1849	
CX027	1	254	9.52	4.18	250	250	6002	
RBX034	2	279	12.70	4.76	500	500	9445	
	3	279	12.70	4.76	500	500		
FCX002		152	4.76	3.42	216	216	610	
TCX001		102mm X 102mm X 8mm SQUARE TUBE COLUMN					2934	

CA325 Bolt Connection & Plate Schedule

Id	Qty	Bolt Dia.	Bolt Length	Plate Thick.	Rows Out	Rows In	Tension Bolt	Washer
A	4	19	51	13	1	1		
B	4	19	51	10	2	-		
C	4	25	51	19	1	1		
D	4	19	51	10	1	1		
E	4	19	51	19	1	1		

Frame Clearances  
 Vert. Clearance at member 1(CX027): 6002  
 Finished Floor Elevation = 100000 (Unless Noted Otherwise)

SEE PAGE 23 FOR PURLIN SPACING



- 9 1800 0.012:10
- 8 497
- 7 571
- 6 554
- 5 89
- 4 695
- 3 1000
- 2 49
- 1 2750

- Dimension Key
- USE 1/2 X 1 1/2 A325 SNUG TIGHTENED BOLTS FOR PURLIN TO FRAME, GIRT TO FRAME, AND GIRT TO CLIP CONNECTIONS UNLESS NOTED OTHERWISE.
  - SLOT REINFORCEMENT PLATES NEED NOT BE LOCATED ON THE SAME SIDE OF THE WEB AS THE HILLSIDE WASHER.

THE VP ENGINEER'S SEAL APPLIES ONLY TO THE WORK PRODUCT OF VP AND DESIGN AND PERFORMANCE REQUIREMENTS SPECIFIED BY VP. THE VP ENGINEER'S SEAL DOES NOT APPLY TO THE PERFORMANCE OR DESIGN OF ANY OTHER PRODUCT OR COMPONENT FURNISHED BY VP EXCEPT TO ANY DESIGN OR PERFORMANCE REQUIREMENTS SPECIFIED BY VP.

THIS DRAWING, INCLUDING THE INFORMATION HEREON, REMAINS THE PROPERTY OF VP BUILDINGS. IT IS PROVIDED SOLELY FOR ERECTING THE BUILDING DESCRIBED IN THE APPLICABLE PURCHASE ORDER AND SHALL NOT BE MODIFIED, REPRODUCED OR USED FOR ANY OTHER PURPOSE WITHOUT PRIOR WRITTEN APPROVAL OF VP BUILDINGS.

THE GENERAL CONTRACTOR AND/OR ERECTOR IS SOLELY RESPONSIBLE FOR ACCURATE, GOOD QUALITY WORKMANSHIP IN ERECTING THIS BUILDING IN CONFORMANCE WITH THIS DRAWING, DETAILS REFERENCED IN THIS DRAWING, AND INDUSTRY STANDARDS PERTAINING TO PROPER ERECTION, INCLUDING THE CORRECT USE OF TEMPORARY BRACING.

REV	DATE	BY	DESCRIPTION
NTS			

**FOR CONSTRUCTION**

VP Buildings, Inc.  
 3200 Players Club Circle Memphis TN 38125

**OFFICE FRAME CROSS SECTION AT FRAME LINE(S) 5**

Norðurhella 2 - Hafnarfirði  
 Stálrammi í línu 5  
 Skrifstofuhluti  
 Bl. nr. 25

VP BUILDINGS  
 VARCO-PRUDEN  
 VPC VERSION: 5.6d

JOBNO: 07-4487  
 DATE: 8/14/2007  
 DRAWN/CHECK: ELM ELM  
 PAGE: 25

Sámbykkt þann 23 JAN. 2008  
 Byggingufulltrúinn í Hafnarfirði  
 E. Þ. Sigurbjartur Halldórsson

**VSORÁÐGJÖF**  
 Með áritun á upprátt þennan ábyrgist VSÓ Ráðgjöf ehf. kt. 681272-0979, að hönnun sé faglega unnin og í samræmi við lög og reglugerðir um byggingarmál.