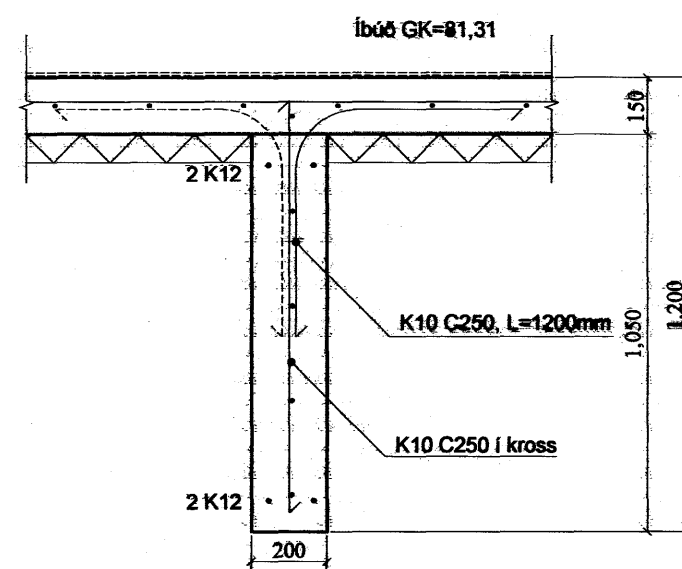
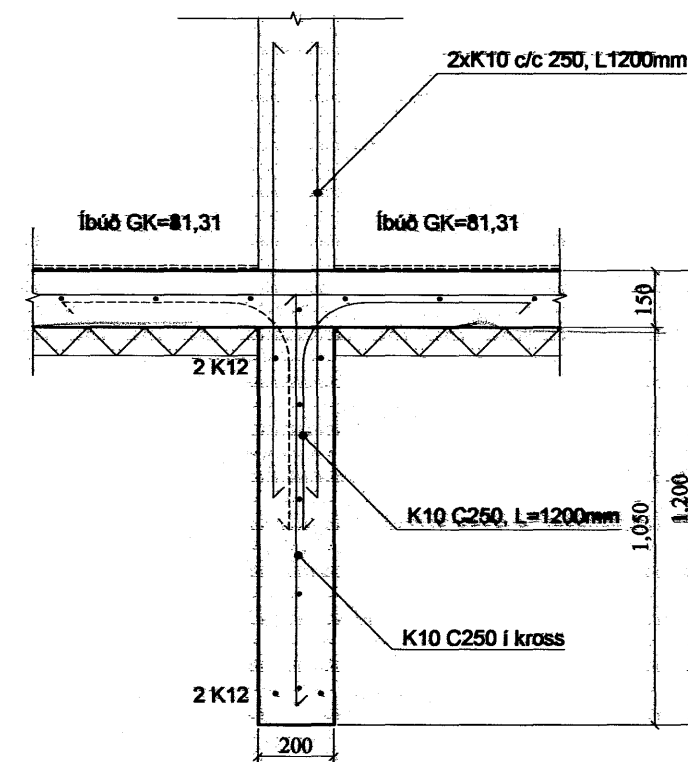


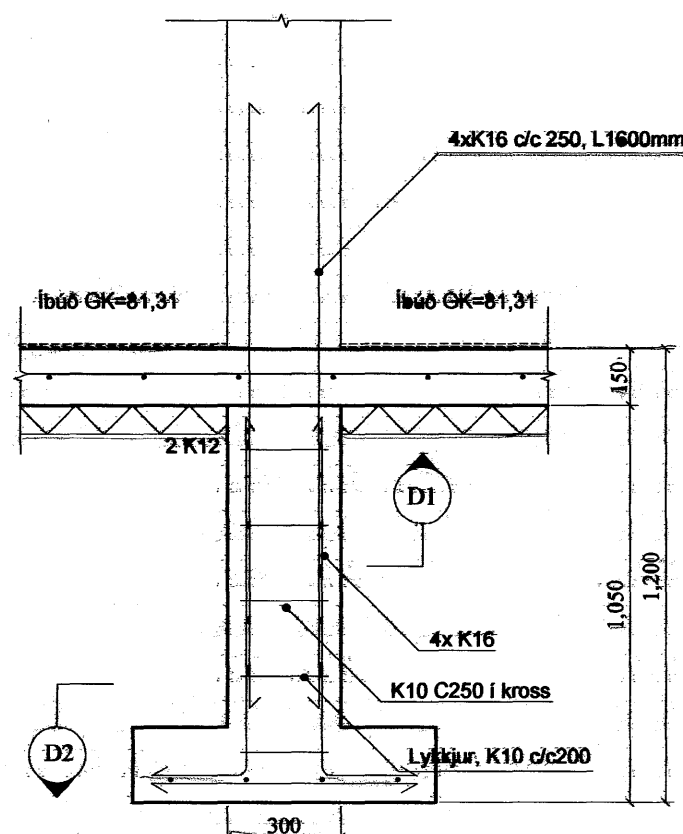
A SNÍÐ
161-2 1:20



B SNÍÐ
161-2 1:20

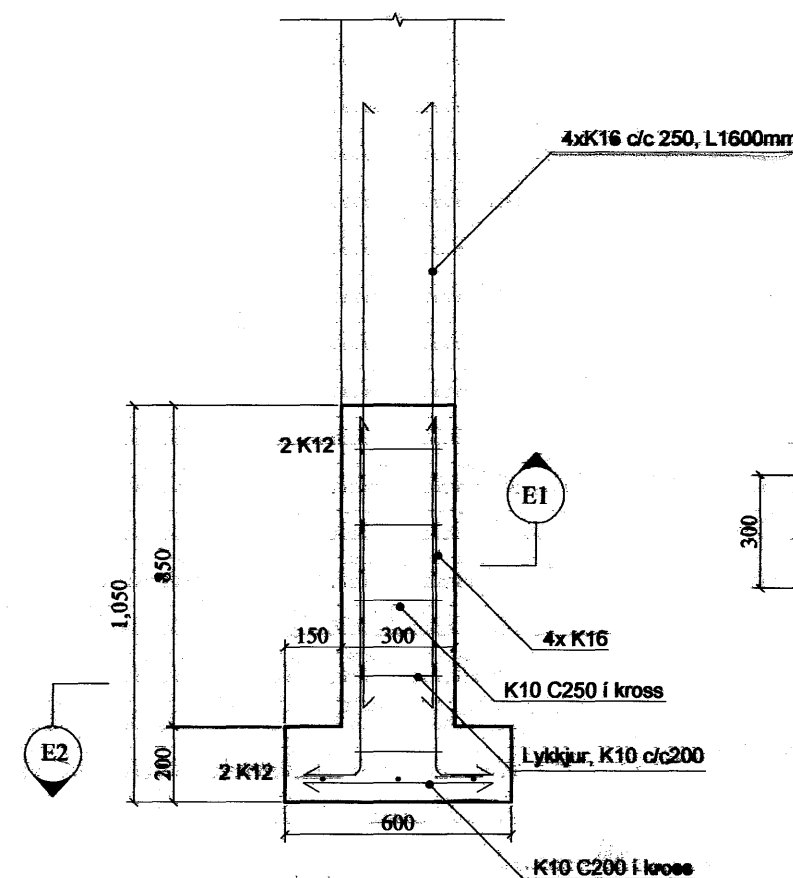
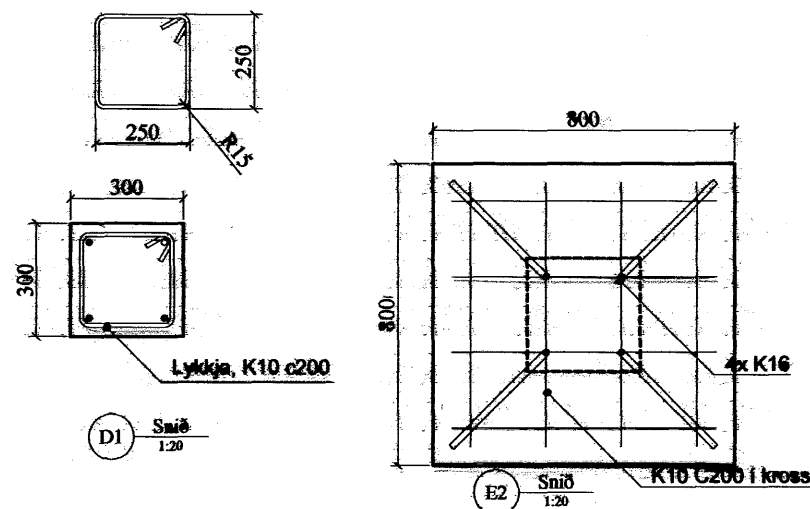


C SNÍÐ
161-2 1:20



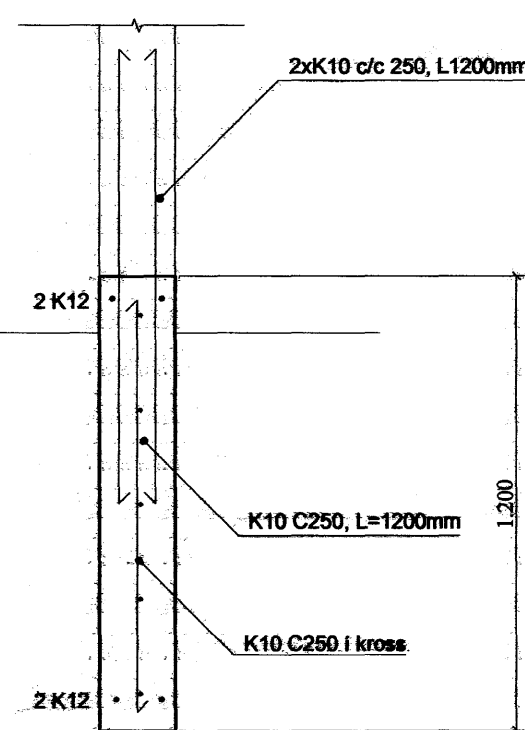
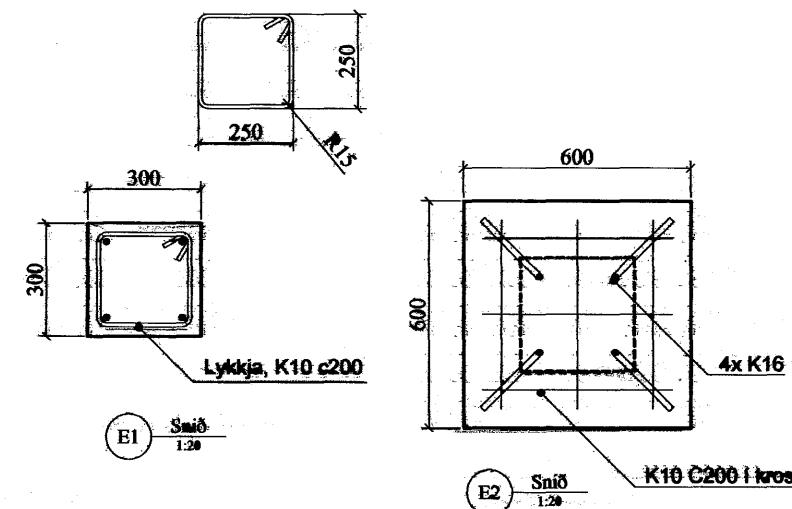
D SNÍÐ
161-2 1:20

Lykkja, K10 c200:

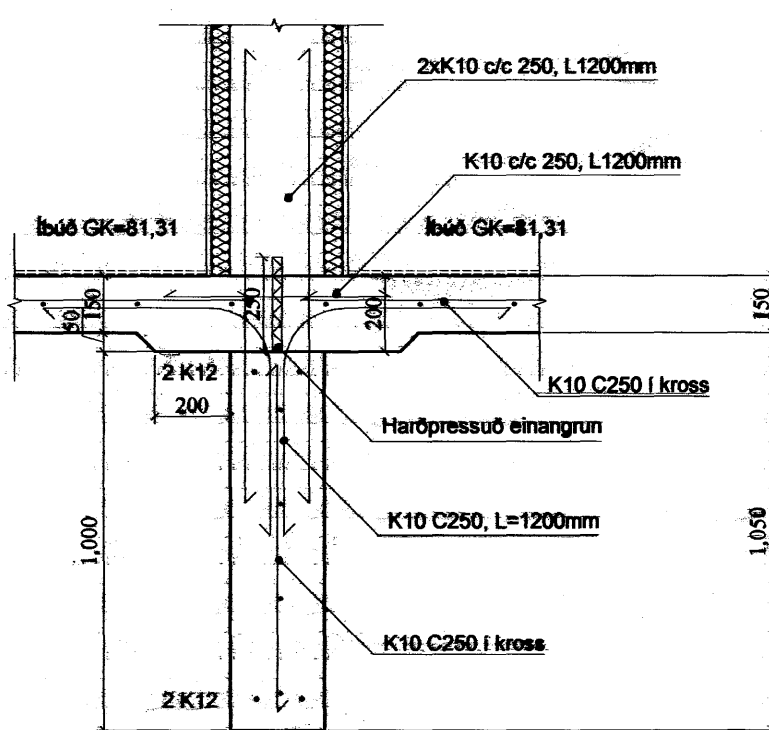


E SNÍÐ
161-2 1:20

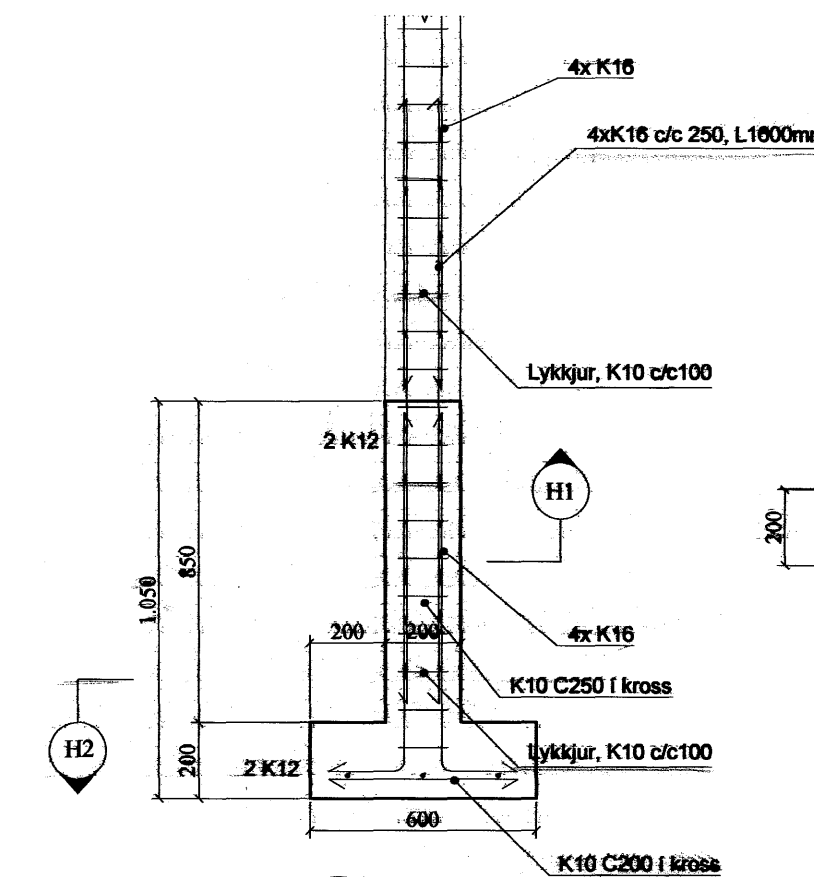
Lykkja, K10 c200:



F SNÍÐ
161-2 1:20

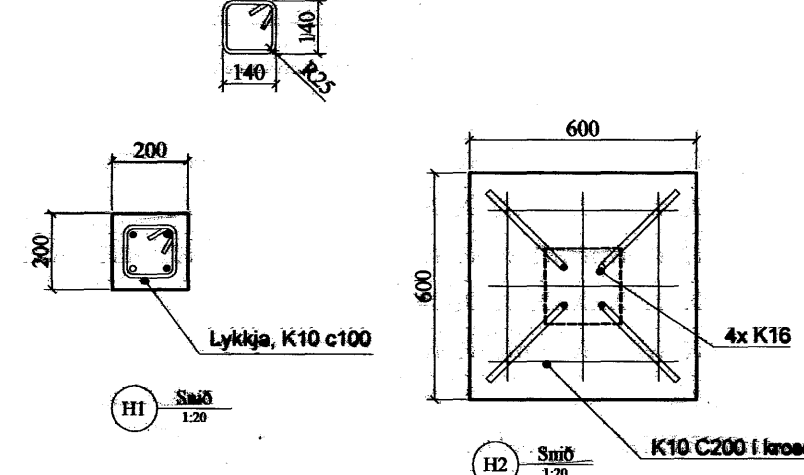


G SNÍÐ
161-2 1:20



H SNÍÐ
161-2 1:20

Lykkja, K10 c100:



Athmennt:

Öff mál skulu staðfest skv. aðaltekningum. Ef eitthvert misræmi er skulu aðaltekningar vera ráðandi, þó þer að láta hönnuði vita af misræmi. Öll mál eru í millimetrum, nema annað komi fram.

Skýringar - Steinsteypa og bendistál

Styrkleikaflokkar efnis:

Í sökklum, veggjum og botnplötu.

Steypa: C25/30-22-S3-2b
Bendistál: B500C

-Ef sökkull er steypur beint á klöpp má hæð hans fara niður í allt að 400mm frá efri brún plötu

Samþykkt þann
10. DES. 2007

Byggingulltrúinn í Hafnarfirði
F.h. Sigurbjartur Halldórsson

Br. nr.	Dags.	Af.	Breyting
(A)	30.11.07	JÁG	Steyptum súlum bætt við inngang
(B)			
(C)			
(D)			
(E)			

Hliðarás 15-17
220 Hafnafjörður

Teikn nr:
163

Sérteikningar-Burðarvirki
Deili

Frumstærð:
A2

Dags: 30.11.2007 Skv: 1:20
Samþ: 020162-3099 V.nr: 07 057 Teikn: AI

VGS
VERKFRÆÐISTOFA
GUÐJÓNS P. SIGFÚSSONAR EHF.
AUSTURVEGI 42, 2.HÆÐ,
800 SELFOSSÍ
S: 4B2 2805, F: 4B2 3818
NETFANG: VGS@VGS.IS