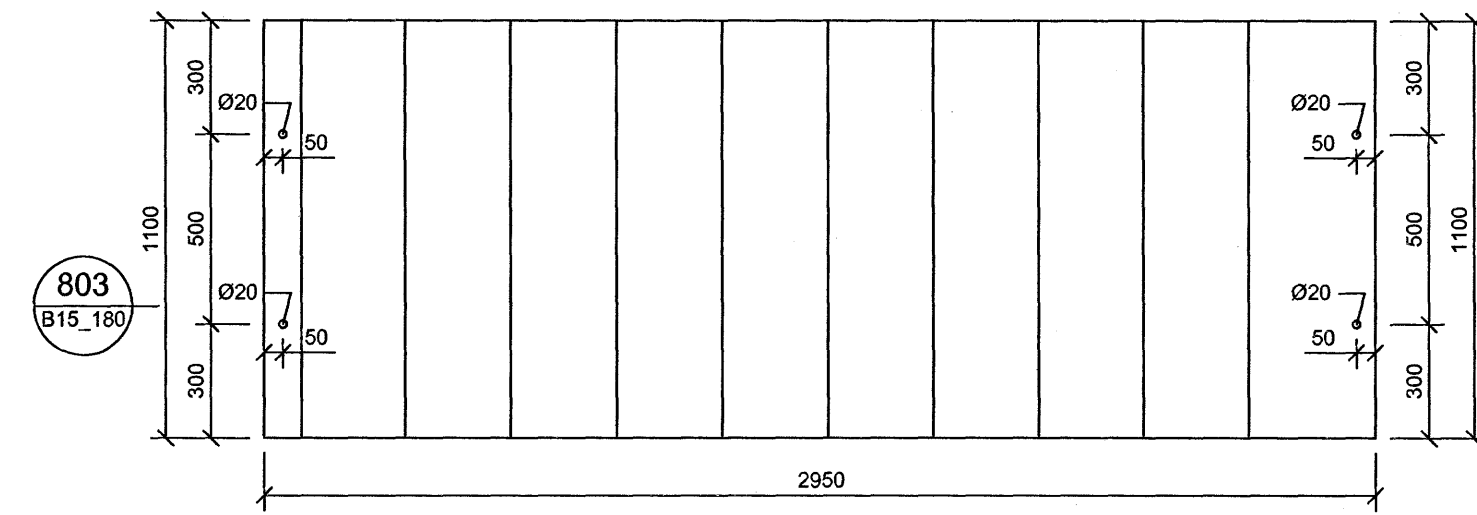
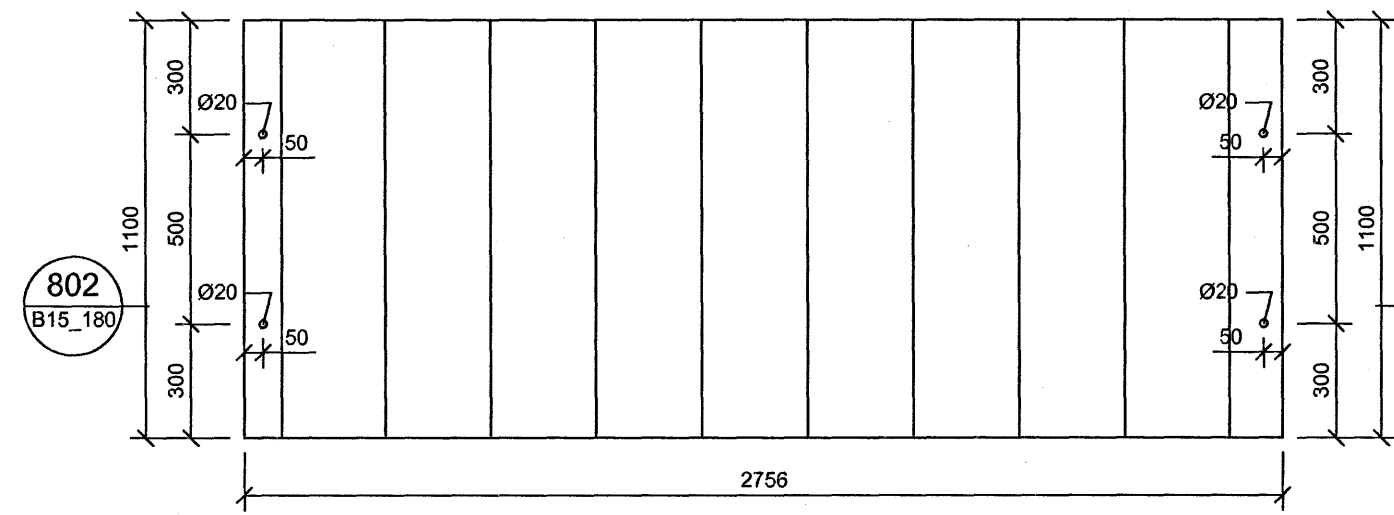
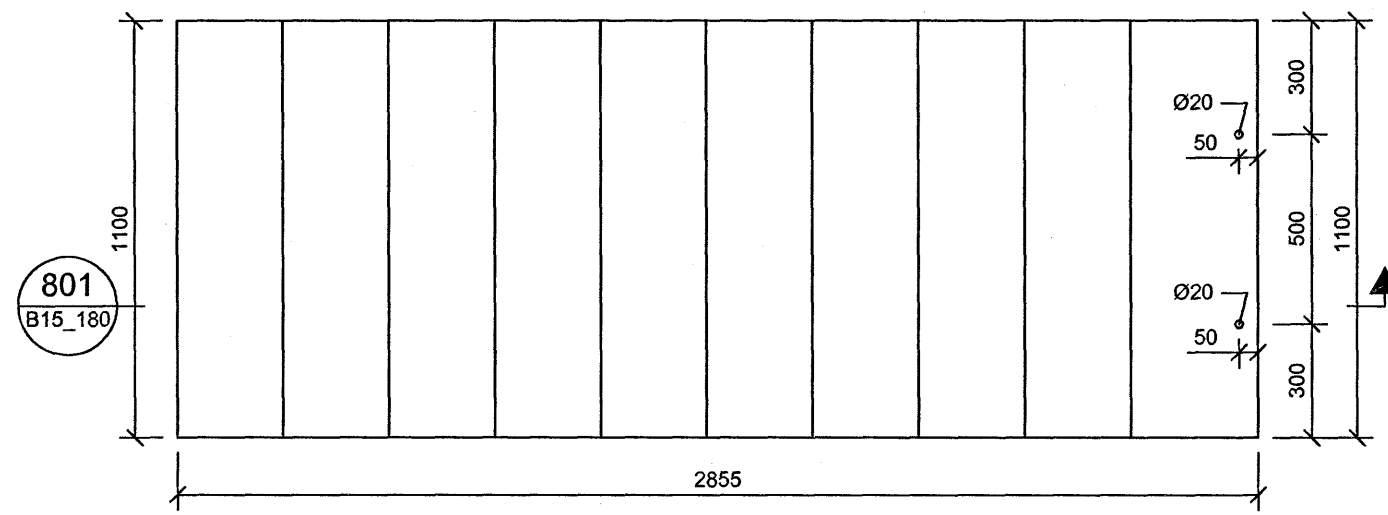


STIGAHLAUP ST1 - 1 STK 1:20

STIGAHLAUP ST2 - 4 STK 1:20

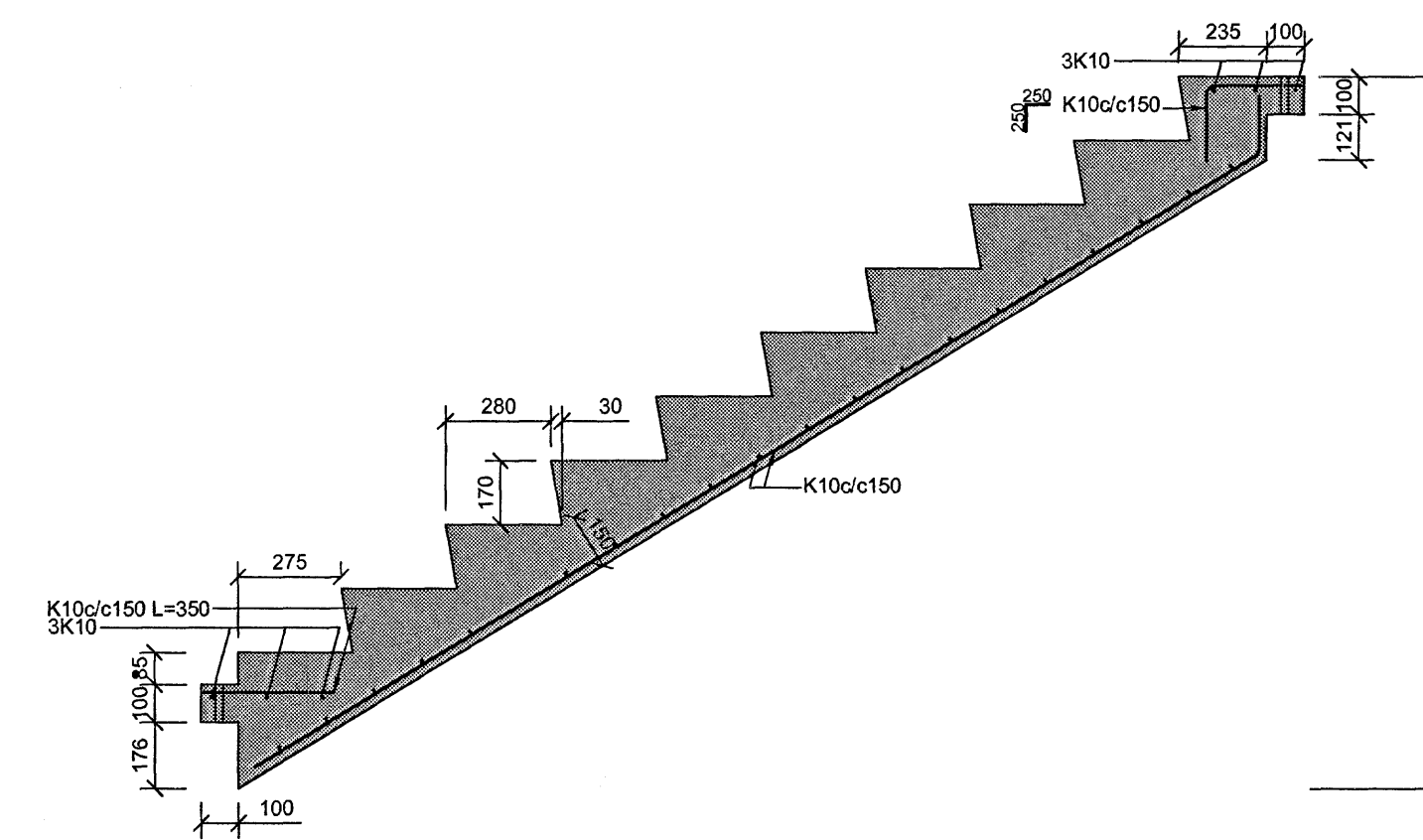
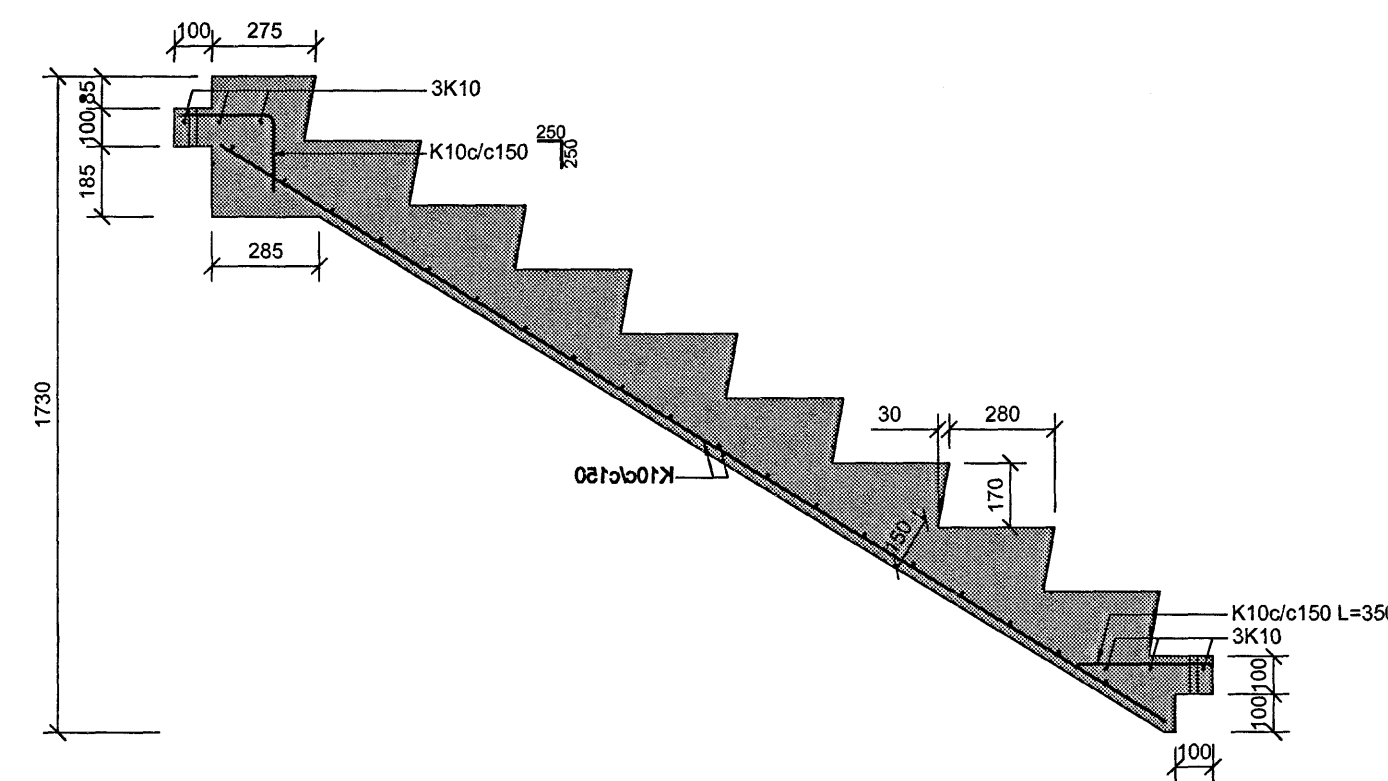
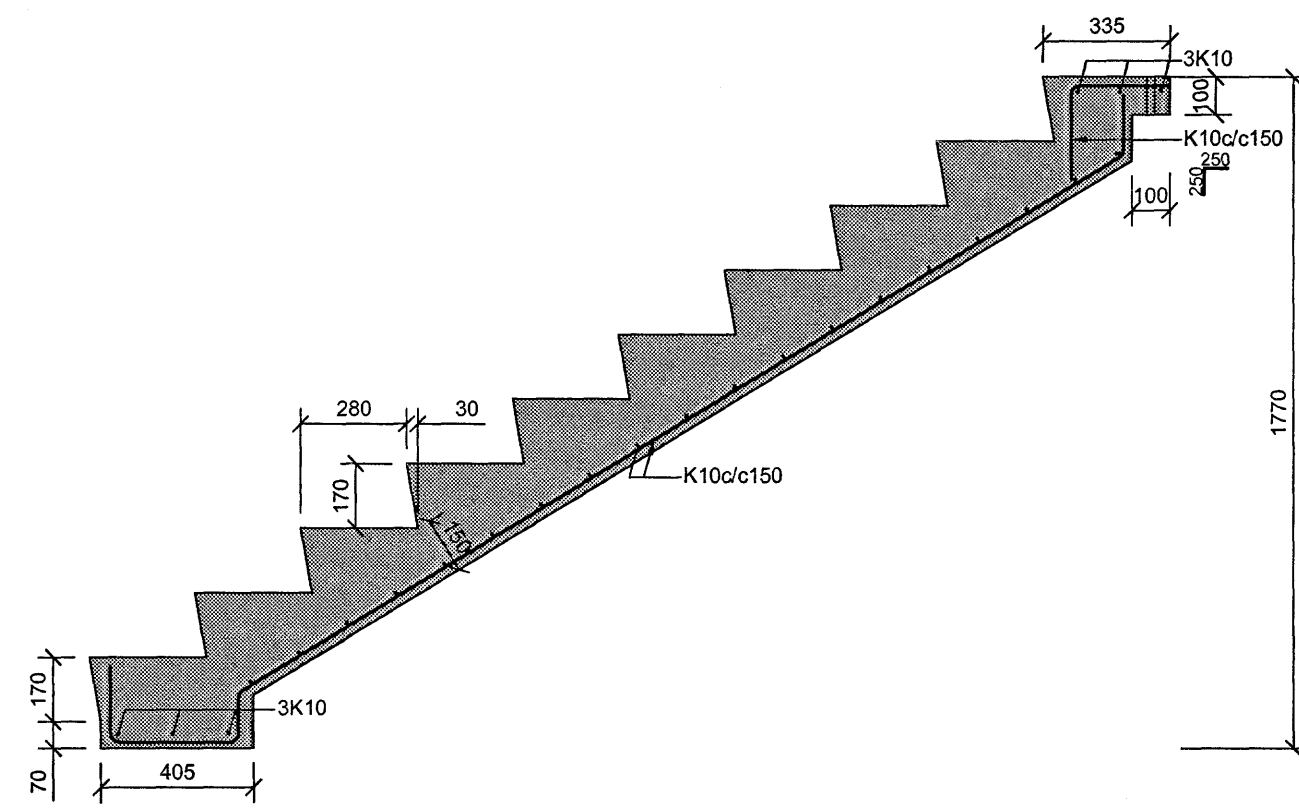
STIGAHLAUP ST3 - 3 STK 1:20



801 SNID 1:20

802 SNID 1:20

803 SNID 1:20



ÁRITUN SAMRÆMINGARFRÓÐULIÐAR

 Kl. 110457-2789

STEYPA Í STIGA:

BROTÞOLSFLOKKUR:	C25/30
SEMENTSMAGN:	MINNST 320 kg/m³
VATNSSEMENTSTALA:	< 0,50
HÁMARKSSTEINASTÆRÐ:	25 mm
LOFTNIHALD:	5 - 6%
FJARL STUÐULL LOFTS:	< 0,25mm
LÁGMARKSHULA:	25 mm

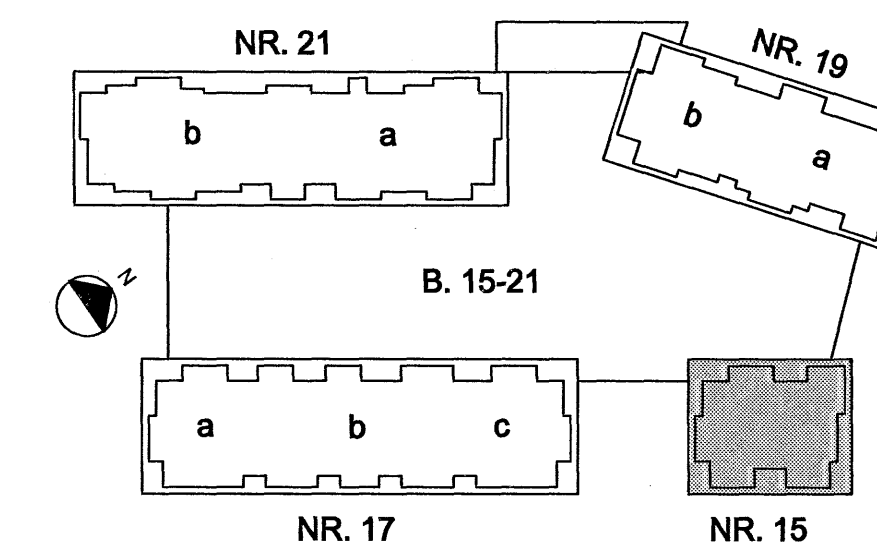
Byggingafræðingur
 Gísli Þórunn
 22.12.2006

BR. DAGS. BREYTING REKNI. TEKNI.

NORÐURBAKKI 15

BURDARVIRKI
 SÉRMYNDIR AF STIGUM

MÖV.: 1:20
 DAGS.: 01.12.2006
 HANNAÞEYKN.: HEYGG
 VERKNR.: 05104



íAV
 Kennitala: 400105-1400
 Lynghóla 4,
 110 Reykjavík
 Sími: 517-0280
 Draðimi: 517-0091
 Netfang: conis@conis.is
 Vefvang: www.conis.is

YFIRFARIR: 30
 SAMÞYKKT:
 KENNITALA: 130457-4458
 TEKNI NR.: B(15)_180