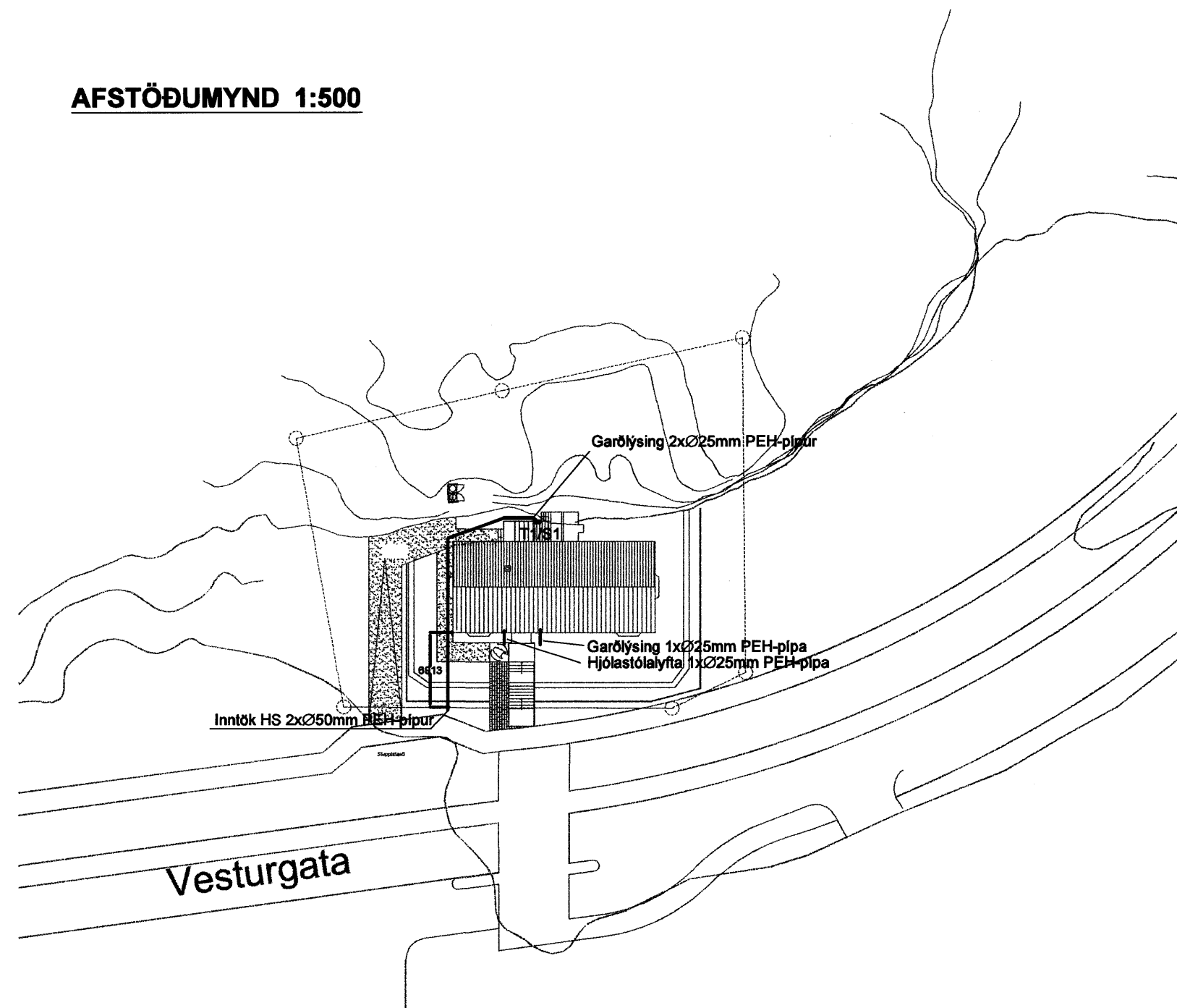
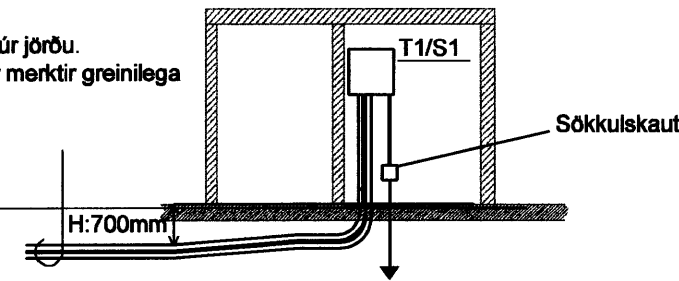


AFSTÖÐUMYND 1:500



SNID A
1:100 R0 000

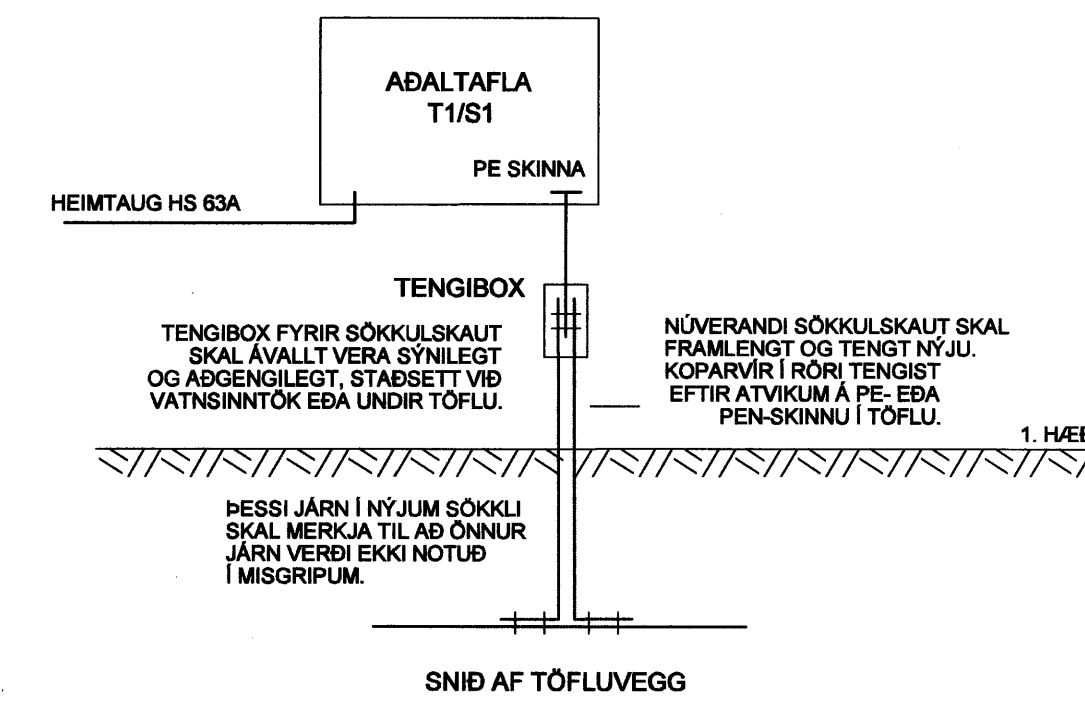
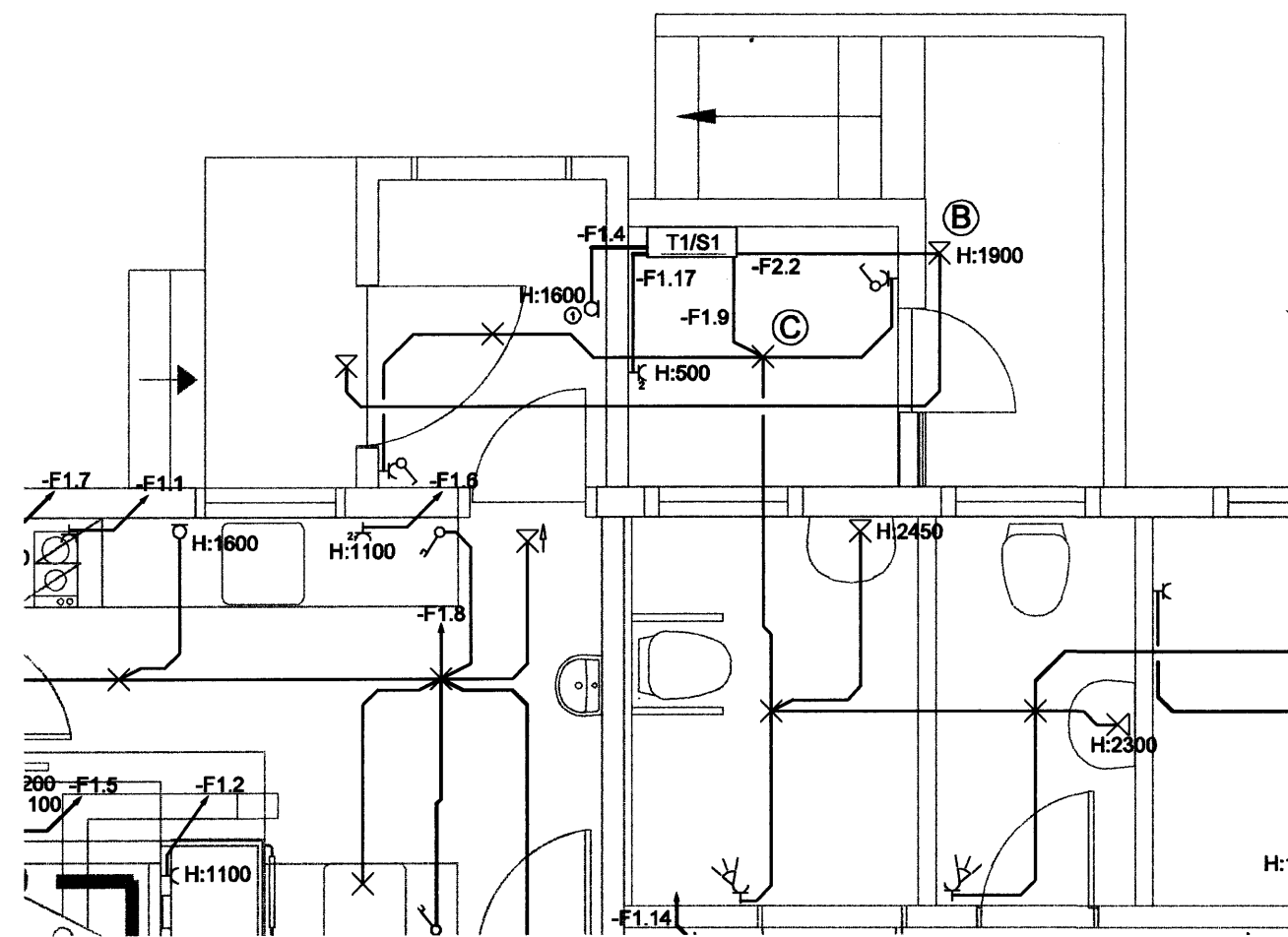
Rafloagn HS 1x50mm plaströr
Fjarskipti 1x50mm plaströr
Rör leggst að lóðarmörkum og upp úr jörðu.
Ganga skal vel frá rörendum og þeir merktir greinilega
Garðýsing 3x25mm plaströr
Hólastöðalyfta 1x25mm plaströr



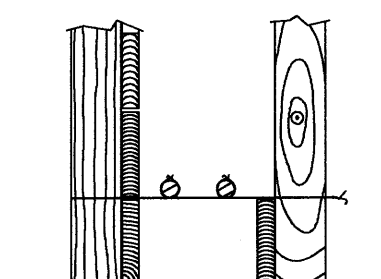
SKÝRINGAR

- (B) Útljós 1x18 W
- (C) Flúrlampi 1x35 W

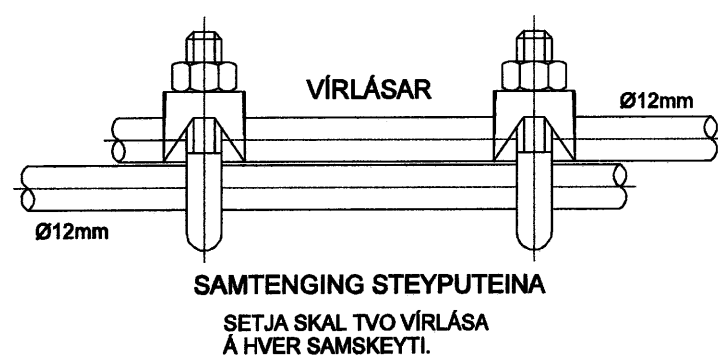
GRUNNMYND 1:50



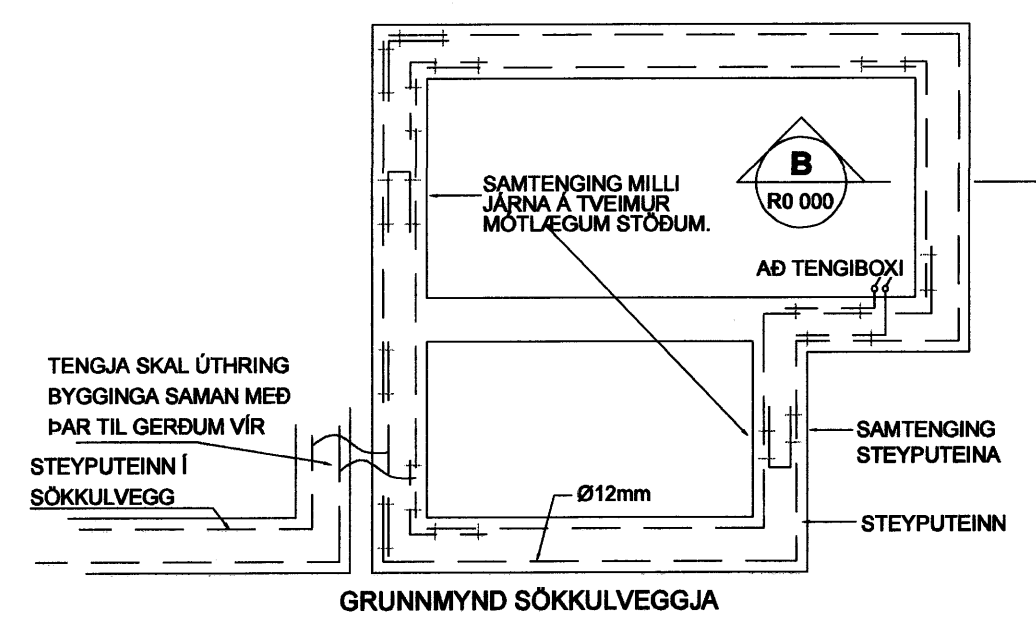
SNID B
R0 000



SNID B Í SÖKKULVEGG
SÝND ERU 2 NEDSTU STEYPU-
STYRKJARJÄRNIN Í STEYPUMÖTI
OFAN Á NEDSTU MÓTAVIRUM.



**SÖKKULSKAUT
DÆMIGERÐUR FRÁGANGUR**



BATTERIÐ

VERK:	0530-17
MÖTT:	10.10.07
SAMP:	
SKÝRING:	

Úg. Dags. Skýring Hannad/Virfarð



VERKFRÆÐISTOFA

BÆJARHAUN 20 · 220 HAFNARFJÖRÐUR · KENNIT. 710796-2899
vab@vab.is · Sími 585 8600 · Fax 585 8610 · www.vab.is

Áritun sérhönnuðar Ragnar Víktor Karlsson Kt: 220470 5129					
Verkefni VESTURGATA 32 HAFNARFIRÐI					
Verktali Rafkerfi Heimtaug og sökkulskaut Sníð, grunn- og afstöðumynd					
Hannad SF	Telknað SF	Yfirfarð RVK	Kvartí RVK	Síða A1	-
Daga 05.10.07	Verkefni 06878	Telkning R0-11	Útgáfa -		

V:\2006\06878\06878 - Vesturgata 32\heita\06878-R0-1.dwg