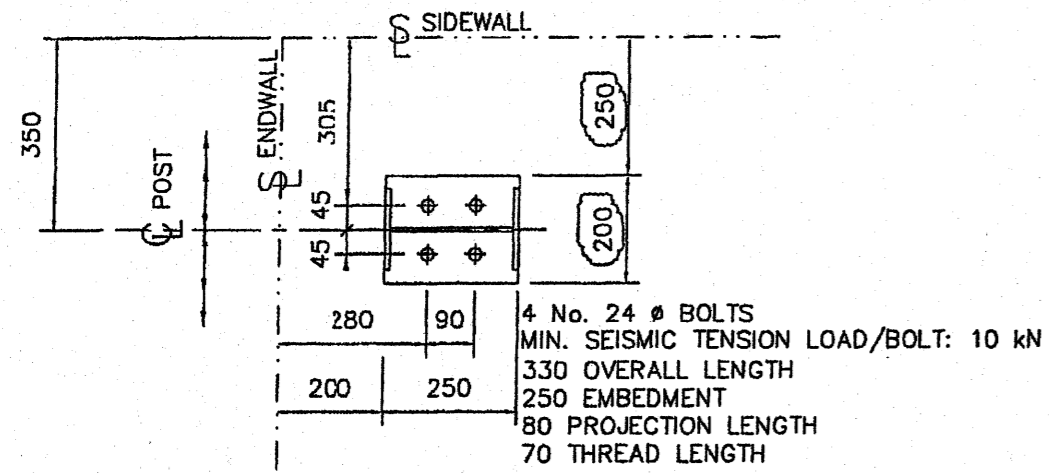
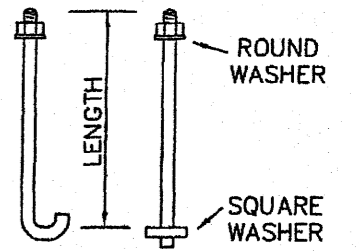


**NOTES**

- 1) DO NOT SCALE  
IF IN DOUBT - ASK.
- 2) ALL DIMENSIONS  
IN MILLIMETERS

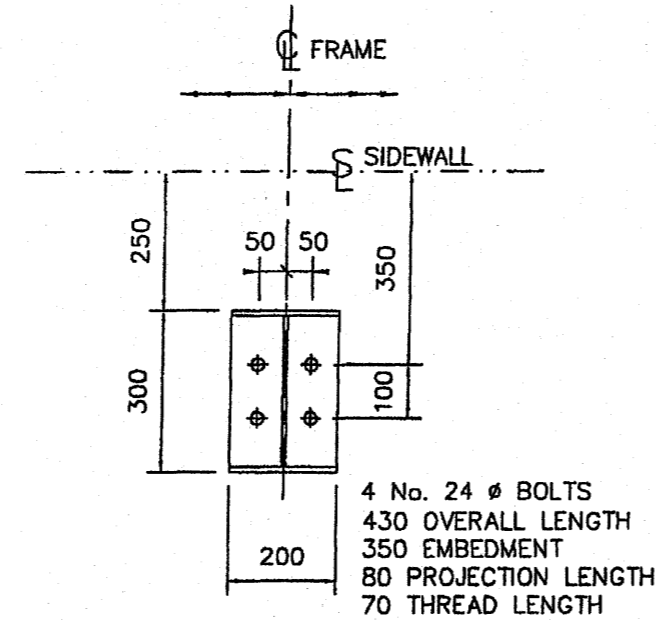
**GENERAL NOTES**

1. ALL DIMENSIONS ARE IN MILLIMETERS.
2. GIVE TOP OF FOUNDATION A TROWEL FINISH. FOUNDATION MUST BE SQUARE, LEVEL & SMOOTH.
3. ANCHOR BOLTS TO HAVE A FLAT ROUND WASHER UNDER TOP NUT & MINIMUM 80 SQUARE WASHER AT THE BOTTOM. IF HOOK TYPE BOLTS ARE BEING USED, THE STATED LENGTH IS TO THE START OF THE HOOK.
4. ANCHOR BOLTS MUST BE LOCATED BY MEANS OF A TEMPLATE. DO NOT HAND SET ANCHOR BOLTS
5. S DENOTES STRUCTURAL LINE WHICH IS THE EXTERIOR FACE OF THE STRUCTURALS FROM WHICH ALL ANCHOR BOLTS ARE LOCATED.
6. MAXIMUM ALLOWABLE FOUNDATION TOLERANCE IS ± 3mm IN PLAN & ELEVATION.
7. FOR FRAME REACTIONS SEE DESIGN CALCULATIONS.
8. ALL CONCRETE TO HAVE A MINIMUM CUBE STRENGTH OF 20 N/mm<sup>2</sup> AFTER 28 DAYS.
9. WHERE BUTLER BUILDING SYSTEMS ARE NOT SUPPLYING THE ANCHOR BOLTS, ALL EMBEDMENTS SHOULD BE CONFIRMED BY THE FOUNDATION ENGINEER. EMBEDMENTS GIVEN HERE ARE FOR GUIDANCE ONLY.



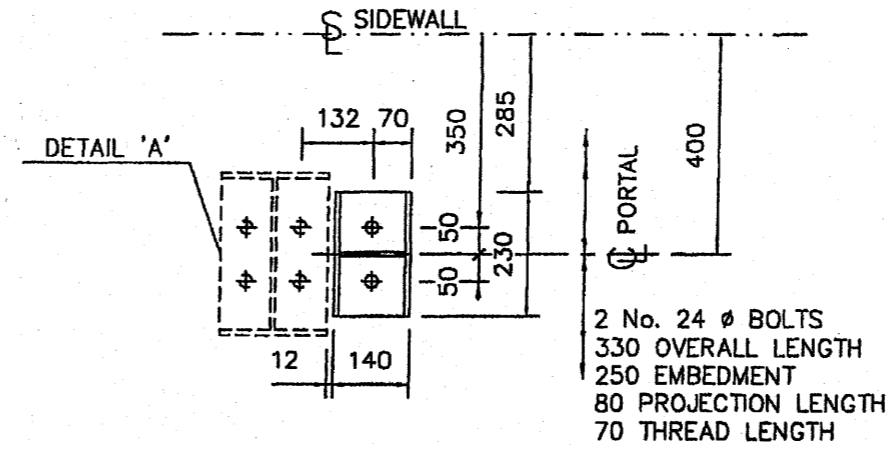
*Detail D*

*Reverse Detail DR*



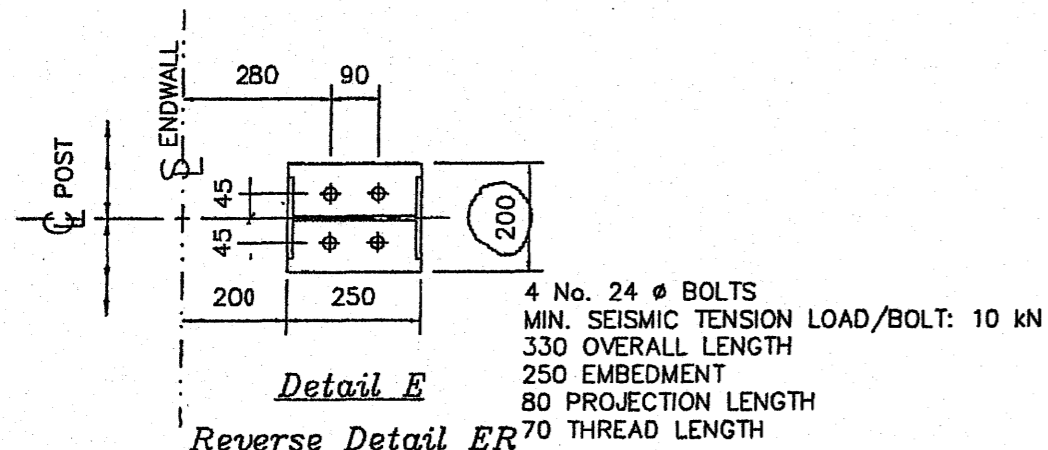
*Detail A*

*Reverse Detail AR*



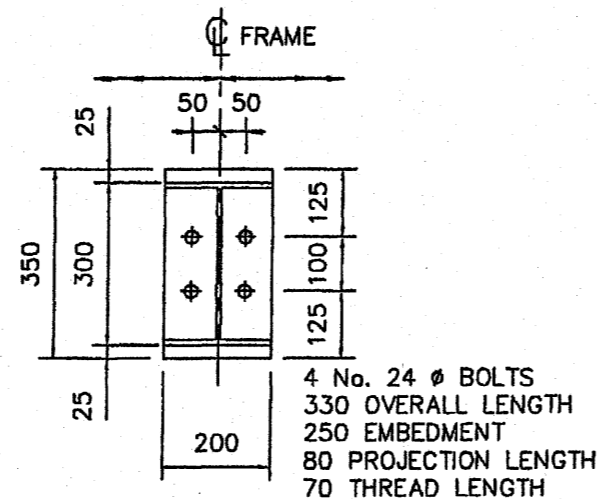
*Detail F*

*Reverse Detail FR*



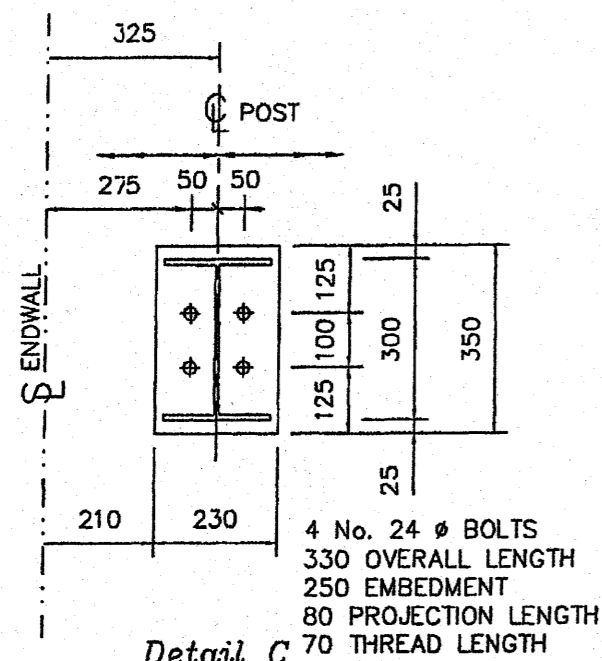
*Detail E*

*Reverse Detail ER*



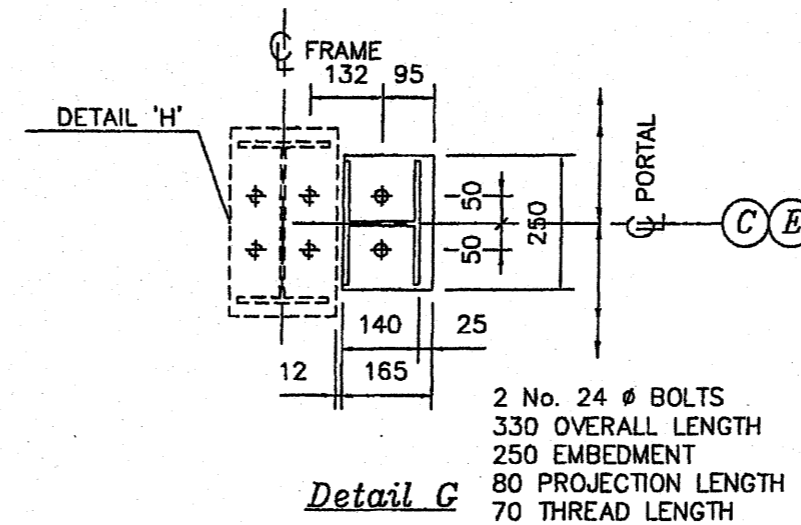
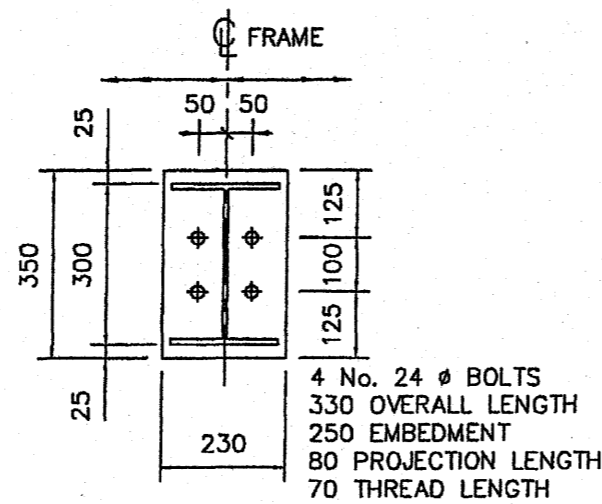
*Detail H*

*Detail B*



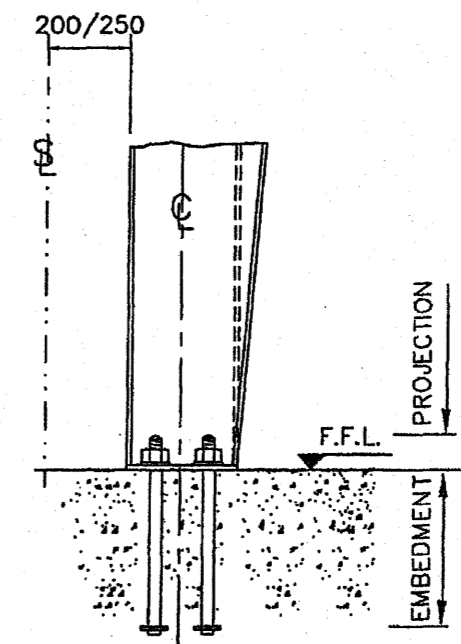
*Detail C*

*Reverse Detail CR*

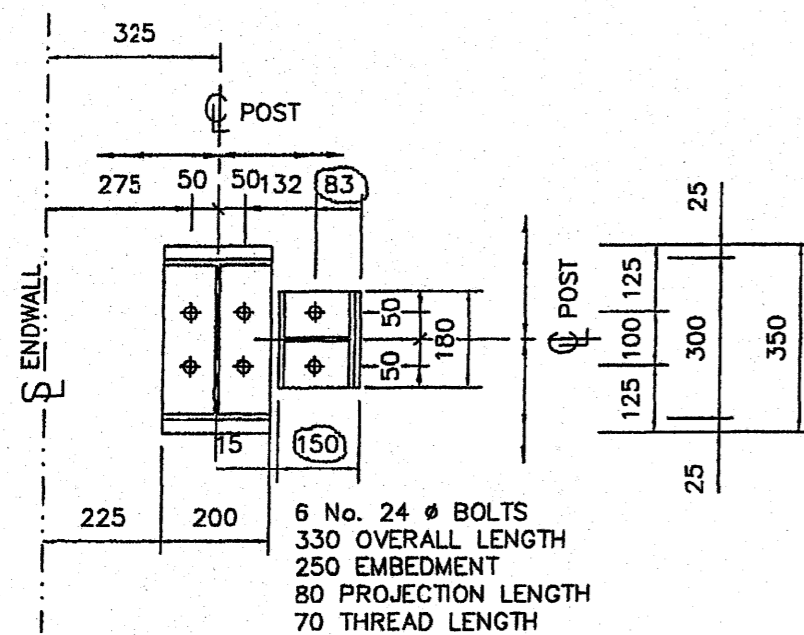


*Detail G*

*Reverse Detail GR*



*Foundation Detail*



*Detail I*

*Reverse Detail IR*

Byggingatulltrúi Hafnarfjardar  
Aigreit þann  
10 MAY 2006  
VPS

**VEKTOR**  
Hönnun og ráðgjöf ehf.  
Kt. 7008962429

**Lindab Butler**  
Building Systems

PROJECT TITLE  
**STEINHELLA - 5**  
**HAFNARFJORDUR**

DRAWING TITLE  
**ANCHOR BOLT DETAILS**

SCALE	DATE	DRAWN BY
Not to Scale	04/04/05	A.N.
DRAWING. No.		REV.
DS-2961/002		A

A	27/04/05	DIMENSIONS CHANGED	L.H.
REV.	DATE	DESCRIPTION	REV. BY

HUNGARY, NYIREGYHÁZA 4400  
DERKOVITS UT 119  
TEL: +3642501310  
FAX: +3642312029

RYNIR ehf.