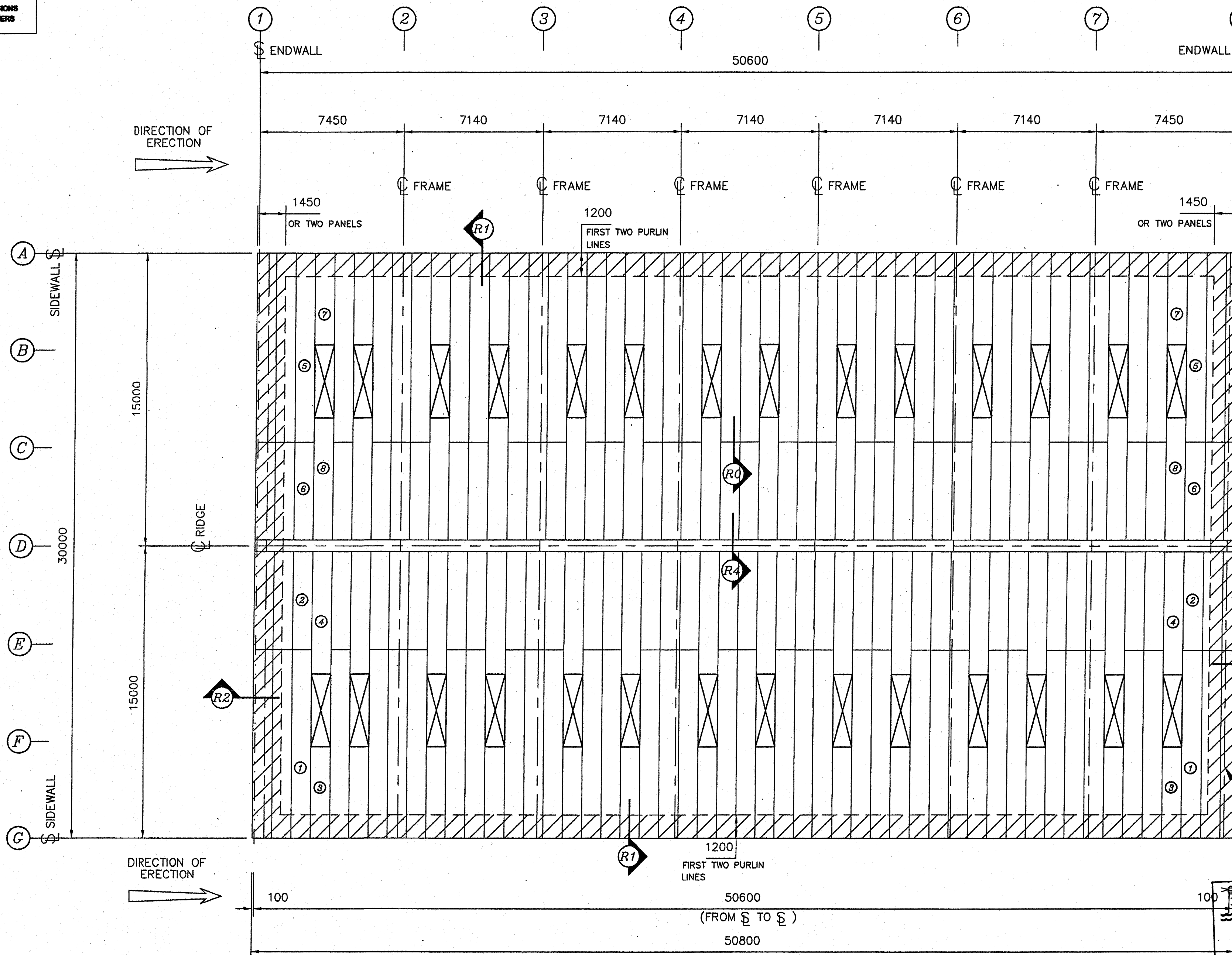


NOTES

- 1) DO NOT SCALE
IF IN DOUBT - ASK.
- 2) ALL DIMENSIONS
IN MILLIMETERS

REV.	DATE	DESCRIPTION	REV. BY
A	20/04/05	ROOF LIGHTS MOVED ONE PURLIN SPACE UP FROM EAVE	KS
B	21/04/05	ROOF LIGHT POSITIONS CHANGED	KS



FIXING PROCEDURE

100mm THK. KS1000 RW ROOF PANELS

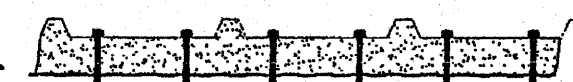
- ① USE 6No. PANEL TO STRUCTURAL FASTENERS (444126) AT RIDGE & SPLICE PURLINS



- ② USE 3No. PANEL TO STRUCTURAL FASTENERS (444126) AT INTERMEDIATE PURLINS.



- ③ USE 6No. PANEL TO STRUCTURAL FASTENERS (444126) AT ALL PURLIN LOCATIONS IN THIS ZONE:



- ④ USE SDS (444110) AT 500mm CRS ALONG EVERY SIDELAP JOINT



HIGH LOCAL SUCTION ZONE

Byggingafultrúi Hafnarfjardar
Afgreitt þann
10 MAY 2006
VPS.

VEKTOR
Hönnun og ráðgjöf ehf.
tlf. 707895-2429

ROOF LIGHT PANELS

PART Nos.: 496244 & 496245

QUANTITY: 28No.
SIZE: 1m x 3.75m

SEE DETAIL R5 FOR FIXING OF LIGHT PANELS

KS1000 RW ROOF PANEL LEGEND

- | | |
|--|--|
| ① PART No.: 496240 - 995mm LONG - 37No. | ⑤ PART No.: 496241 - 995mm LONG - 37No. |
| ② PART No.: 496242 - 5418mm LONG - 37No. | ⑥ PART No.: 496243 - 5418mm LONG - 37No. |
| ③ PART No.: 496240 - 4965mm LONG - 14No. | ⑦ PART No.: 496241 - 4965mm LONG - 14No. |
| ④ PART No.: 496242 - 6668mm LONG - 14No. | ⑧ PART No.: 496243 - 6668mm LONG - 14No. |

<p>Lindab Butler Building Systems</p> <p>MITCHELTON INDUSTRIAL ESTATE KIRKCALDY, PIPE, KY11 3ND TEL: 01992 853200 FAX: 01992 853135</p>	<p>PROJECT TITLE</p> <p>STEINHELLA - 5 HAFNARFJORDUR</p> <p>RYNIR ehf.</p>	<p>DRAWING TITLE</p> <p>KS1000 RW ROOF PANEL LAYOUT</p>	<p>SCALE</p> <p>Not to Scale</p>	<p>DATE</p> <p>18/04/05</p>	<p>DRAWN BY</p> <p>K.S.</p>
	<p>DRAWING No.</p> <p>DS-29610010</p>		<p>REV.</p> <p>B</p>		