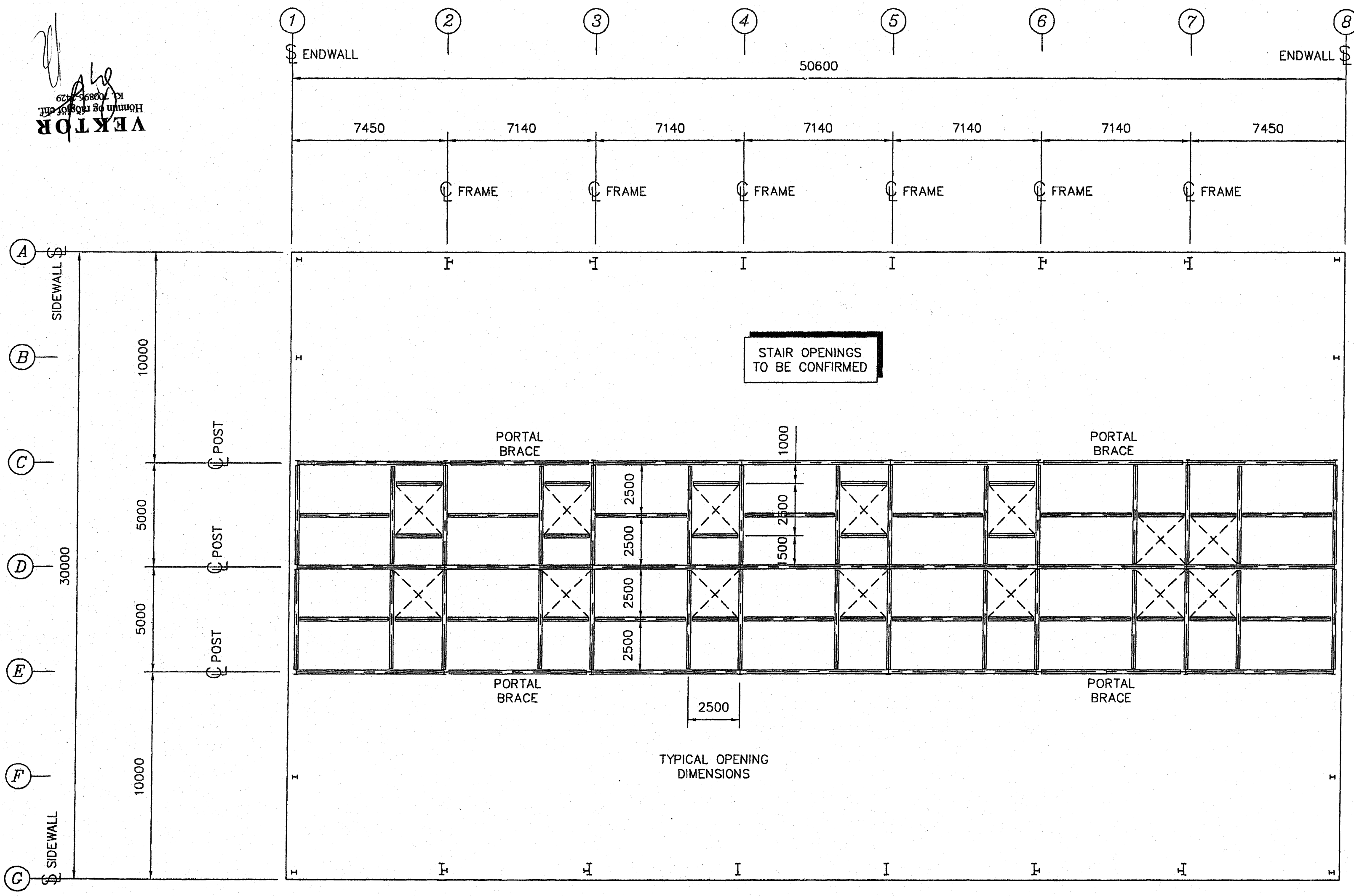


NOTES

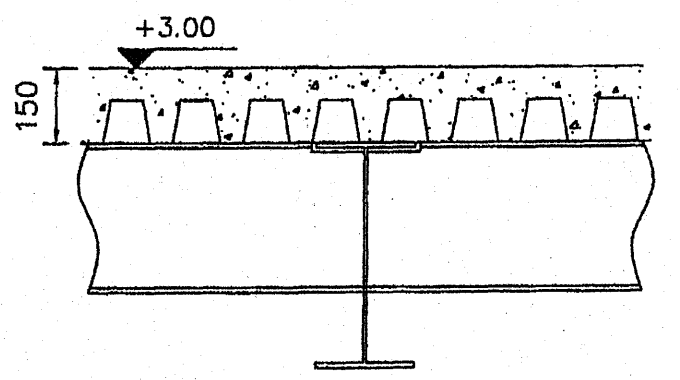
- 1) DO NOT SCALE
IF IN DOUBT - ASK.
- 2) ALL DIMENSIONS
IN MILLIMETERS

REV.	DATE	DESCRIPTION	REV BY
A	06/04/05	GENERAL REVISION	A.N.

VEKTOR
 Hönnun og Töskun
 Kfl. 70886-4399



FLOOR LOADINGS:
 DEAD LOAD: 5.5 kN/m²
 (inc. 0.5 kN/m² lightweight partition walls)
 LIVE LOAD: 3.0 kN/m²



Important:
 Design of the mezzanine support beams assumes full resistant to their top flanges from the floor construction. The Builder MUST ensure that this is achieved by fixing the floor construction to the top flange at minimum 450mm centres.

Byggingaútrúi Hafnarfjarðar
 Algrett þann
 10 MAY 2006
 VPS.

Lindab Butler
 Building Systems
 MITCHELSTON INDUSTRIAL ESTATE
 KIRKCALDY, FIFE, KY11 3NB
 TEL: 01592 652300
 FAX: 01592 653135

PROJECT TITLE
STEINHELLA - 5
HAFNARFJORDUR
 RYNIR ehf.

DRAWING TITLE
FLOOR LAYOUT

SCALE	DATE	DRAWN BY	REV.
Not to Scale	2/3/05	P.R. ENG. BY	
DRAWING No.		REV.	
DS-2961/008		A	