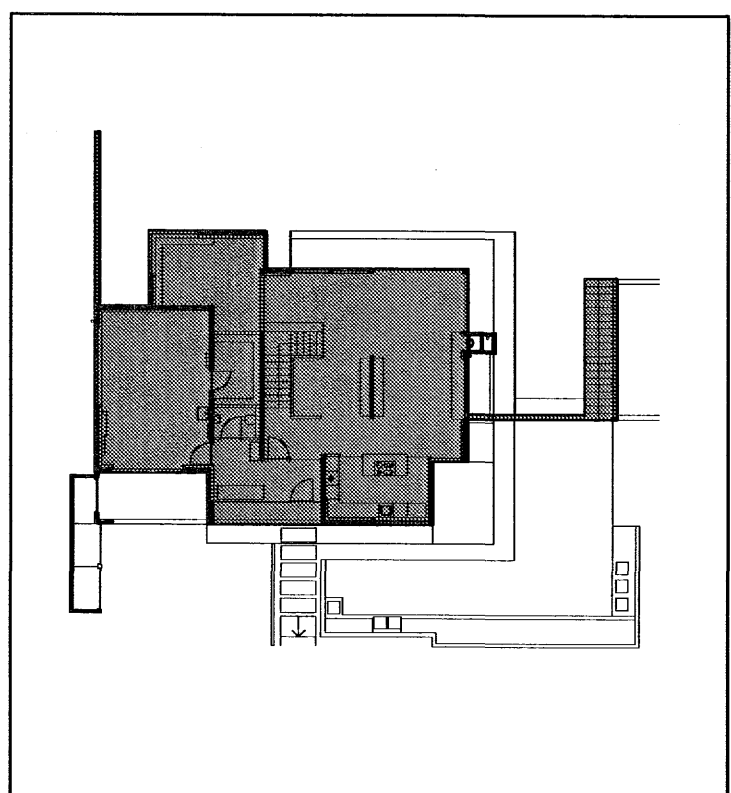


VEGGUR	HÆÐ	ÞYKKT	EINFÖLD / TVÖFÖLD JÁRNAGR.	GRUNNBENDING LÁRETT	GRUNNBENDING LÓÐRETT
V-1	2	180	Tvöföld grind	K10c/c120	K10c/c150
V-1	1	180	Tvöföld grind	K10c/c120	K10c/c150
V-1	U	200	Tvöföld grind	K10c/c250	K10c/c150
V-2a	2	180	Tvöföld grind	K10c/c120	K10c/c250
V-2a	1	180	Tvöföld grind	K10c/c120	K10c/c250
V-2a	U	200	Tvöföld grind	K10c/c250	K10c/c250
V-2b	2	160	Tvöföld grind	K10c/c250	K10c/c250
V-2b	1	160	Tvöföld grind	K10c/c250	K10c/c250
V-2b	U	200	Tvöföld grind	K10c/c250	K10c/c250
V-3	2	180	Tvöföld grind	K10c/c120	K12c/c100
V-3	1	180	Tvöföld grind	K10c/c120	K12c/c100
V-3	U	200	Tvöföld grind	K10c/c250	K12c/c100
V-4	2	180	Tvöföld grind	K10c/c120	K10c/c250
V-4	1	200	Tvöföld grind	K10c/c120	K10c/c250
V-4	U	200	Tvöföld grind	K10c/c250	K10c/c250
V-5	2	180	Tvöföld grind	K10c/c120	K10c/c250
V-5	1	200	Tvöföld grind	K10c/c120	K10c/c250
V-5	U	200	Tvöföld grind	K10c/c250	K10c/c250
V-6	2	180	Tvöföld grind	K10c/c120	K10c/c250
V-6	1	180	Tvöföld grind	K10c/c120	K10c/c250
V-6	U	200	Tvöföld grind	K10c/c250	K10c/c250
V-7	2	180	Tvöföld grind	K10c/c120	K10c/c150
V-7	1	200	Tvöföld grind	K10c/c120	K10c/c150
V-7	U	200	Tvöföld grind	K10c/c250	K10c/c150
V-8a	2	BR	Tvöföld grind	K10c/c120	K10c/c250
V-8a	1	200	Tvöföld grind	K10c/c120	K10c/c250
V-8a	U	200	Tvöföld grind	K10c/c250	K10c/c250
V-8b	2	180	Tvöföld grind	K10c/c120	K10c/c150
V-8b	1	200	Tvöföld grind	K10c/c120	K10c/c250
V-8b	U	200	Tvöföld grind	K10c/c250	K10c/c250
V-9	2	180	Tvöföld grind	K10c/c120	K10c/c250
V-9	1	200	Tvöföld grind	K10c/c120	K10c/c250
V-9	U	200	Tvöföld grind	K10c/c250	K10c/c250
V-10	2	180	Tvöföld grind	K10c/c120	K10c/c250
V-10	1	200	Tvöföld grind	K10c/c120	K10c/c250
V-10	U	200	Tvöföld grind	K10c/c250	K10c/c250
V-11	2	180	Tvöföld grind	K10c/c120	K10c/c150
V-11	1	180	Tvöföld grind	K10c/c120	K10c/c150
V-11	U	200	Tvöföld grind	K10c/c250	K10c/c150
V-12	2	180	Tvöföld grind	K10c/c120	K10c/c150
V-12	1	180	Tvöföld grind	K10c/c120	K10c/c150
V-12	U	200	Tvöföld grind	K10c/c250	K10c/c150
V-13	2	180	Tvöföld grind	K10c/c250	K10c/c250
V-13	1	180	Tvöföld grind	K10c/c250	K10c/c250
V-13	U	200	Tvöföld grind	K10c/c250	K10c/c250
V-14	2	150	Tvöföld grind	K10c/c250	K10c/c250
V-14	1	150	Tvöföld grind	K10c/c250	K10c/c250
V-14	U	200	Tvöföld grind	K10c/c250	K10c/c250
V-15	2	180	Tvöföld grind	K10c/c120	K10c/c250
V-15	1	180	Tvöföld grind	K10c/c250	K10c/c250
V-15	U	200	Tvöföld grind	K10c/c250	K10c/c250
V-16	2	150	Tvöföld grind	K10c/c120	K10c/c250
V-16	1	150	Tvöföld grind	K10c/c120	K10c/c250
V-16	U	200	Tvöföld grind	K10c/c250	K10c/c250

ÁRTUN SAMRÆMINGARÖNNUNAR 30 071070-5069

Sambýkka þann  
14 MAJ 2007  
Byggingaáætlunin í Hafnarfirði  
Eh. Sigurbjartur Halldórsson

BR. DAGS. BREYTING REKN. TEKN.



**VSÓ RÁÐGJÖF**

BRUNNARSTÍG 20, 102 REYKJAVÍK, Sími 585-9000, Símbreyf 585-9010, Netfang vs@vs.is

HLÍÐARÁS 4 - HAFNARFIRÐI

BURDARVIRKI  
BENDING VEGGJA

HANNAÐ/TEKN. SR / ALB  
YFIRFARIR  
SAMBYKKT  
KT. 2007/05189

KVARNR. VERKNR. TEKN. NR. REYKJAVÍK 14.12.2008 BR.

06306 B-A-2