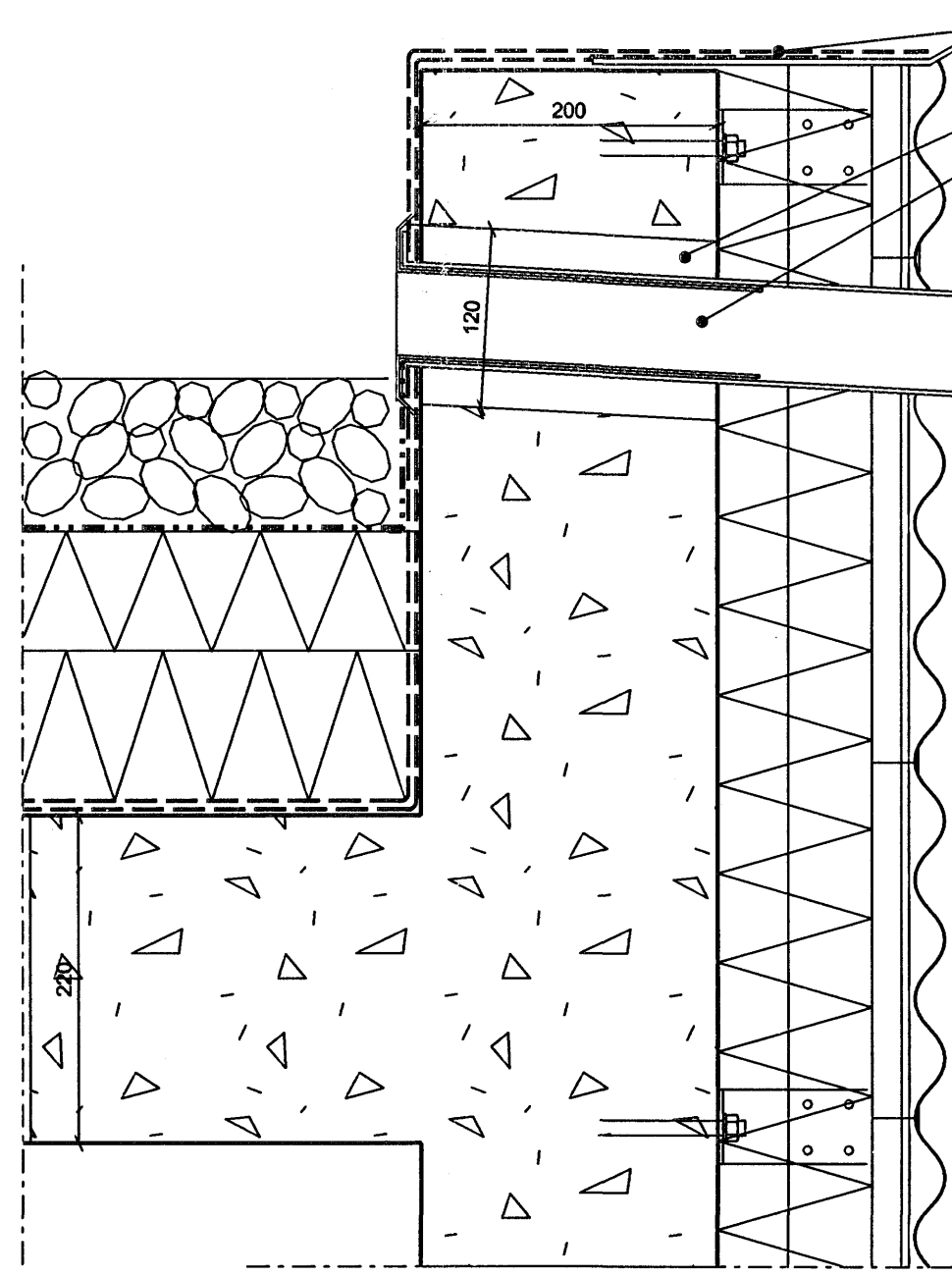
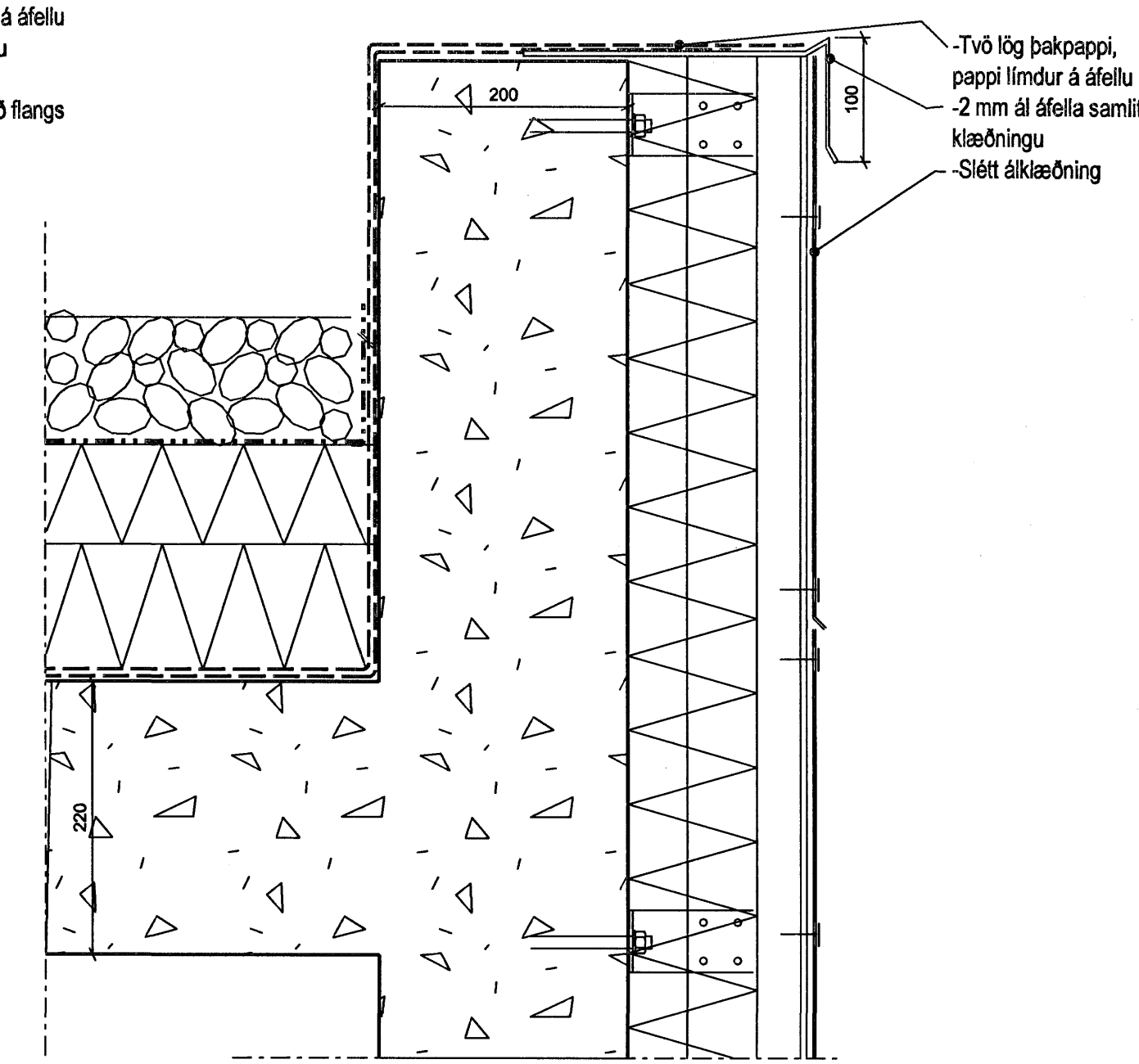


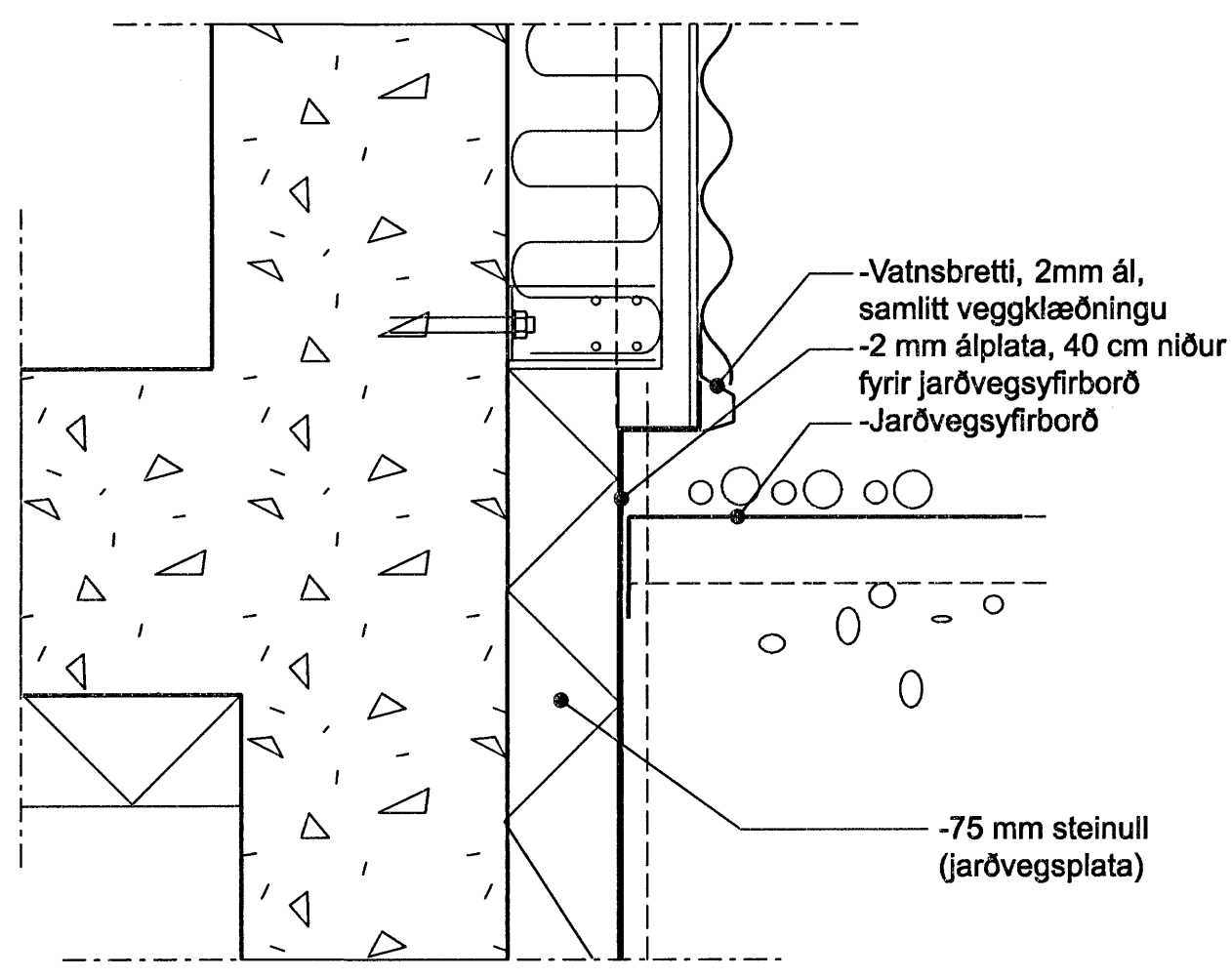
1 DEILI 1:5  
Þakfrágangur niðurfall



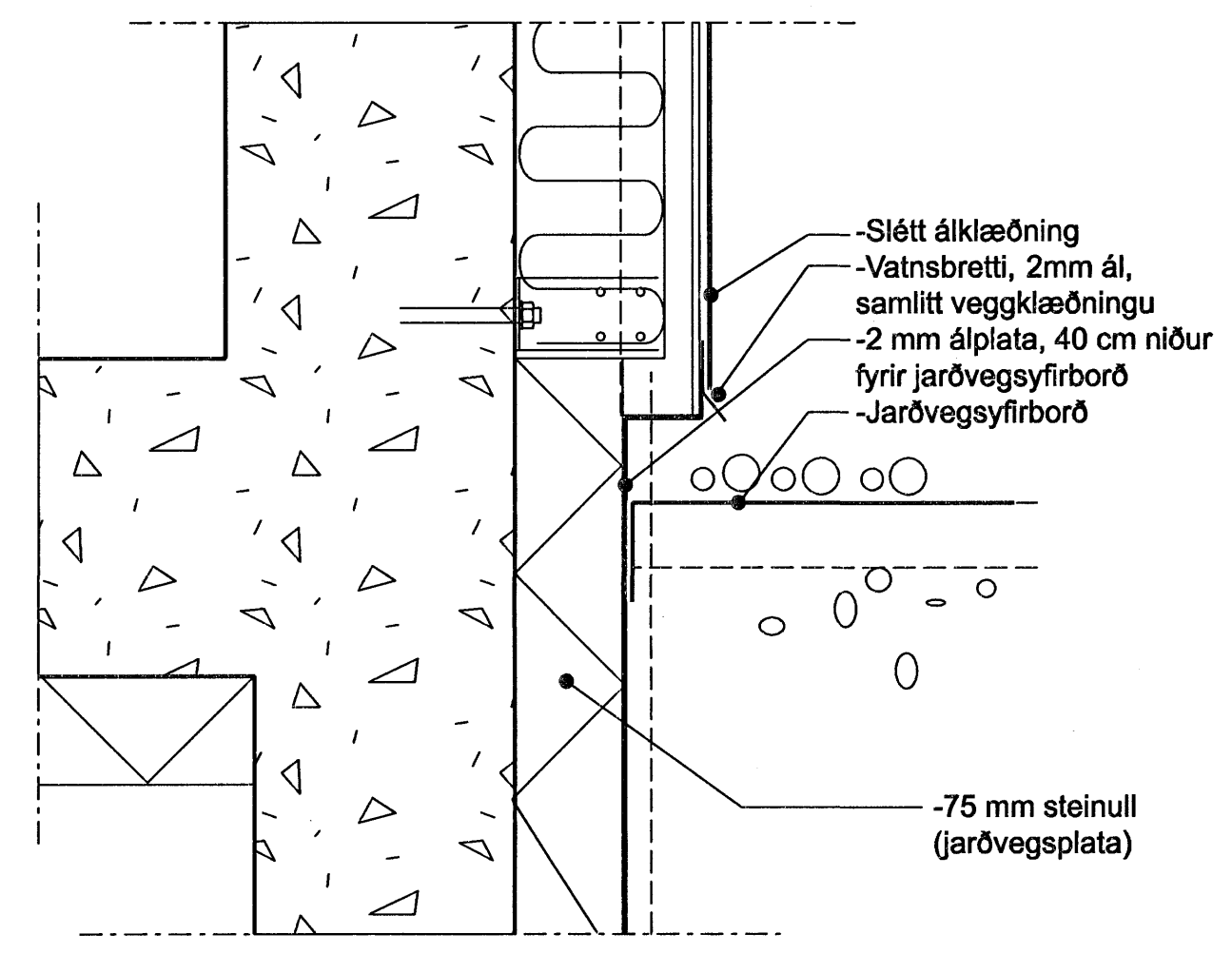
2 DEILI 1:5  
Þakfrágangur yfirfall, báruklæðning



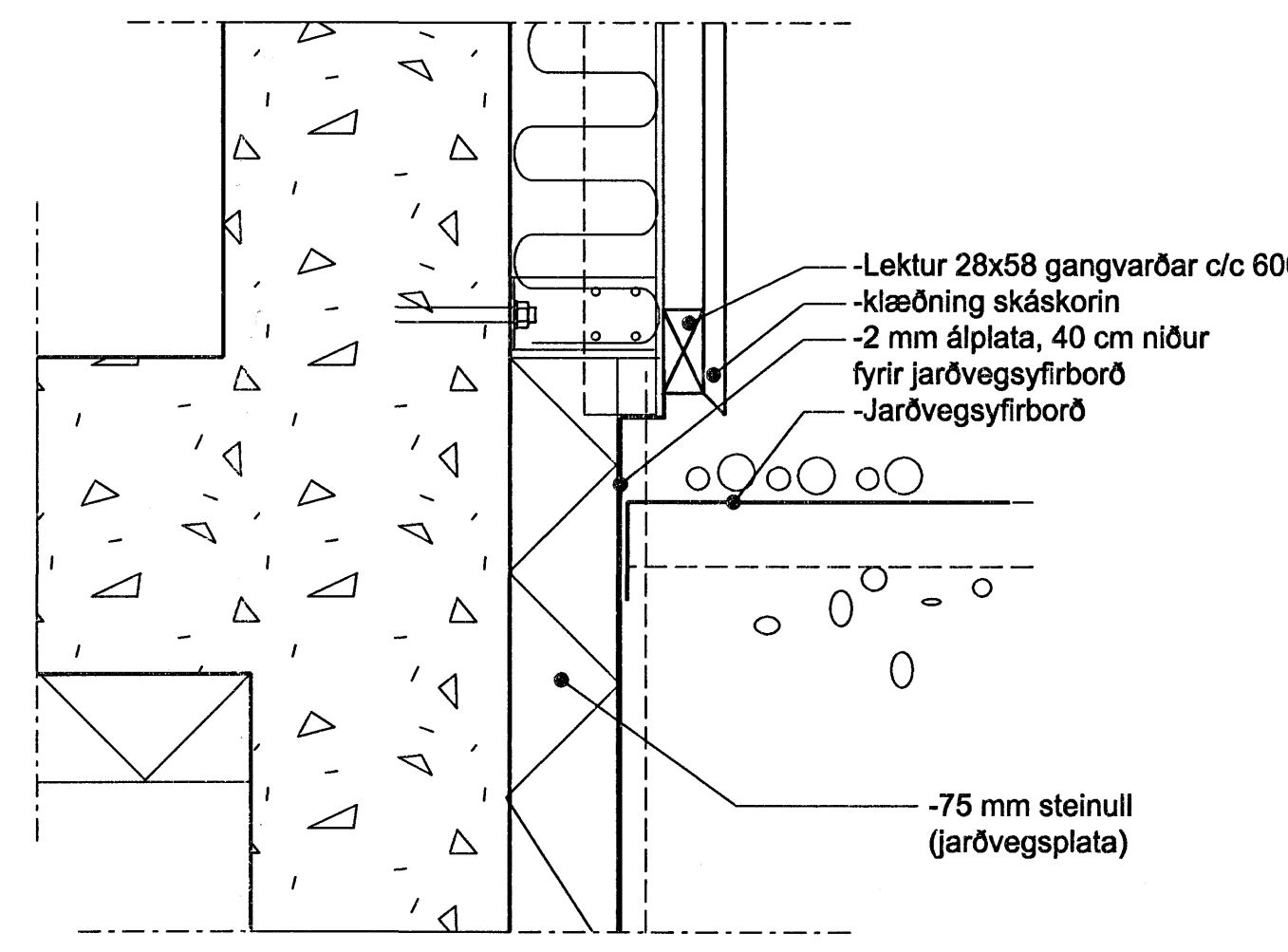
3 DEILI 1:5  
Þakfrágangur, almennt, slétt klæðning



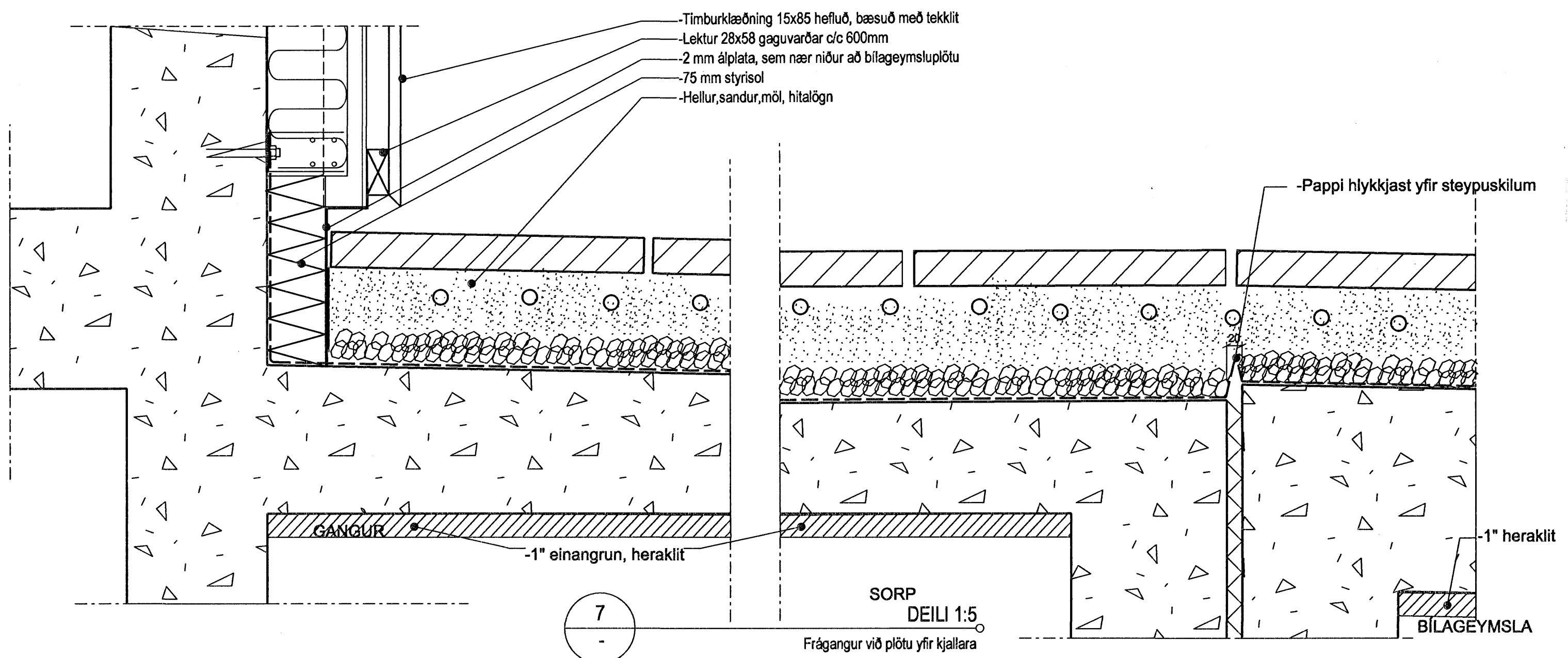
4 DEILI 1:5  
Frágangur við sökkul, báruklæðning



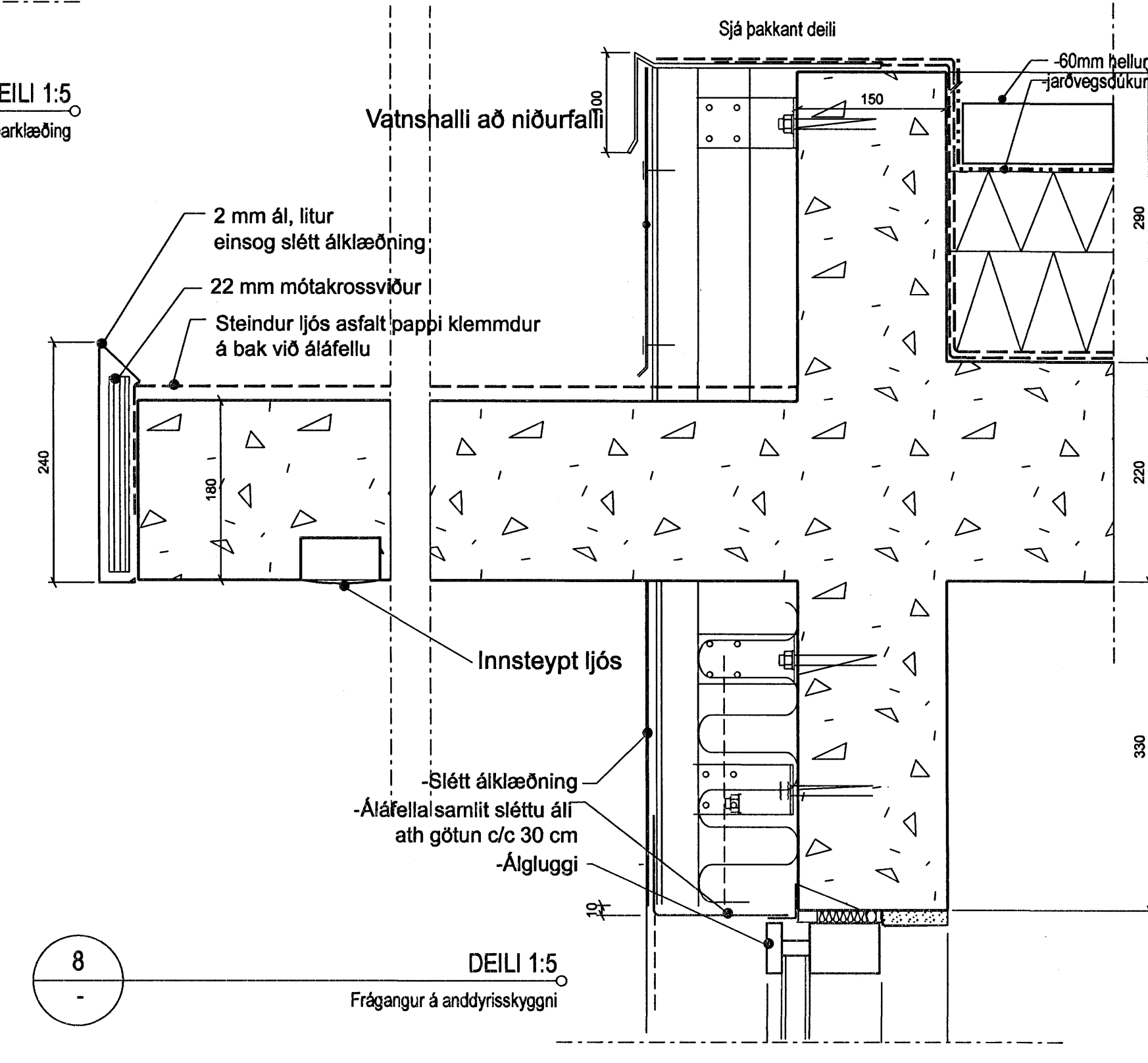
5 DEILI 1:5  
Frágangur við sökkul, slétt álklaðning



6 DEILI 1:5  
Frágangur við sökkul, lóðrétt viðarklaðning



7 DEILI 1:5  
Frágangur við plötu yfir kjallara



Samþykkt þann  
 26 JAN. 2007  
 Byggingafulltrúinn í Hafnarfirði  
 F.h. Sigurbjartur Halldórsson

|  |                  |          |      |
|--|------------------|----------|------|
| ÚTGAFA   | TEIKNAD          | SAMÞYKKT | LAGD |
| BREYTINGAR   |                  |          |      |
| ASK Arkitektar<br>Geislagötu 9<br>101 Reykjavík<br>Sími 515 0300<br>Fax 515 0319<br>www.ask.is |                  |          |      |
| Artun aðalhönnuð af<br>ARKITEKTAR  |                  |          |      |
| Páll Guðnaugsson arkitekt FAX/L. 210552-2199   |                  |          |      |
| <b>SKIPALÖN 23</b><br><b>VERKTEIKNINGAR</b><br>VERRSNI<br>DEILI, klæðningar lóðrétt.           |                  |          |      |
| VERK NR.   | NUMER TEIKNINGAR | ÚTGAFA   |      |
| 0688   | 41-01            |          |      |
| MOV. I A1  | 1:5              |          |      |
| TEIKNAD  | SS               |          |      |
| DAÐ  | 15.12.2006       |          |      |