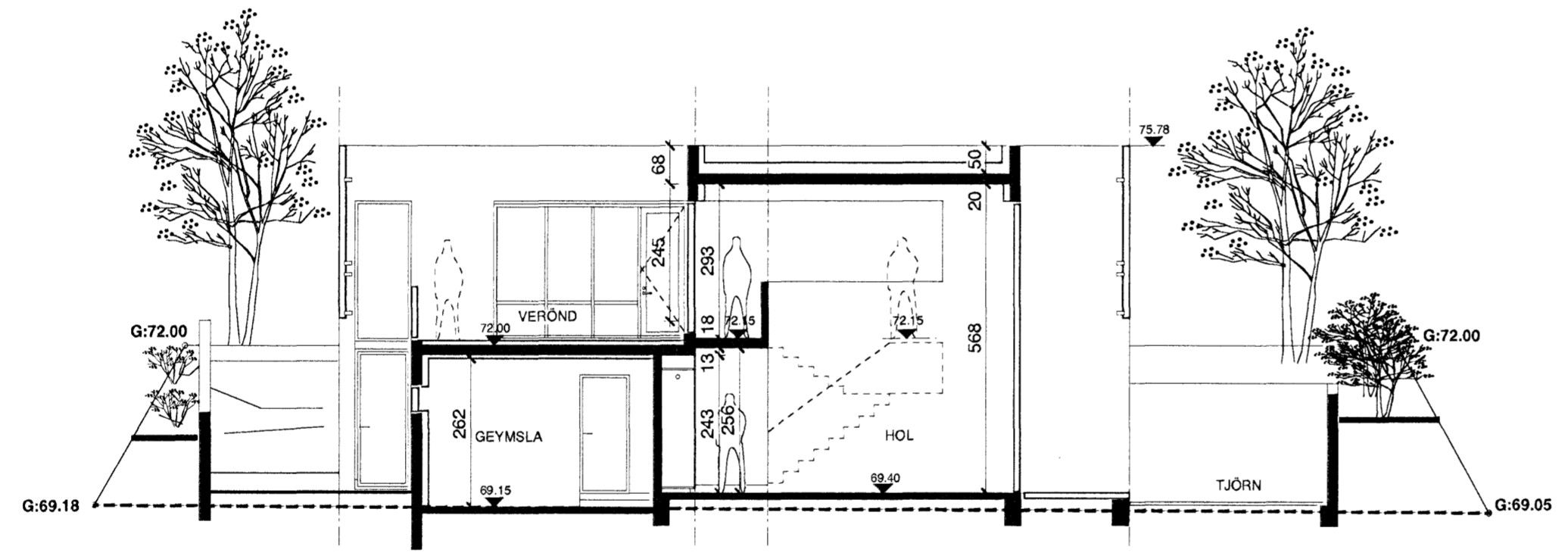


SNID A

30.5.2006	svalir suð-aust, veggur á lóðamörkum vestur	E
8.4.2003	þakluggar, hæðarkóðar, gluggasetning, samræming.	D
12.5.2002	hús minnkað/málsetning	C
		B
		A

breyting

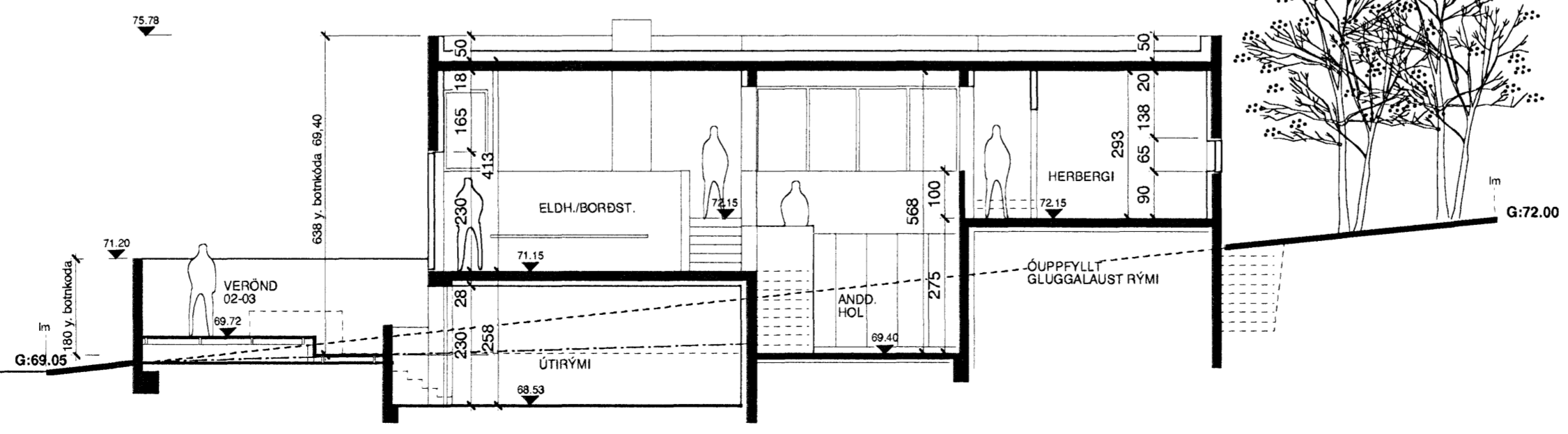


SNID B

ERLUÁS 27

ADALUPPDRA'TTUR
SNEIÐMYNDIR
teikning
2020 verkúmer
1:100 mív
16.04.02 dags

ERLUÁS



SNID C

Handwritten signatures and initials: Wld, BF, SBH, and others.

ok - hönnun
ARKITEKTAR
INGOLFSTRÆTI 1A
REYKJAVÍK 101
5518050 SÍMI
5518077 FAX
palmark@simnet.is
pálmar kristmundsson arkitekt
0804555269

27-500 teikning nr.
C útgáfa