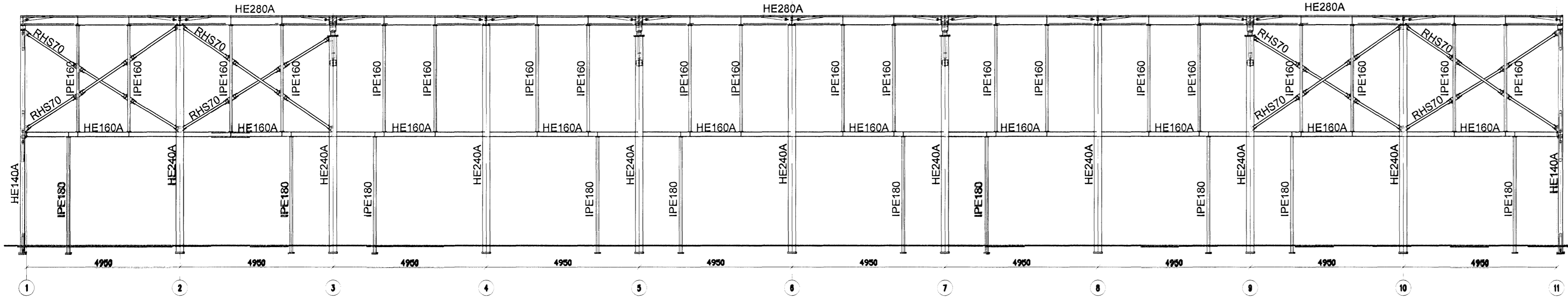
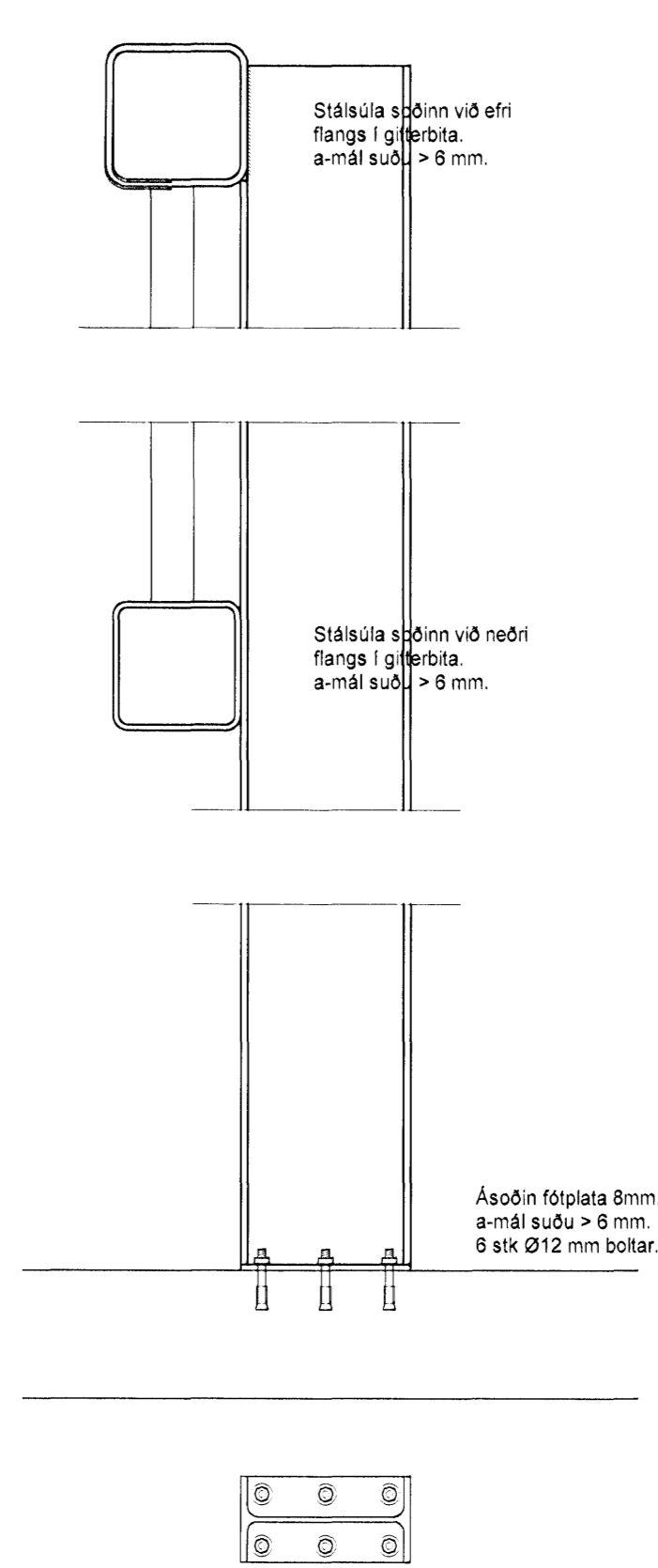


Vestur 1:100

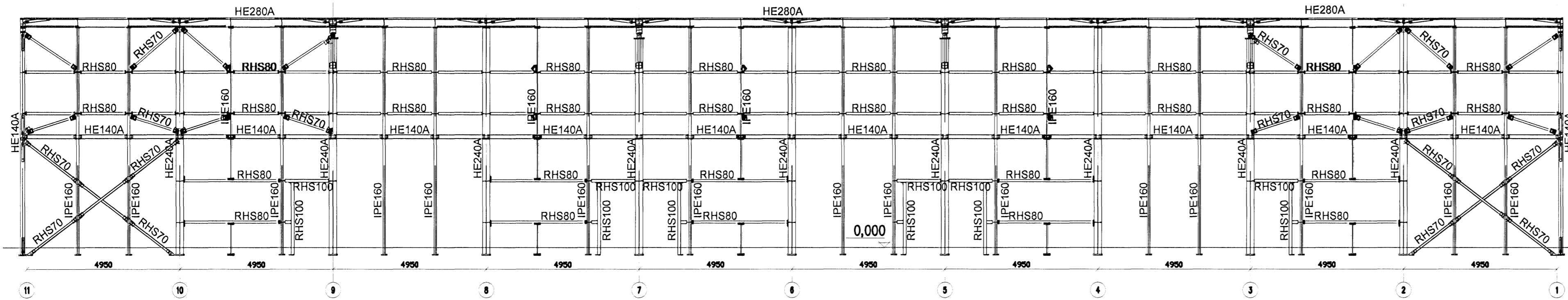


Sérmynd 1.1. 1:10.

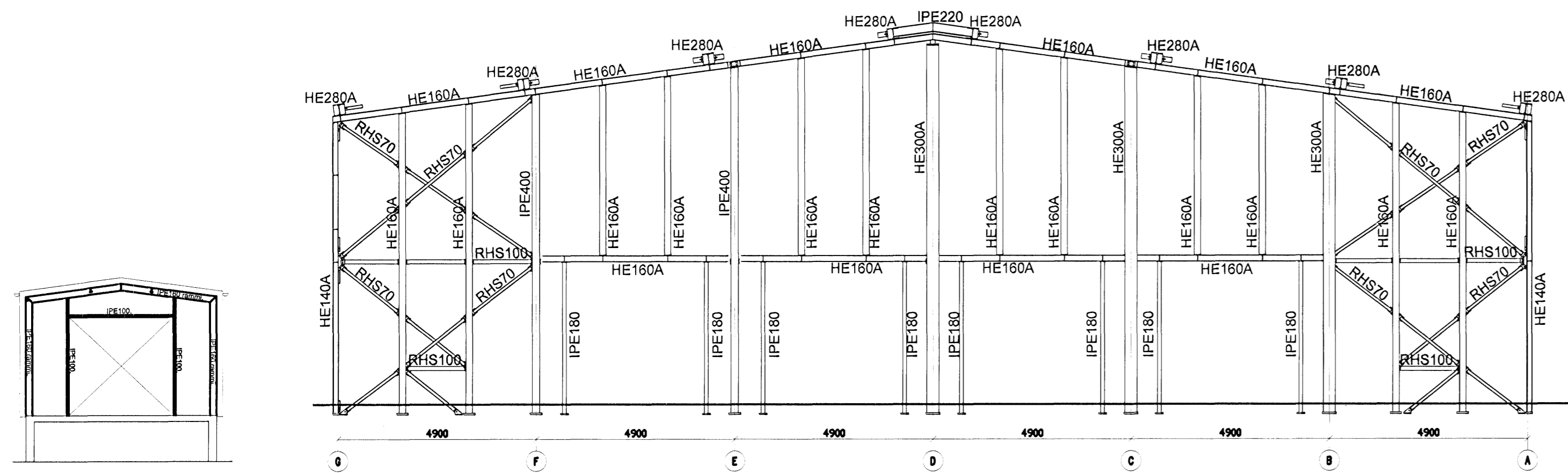


Sampykkt þann  
05 JUNI 2008  
Byggingarútlitunin í Hafnarfirði  
F.h. Hrólfur S. Gunnlaugsson

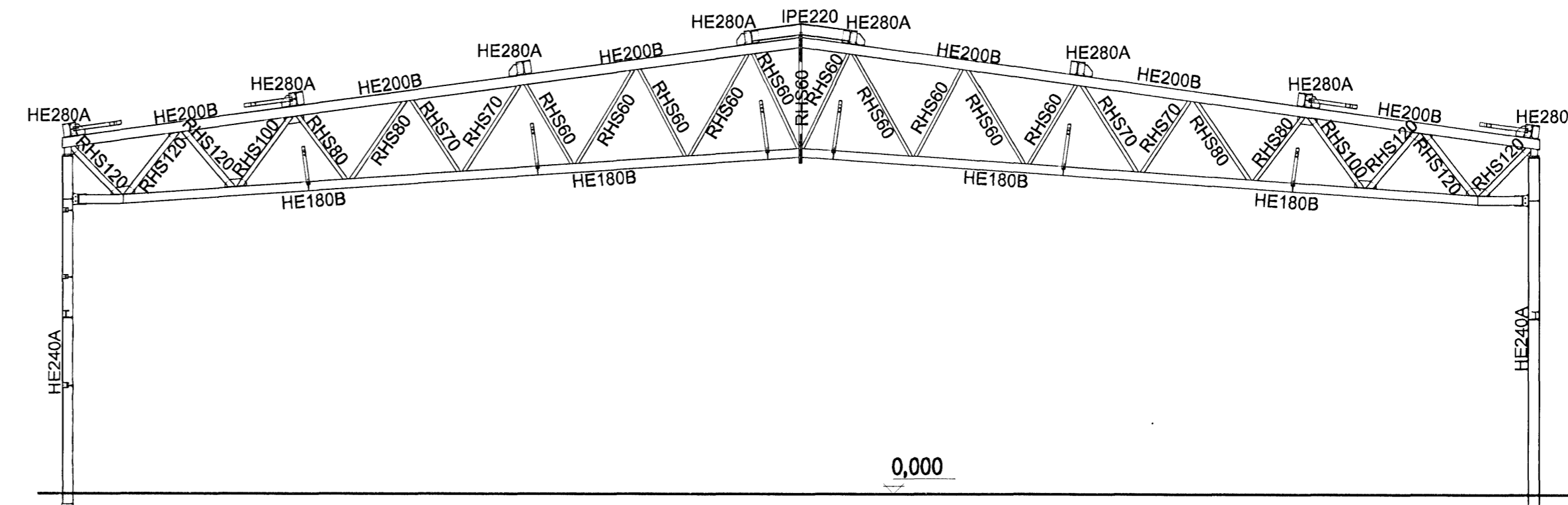
Austur 1:100



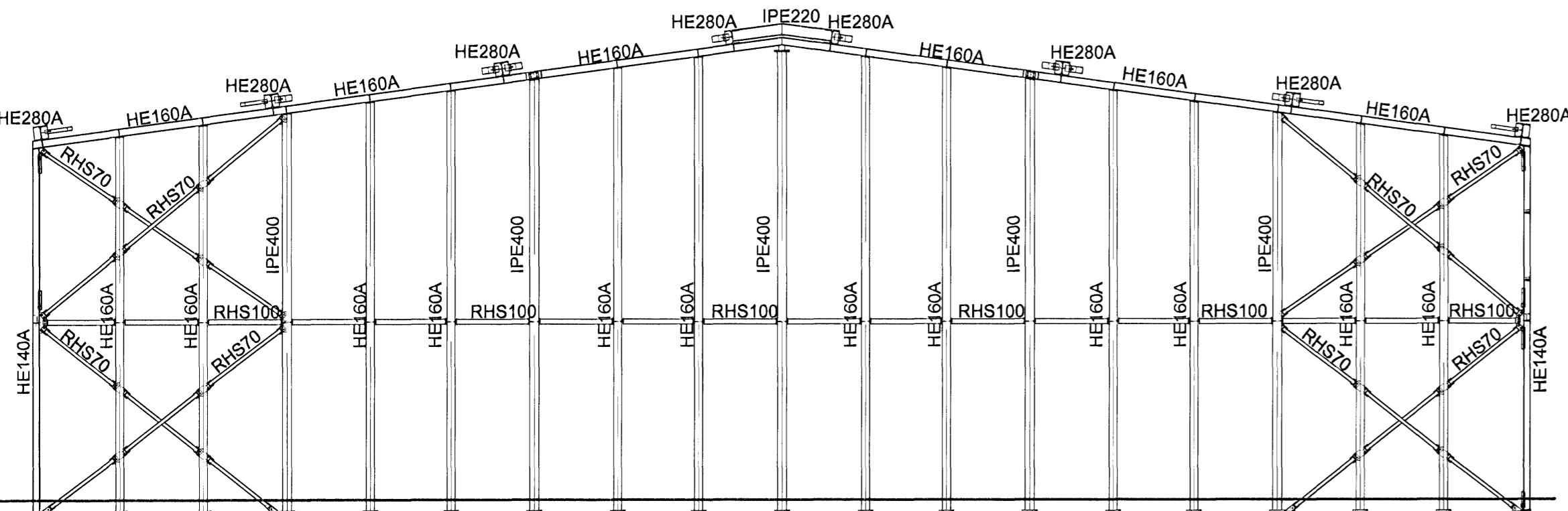
Norður 1:100



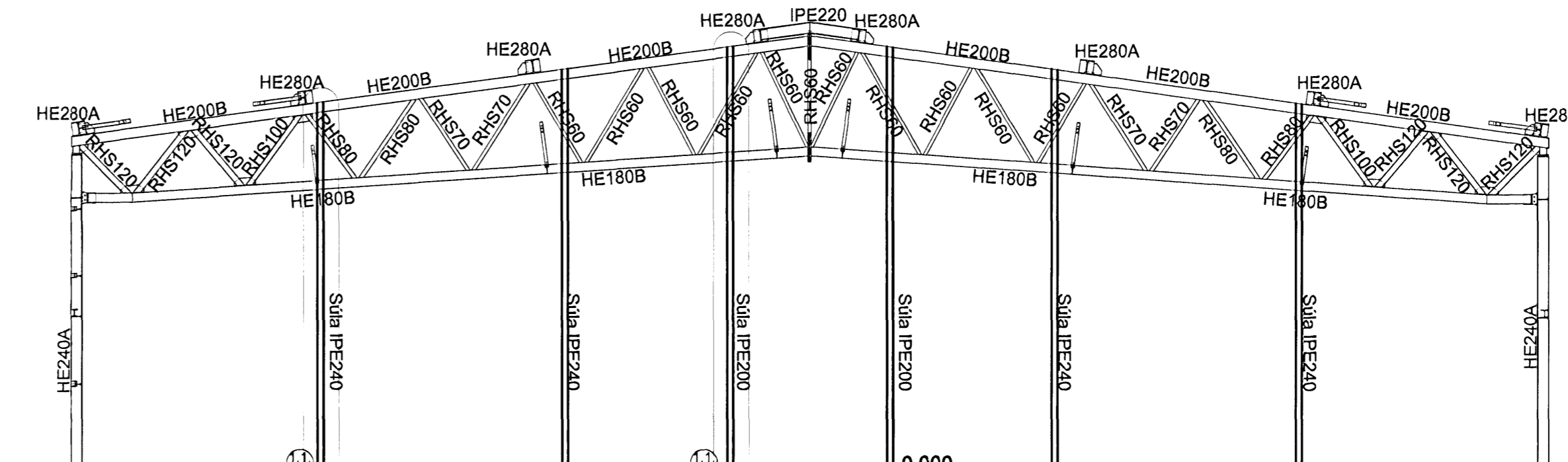
Snið A-A 1:100



Suður 1:100



Snið B-B 1:100



Breytingar:

A: 12.1.2008. GV (Lyftarahús)
B: 2.5.2008. GV (Skástífur í norðurgaffli)
C: 22.5.2008. GV (Snið B og sérmynd 1.1.)

**TÓV**  
TEIKNISTOFAN ÓDINSTORGI  
VERKFRÆÐISTOFA ehf.  
Óðingsgötu 7  
101 Reykjavík  
Netfang: tov@to.is  
Sími: 510 2211 Fax: 510 2201

Verkefni: Áithella 17, Hafnarfirði.  
Eiðli: Burðarþol: Hliðarmyndir og snið í stálgrind.

Hönnun: VÍFILL ODDSSON kl. 101237-3829 VERKFRÆÐINGUR FVFI - FRV  
GÚSTAF VÍFILLSSON kl. 231103-0069 VERKFRÆÐINGUR FVFI

Antun aðalhöggvaðar  
Árður Pálsson 2008.05.20 4429  
M. 1.5020.  
R. G.V.