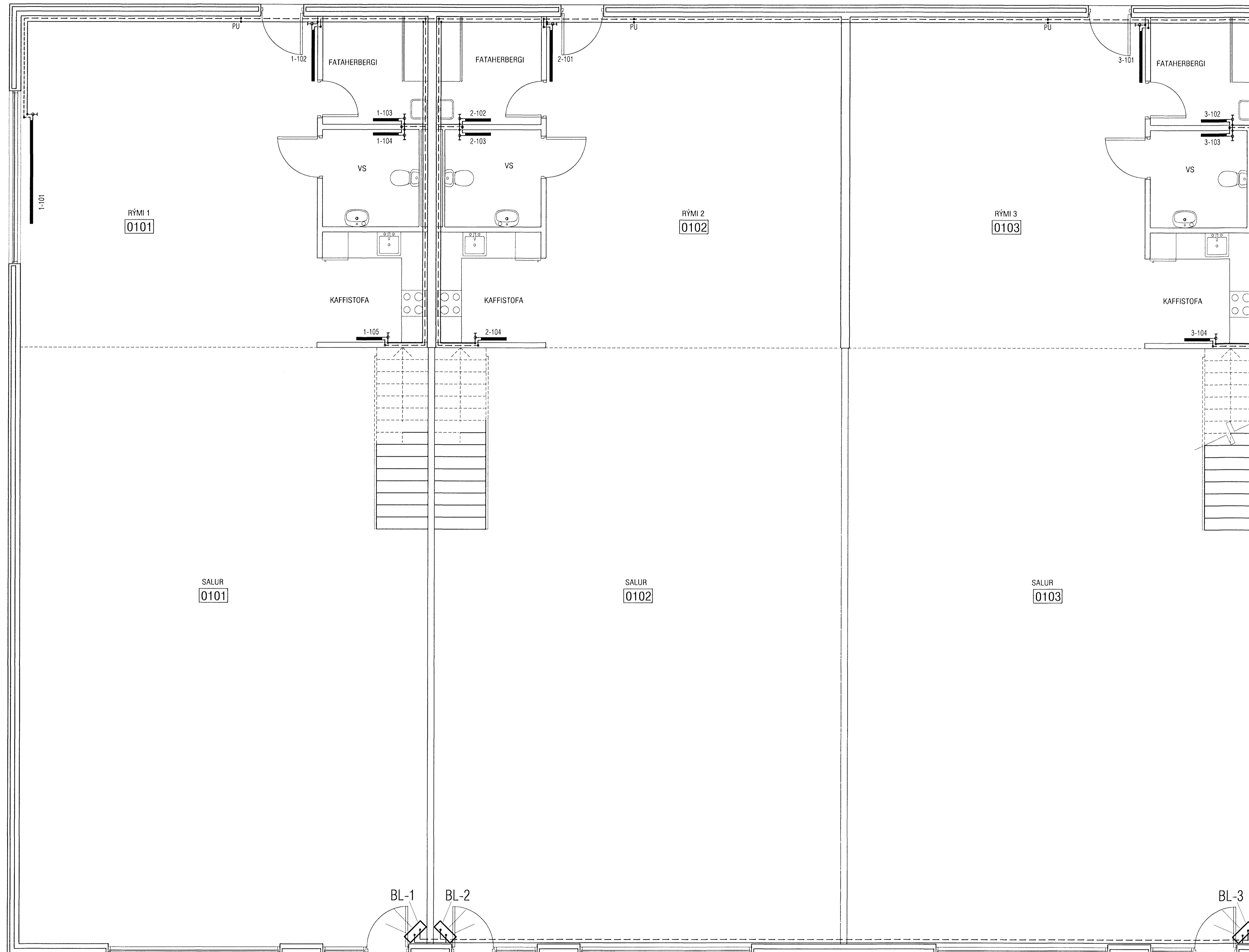
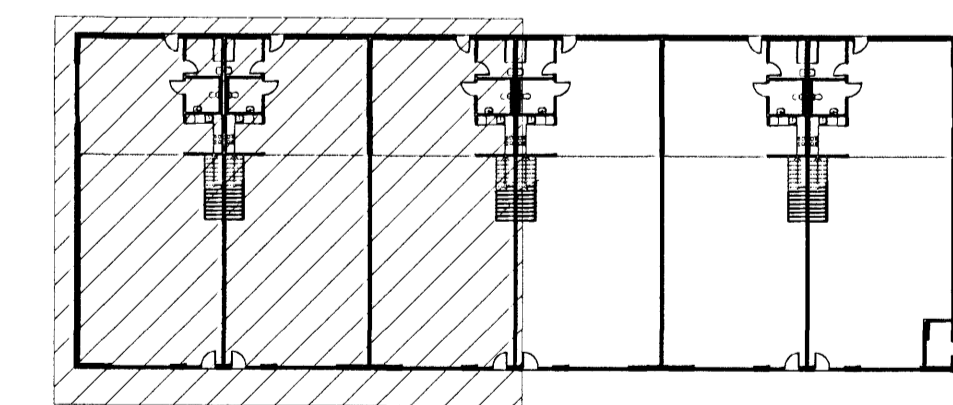


Byggingafræðingur
Alfreitur Þann
- 6. AUG 2008
Björgvin



ÖFNATAFLA ΔT= 40° C

RÝMINN: I og I.hæð	Nr.Oms	Útreiknað varmhæð [W]	Mesta ofnhæð	Mesta oflengd	Valinn ofn Alköst [W]	Lokar	Athugasemd
0101-Salur	BL-1	14 215 W			15 000 W		Blasari
0101-Rými	1-101	4 446 W	H300C	B2400	1 927 W	Túr	
	1-102		H600B	B1200	1 240 W	Túr	
0101-Fataherbergi	1-103	427 W	H600A	B600	440 W	Retúr	
0101-Vs	1-104	288 W	H600A	B600	440 W	Retúr	
0101-Kaffistofa	1-105	219 W	H600A	B600	440 W	Túr	
0101-Milliloft	1-106	5 173 W	H300C	B2400	1 927 W	Túr	
	1-107		H300C	B2400	1 927 W	Túr	
0102-Salur	BL-2	13 677 W			15 000 W		Blasari
0102-Rými	2-101	2 565 W	H600B	B1200	1 240 W	Túr	
0102-Fataherbergi	2-102	408 W	H600A	B600	440 W	Retúr	
0102-Vs	2-103	280 W	H600A	B600	440 W	Retúr	
0102-Kaffistofa	2-104	213 W	H600A	B600	440 W	Túr	
0102-Milliloft	2-105	3 765 W	H300C	B2400	1 927 W	Túr	
	2-106		H300C	B2400	1 927 W	Túr	
0103-Salur	BL-3	13 677 W			15 000 W		Blasari
0103-Rými	3-101	2 565 W	H600B	B1200	1 240 W	Túr	
0103-Fataherbergi	3-102	408 W	H600A	B600	440 W	Retúr	
0103-Vs	3-103	280 W	H600A	B600	440 W	Retúr	
0103-Kaffistofa	3-104	213 W	H600A	B600	440 W	Túr	
0103-Milliloft	3-105	3 765 W	H300C	B2400	1 927 W	Túr	
	3-106		H300C	B2400	1 927 W	Túr	
0104-Salur	BL-4	13 677 W			15 000 W		Blasari
0104-Rými	4-101	2 636 W	H600B	B1200	1 240 W	Túr	
0104-Fataherbergi	4-102	408 W	H600A	B600	440 W	Retúr	
0104-Vs	4-103	280 W	H600A	B600	440 W	Retúr	
0104-Kaffistofa	4-104	213 W	H600A	B600	440 W	Túr	
0104-Milliloft	4-105	3 765 W	H300C	B2400	1 927 W	Túr	
	4-106		H300C	B2400	1 927 W	Túr	
0105-Salur	BL-5	13 677 W			15 000 W		Blasari
0105-Rými	5-101	2 565 W	H600B	B1200	1 240 W	Túr	
0105-Fataherbergi	5-102	408 W	H600A	B600	440 W	Retúr	
0105-Vs	5-103	280 W	H600A	B600	440 W	Retúr	
0105-Kaffistofa	5-104	213 W	H600A	B600	440 W	Túr	
0105-Milliloft	5-105	3 765 W	H300C	B2400	1 927 W	Túr	
	5-106		H300C	B2400	1 927 W	Túr	
0106-Salur	BL-6	14 700 W			15 000 W		Blasari
0106-Rými	6-101	3 475 W	H600B	B1200	1 240 W	Túr	
0106-Fataherbergi	6-102	401 W	H600A	B600	440 W	Retúr	
0106-Vs	6-103	280 W	H600A	B600	440 W	Retúr	
0106-Kaffistofa	6-104	257 W	H600A	B600	440 W	Túr	
0106-Milliloft	6-105	4 976 W	H300C	B2400	1 927 W	Túr	
	6-106		H300C	B2400	1 927 W	Túr	
0108-Tæknvæmi		697 W					
		133.255 W			Valið alls: 130.411 W		



LYKILMYND 1:500

ATH!
Stærð og nákvæm staðsetning á götum fyrir frárennissli-, neyðsluvalns- og bitalennir skil áður en í samráði við einn og annan.

VEKTOR
- hönnun og ráðgjöf -
Akralind 6, 201 Kópavogi.

Sigurður Halsteinnsson
Byggingafræðingur
Ís. 03093719
Sími: 554-9550 Fax: 554-6668.

Suðurbella 8, Hafnarfjörður
Hítalagnir
Grunnmynd 1.hæð

Telisk. nr. _____
Sampýkt _____

Br. _____
Dags _____

Hinnar _____
Tilskil _____