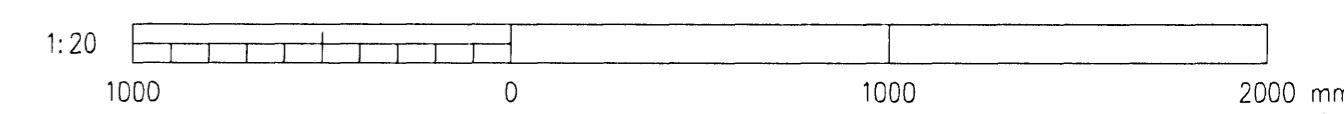
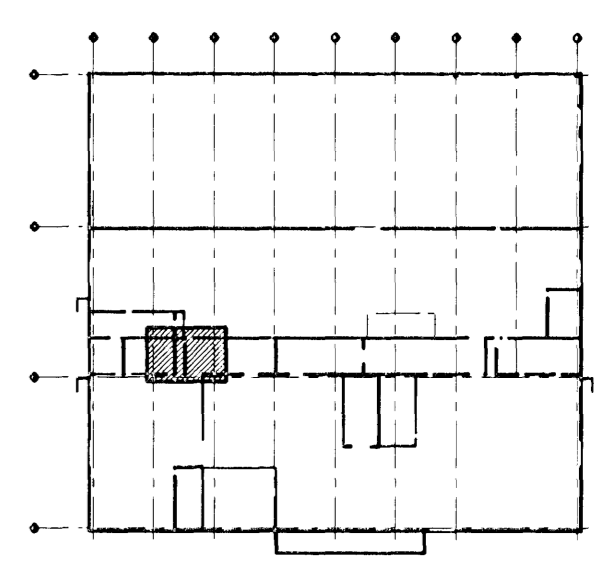
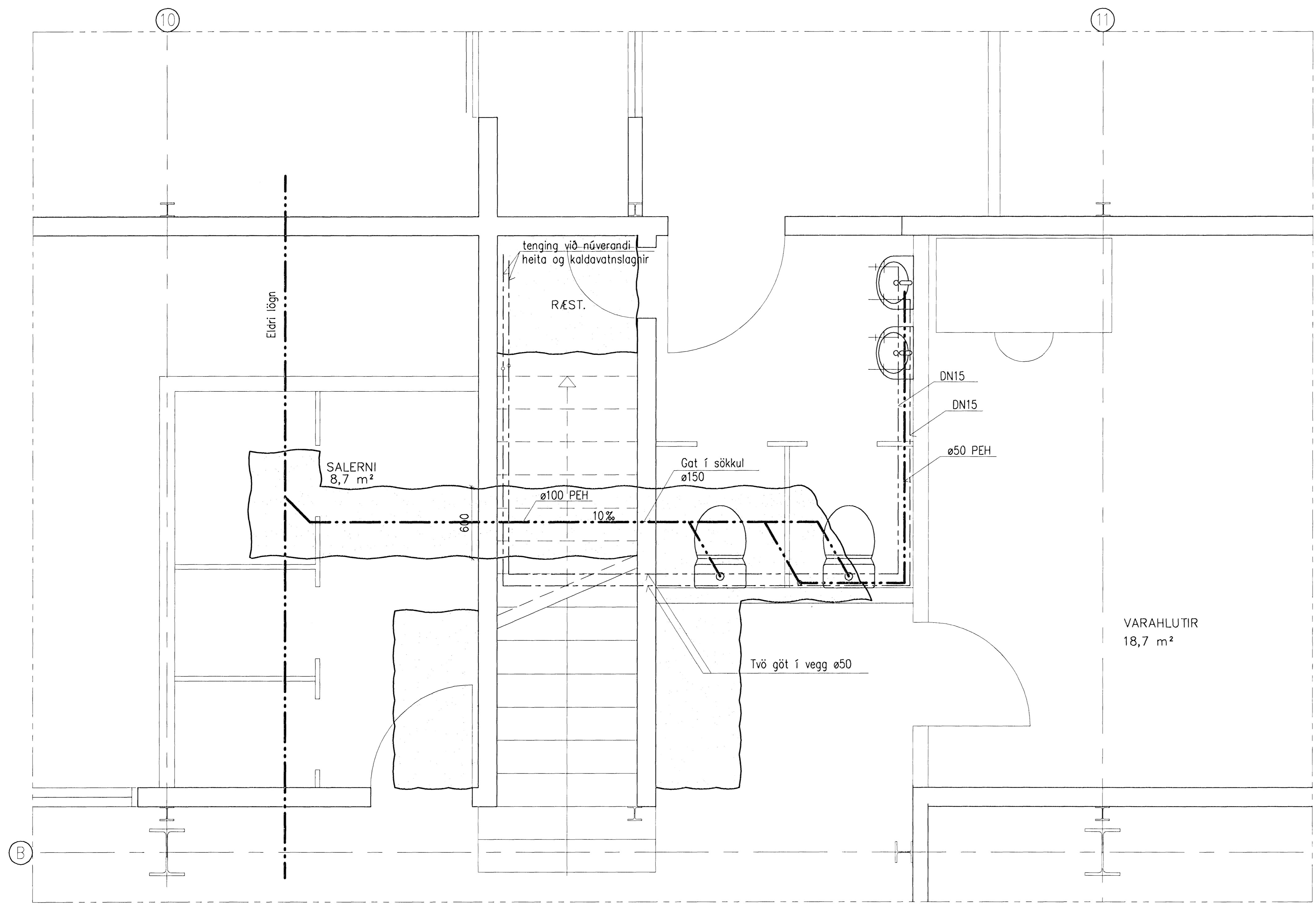


Samþykkt þann
 25 APR. 2008
 Byggingarfulltrúinn í Hafnarfirði
 F.h. Hrölfur S. Gunnlaugsson



K:\2006.01\10\24\Teikn\ögn\150169.dwg

Skýringar:
 Explanations:

1	ISSUED FOR CONSTRUCTION	2008.02.13	NI		
Breyt. / Rev.	Breyting / Revision	Dagur / Date	Samb. / Approved	Notk. heimil / Released	
Tilteikningar nr. ISAL / Ref. drawing no. of ISAL		Samsetningartekningar nr. ISAL / Assembly drawing no. of ISAL			

VST Verkfræðistofa
 Sigurður Thoróddsson hf.
 Austur-Lindaból 100 105 Reykjavík

This drawing is the property of the Alcan Iceland Ltd. and handed out for personal use only. It may neither be copied nor made available to others without permission of the Alcan Iceland Ltd. The receiver is liable for any misuse.

Fjöldi stykja / Number of pieces	Hlutur / Object	Atriði / Item	Efni / Material	æð. stk. / Weight (kg)	Ítalgi / Total	Heild / Overall	Athugasemdir / Remarks
IV	ADALVERKSTÆÐI						
	LAGNIR						
	GRUNNMYND-1.HÆÐ						
Verktali / Supplier	VST hf.	F.h. VST hf. Nóbis Lindabólun 1811443749					
Teknað / Drawn	IN/SHF	FEB. 2008	Yfirforð / Checked	NI			
ALCAN PRIMARY METAL EUROPE		Straumsvík		IS-222 Hafnarfordur		ALCAN	
Teknað / Drawn		150169					