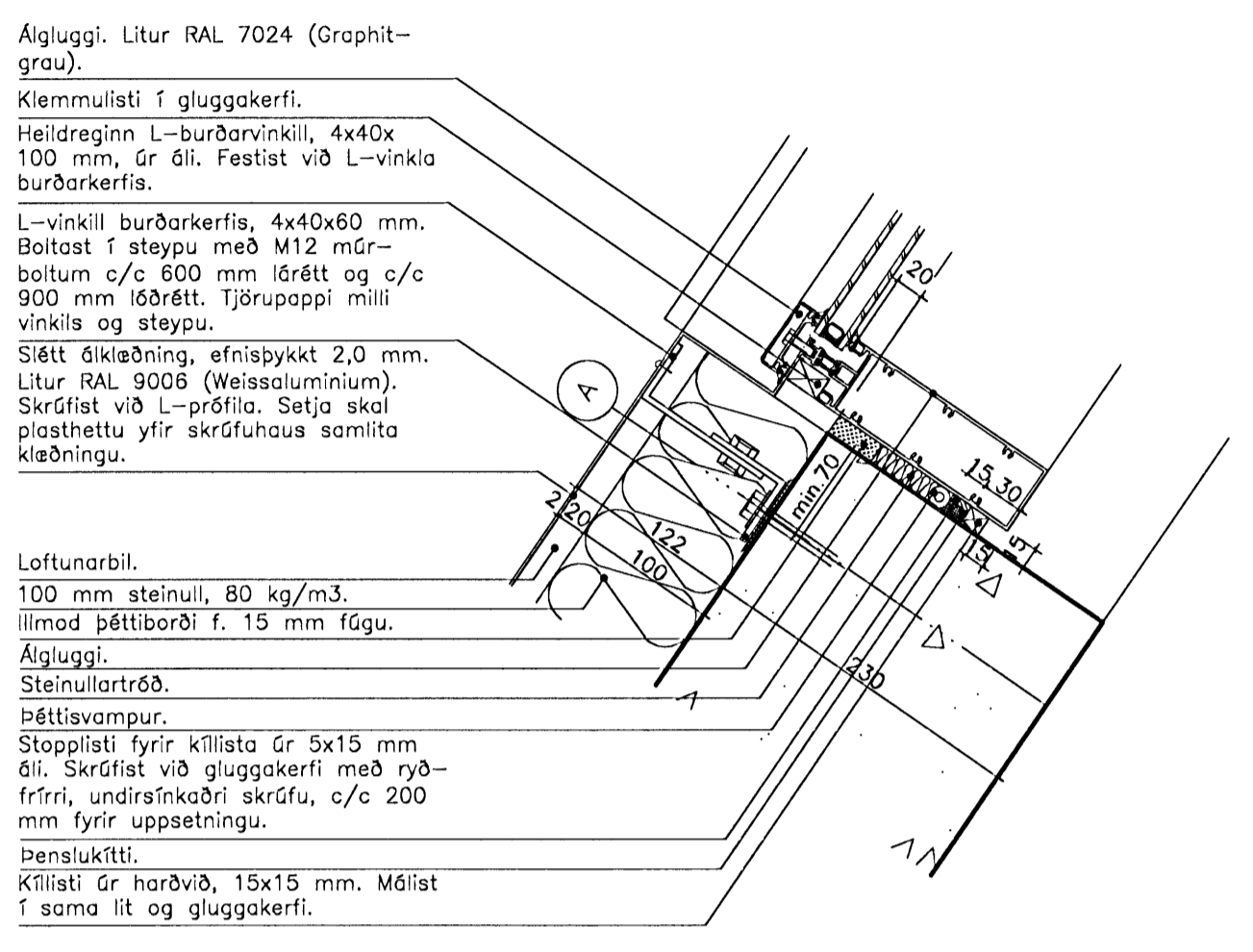


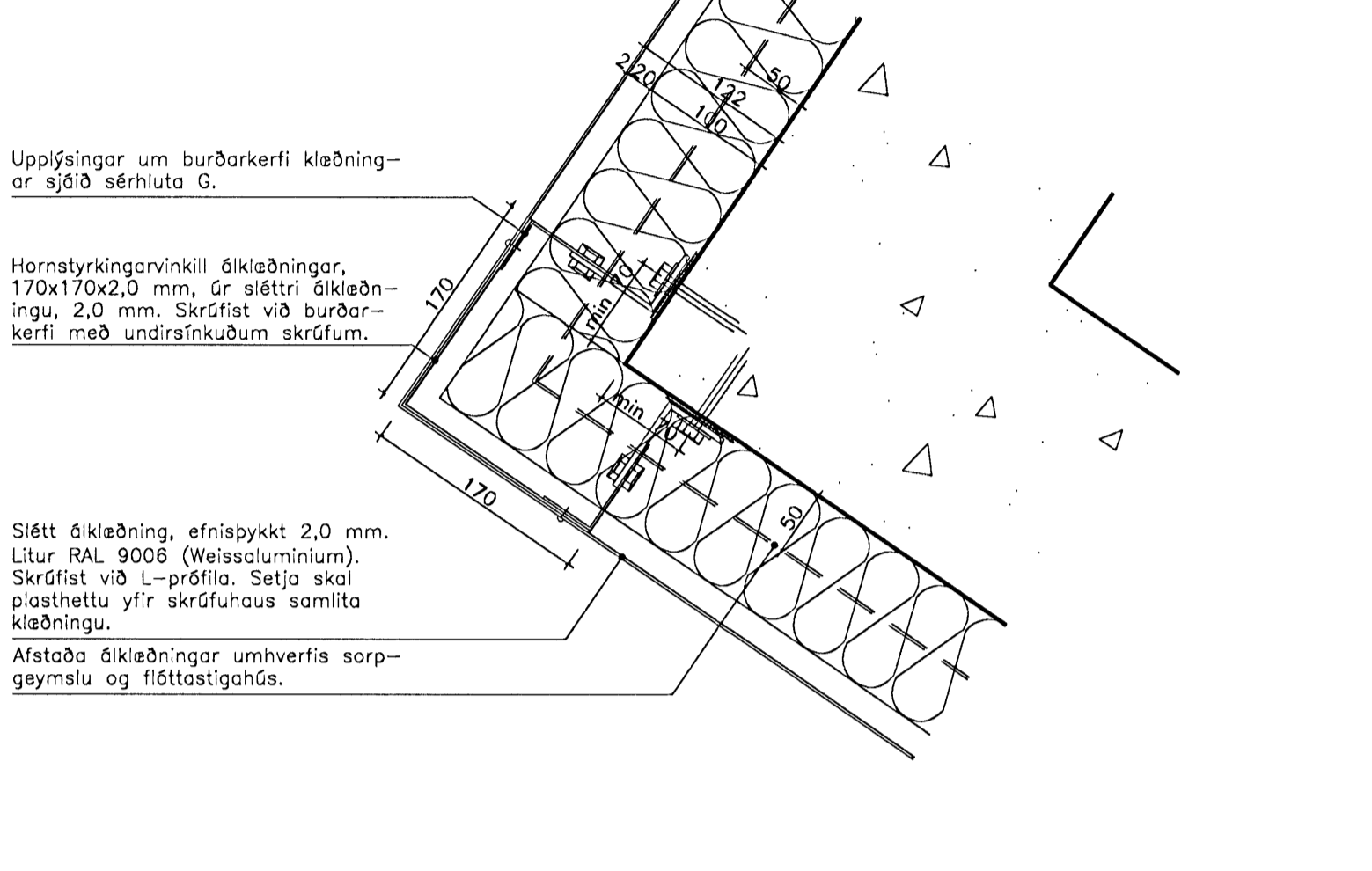
G Hlæðslugler
208 Láréttur sérhluti

Sérhluti G úr Dalshrauni 1 ógildur þar sem hann á ekki við í Dalshrauni 3.

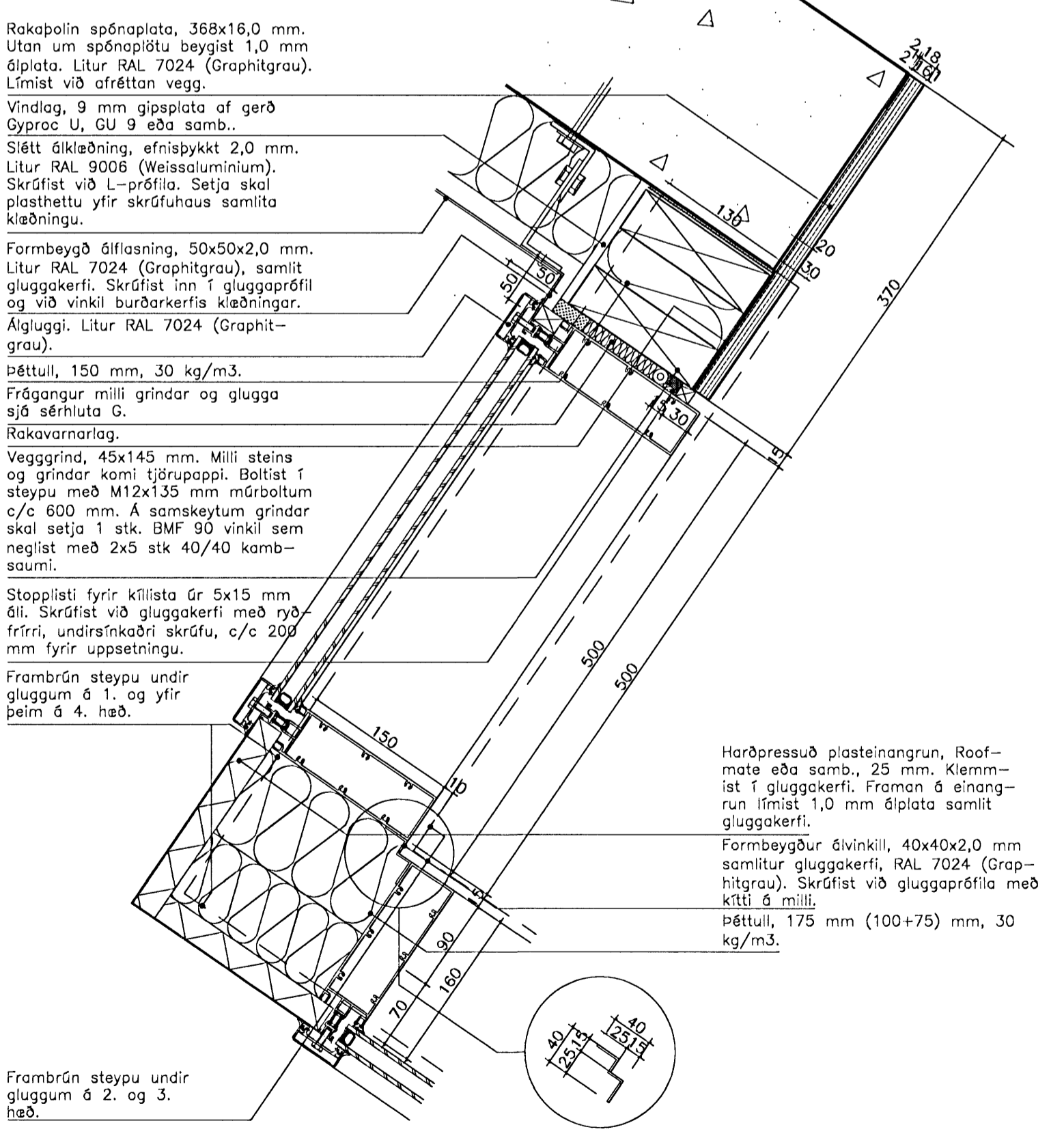
H Álklæðning-gluggi
208 Láréttur sérhluti



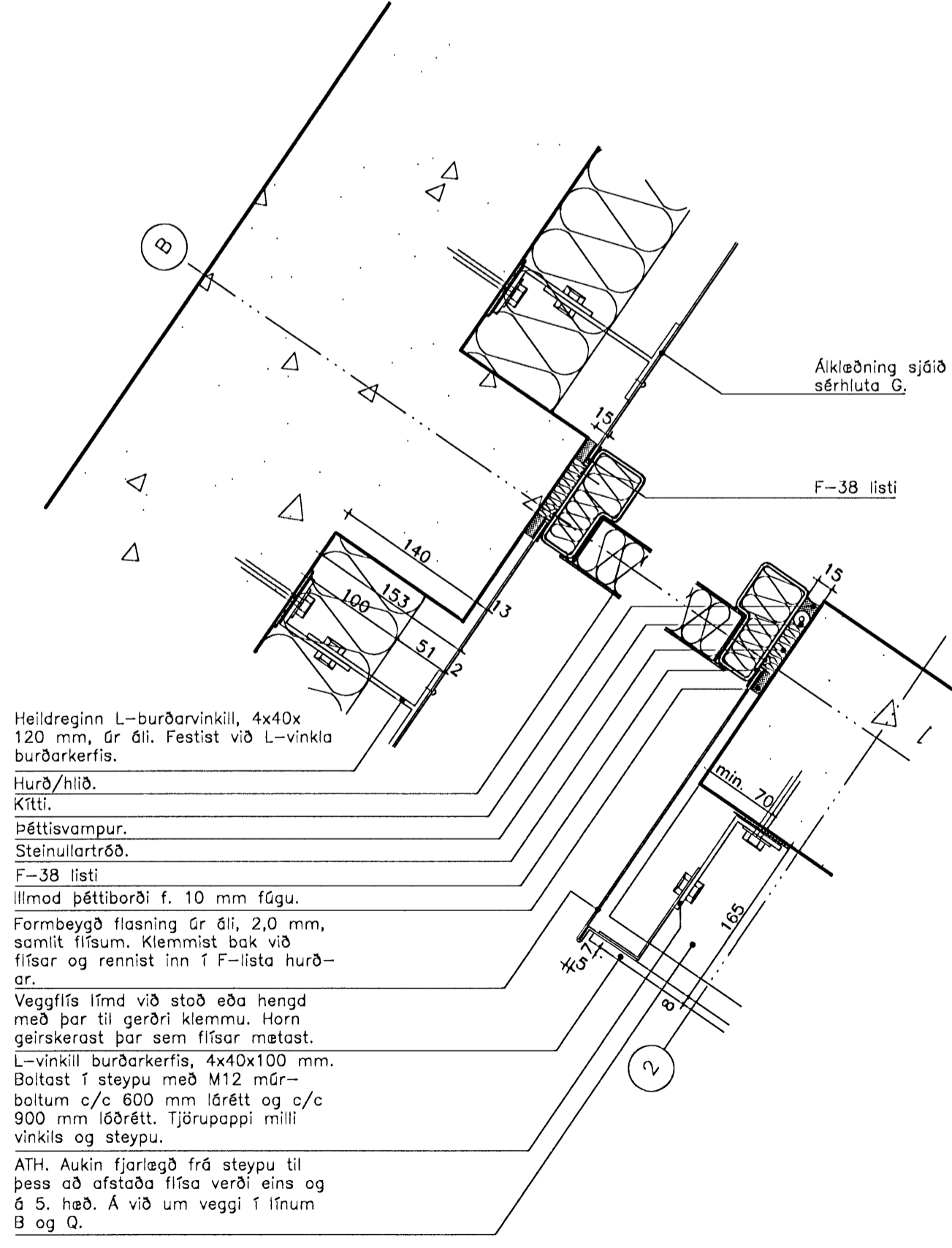
I Álklæðning, horn
208 Láréttur sérhluti



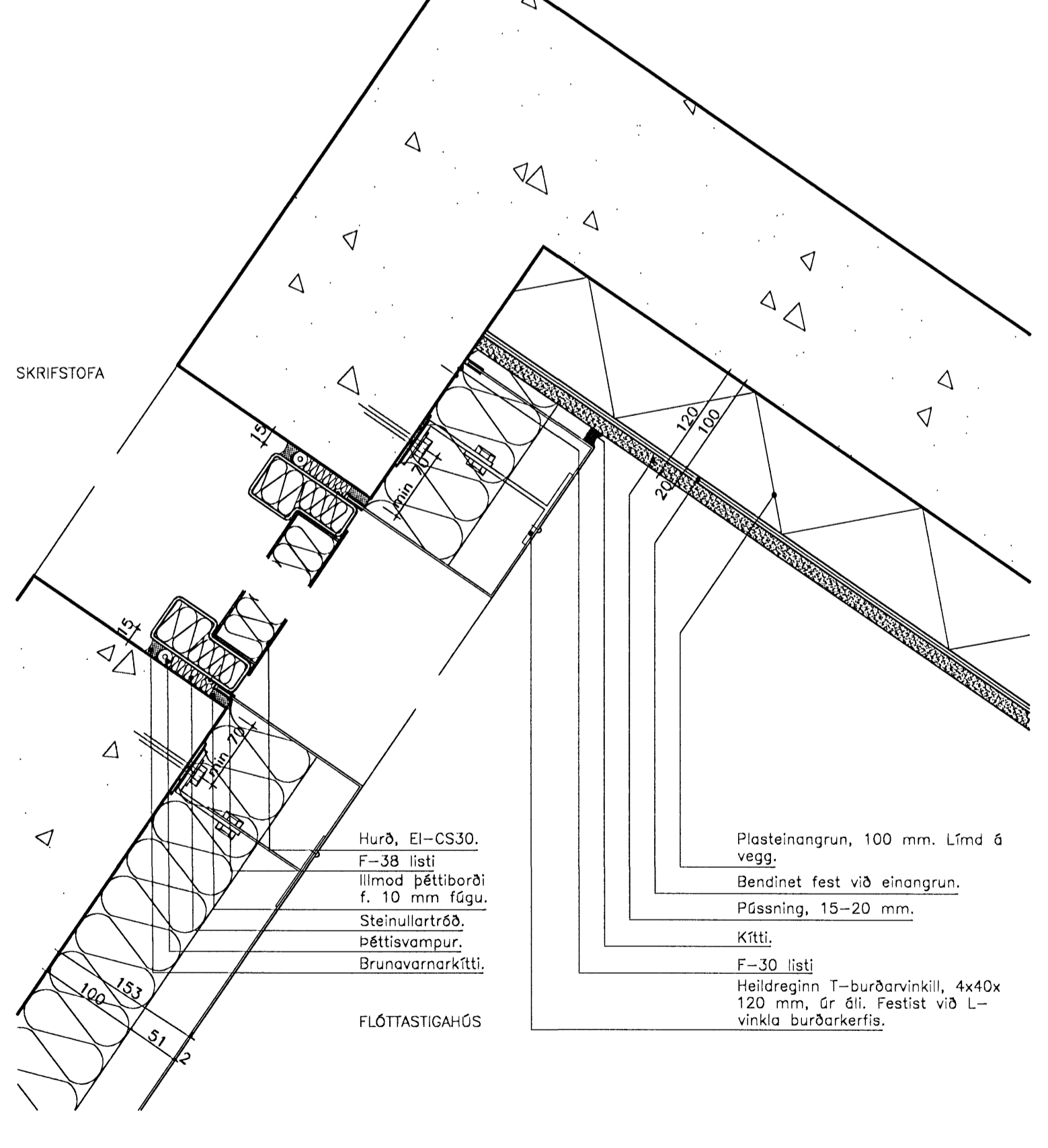
J Álklæðning, gafflgluggi
208 Láréttur sérhluti



K Ál- mætir flísa-álklæðningu
208 Láréttur sérhluti

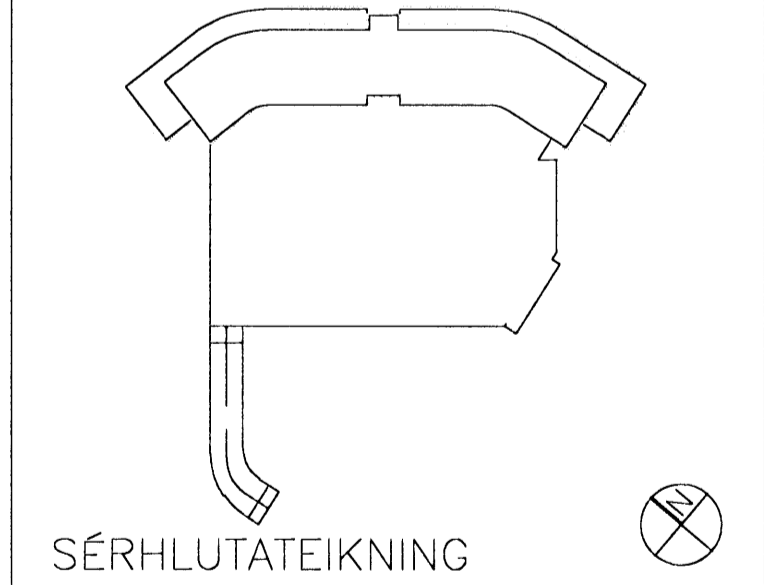


L Álklæðning-flóttahurð
208 Láréttur sérhluti



- SKÝRINGAR:
- HK = Hrökóti
FK = Frágenginn kóti
NB = Kóti í neðri brún
EB = Kóti í efri brún
NF = Niðurfall
BSL = Brunaslanga
- Undirliggjandi lína
——— Yfirliggjandi lína
——— Fyrirhugaður léttur veggur
⊗ Gat í plötu

C:
B:
A:
BREYTINGAR: DAGS:



Dalshraun 3, Hafnarfirði
RIS ehf
VERK: DALS 0608
KVARDI: 1:5
DAGS: 16.04.2008
LÁRÉTTIR SÉRHLUTAR
G-L
TEIKN: 09
SKRÁ: 0608-X-sérhlutar.dwg