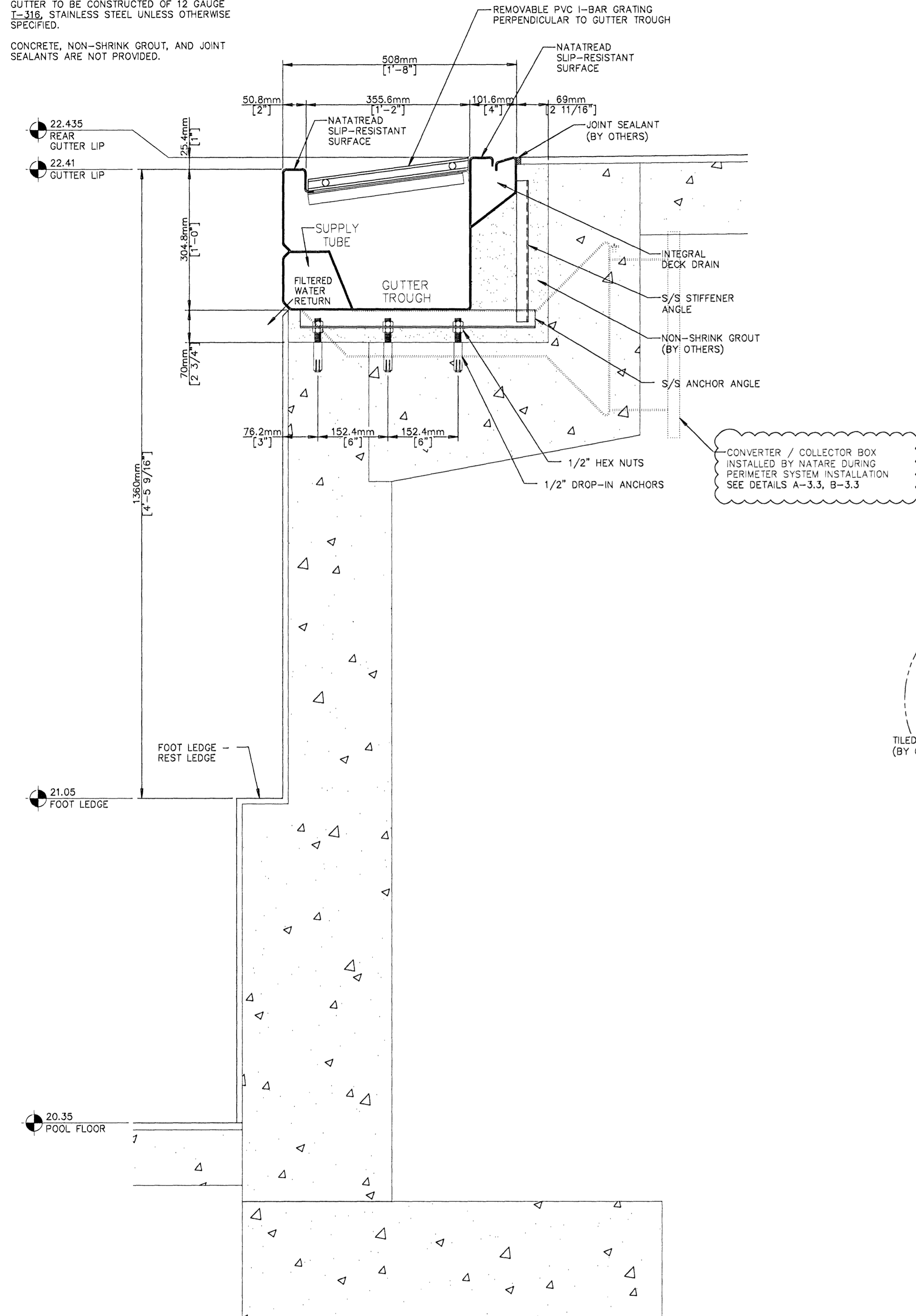
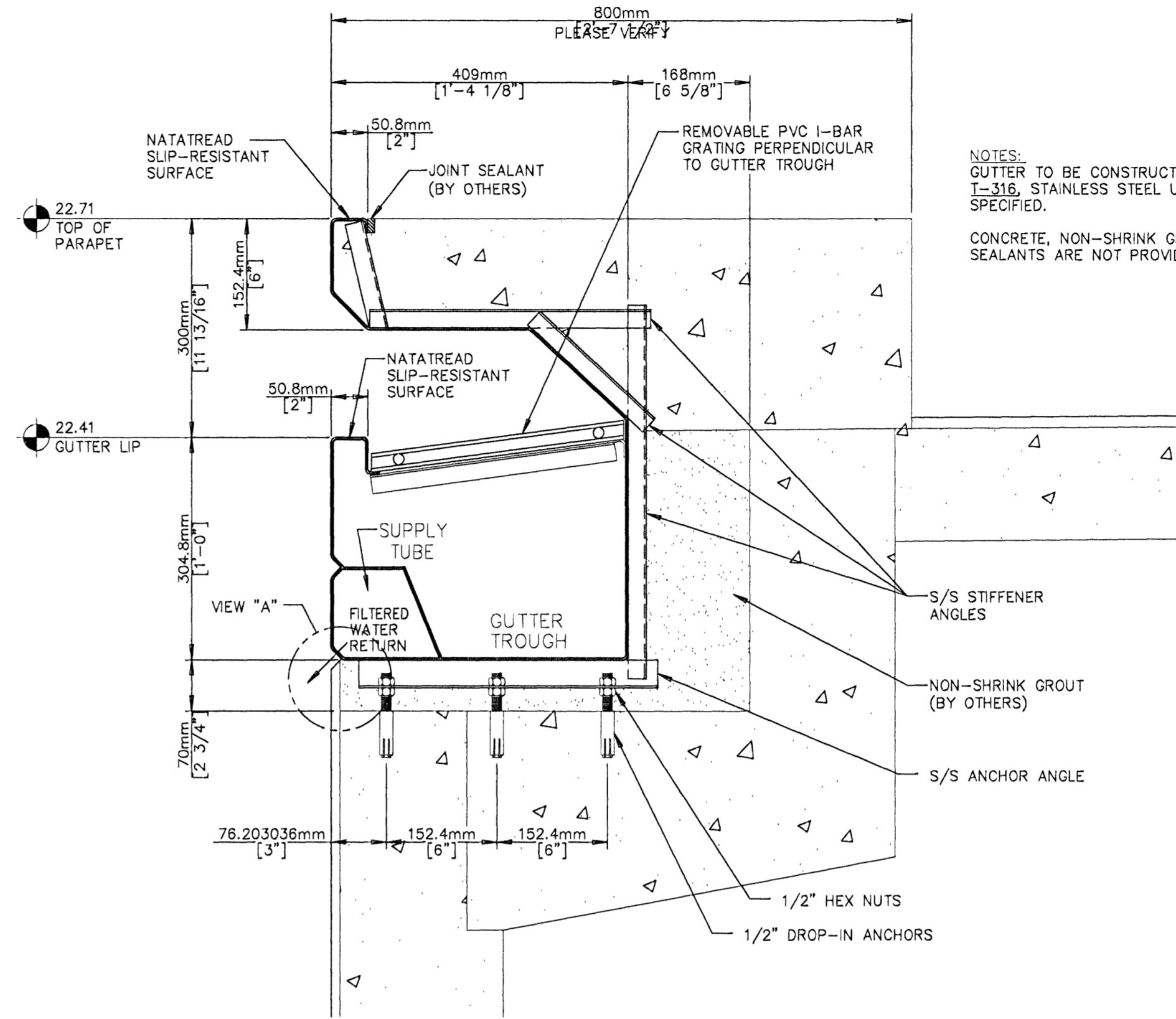
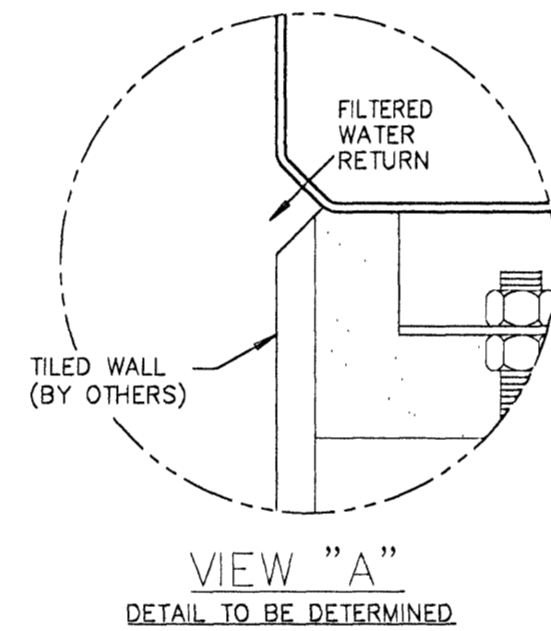


NOTES:  
GUTTER TO BE CONSTRUCTED OF 12 GAUGE  
T-316 STAINLESS STEEL UNLESS OTHERWISE  
SPECIFIED.

CONCRETE, NON-SHRINK GROUT, AND JOINT  
SEALANTS ARE NOT PROVIDED.



**50m COMPETITION  
POOL SECTION**  
A  
3.2  
(3) SIDE WALLS



NOTES:  
GUTTER TO BE CONSTRUCTED OF 12 GAUGE  
T-316 STAINLESS STEEL UNLESS OTHERWISE  
SPECIFIED.

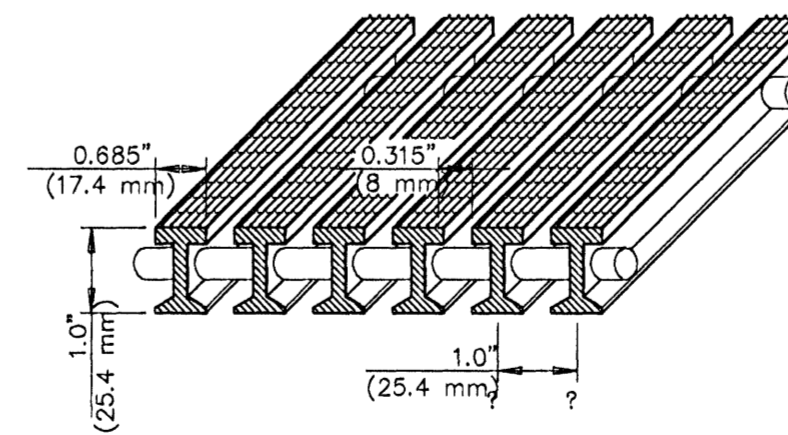
CONCRETE, NON-SHRINK GROUT, AND JOINT  
SEALANTS ARE NOT PROVIDED.

**50m COMPETITION  
POOL SECTION**  
B  
3.2  
(1) END WALL

SERIES	BEARING BAR THICKNESS	NO. BARS PER SECTION	OPEN SPACE	% OPEN AREA	WEIGHT
36850	1.0" (25.4 mm)	2 to 72	0.315" (8 mm)	31.5%	2.96 paf

**NOTES:**

- Natatec grating is manufactured from specially selected, impact resistant, rigid PVC profiles. This grating offers improved toughness and rigidity, dimensional stability and durability. Intended for exterior use, this grating has excellent weatherability and color retention. It is flame retardant and chemically resistant. Typical values are available on request.
- Top surface of grating is serrated to form a uniform slip-resistant surface. Standard color is white.
- Natatec grating is intended for use in a swimming pool, aquatic or water feature environment with uniformly supported spans not exceeding 2ft. (600 mm) and uniformly distributed live loads less than (0.25 Kg/sq. cm.) For applications involving greater spans or loading conditions, contact our engineering department.



**PVC I-BAR GRATING**  
C  
3.2  
COLOR: WHITE

- Do not scale drawings. Refer to or request specific dimensions.
- Specific dimensions are assumed to be accurate. However, do not use for construction unless verified and certified.
- Dimensions and details are subject to change without notice unless drawings are certified.
- For clarity or reference, certain equipment or areas of construction may be shown. Do not assume all items or work illustrated on these drawings to be furnished by Natatec Corporation. Refer to equipment schedule or scope of work for specific details.
- When related work or equipment is shown, such illustration is for information or clarity only. Always refer to appropriate documents for specific details or instructions.

Sundmidstod

Iceland

Samþykkt þann  
07 MAI 2008  
Byggingarfulltrúmi í Hafnarfirði  
F.h. Hröfur S. Gunnlaugsson

Kt. 110457-2789

Strendingur ehf.  
Fjarlægð 13-16\*226 Hafnarfirður  
Sími 565 5640 • strendingur@strendingur.is  
www.strendingur.is

REVISED FOOT LEDGE 8/8/07

NO.	DESCRIPTION	DATE
REVISIONS		

**NATARE CORPORATION**  
5905 W. 74th Street  
Indianapolis, IN 46278-1786  
(317)290-8828  
Fax: (317)290-9998

These drawings and the ideas, concepts, illustrations, and written information represented hereby are the property of Natatec Corporation and shall not be distributed, copied, reproduced, or utilized in any manner except upon the expressed written consent of Natatec Corporation. The recipient hereby acknowledges the confidential and proprietary nature of these drawings and acknowledges Natatec's proprietary interest therein and agrees not to use these drawings or the ideas and concepts depicted herein except for the fabrication of the articles depicted herein for and on the behalf of Natatec Corporation.

© 2007 NATATEC CORPORATION

PAGE TITLE:  
**50m COMPETITION  
POOL DETAILS**

DATE: 10/5/07

FILE: 50m Competition Pool.dwg

LAYOUT: 50m Competition Pool Details

DRAWN BY: SAL

CHECKED BY: MTW

PROJECT NO.: SHEET NO.:

3.2