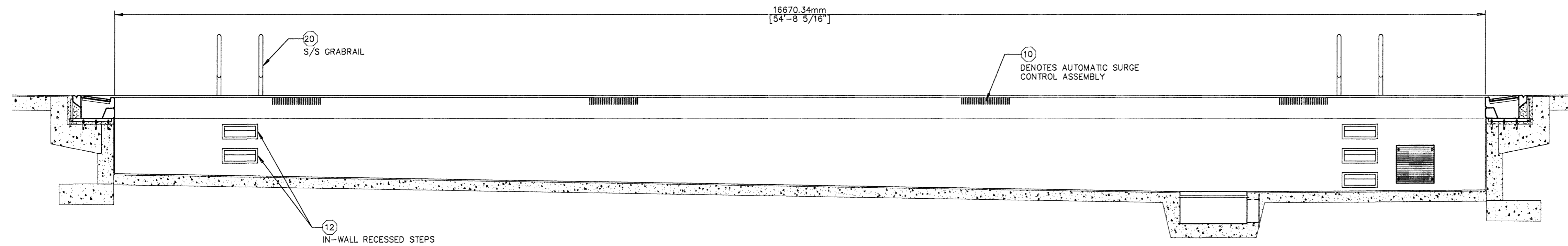


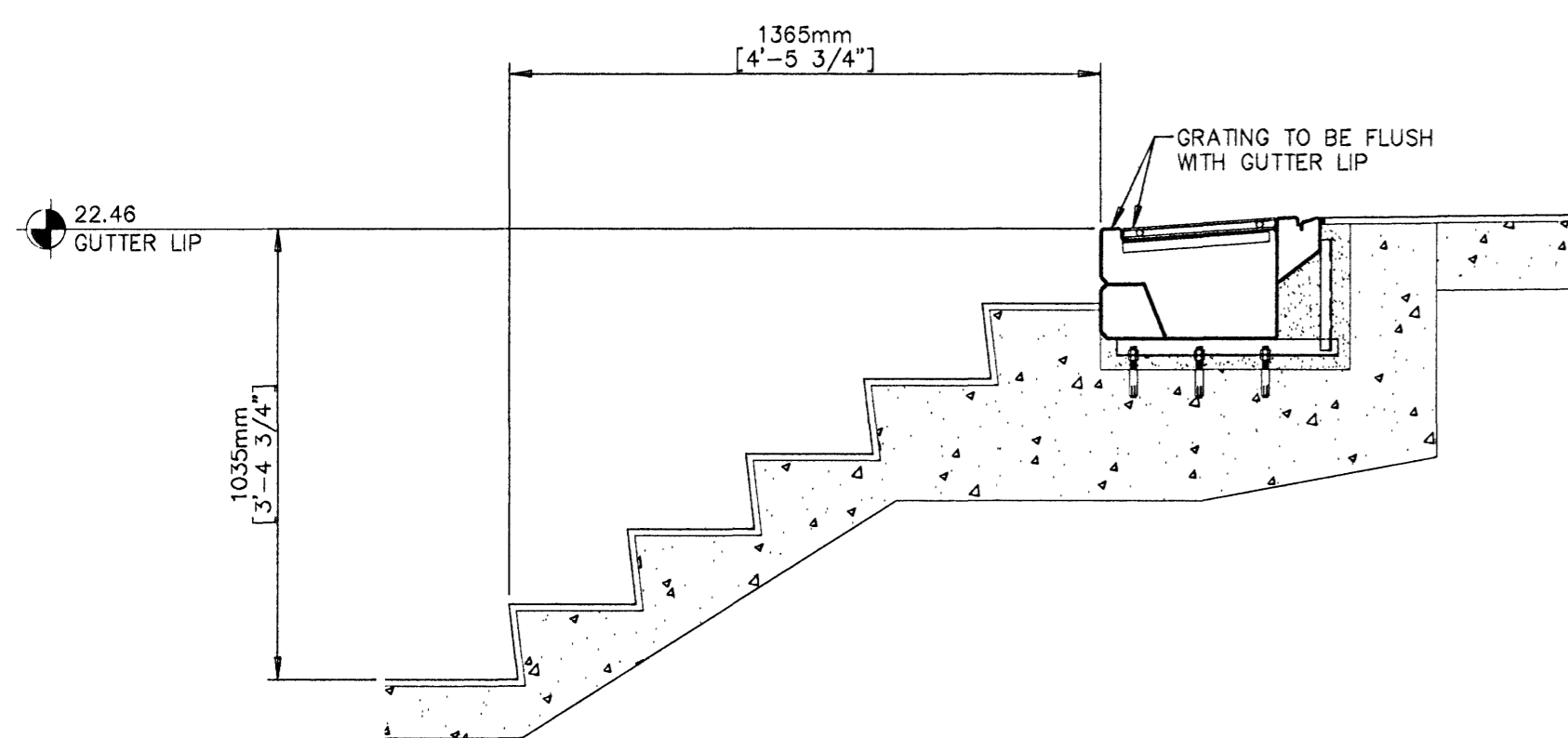
A
4.1
TRAINING
POOL SECTION



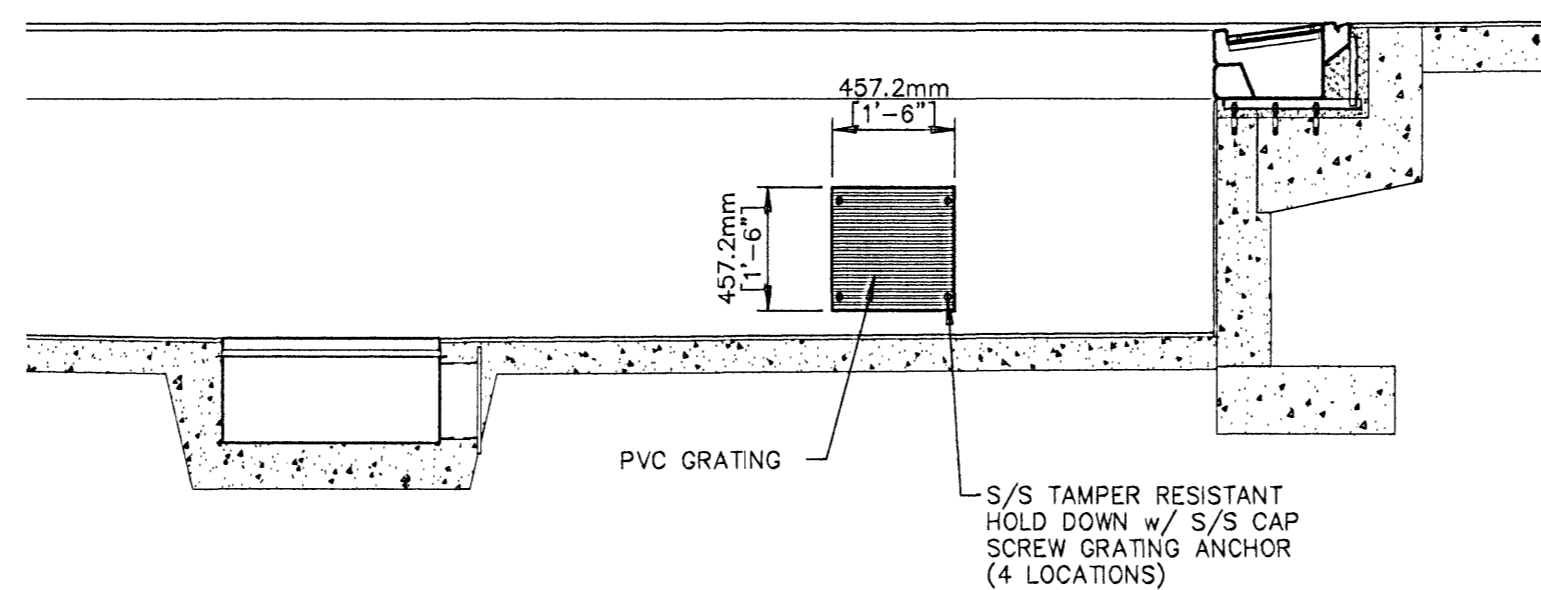
B
4.1
TRAINING
POOL SECTION

TRAINING POOL EQUIPMENT SCHEDULE				
MARK	QTY.	MANUFACTURER	DESCRIPTION	DETAIL
1	56.04m [183'-10 5/16"]	Natare	MS-1000 Stainless Steel Perimeter Gutter System	A-4.2
2	56.04m [183'-10 5/16"]	Natare	I-Bar Perimeter Gutter Grating	B-4.2
3	1	Natare	Supply Converter, 250mm	C-4.2
4	2	Natare	Gutter Collector, 250mm	D-4.2
5	4	Natare	Deck Drain Clean Out	C,D-4.3
6	4	Natare	Deck Drain Out Fall	A-4.3
7	4	Natare	Main Drain, 250mm	B-4.3
8	8	Natare	Recessed Rope Hook	E-4.3
9	1	Natare	Wall Mount Return Box	E-4.1
10	8	Natare	Automatic Surge Control	C-4.4
11	1	Natare	Automatic Water Level Controller	Sheet 8.4
12	5	Natare	S/S Recessed Step	A-4.4

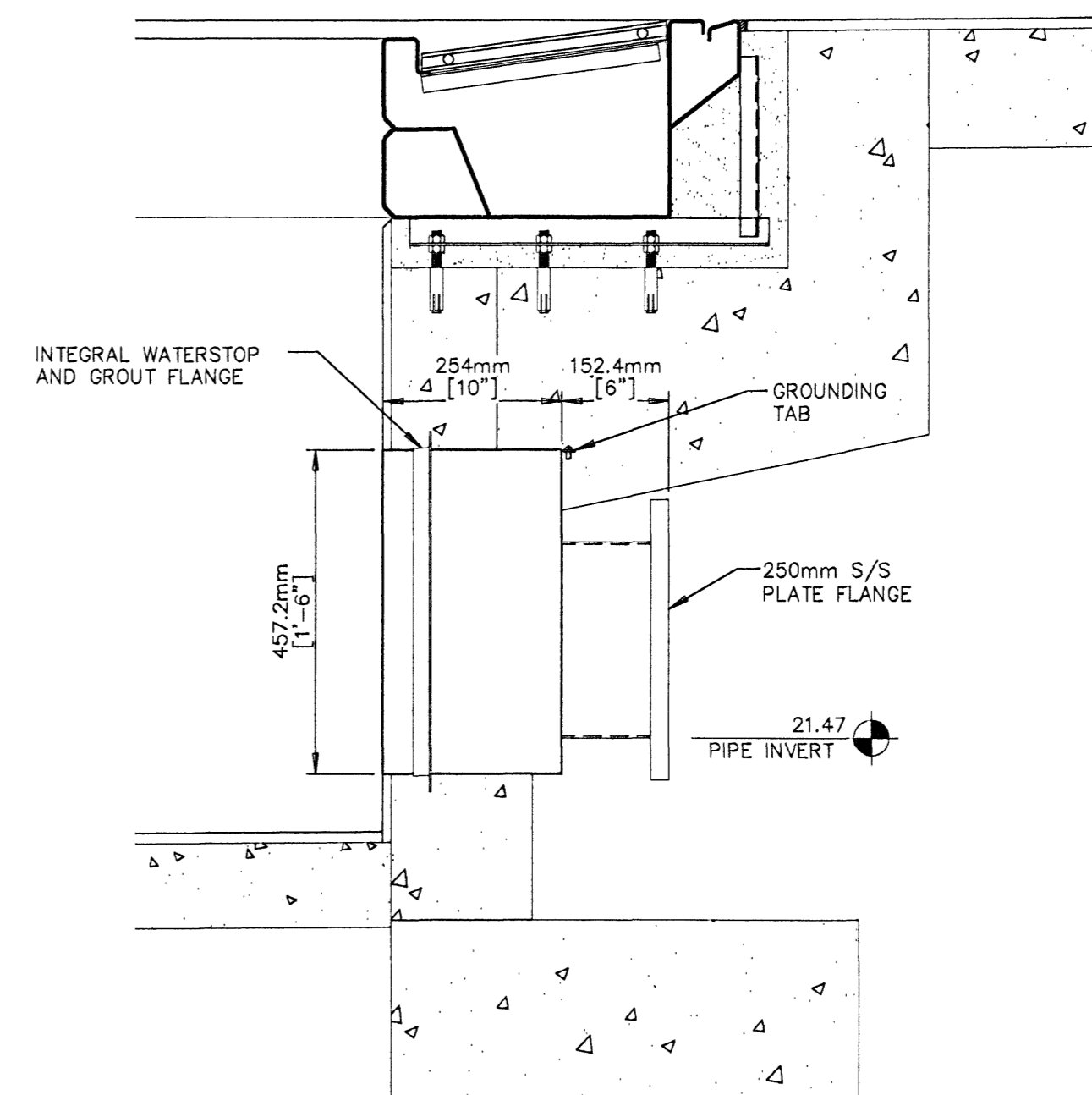
NOTE:
RETURN BOXES TO BE CONSTRUCTED OF 12 GAUGE I304 STAINLESS STEEL MATERIAL UNLESS OTHERWISE SPECIFIED.



C
4.1
STEP SECTION



D
4.1
WALL MOUNT
RETURN BOX
QTY.: 1 REQ'D.



E
4.1
WALL MOUNT
RETURN BOX
QTY.: 1 REQ'D.

- Do not scale drawings. Refer to or request specific dimensions.
- Specific dimensions are assumed to be accurate. However, do not use for construction unless verified and certified.
- Dimensions and details are subject to change without notice unless drawings are certified.
- For clarity or reference, certain equipment or areas of construction may be shown. Do not assume all items or work illustrated on these drawings to be furnished by Nature Corporation. Refer to equipment schedule or scope of work for specific details.
- When related work or equipment is shown, such illustration is for information or clarity only. Always refer to appropriate documents for specific details or instructions.

Sundmidstod

Iceland

Sampykkt þann
07 MAI 2008
Byggingarfulltrúnn í Hafnarfirði
F.h. Hrólfur S. Gunnlaugsson

[Signature]
Kt. 110457-2789

Strendingur ehf.
virkisgjafi
Hafnarvegur 15-19 • 200 Hafnarfirður
Sími 595 5640 • strendingur@strendingur.is
www.strendingur.is

NO.	DESCRIPTION	DATE
REVISIONS		



5905 W. 74th Street
Indianapolis, IN 46278-1788
(317)290-8828
Fax: (317)290-9998

These drawings and the ideas, concepts, illustrations, and written information represented hereby are the property of Nature Corporation and shall not be distributed, copied, reproduced, or utilized in any manner except upon the expressed written consent of Nature Corporation. The recipient hereof acknowledges the confidential and proprietary nature of these drawings and acknowledges Nature's proprietary interest therein and agrees not to use these drawings or the ideas and concepts depicted herein except for the fabrication of the articles depicted herein for and on the behalf of Nature Corporation.

© 2007 NATARE CORPORATION

PAGE TITLE:
TRAINING
POOL SECTIONS

DATE: 10/5/07

FILE: Training Pool.dwg

LAYOUT: Training Pool Section

DRAWN BY: SAL

CHECKED BY: MTW

PROJECT NO.: SHEET NO.:

4.1