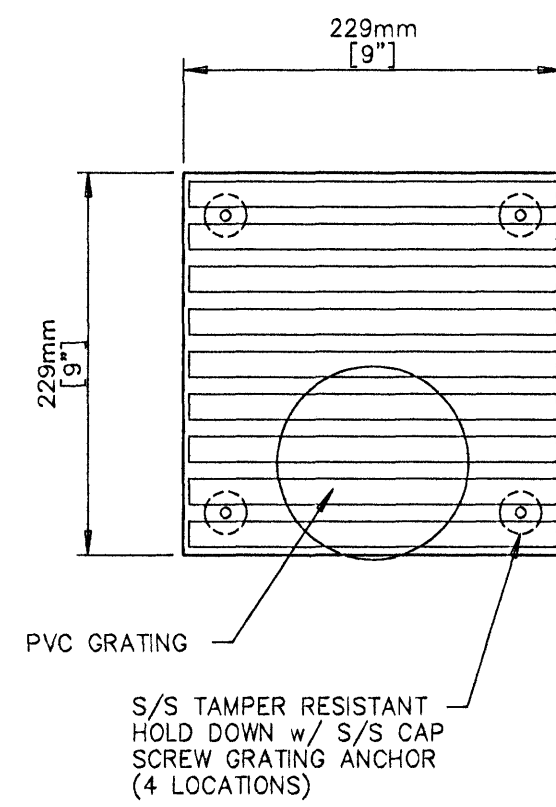


**AUTOMATIC SURGE CONTROL ASSEMBLY**

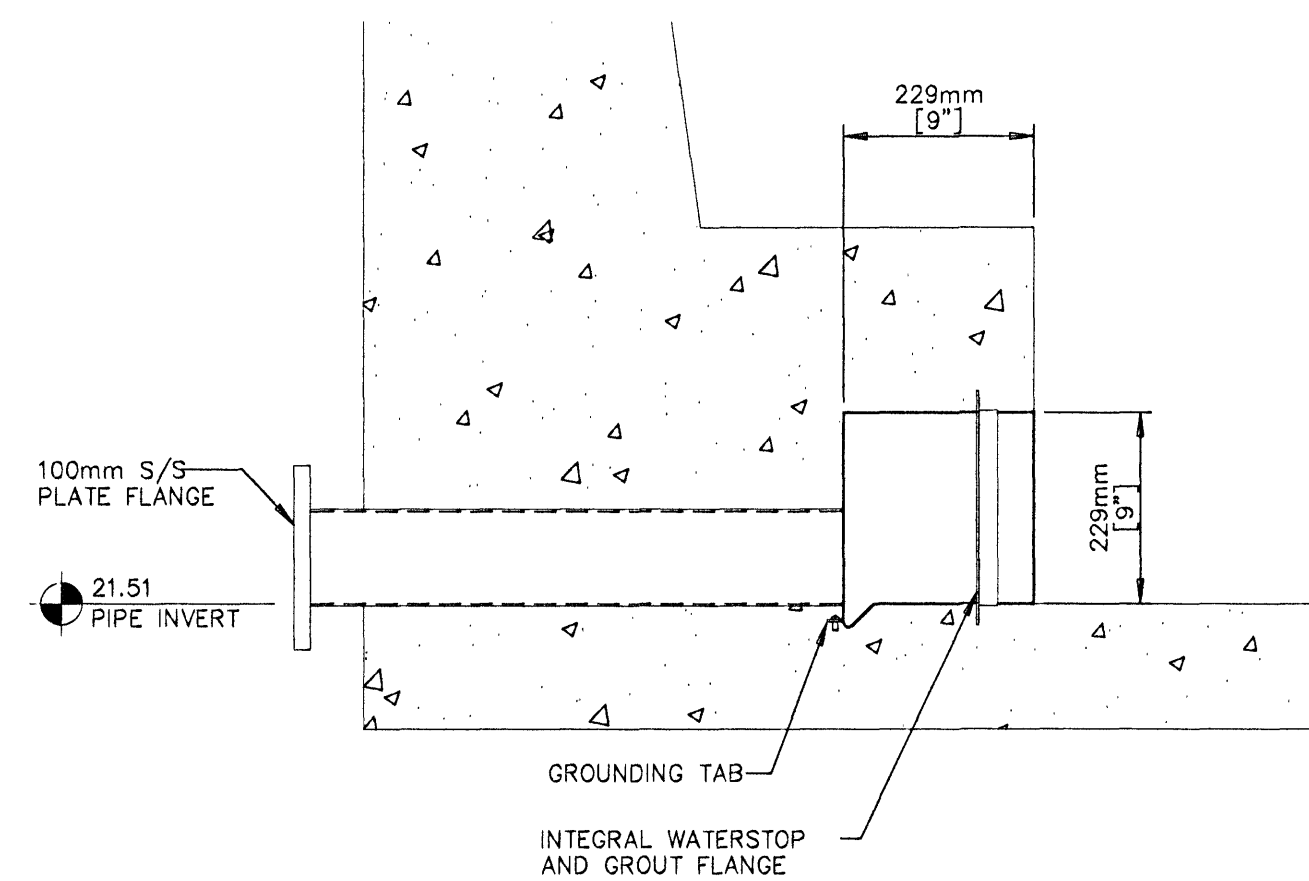
QTY.: 5 REQ'D.  
(1) REQ'D PER HOT POT

NOTE:  
MAIN DRAIN TO BE CONSTRUCTED OF 12 GAUGE I304  
STAINLESS STEEL MATERIAL UNLESS OTHERWISE SPECIFIED.

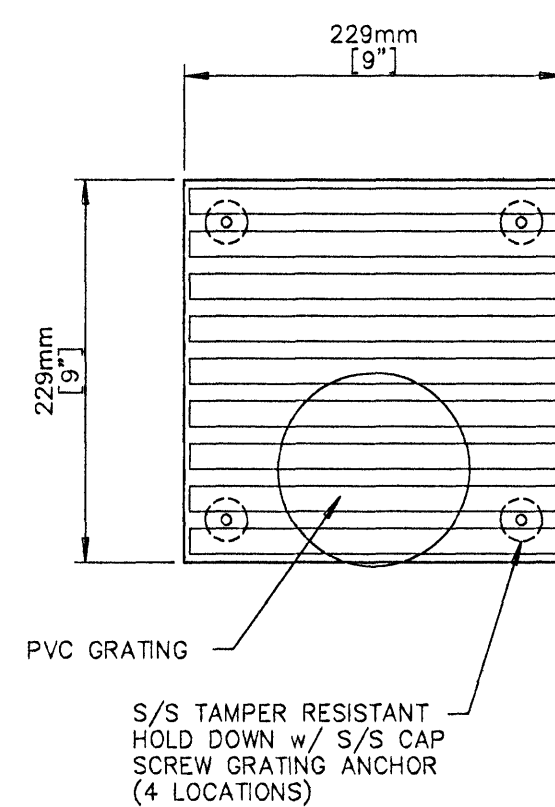


**STAINLESS STEEL MAIN DRAIN HOT POTS (ALL 4)**

QTY.: 2 REQ'D./HOT POT  
8 REQ'D. TOTAL

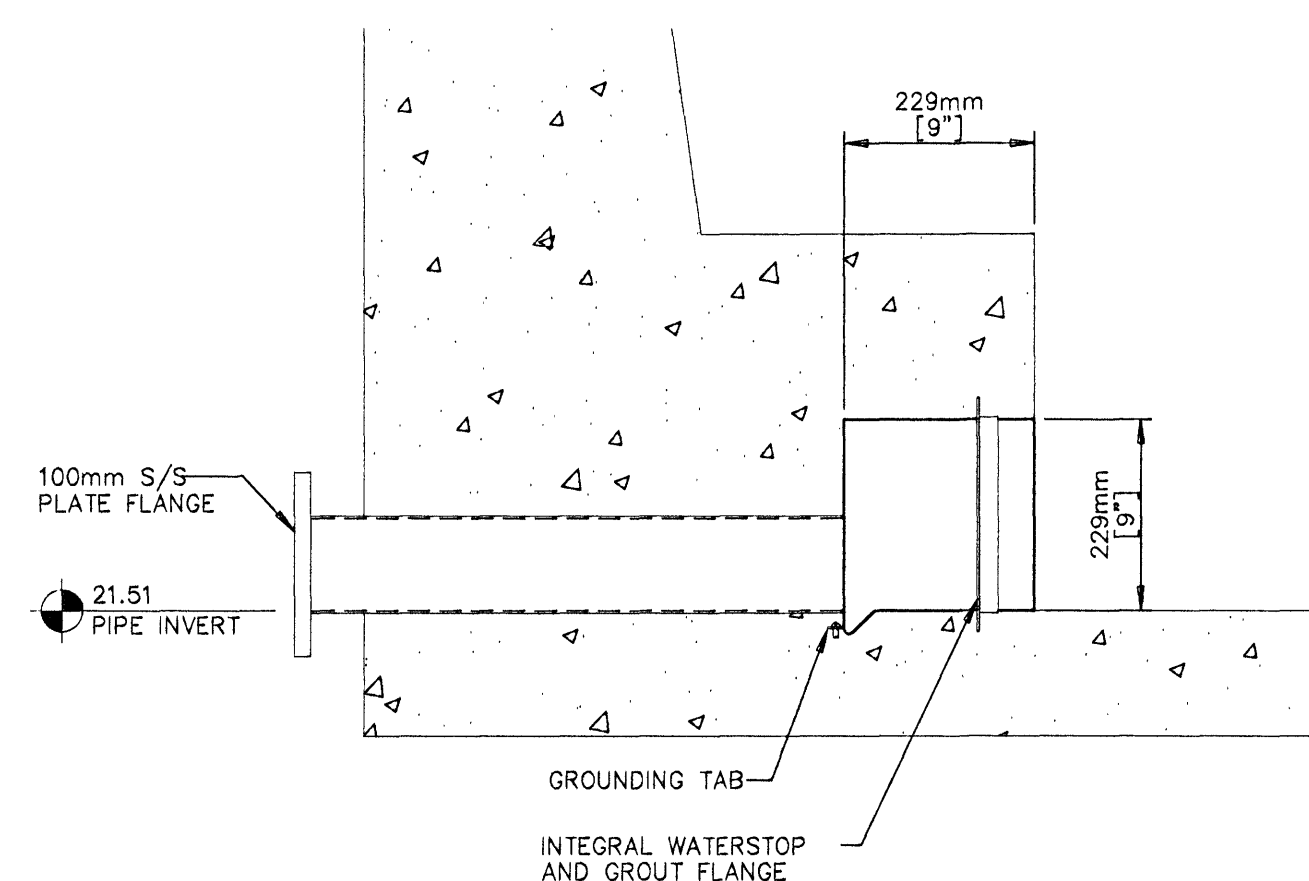


NOTE:  
MAIN DRAIN TO BE CONSTRUCTED OF 12 GAUGE I304  
STAINLESS STEEL MATERIAL UNLESS OTHERWISE SPECIFIED.

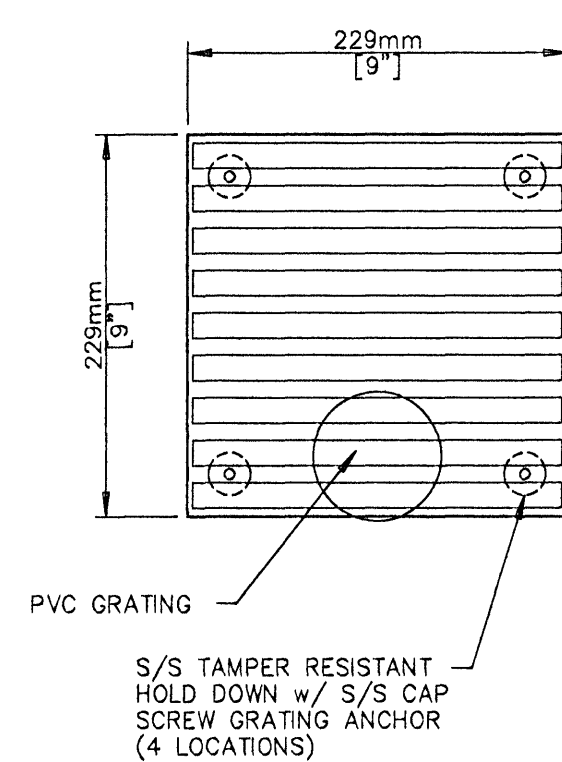


**STAINLESS STEEL MAIN DRAIN WHIRLPOOL**

QTY.: 2 REQ'D.

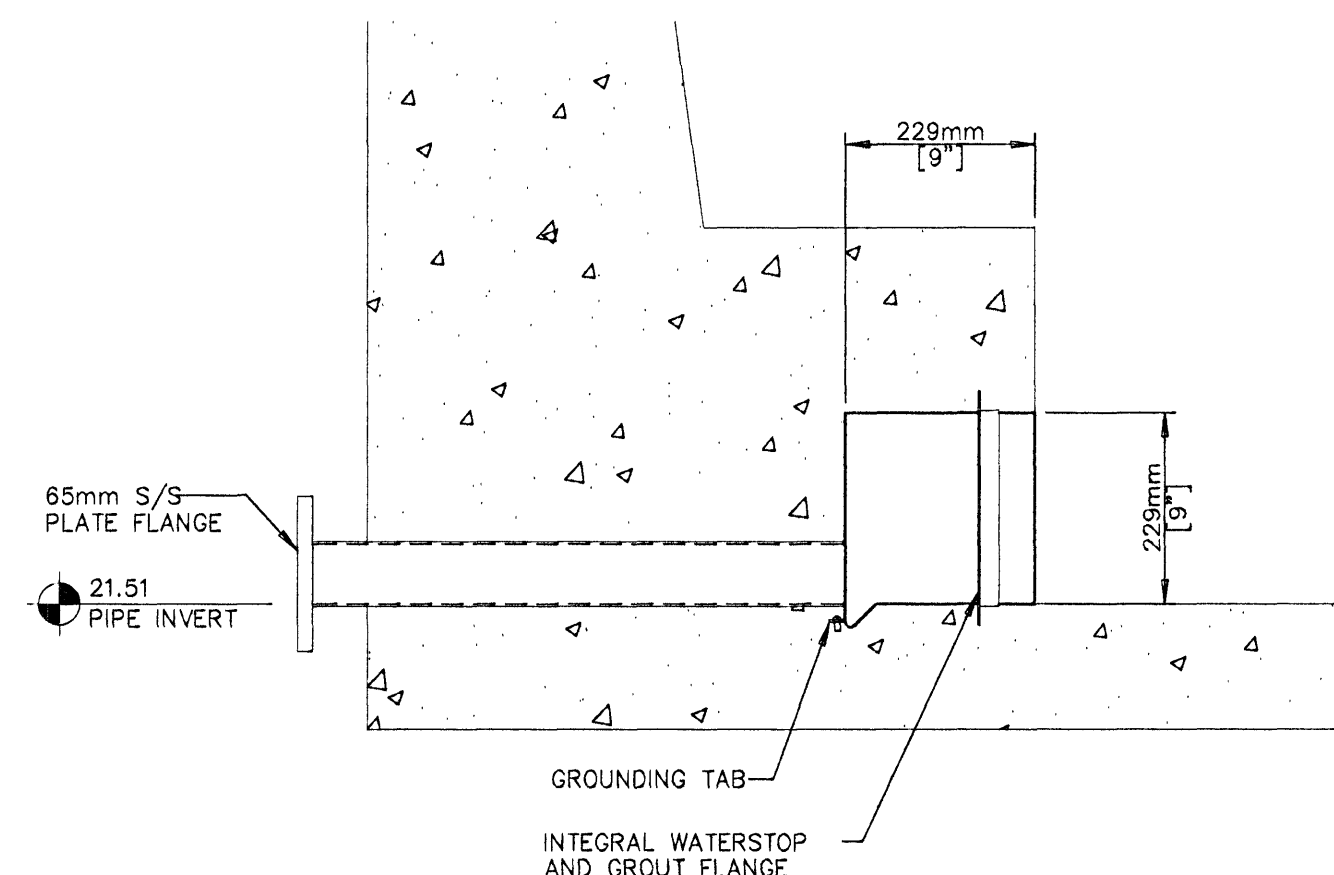


NOTE:  
SUCTION BOX TO BE CONSTRUCTED OF 12 GAUGE I304  
STAINLESS STEEL MATERIAL UNLESS OTHERWISE SPECIFIED.



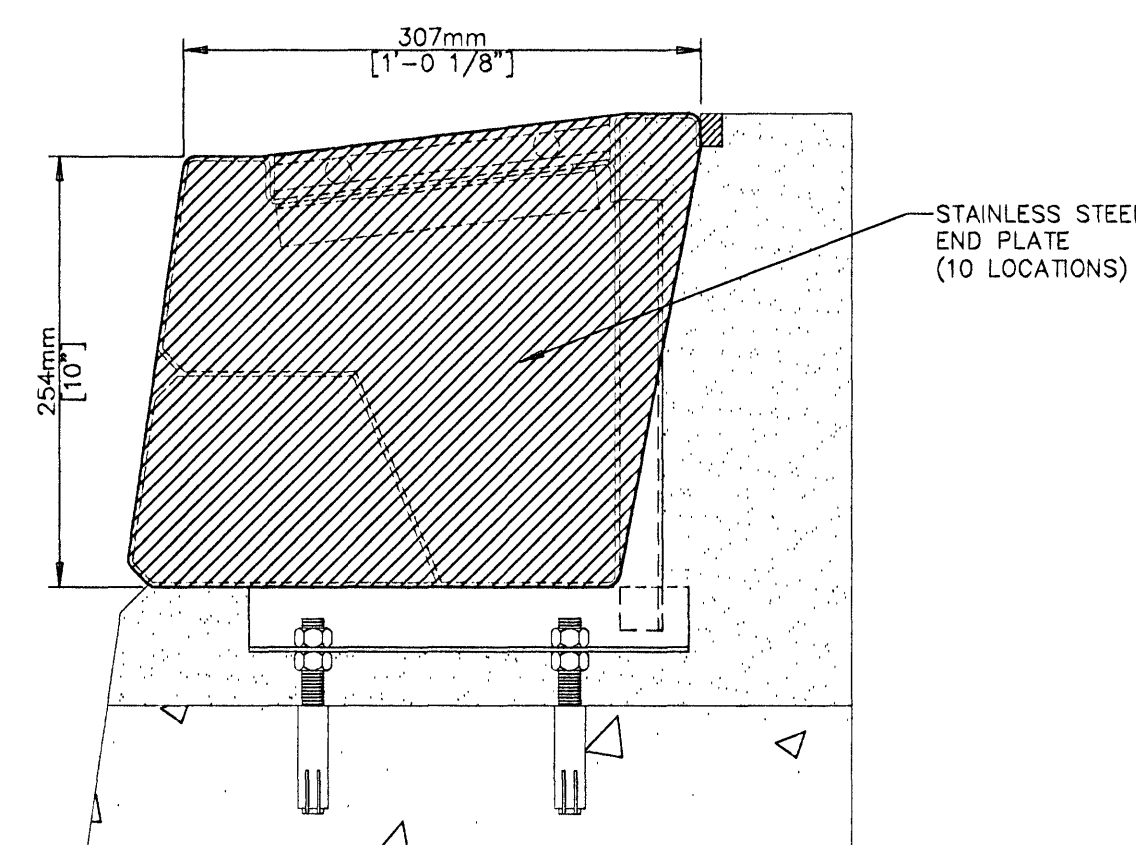
**STAINLESS STEEL HYDROTHERAPY SUCTION BOX**

QTY.: 2 REQ'D.



**TYPICAL STAINLESS STEEL END PLATE**

QTY.: 10 REQ'D.



1. Do not scale drawings. Refer to or request specific dimensions.
2. Specific dimensions are assumed to be accurate. However, do not use for construction unless verified and certified.
3. Dimensions and details are subject to change without notice unless drawings are certified.
4. For clarity or reference, certain equipment or areas of construction may be shown. Do not assume all items or work illustrated on these drawings to be furnished by Nature Corporation. Refer to equipment schedule or scope of work for specific details.
5. When related work or equipment is shown, such illustration is for information or clarity only. Always refer to appropriate documents for specific details or instructions.

Sundmidstod

Iceland

Sampykkt þann  
07 MAI 2008  
Byggingarfulltrúinn í Hafnarfirði,  
F.h. Hrólfur S. Gunnlaugsson

*Sty. Einar*  
Kt. 110457-2789

**Strendingur ehf.**  
Fyrirfangur 13-15 • 200 Hafnarfjarður  
Sími 555 5840 • strendingur@strendingur.is  
www.strendingur.is

NO.	DESCRIPTION	DATE
REVISIONS		



**NATURE CORPORATION**  
5905 W. 74th Street  
Indianapolis, In 46278-1788  
(317)290-8828  
Fax:(317)290-9998

These drawings and the ideas, concepts, illustrations, and written information represented hereby are the property of Nature Corporation and shall not be distributed, copied, reproduced, or utilized in any manner without the expressed written consent of Nature Corporation. The recipient hereby acknowledges the confidential and proprietary nature of these drawings and information and agrees not to use these drawings or the ideas and concepts depicted herein except for the fabrication of the articles depicted herein for and on the behalf of Nature Corporation.

© 2007 NATURE CORPORATION

PAGE TITLE:

**HOT POTS DETAILS**

DATE: 10/5/07

FILE: Hot Pots.dwg

LAYOUT: Hot Pots Details (2)

DRAWN BY: SAL

CHECKED BY: MTW

PROJECT NO.:

SHEET NO.:

6.3